



# Lenovo ThinkPad T490s Battery Replacement

Use this guide to replace the battery in your...

Written By: Alex Diaz-Kokaisl



# INTRODUCTION

Use this guide to replace the battery in your Lenovo ThinkPad T490s Laptop.

**For your safety, discharge the battery below 25% before disassembling your device.** This reduces the risk of fire if the battery is accidentally damaged during the repair. If your battery is swollen, [take appropriate precautions](#).

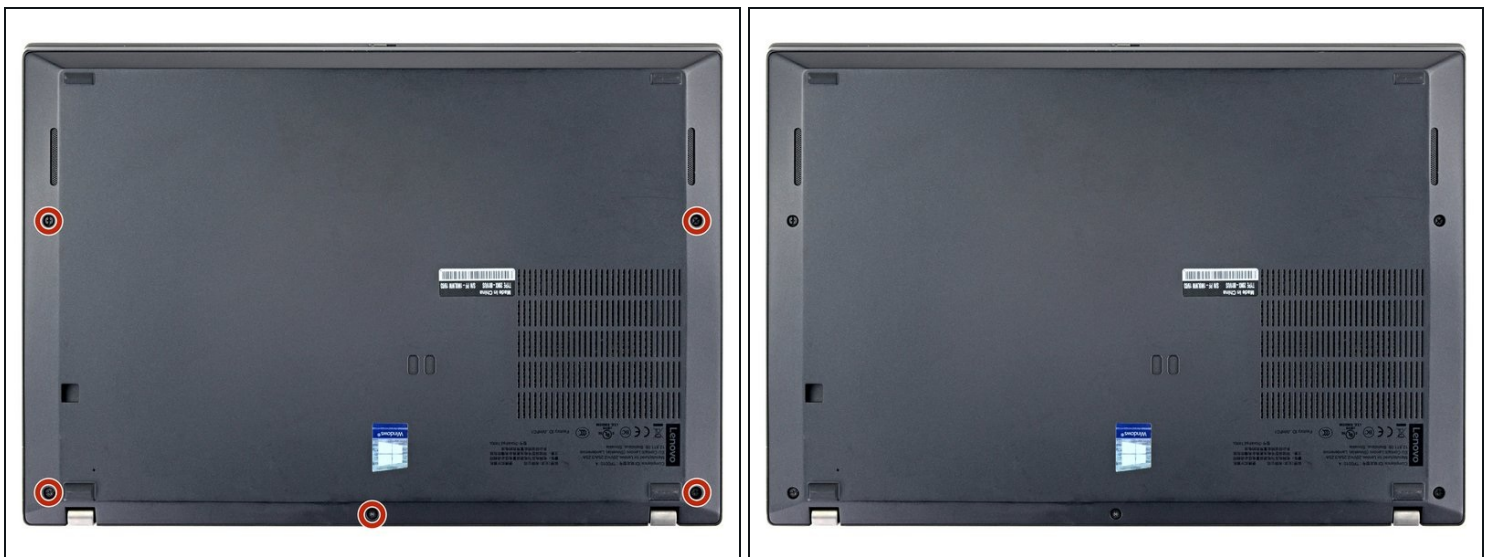
## TOOLS:

[iFixit Opening Picks \(Set of 6\)](#) (1)  
[Phillips #1 Screwdriver](#) (1)  
[Phillips #0 Screwdriver](#) (1)


## PARTS:

[Lenovo ThinkPad T14s / T490s / T495s Battery](#) (1)

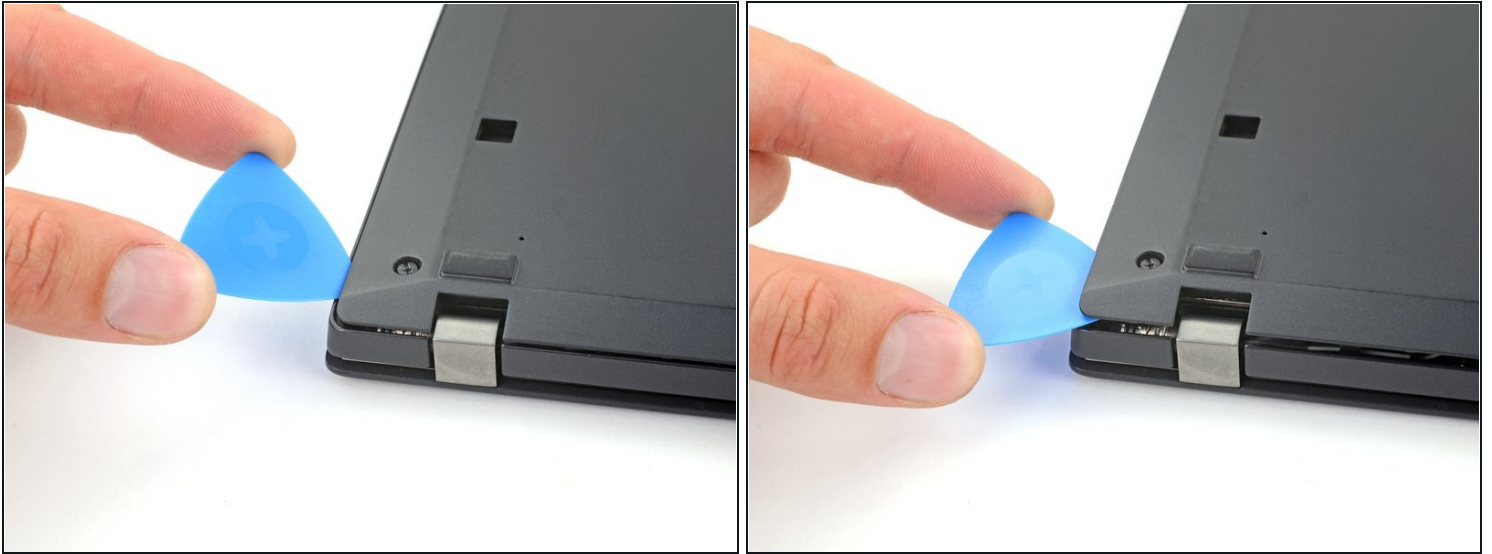
## Step 1 — Loosen the back screws



 For your safety, discharge the battery below 25% and power down your device before disassembly.

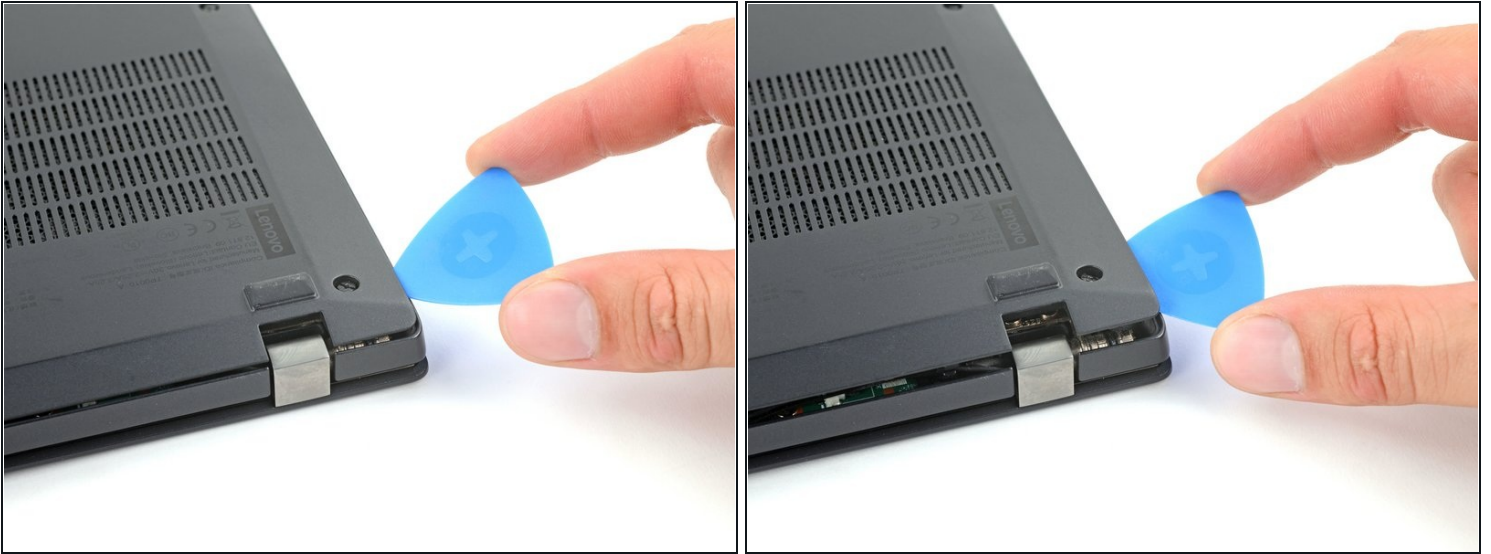
- Use your Phillips #1 screwdriver to fully loosen the five screws on the back cover.
  -  These screws are captive—they won't come out after being unscrewed.

## Step 2 — Release the clips



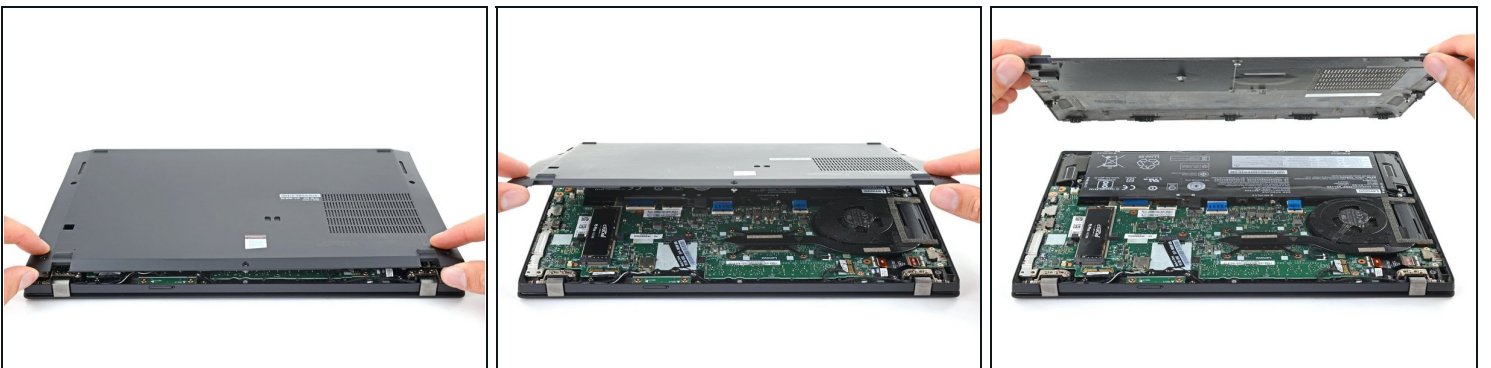
- Orient your laptop so that the screen's silver hinges are closest to you.
- Insert an opening pick between the back cover and the device body near a hinge corner.
- Pry upward to release the clips holding the cover. Listen for a loud click when each clip releases.

### Step 3



- Insert your opening pick between the cover and the device body at the other hinge corner.
- Pry upward to release additional retaining clips.

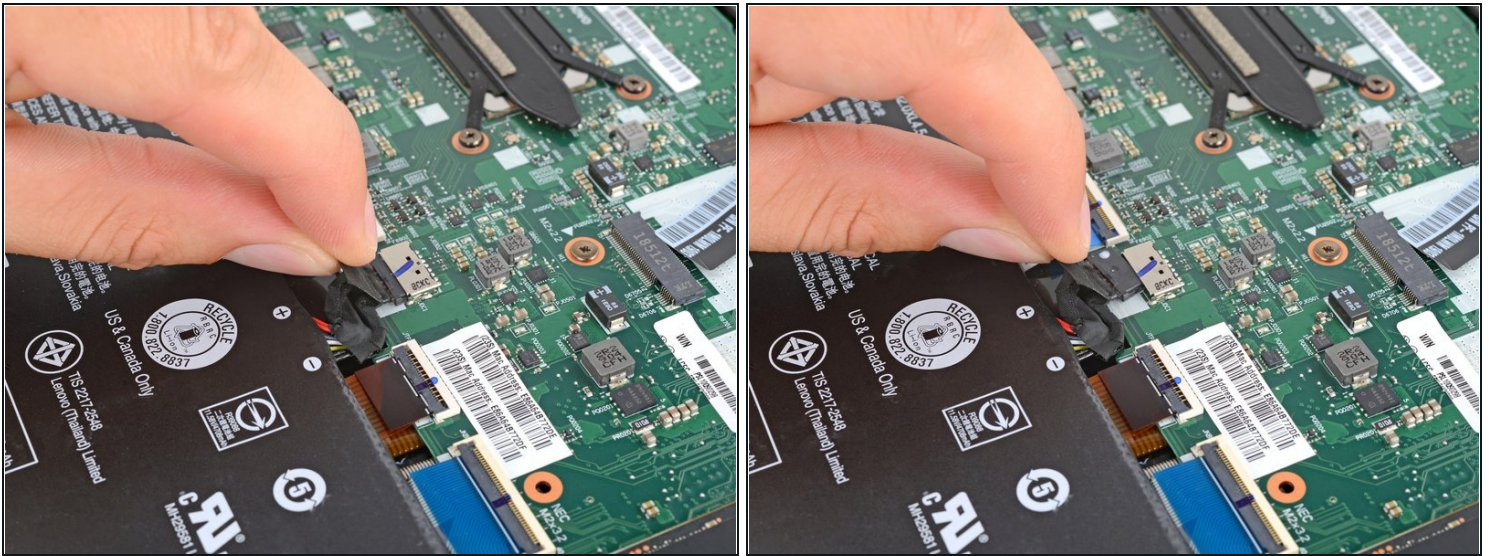
### Step 4 — Remove the back cover



- Grab the front edge of the cover and lift it away from you.
- ⓘ There may be additional clips holding the cover in place. These remaining clips will release easily as you remove the cover.

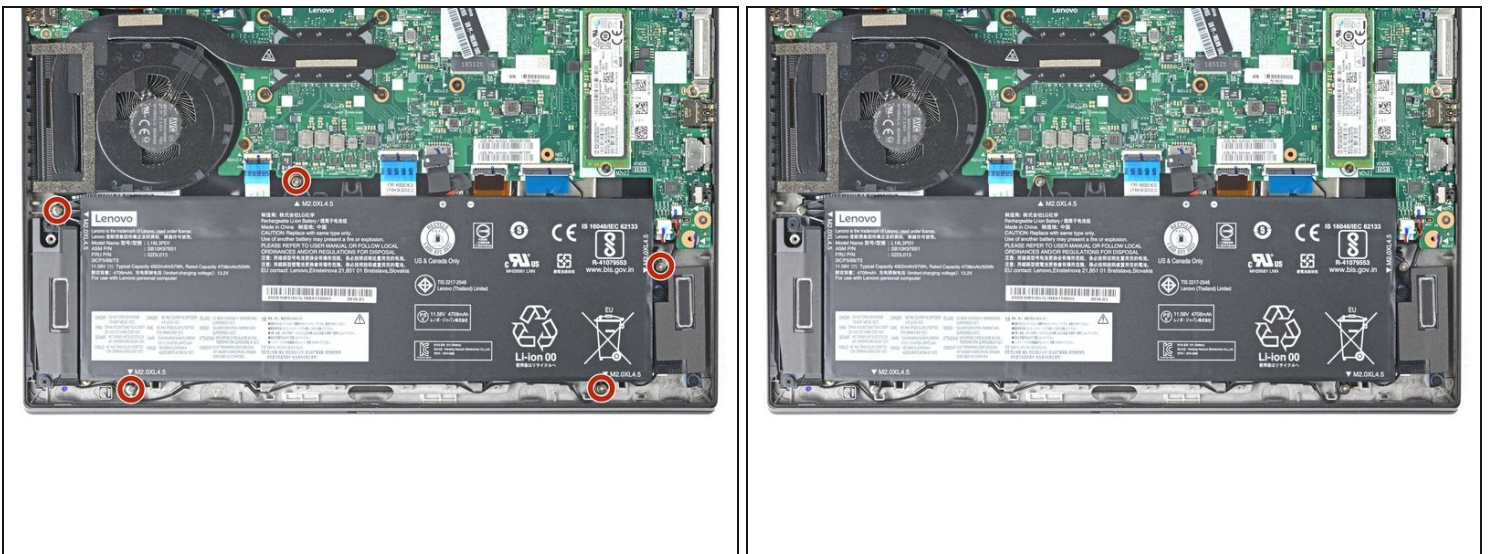


## Step 5 — Disconnect the battery cable



- Grab the battery pull-tab at the head of the connector.
- Pull the connector out of its socket in the direction of the cable.

## Step 6 — Unfasten the battery



- Use a Phillips #0 screwdriver to remove the five 5.2 mm-long screws securing the battery.

## Step 7 — Remove the battery



- Lift the battery straight out of its recess and remove it.

To reassemble your device, follow these instructions in reverse order.

For optimal performance, [calibrate your newly installed battery](#) after completing this guide.

Take your e-waste to an [R2 or e-Stewards certified recycler](#).

Repair didn't go as planned? Try some [basic troubleshooting](#), or ask our [Answers community](#) for help.