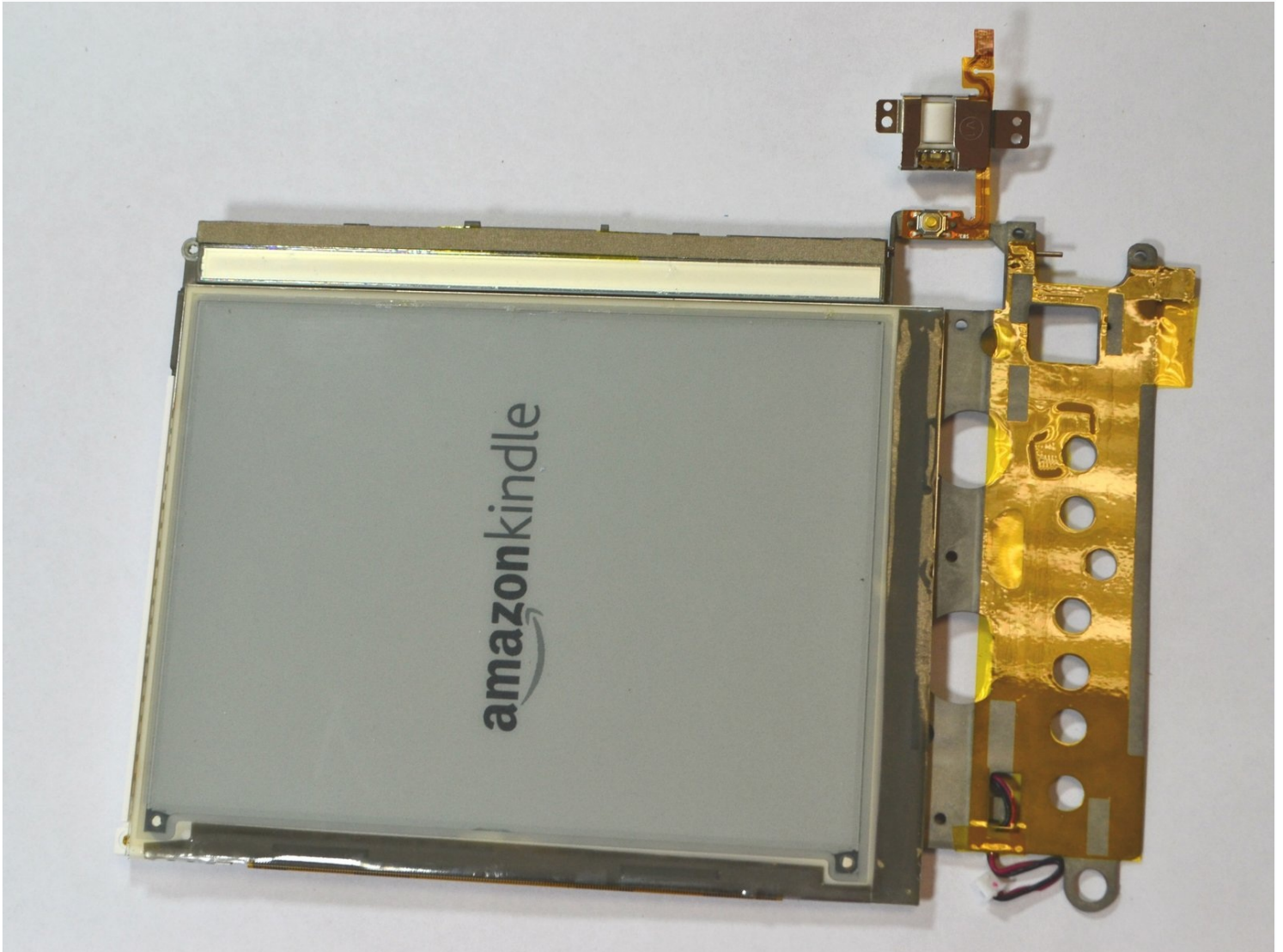




Kindle 1st Generation Screen Replacement

This guide covers the basic steps to replace...

Written By: Samantha Manning



INTRODUCTION

This guide covers the basic steps to replace the screen on the First Generation Amazon Kindle.

TOOLS:

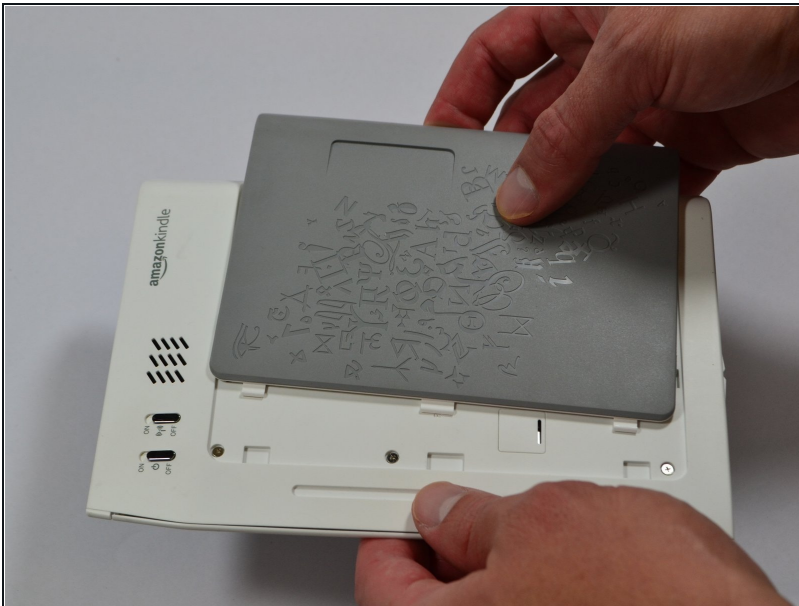
[iFixit Opening Tool](#) (1)

[Phillips #00 Screwdriver](#) (1)

[Spudger](#) (1)

[Tweezers](#) (1)

Step 1 — Battery



- Slide the grey plastic cover laterally off the back of the device.

Step 2



- Use a plastic opening tool to lift the battery on the side closest to the edge of the device.
- Unplug the battery from the device by pinching the white connector and pulling.

⚠ Do not yank the battery or try to disconnect the battery by pulling the wires.

Step 3 — SD Card Reader



- Unscrew eight (8) Phillips #00 screws (3 mm).

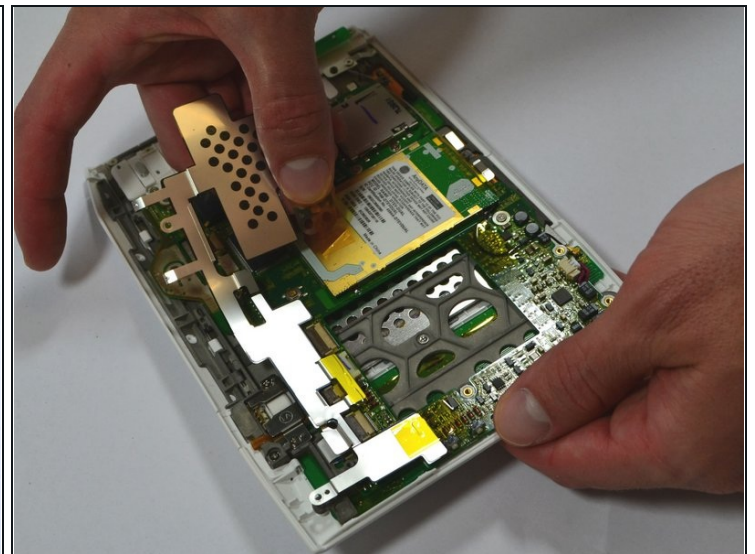
Step 4



- Start at one side of the device. Use a plastic opening tool to separate the casing of the device. Slowly work your way around the entire device.

⚠ Avoid prying between the buttons and the device. This could cause damage to the buttons.

Step 5



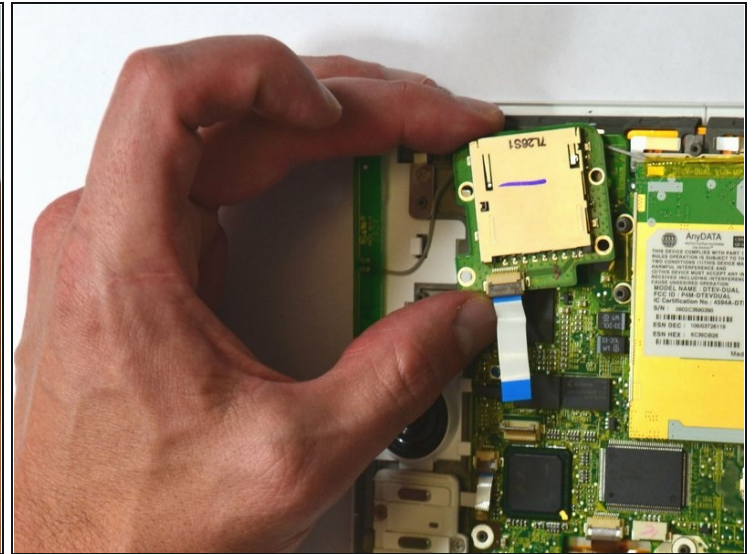
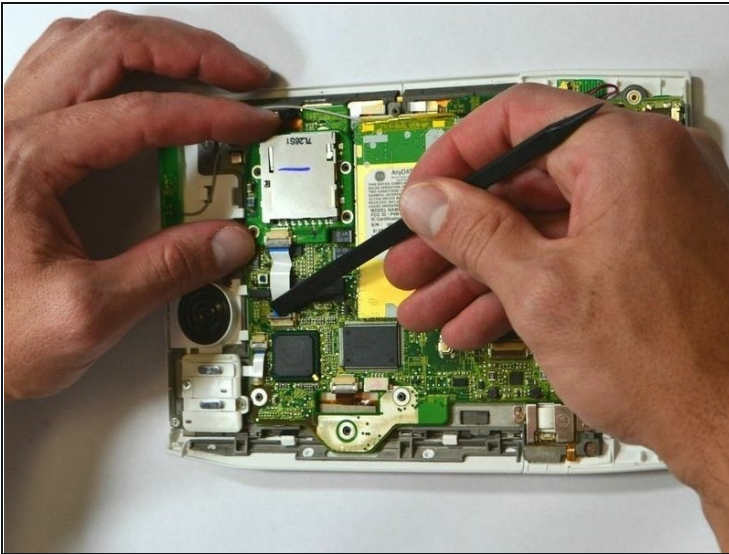
- Unscrew the two (2) Phillips #00 screws (3 mm) which fasten the metal casing shield.
- Slowly remove the metal casing shield by lifting it and carefully peeling up the tape.

Step 6



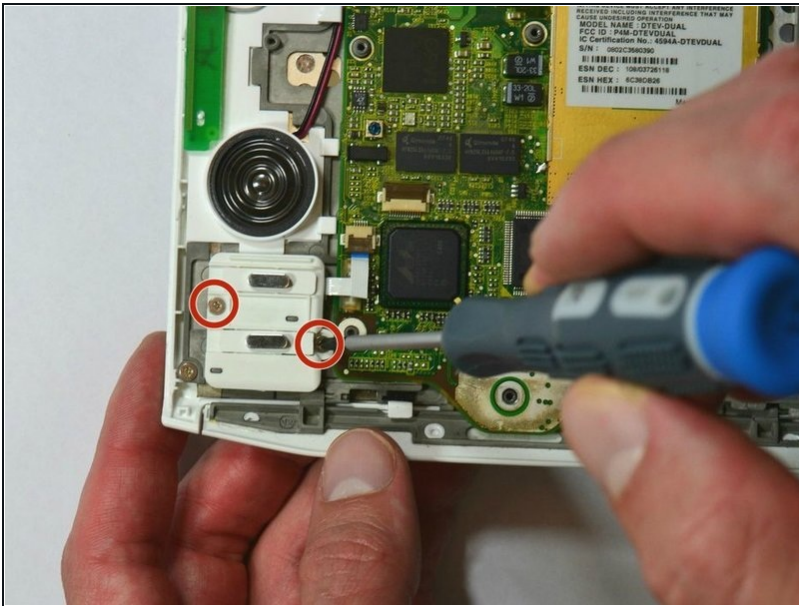
- Remove the four (4) Phillips #00 screws (3 mm) which fasten the SD Card Reader.

Step 7



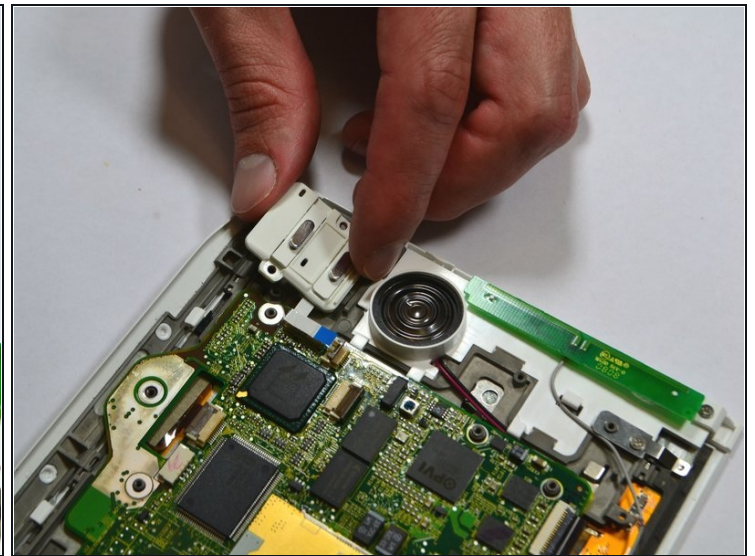
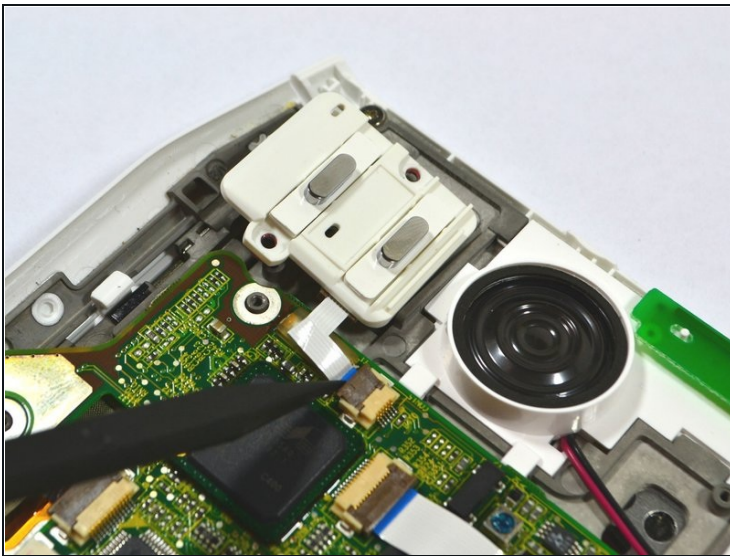
- Lift the flap attaching the blue and white ribbon cable to the motherboard by lifting it vertically with a spudger.
- ① The flap is connected via a hinge. Once you lift the flap, it will stay up and the cable will be loose. Remember to snap it back down during reassembly.
- Carefully lift the SD Card Reader vertically from the motherboard.

Step 8 — Page Turner Keys



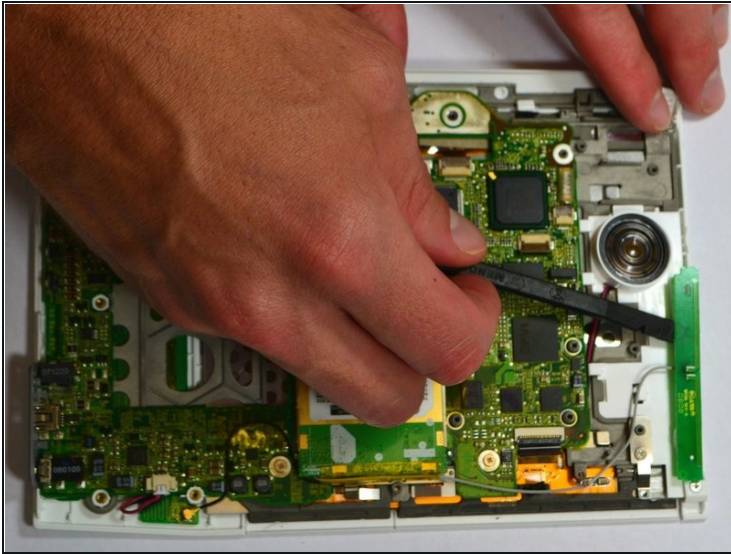
- Remove the two (2) Phillips #00 screws (3 mm) connecting the ON/OFF Power and Wifi Switches.

Step 9



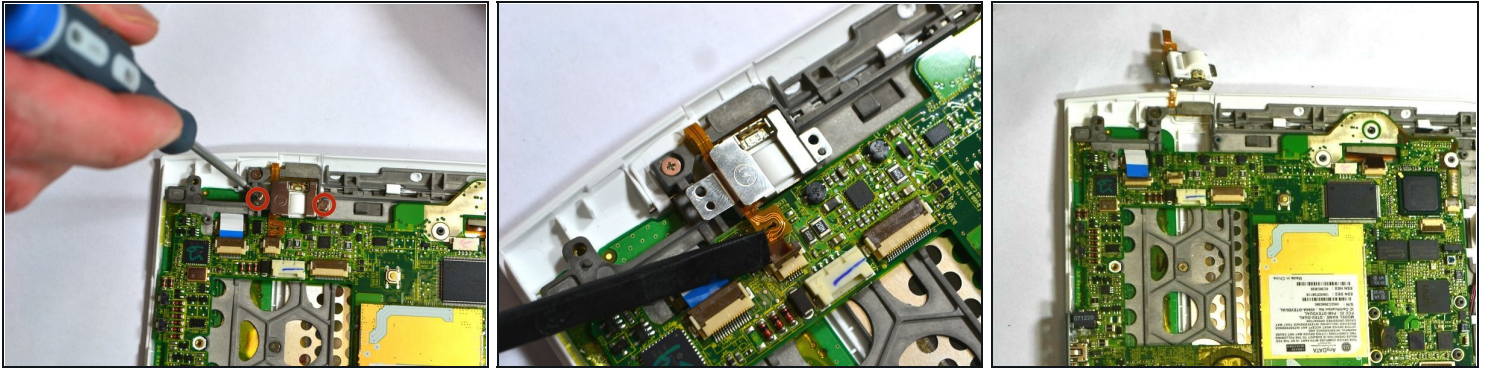
- Lift the flap attaching the blue and white ribbon cable to the motherboard by lifting it vertically with the pointed-end of the spudger.
- ① The flap is connected via a hinge. Once you lift the flap, it will stay up and the cable will be loose. Remember to snap it back down during reassembly.
- Carefully lift the ON/OFF Power and Wifi Switches vertically from the device motherboard.

Step 10



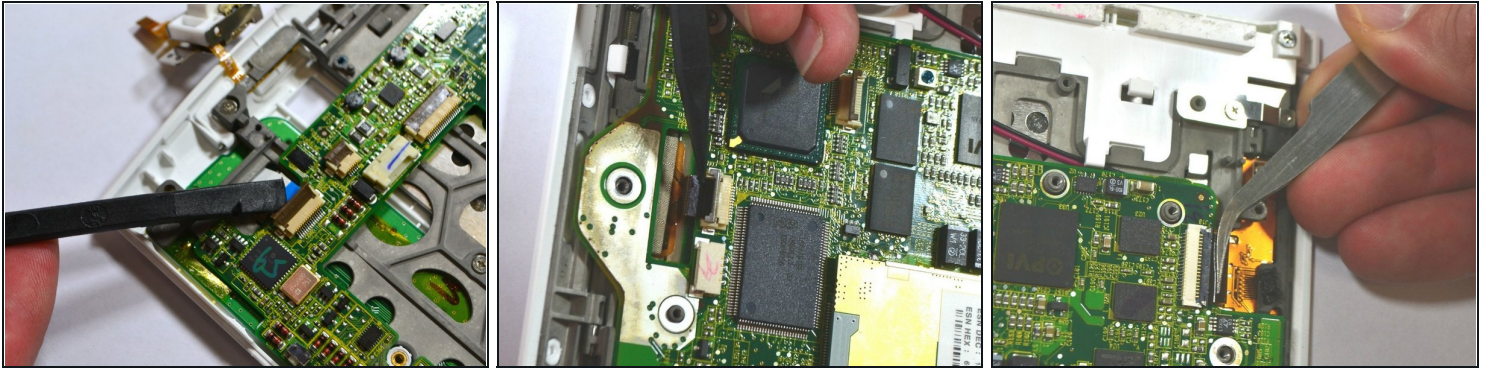
- Use a spudger to remove the Wifi antenna from the device by carefully prying it up off the casing.
 - ⓘ The Wifi antenna is attached to the device by a mild adhesive. Once the antenna is free from the adhesive, set the antenna off to the side.
- ⚠ Do not try to detach the antenna from the motherboard.

Step 11



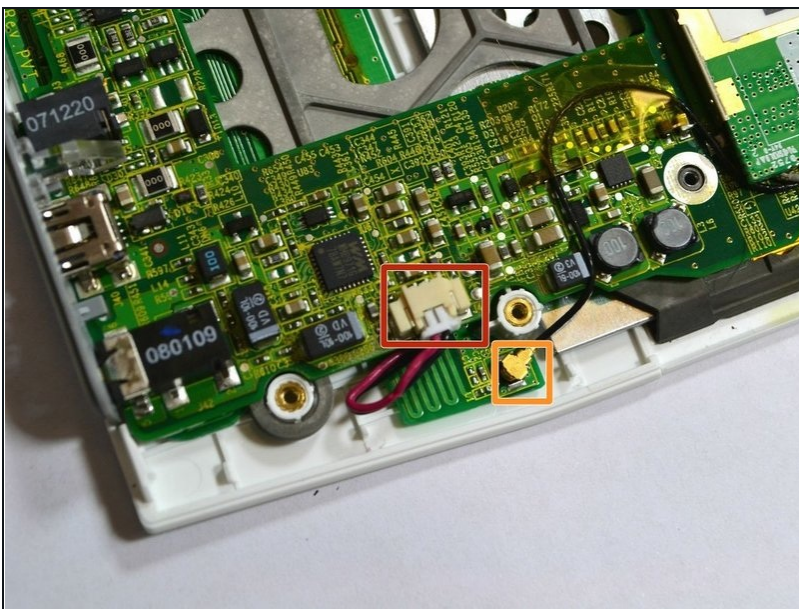
- Unscrew the two (2) Phillips #00 screws (3 mm) attaching the scroll bar.
 - Use a spudger to lift the flap vertically in the second image to release the scroll bar from the motherboard.
 - ⓘ The flap is connected via a hinge. Once you lift the flap, it will stay up and the cable will be loose. Remember to snap it back down during reassembly.
- ⚠ Do not pull the scroll bar off the device. Simply flip it around so it is out of the way for further disassembly, as seen in the third image.

Step 12



- Lift the flap attaching the blue and white ribbon cable to the motherboard by lifting it vertically with the spudger.
- Lift the flap with the pointed-end of the spudger to detach the ribbon cable indicated in the second image.
- ① The flaps are connected via a hinge. Once you lift the flap, it will stay up and the cable will be loose. Remember to snap it back down during reassembly.
- Use [tweezers](#) to pull the ribbon cable in the third image laterally to detach it.

Step 13



- Detach the cable by pulling laterally with tweezers or your fingertips. Do this by grasping the edges of the white connector and pulling laterally.
- Grasp the end of the cable with tweezers or your fingertips and pull upwards to detach it from the motherboard.

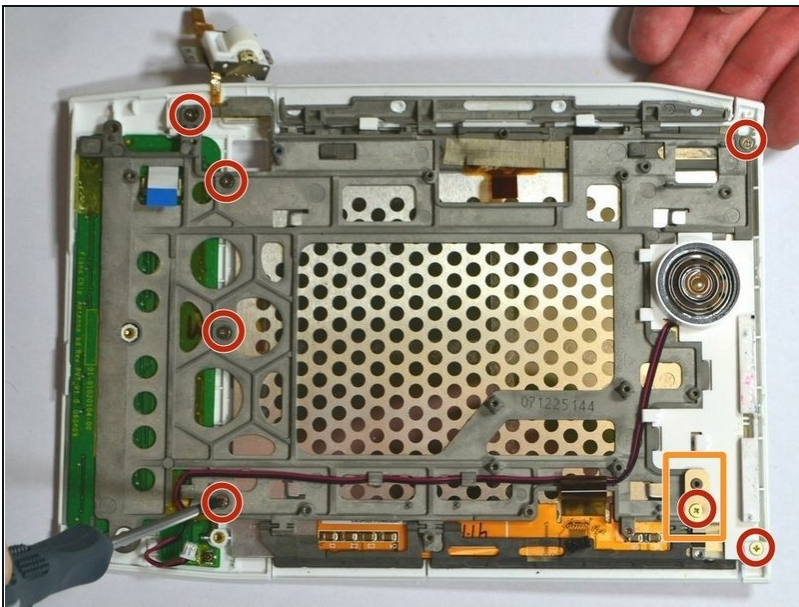
⚠ Do not grasp either cable by the wires and attempt to pull them.

Step 14



- Remove the two (2) Phillips #00 screws (3 mm) which attach the motherboard to the front casing.
- Carefully lift the motherboard off.
- The piece marked in the third image may be loose and fall out freely. If it does not fall off, use your fingers or a plastic opening tool to snap it off. Make sure to place it under the motherboard during reassembly, as found in the image.

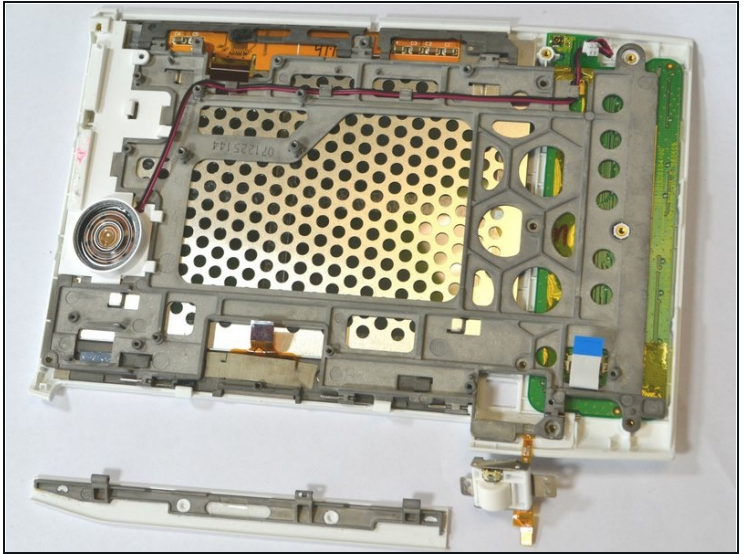
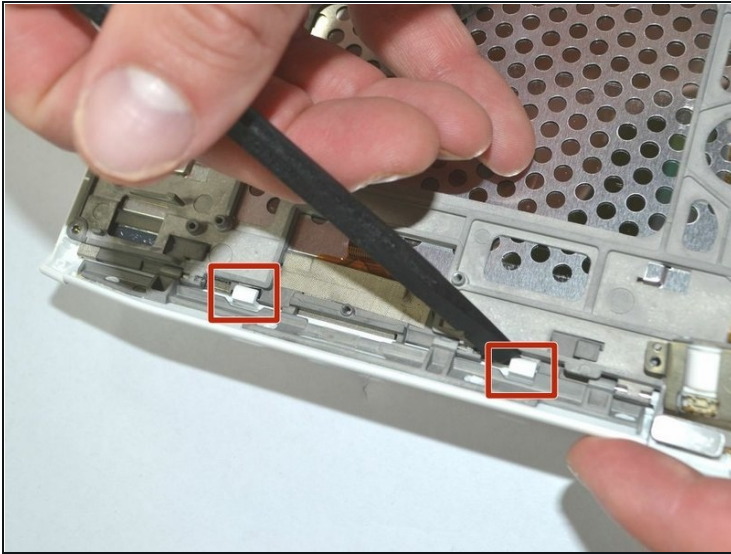
Step 15



- Remove the seven (7) Phillips #00 screws (3 mm) remaining on the frame.

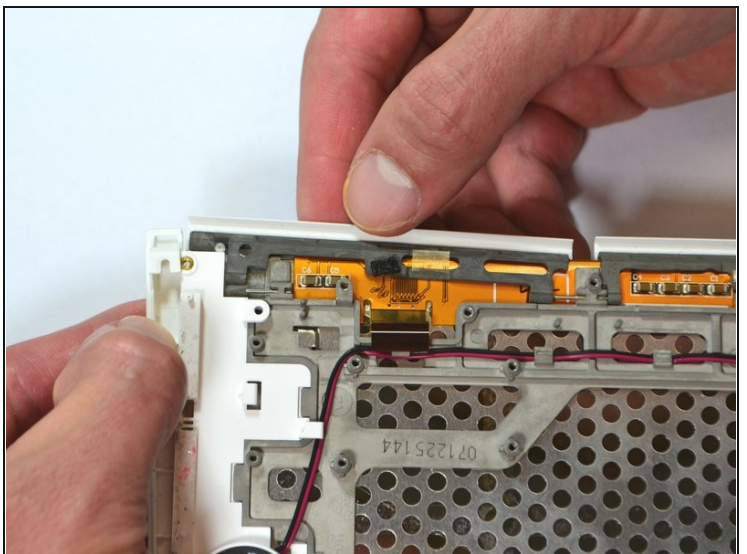
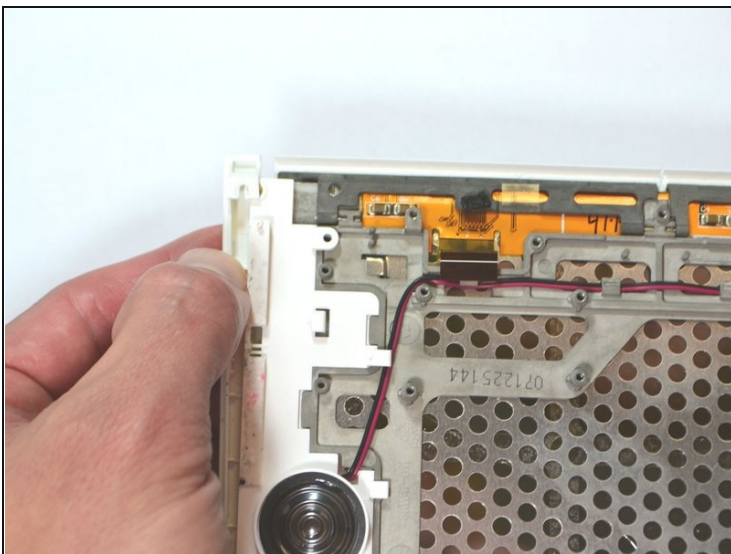
⚠ The orange-marked metal piece is only held down by a screw and will become loose. Make sure to re-position it during assembly.

Step 16



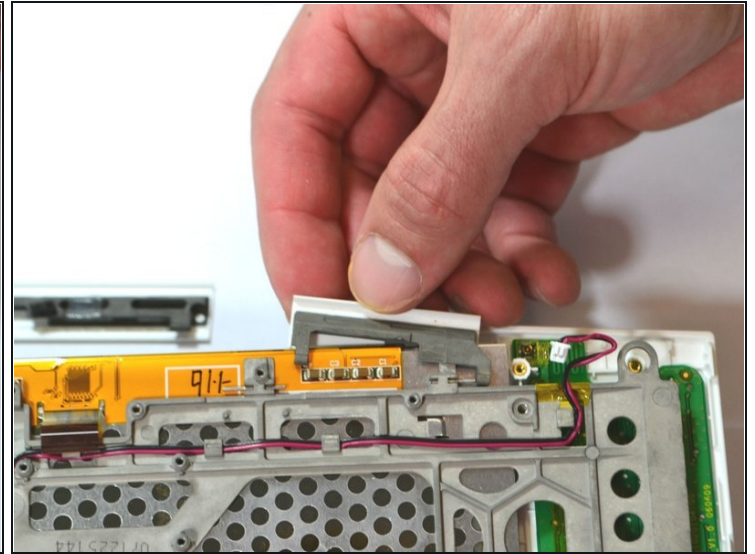
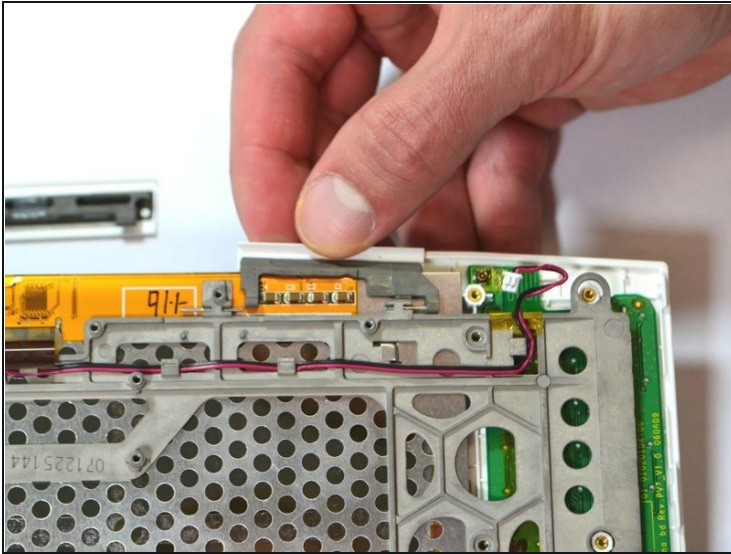
- Press down firmly on the two white tabs, behind the large 'NEXT PAGE' button with the spudger. This will unsnap the front casing from the rest of the device.
- ⓘ The front case will begin to come loose. Do not try to pull it off.
- Slide out the large 'NEXT PAGE' button laterally away from the keyboard.

Step 17



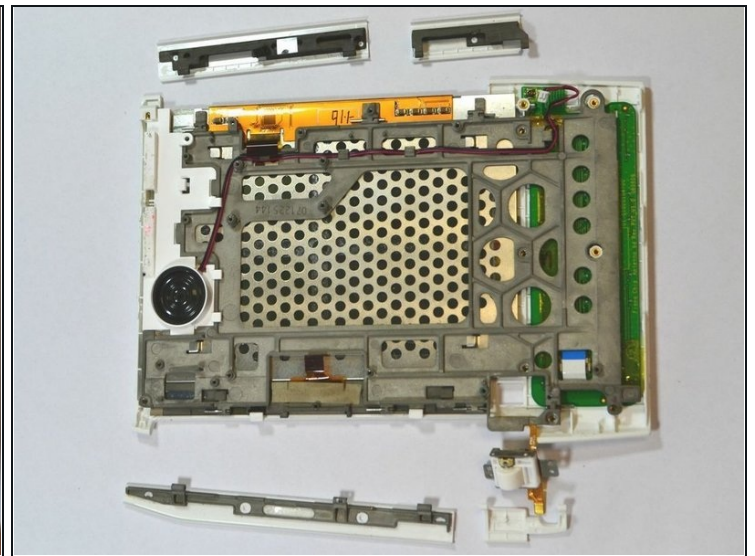
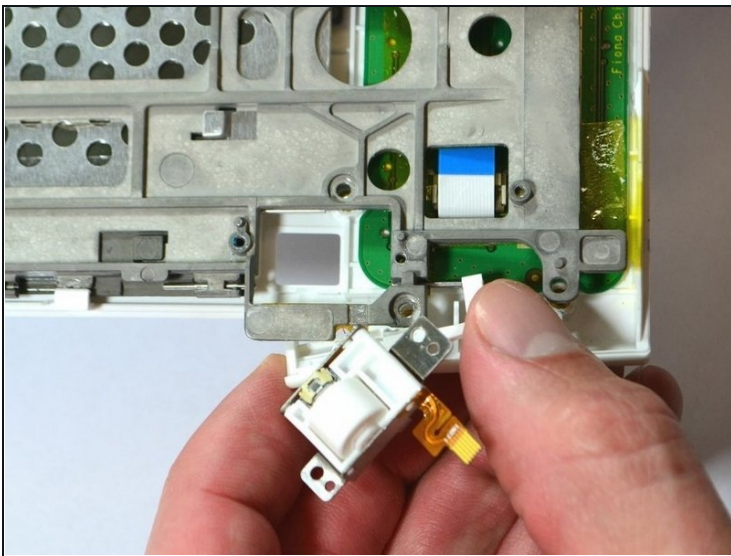
- Slightly lift the top corner of the panel.
- Slide the 'PREV PAGE' button out laterally towards the top corner.

Step 18



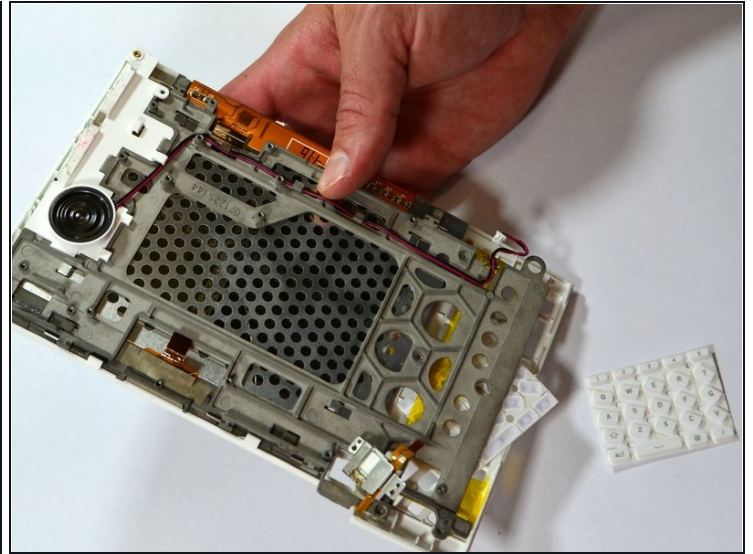
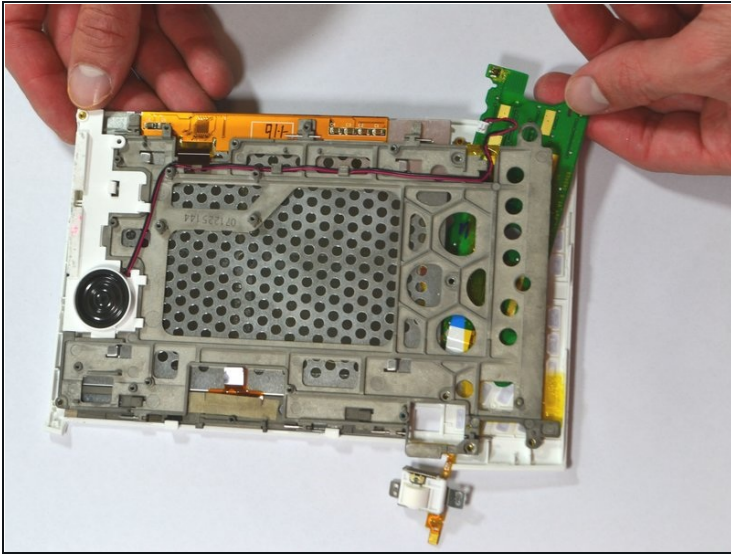
- Slide out the small 'NEXT PAGE' button laterally towards the keyboard.

Step 19



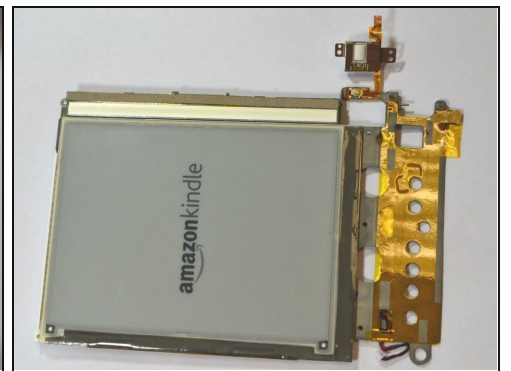
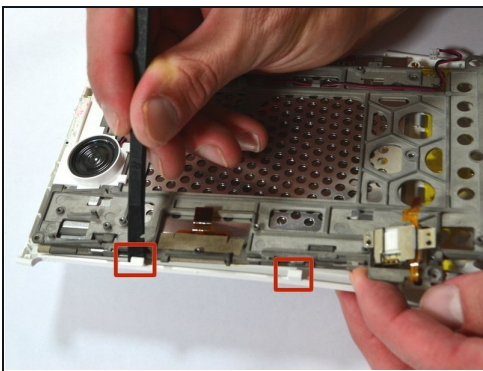
- Slide out the small 'BACK' button laterally towards the keyboard.

Step 20 — Keyboard/Buttons



- The keyboard and the blue and white ribbon cable will slide out horizontally from behind the frame.
- The rubber key pads will slide out from behind the frame.

Step 21 — Screen



- Use a spudger to pry the two white tabs off the edge of the metal frame. This will separate the front cover from the metal frame.
- Use a spudger to break the adhesive holding the front cover onto the screen by sliding it slowly around the edges just underneath the front cover.

⚠ Do not attempt to remove the metal frame of the screen from the front cover until all adhesive as been separated between the front cover and the screen.

To reassemble your device, follow these instructions in reverse order.