



# Medion Akoya MD 98560 Heat Sink Replacement

These laptops found in ALDI stores are some of the cheapest around on the market, and this one is a trick to customers. It specifies high end specs and graphics but when trying to actually achieve these, the CPU overheats and crashes.

Written By: Ikfixda



---

## INTRODUCTION

We will be disassembling the laptop down to the heatsink and CPU, to apply some thermal paste with a higher grade of conductivity.



### TOOLS:

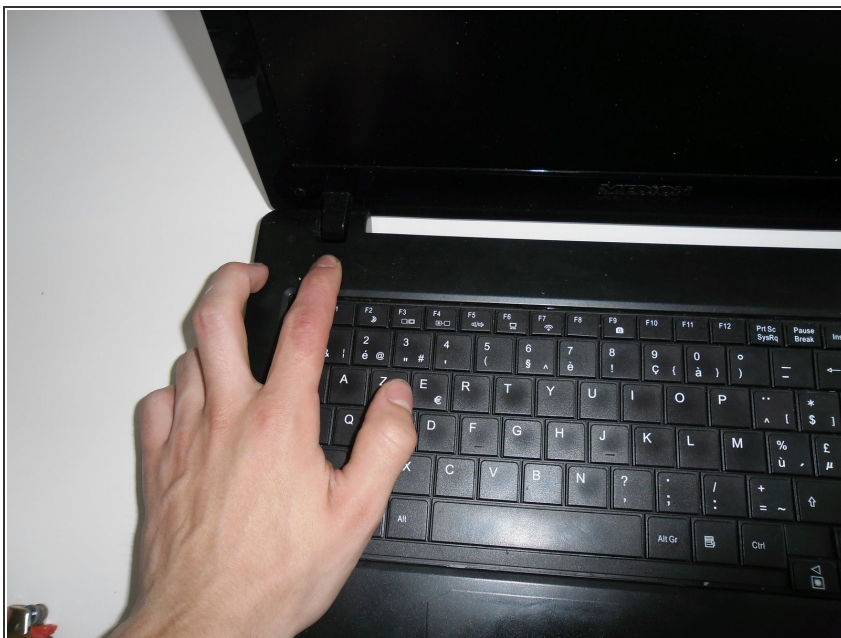
- [Pro Tech Toolkit](#) (1)
-

## Step 1 — Heat Sink



- Remove the battery by sliding both sliders to the left.
- Hold the left slider as you slide the battery away from you.

## Step 2



- Press and hold the power button for 10 - 15 seconds, to release any excess power from the laptop.

## Step 3



- After removing the battery, undo the single screw holding the RAM compartment lid.
- Gently pop out the lid with a few clicks.

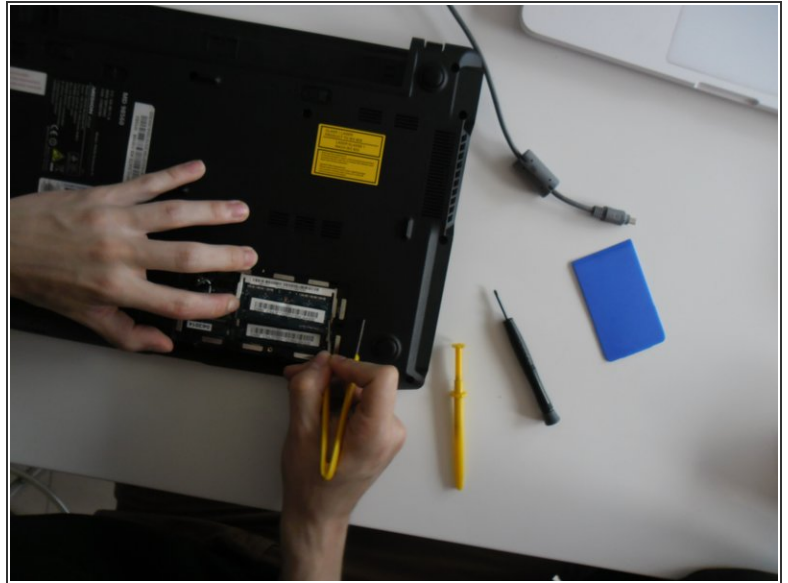
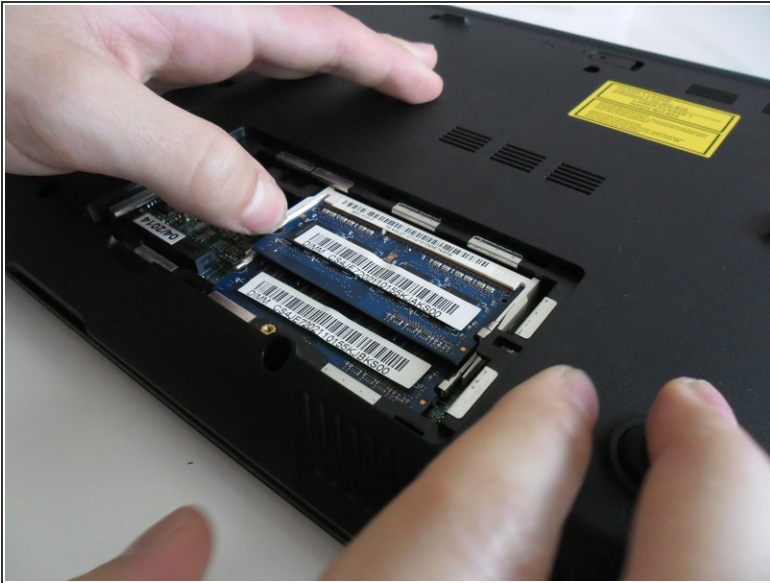
## Step 4



- Undo the white and black cable, and the screw.
- Lift the wifi board up and away from you.



## Step 5



- Pry the metal clips holding the RAM units outward which will make the unit pop upwards.
- Slide the unit out, towards you.

## Step 6



- Undo the single screw holding the hard drive lid.

## Step 7



- Undo the single screw holding the hard drive.

## Step 8



- Use the black tab to slide the hard drive backwards.
- Pry the hard drive up, on the far side and it slides out.



Be careful when prying the hard drive out of the case, you might drop it and damage it.

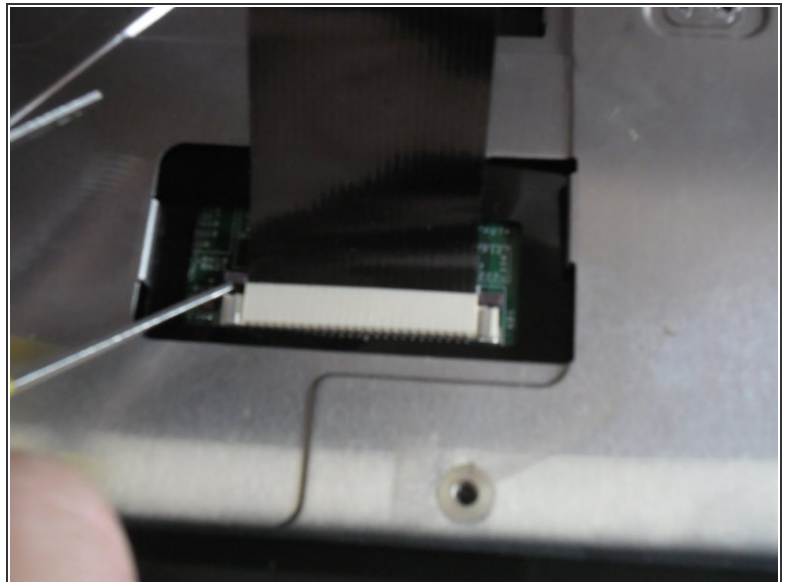
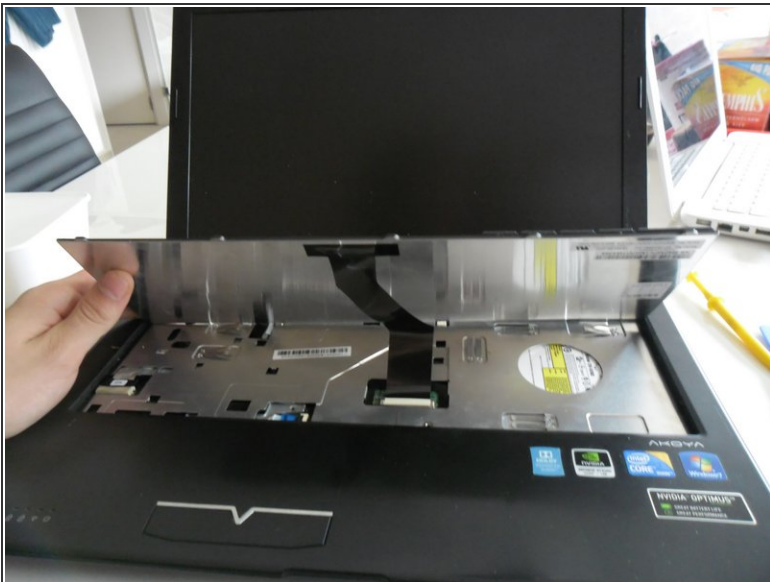



## Step 9



- Push the 4 black tabs located at the top of the keyboard, under the case.

## Step 10



 Be careful when removing the keyboard from the case, it is still attached at the bottom.

- Pry the black tab backwards, to remove the cable.



## Step 11



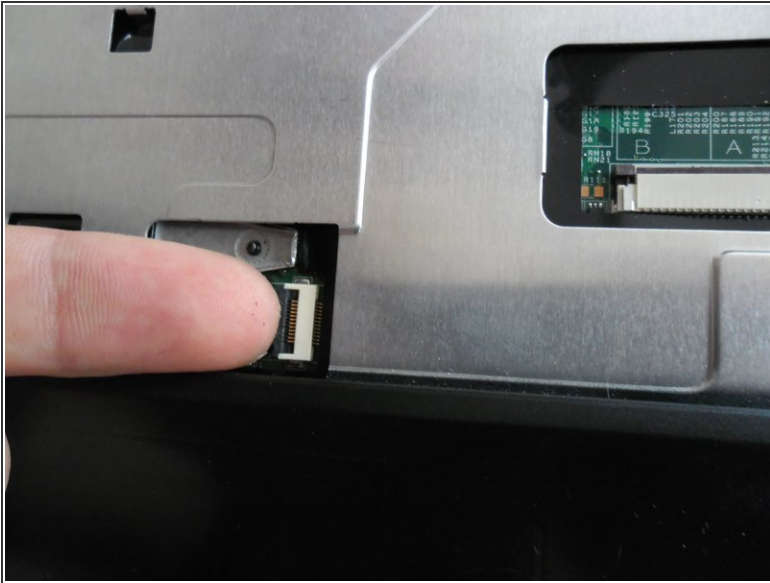
- On the bottom of the case there are 2 sliders, use these to release the optical drive.

## Step 12



- Undo the 11 screws holding the bottom of the case.

## Step 13



- Remove the 2 cables, revealed by removing the keyboard. The cables mentioning "MB" can only be removed after opening the case.

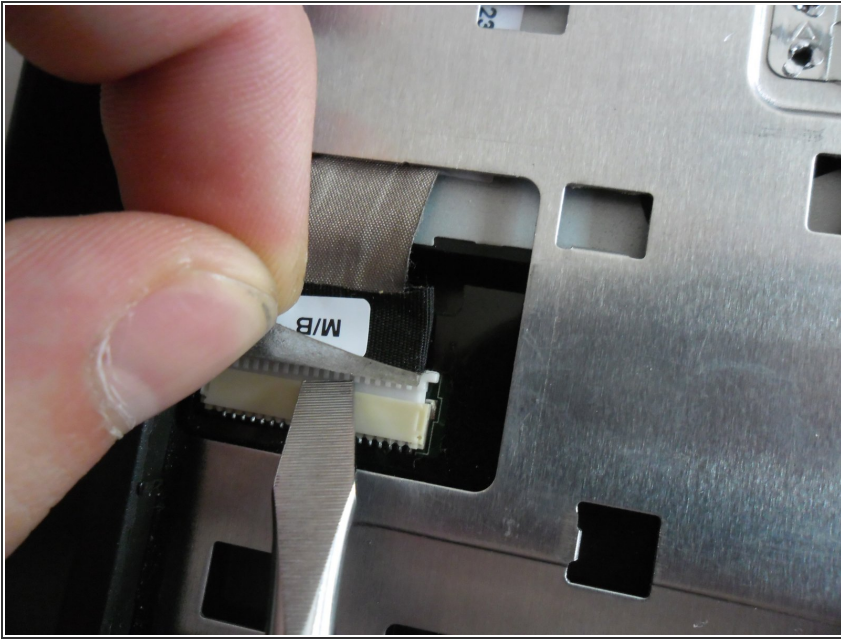
## Step 14



- Pry open the case using something soft, preferably your hands or a spudger.



## Step 15



- When the case is completely loose it will still be attached by the "MB" cables. Remove those before completely removing the case.

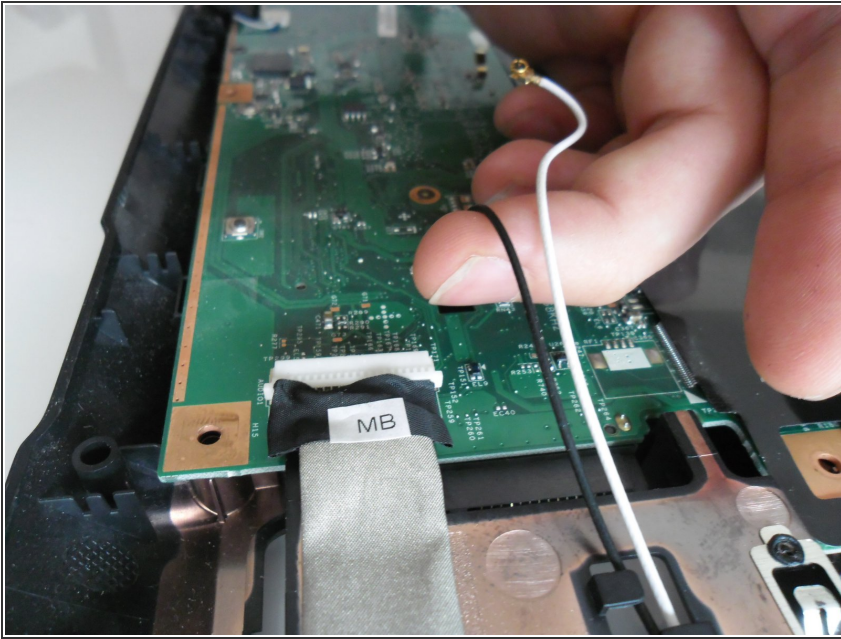
## Step 16



- Undo the single screw holding the motherboard.
- Undo the 4 cables highlighted in blue.

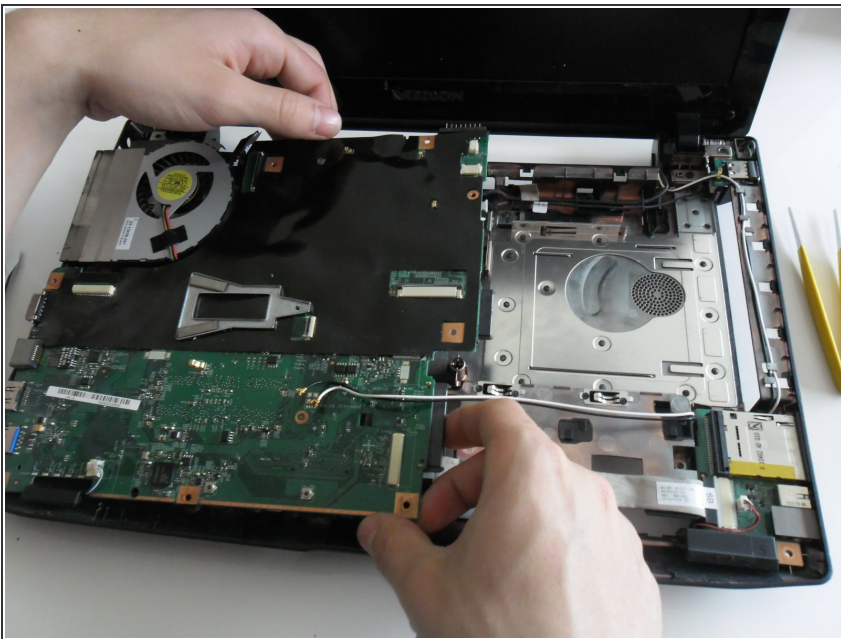


## Step 17



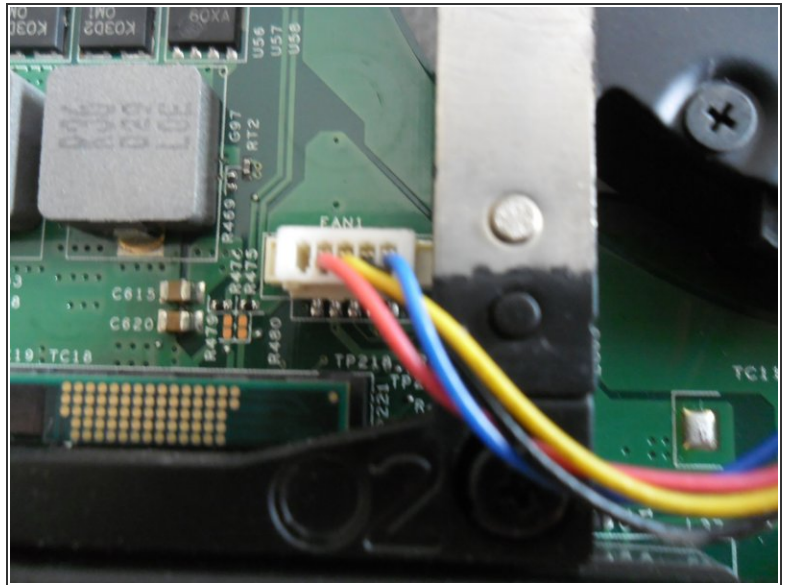
- Also remove the black and white wifi cable from under the motherboard.

## Step 18



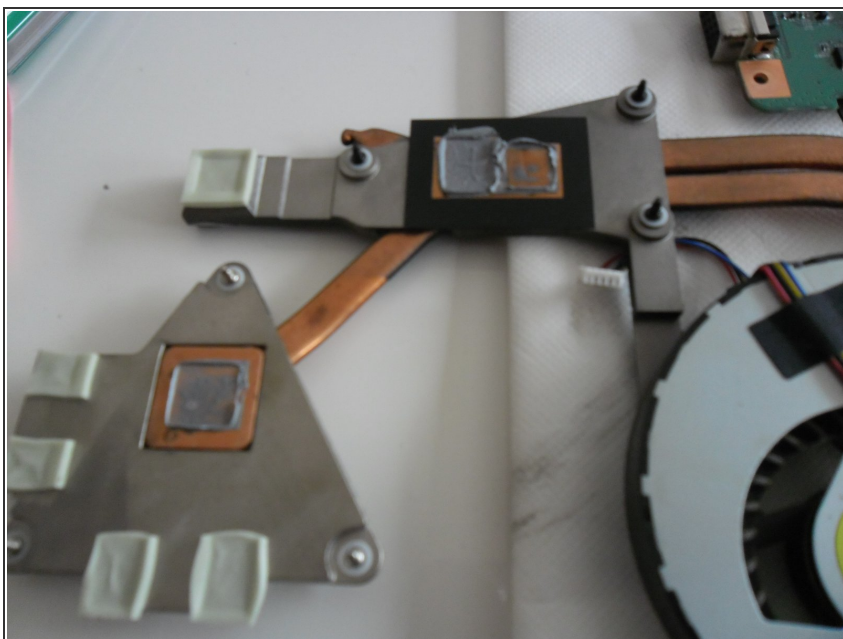
- Lift the motherboard out of its socket. The bottom left may get stuck a bit. Don't force the USB sockets.

## Step 19



- On the flipside of the motherboard is the CPU covered by the heatsink.
- Before removing the heatsink, remove the fan cable looping over the heatsink.
- Remove the 6 screws, holding the heatsink.

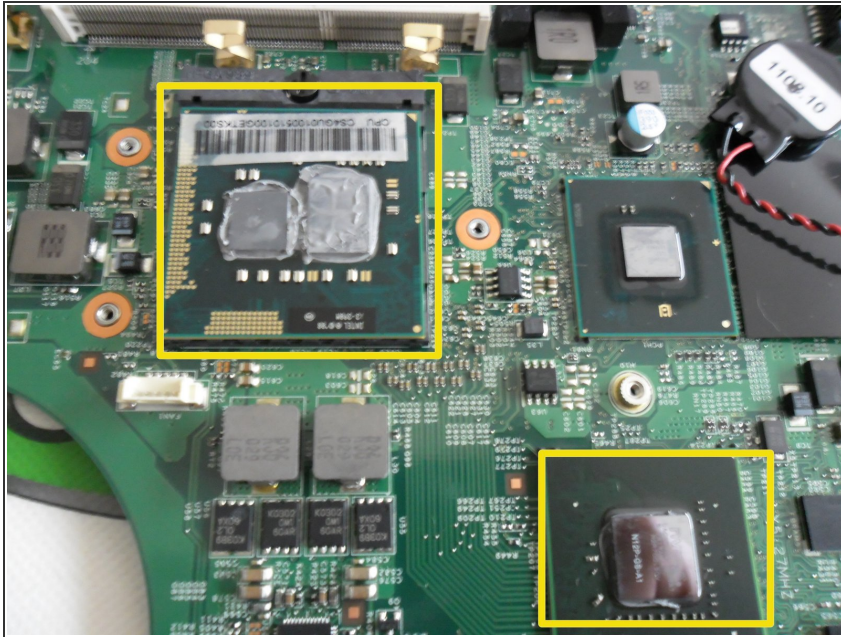
## Step 20



- First you will need a card to scrape off the old paste. Keep a coffee filter ready to clean the card.
- Both the heatsink and CPU's must be totally cleaned of any remaining grease.
- ⓘ The triangular part on the heatsink leads to the graphics card.



## Step 21



- ⚠ Be very thorough, any remaining grease may render your new layer of paste useless.
- ⓘ The top cores are the CPU, still not cleaned.
- ⓘ The bottom core is the newly cleaned video card CPU.

## Step 22






- ⓘ Use alcohol or a oil-free degreaser and coffee filters or a lint-free cloth.



## Step 23



-  Apply the paste on the CPU's very carefully, you don't want certain thermal pastes on electrical circuits.
-  Your paste needs to be distributed evenly on the whole metal cap of the CPU.
  - Reverse engineer this guide to put the laptop back together.
  - Let the paste settle in by letting the computer run for a few consecutive hours.
-  Run a temperature monitor software to check if your application has been effective or not. After a day or two, you may want to stress-test it by running some high end application all together and monitor the temperature.

To reassemble your device, follow these instructions in reverse order.