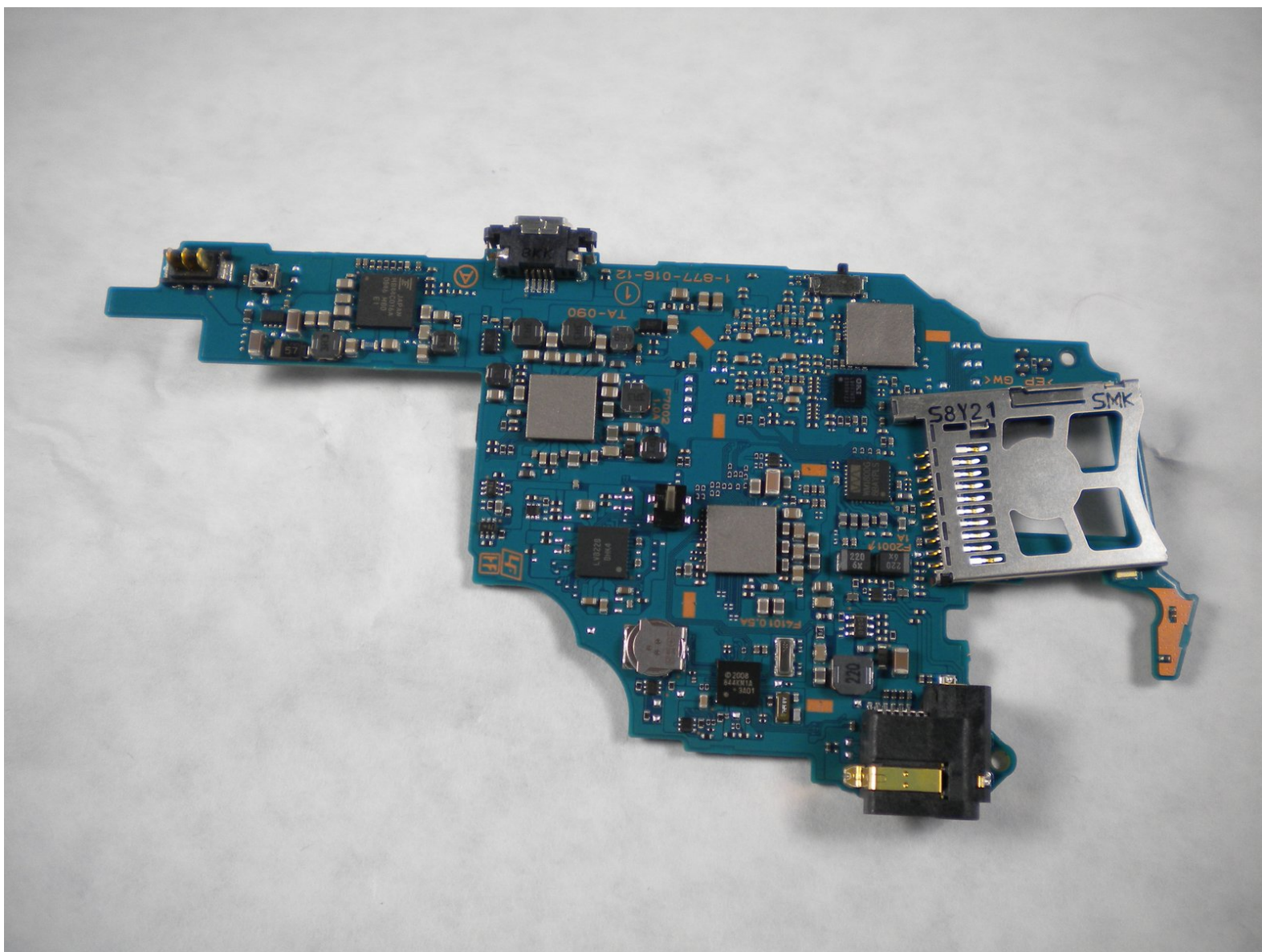




PSP 300x Motherboard Replacement

Below you will find descriptive instructions on...

Written By: mbnewsom



INTRODUCTION

Below you will find descriptive instructions on the proper way to remove the PSP 300x Motherboard Replacement.



TOOLS:

- [Phillips #1 Screwdriver](#) (1)
- [Phillips #00 Screwdriver](#) (1)
- [Spudger](#) (1)



PARTS:

- [Sony PSP 2000/3000 Battery](#) (1)
- [Sony PSP 3000 Battery Door](#) (1)
- [Sony PSP 3000 Front Case](#) (1)
- [Sony PSP 3000 LCD](#) (1)
- [Sony PSP 2000 300x LCD Bracket](#) (1)
- [Sony PSP 300x Home Bar Contact Strip](#) (1)
- [Sony PSP 3000 Right Button Contact Cable](#) (1)
- [Sony PSP 3000 Microphone](#) (1)
- [Sony PSP 2000/3000 Trigger Buttons](#) (1)
- [Sony PSP 2000/300x Trigger Button Brackets](#) (1)
- [Sony PSP 3000 Wi-Fi Antenna](#) (1)
- [Sony PSP 3000 Analog Stick](#) (1)
- [Sony PSP 3000 Left Button Contact Cable](#) (1)
- [Sony PSP 3000 Button Set](#) (1)
- [Sony PSP 3000 DC-In Power Jack](#) (1)
- [Sony PSP 2000 DC-In Power Jack](#) (1)
- [Sony PSP 2000/3000 Speaker Set](#) (1)
- [Sony PSP 300x TA-090 Motherboard](#) (1)

Step 1 — Battery



- Place the PSP face down and locate the battery cover on the left side of the device.
- Lift and remove the battery cover to reveal the battery.
- Remove the battery.

Step 2 — Casing



- Peel back the warranty sticker that is behind the battery with a spudger or your fingernail.

Step 3



- Unscrew all four screws from the back of the PSP with the Phillips #00 Screwdriver.
 - Two are located behind the battery's warranty sticker.
 - Two are located on the right side of the PSP.

Step 4



- Next, unscrew the two screws located at the top of the PSP.

Step 5



- Then, remove the single screw from the bottom edge of the PSP (which is positioned next to the barcode).

Step 6



- Slide the spudger in between the outer casing of the PSP, beginning at the "R" shoulder button, and gently pry off the casing.
- Remove the front casing completely.

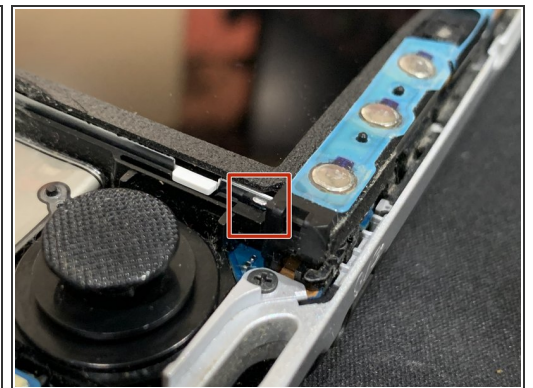
Step 7 — LCD Screen



- Push the homebar to the right to release the tab located on the right side of the LCD screen.

⚠ DO NOT completely remove the homebar, as it is still connected by ribbon cables.

Step 8

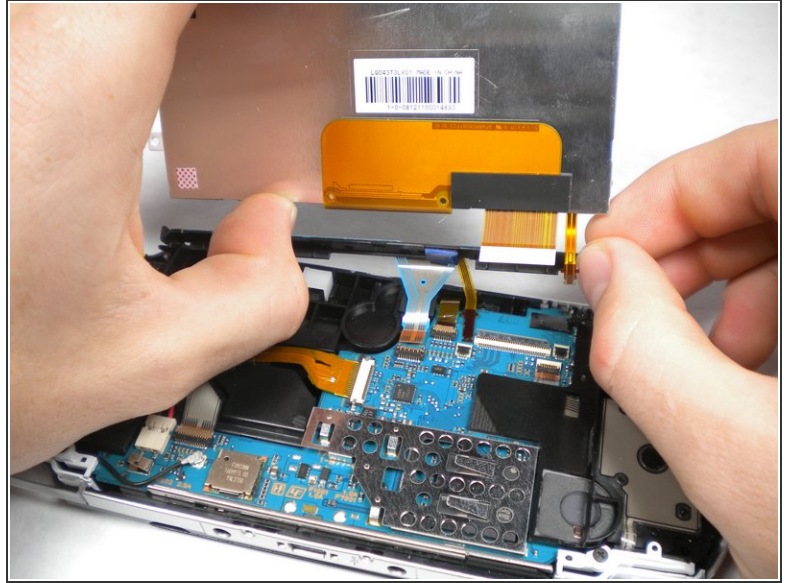
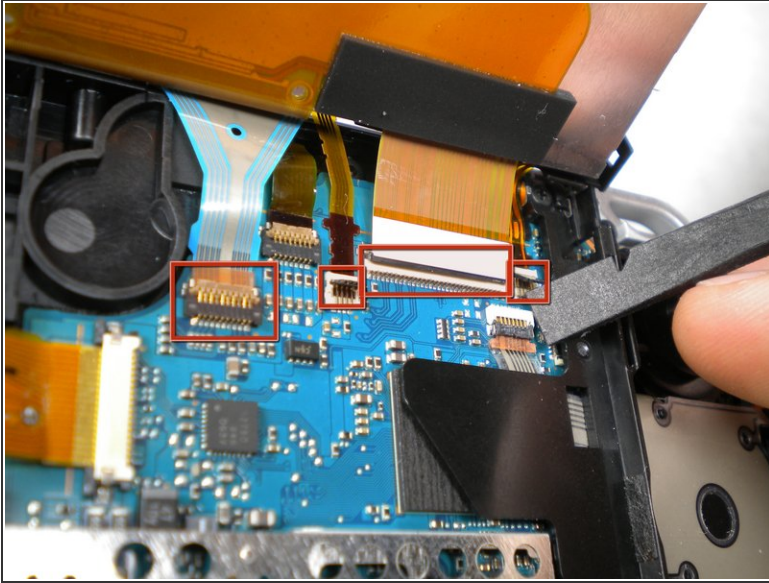


- Slowly lift the LCD screen off the PSP starting at the top edge corner.

⚠ Again, the LCD screen is attached by ribbon cables, so do not remove it completely.

ⓘ Orientation of PSP is flipped in photo.

Step 9



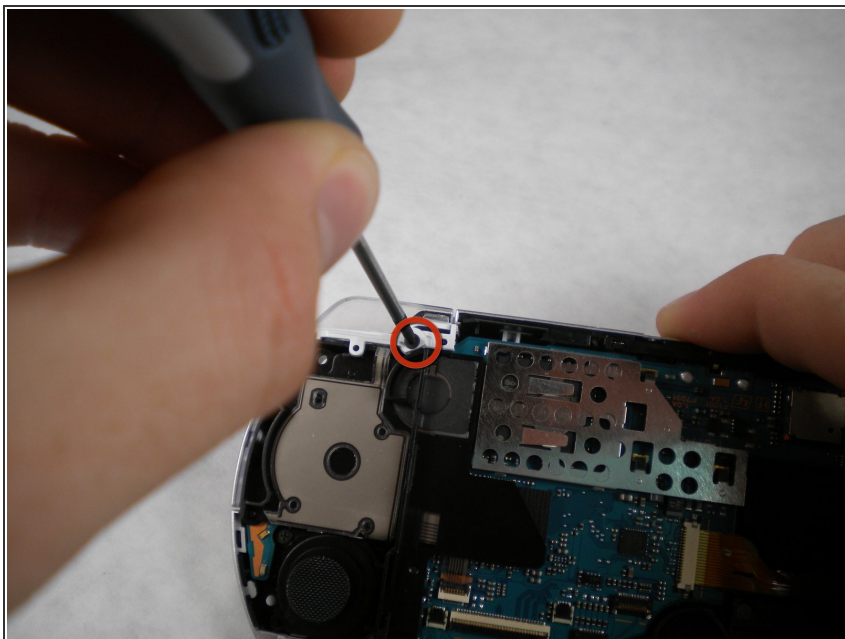
- Flip the small brown locks on the four ribbon cable connectors up using a spudger or fingernail.
- Pull all four ribbon cables out.
- Now remove the LCD screen and homebar from the PSP.

Step 10



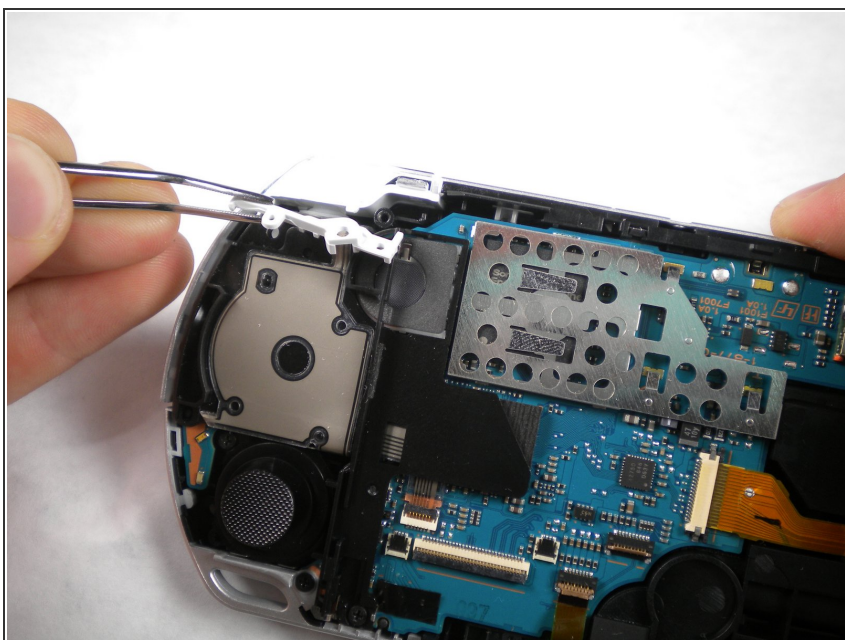
- Remove the metal tab that lies above the LCD screen.
- ☑ Upon reassembly, make note that the stamped lettering faces down, and the large tab fits just above the motherboard to the right hand side of the left trigger.

Step 11 — Trigger Buttons



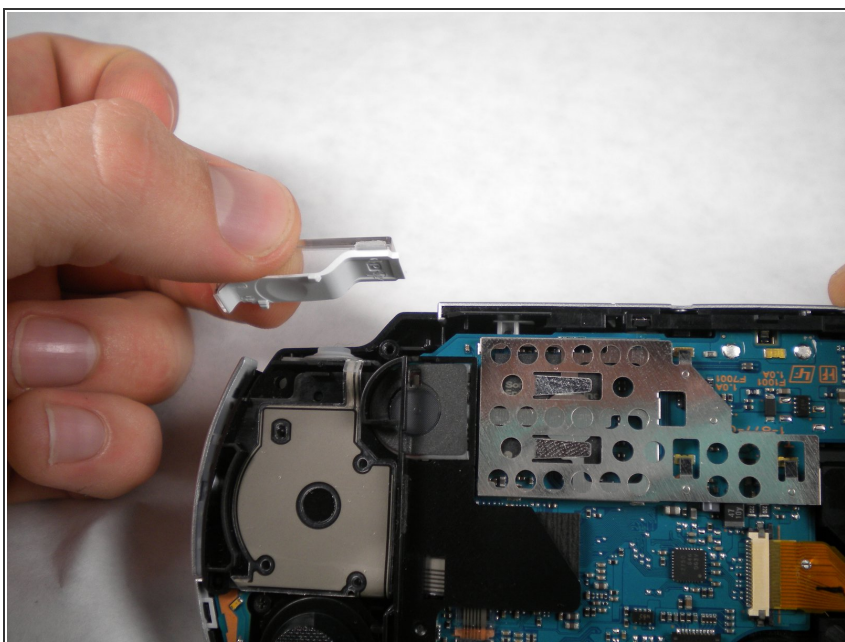
- Remove the screw securing 'L' trigger to the PSP.

Step 12



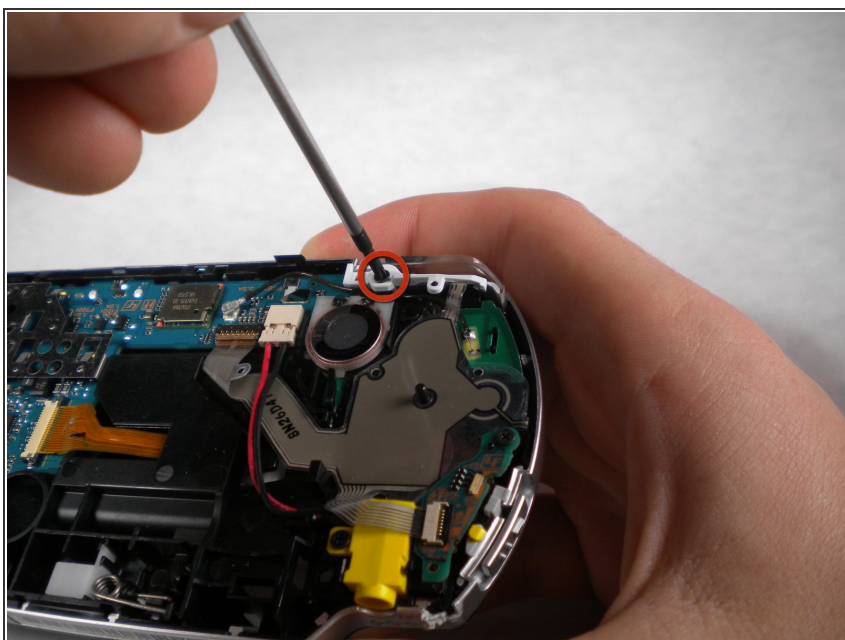
- Remove the white plastic piece that holds the 'L' trigger in place.

Step 13



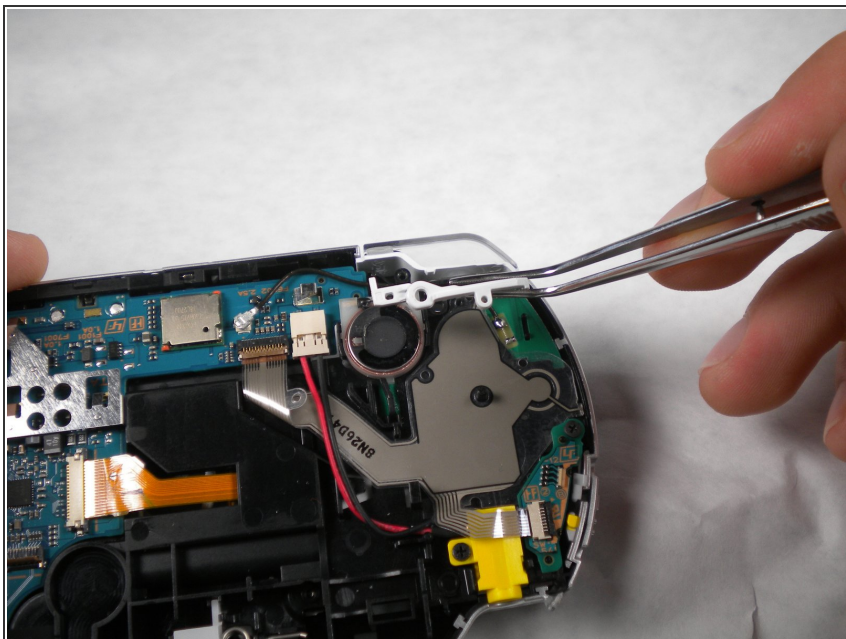
- Remove the 'L' trigger from the PSP.

Step 14



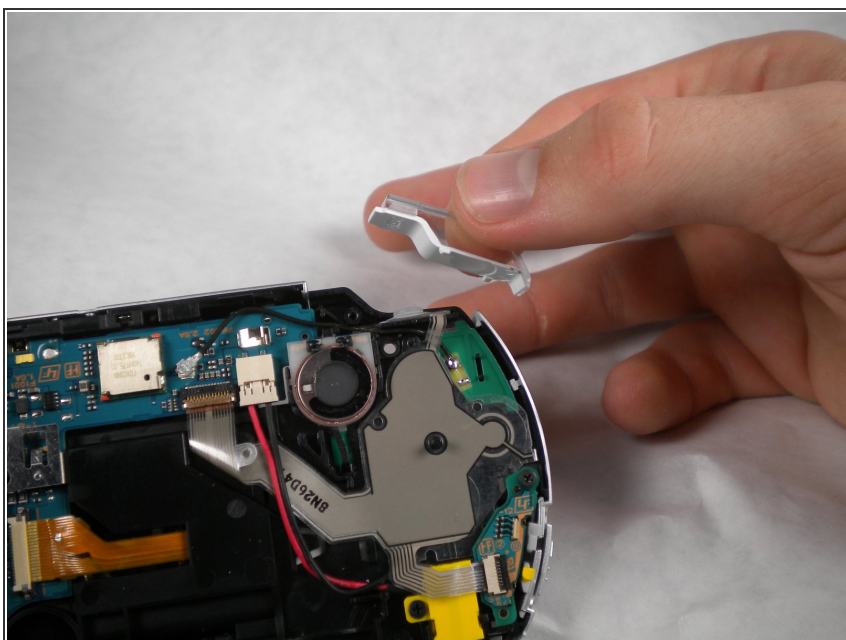
- Remove the screw securing the 'R' trigger.

Step 15



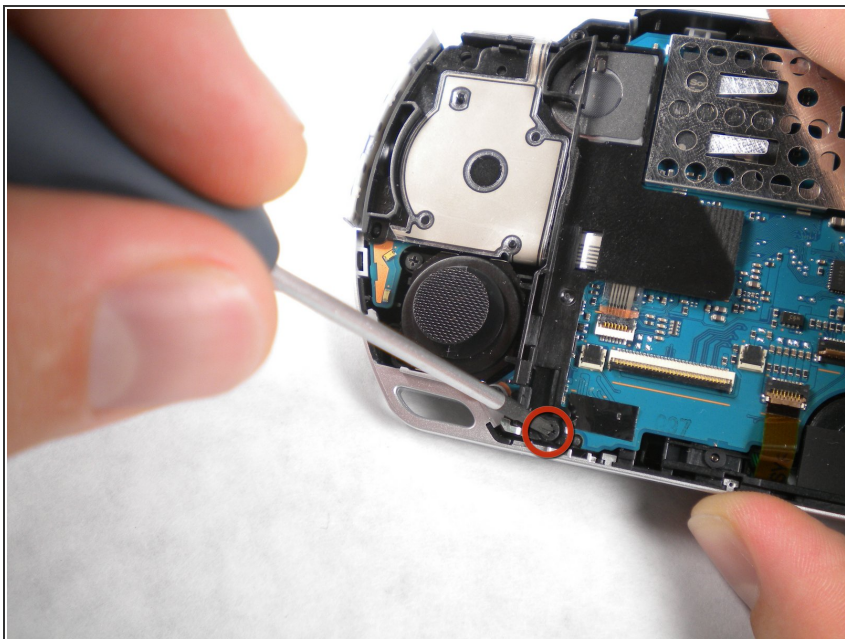
- Remove the white plastic piece that holds the 'R' trigger in place.

Step 16



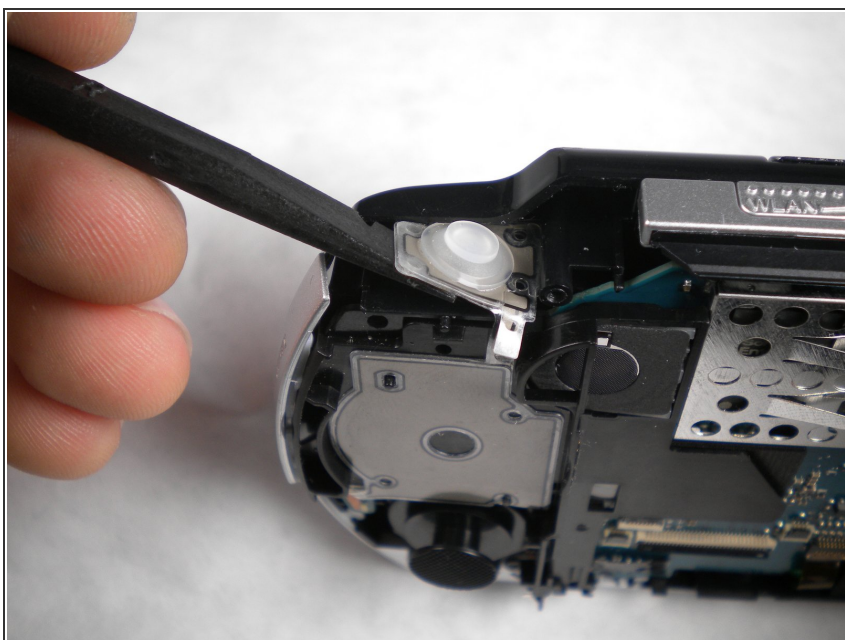
- Remove the 'R' trigger from the PSP.

Step 17 — Analog Stick



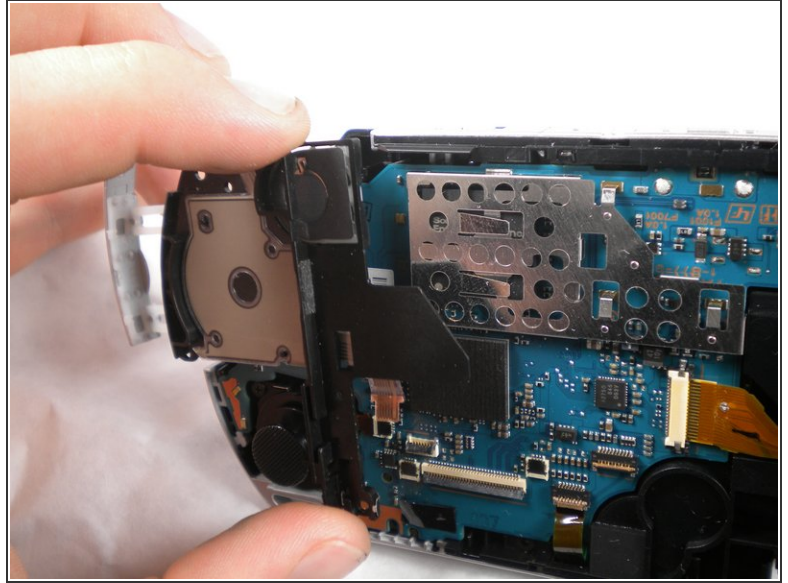
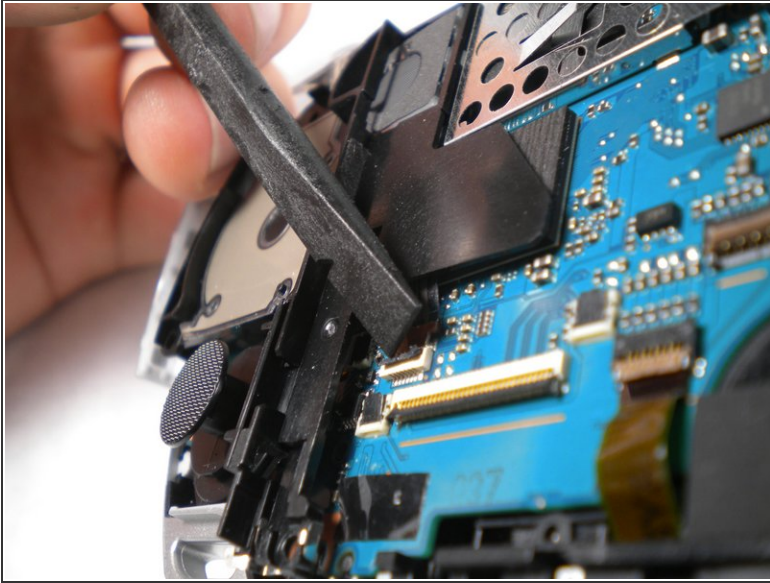
- Remove the screw from the bottom left edge of the PSP.

Step 18



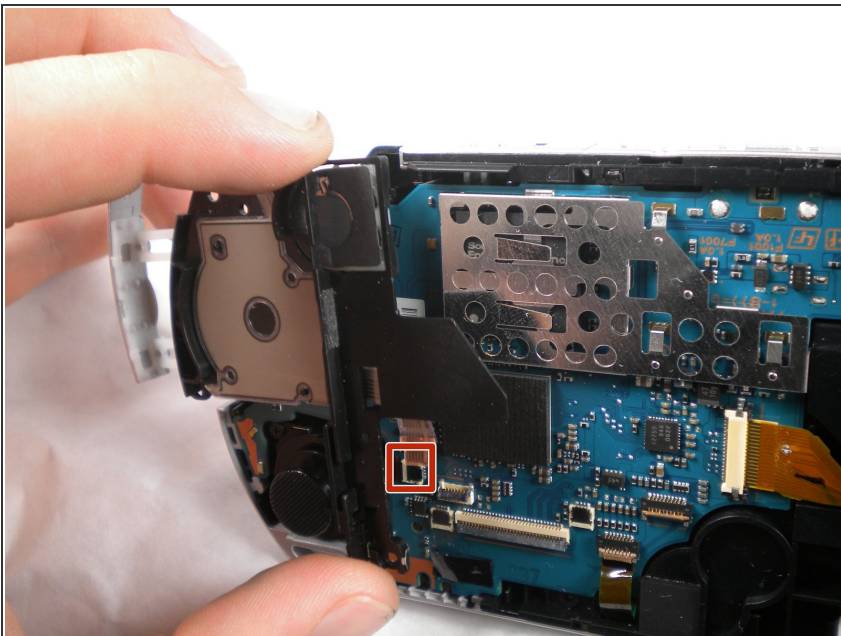
- Being careful not to break the ribbon cable, use the spudger to peel the adhesive button of the the 'L' trigger off the PSP.

Step 19



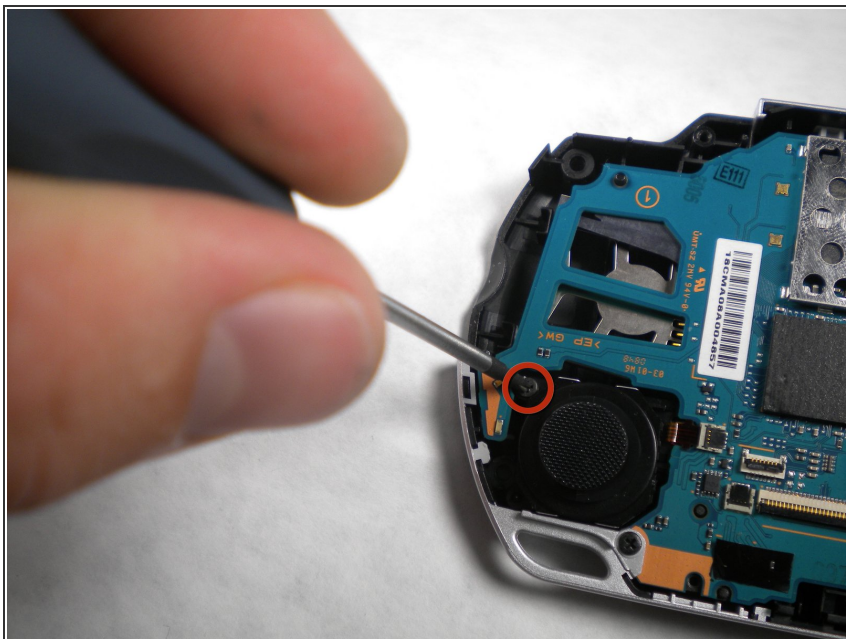
- Using a fingernail or spudger, flip up the retaining bracket on the d-pad and 'L' trigger ribbon cable.
- Lift the black plastic bracket along with the d-pad contact pad, disconnecting the ribbon cable as you lift.

Step 20



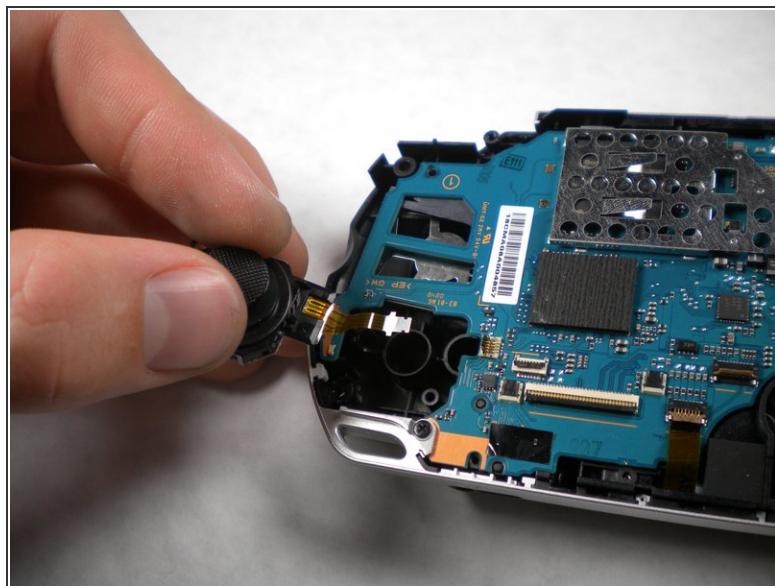
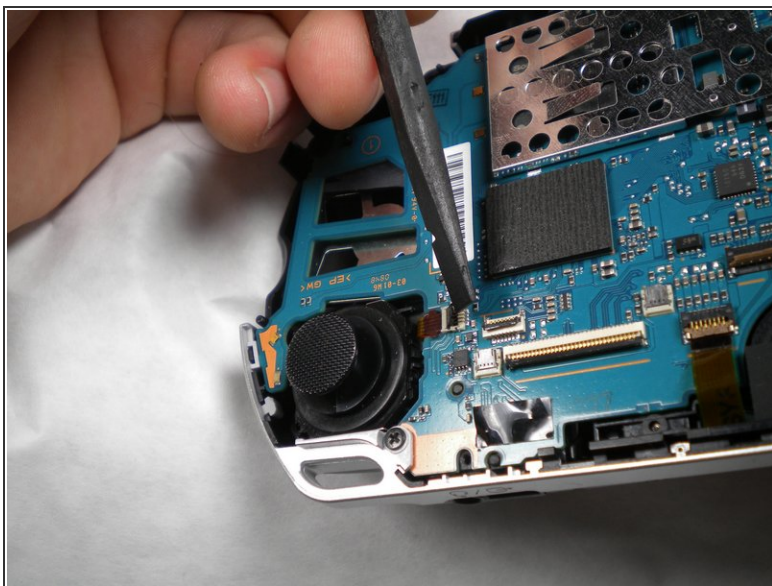
- Remove the cable from the connector and remove the entire black piece from the PSP.

Step 21



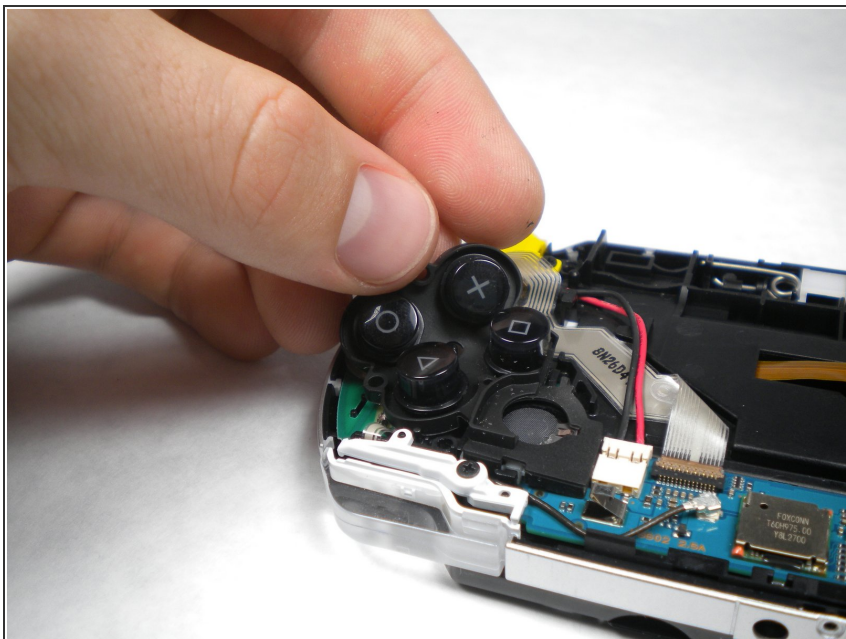
- Remove the screw holding the analog stick in place.

Step 22



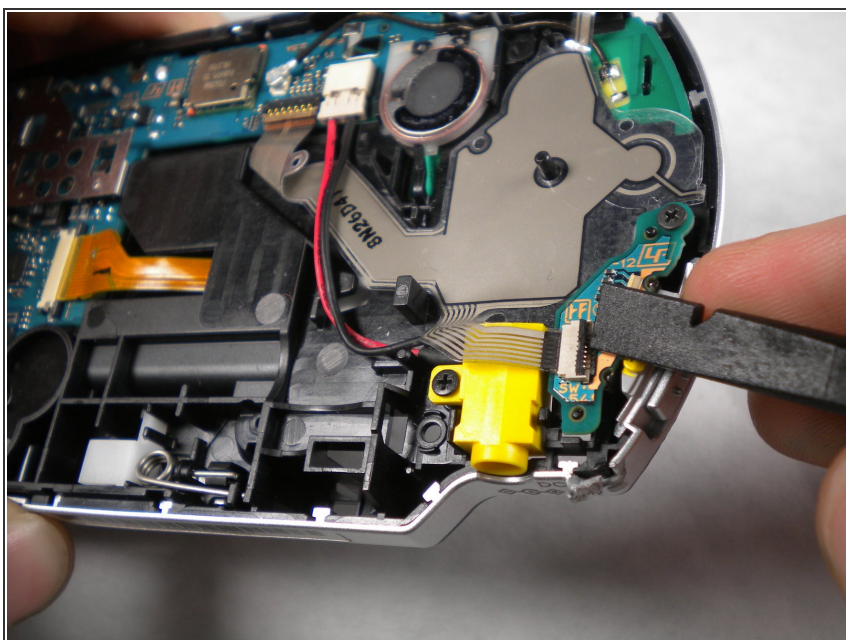
- Flip up the lock on the analog sticks ribbon cable.
- Remove the analog stick from the PSP.

Step 23 — Button Pad



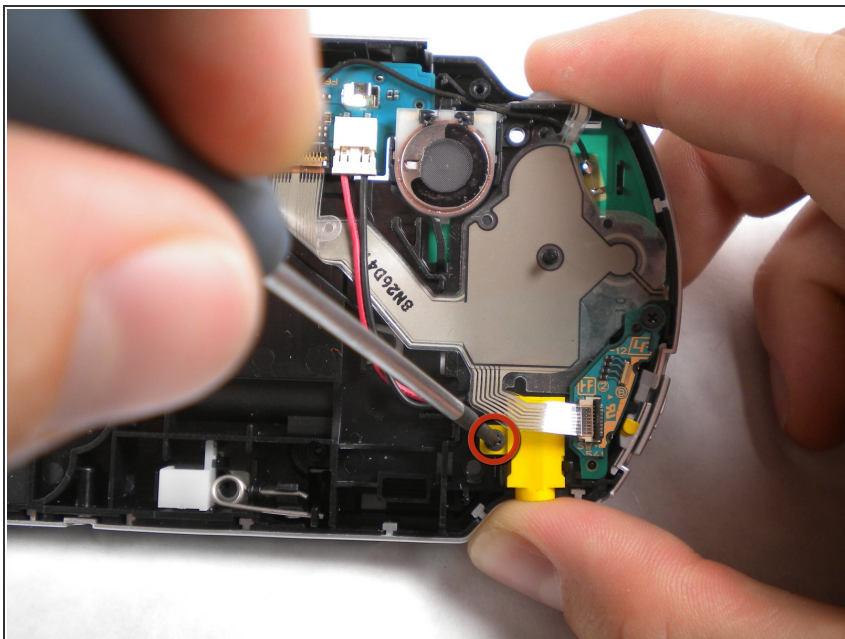
- After removing the LCD Screen, the Button Pad should be easy to remove.

Step 24 — Power Jack



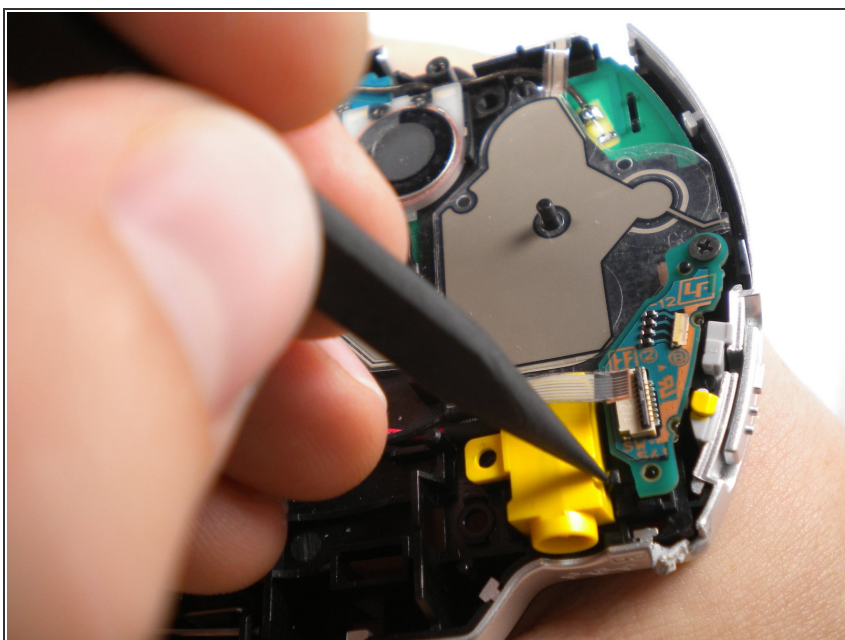
- Flip up the lock and detach the ribbon cable above the power jack.

Step 25



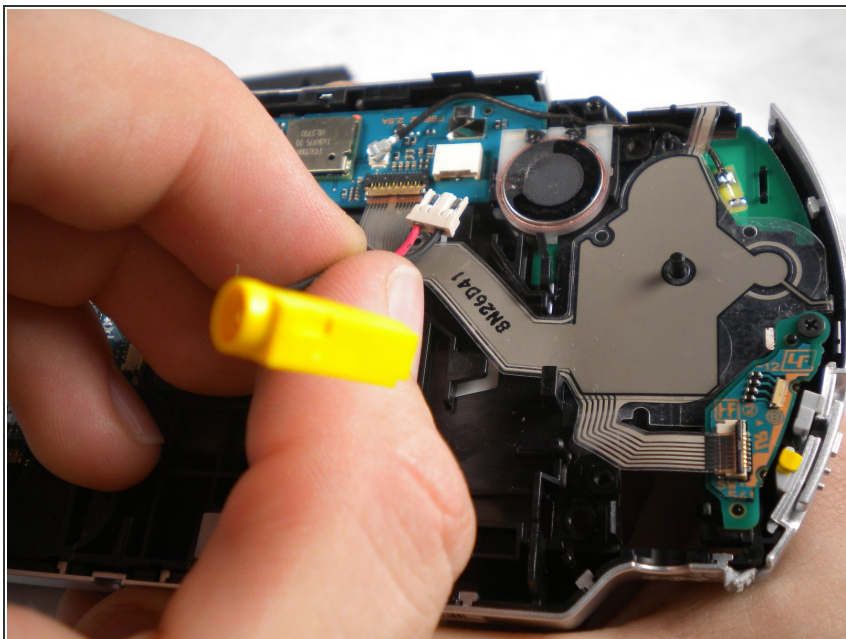
- Remove the screw from the power jack.

Step 26



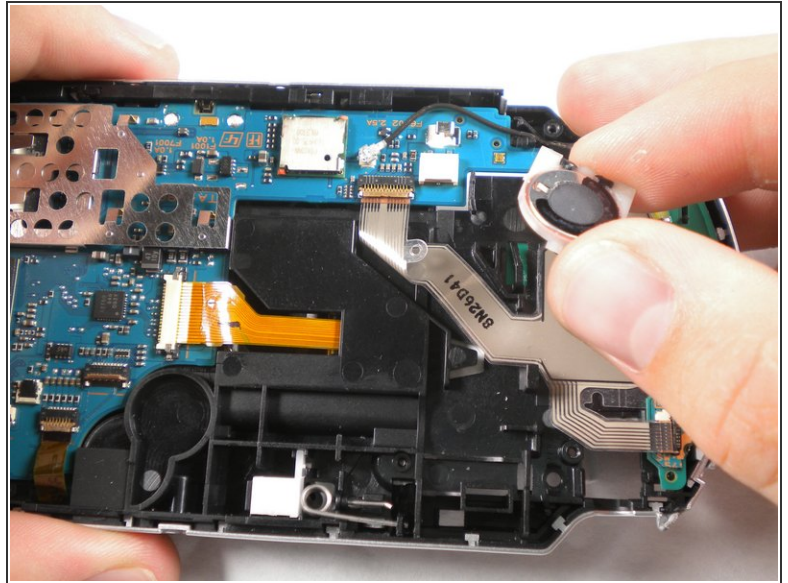
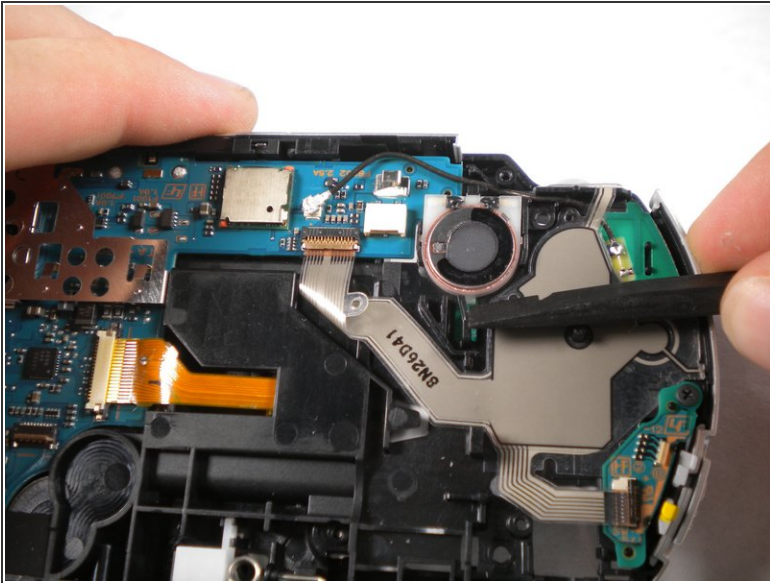
- Carefully bend back the black tab holding the power jack in place and start pulling the jack up to release it from this clip.

Step 27



- Pull the plug connecting the power jack to the motherboard.
- Remove the power jack.

Step 28 — Speaker

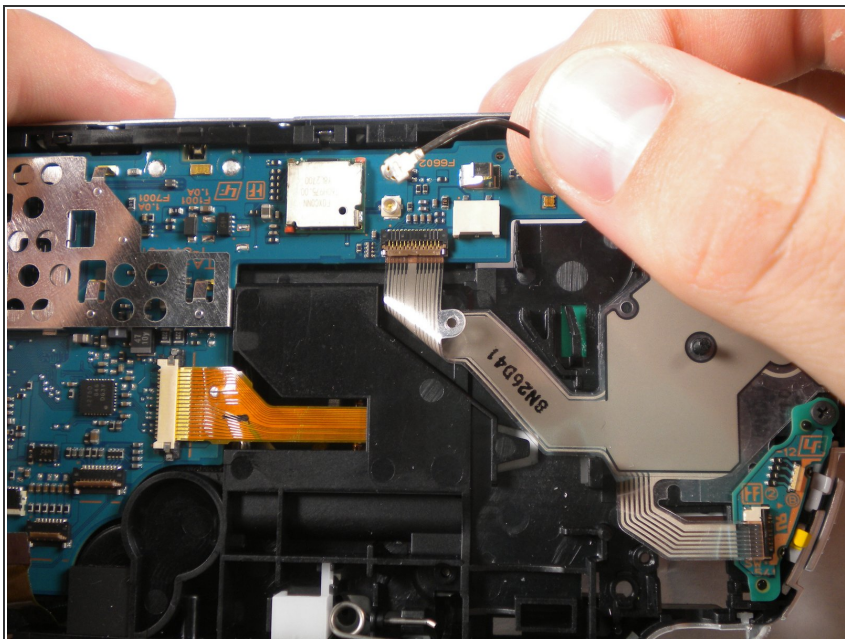


⚠ Push the black tab at the bottom of the speaker to pop the speaker out of place, and remove the speaker.

- The speaker is spring loaded, so be sure to keep an eye on it in case it starts doing flips into the air when you push the tab. Be careful not to lose or damage it!

☑ Make sure the new/replacement speaker does not spring out during reassembly.

Step 29 — Motherboard



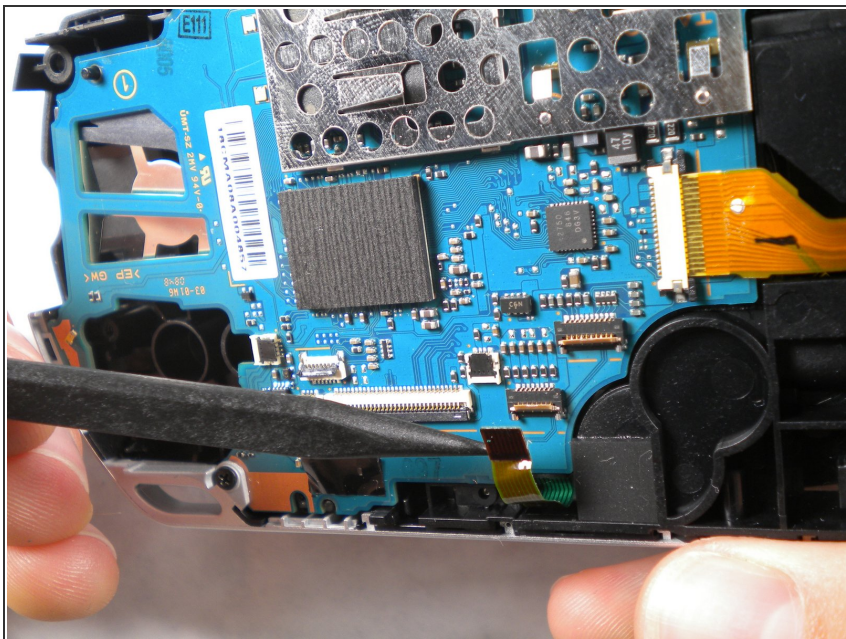
- Remove the cable carefully by lifting upwards from port attached to the motherboard .

Step 30



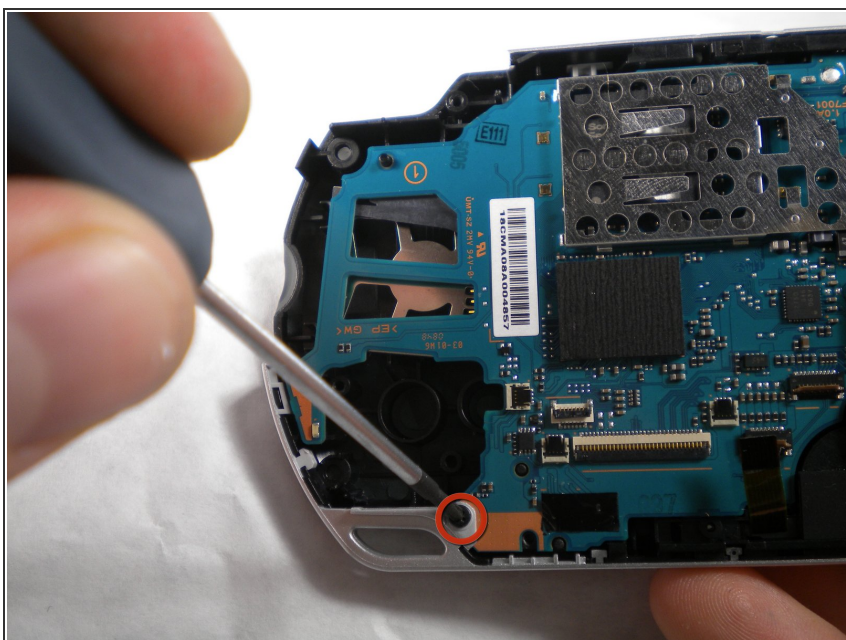
- Flip up both of the locks and remove both cables as shown

Step 31



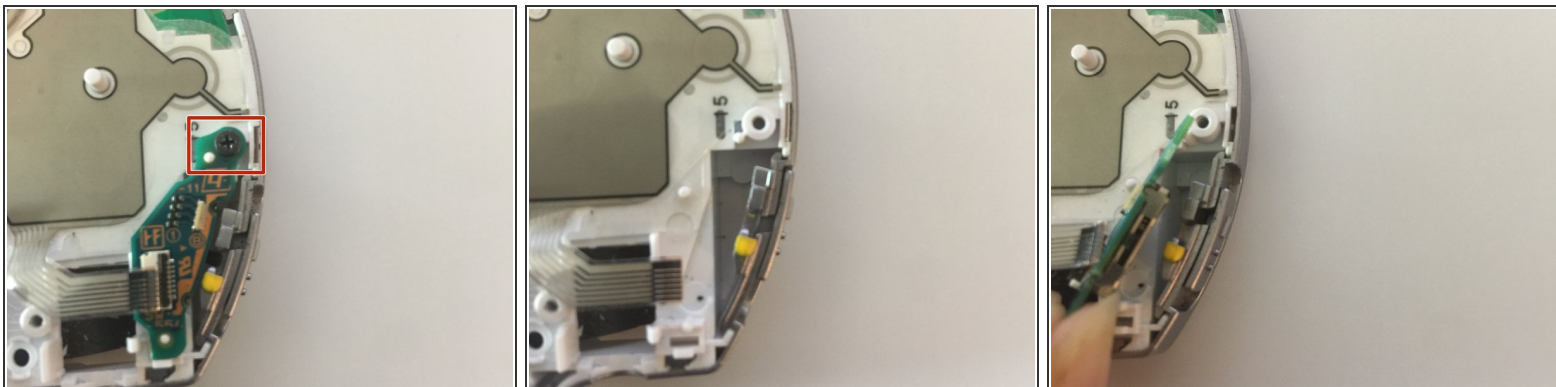
- Flip up the lock and remove the ribbon cable located at the bottom edge of the PSP.

Step 32



- Use a Phillips #00 screwdriver to remove the bottom left screw attached to the PSP

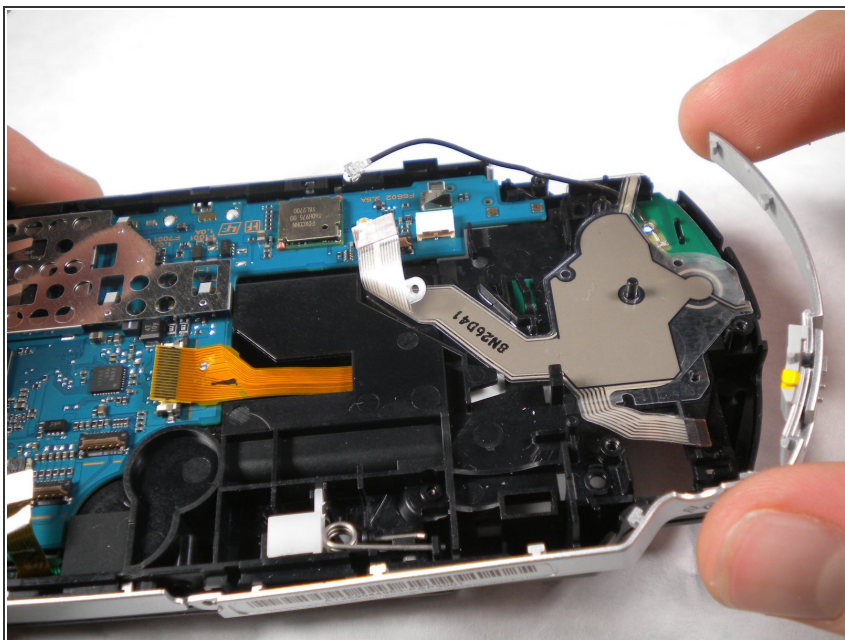
Step 33 — Remove Power Switch Panel



- Remove the screw located at the top of the power switch panel.

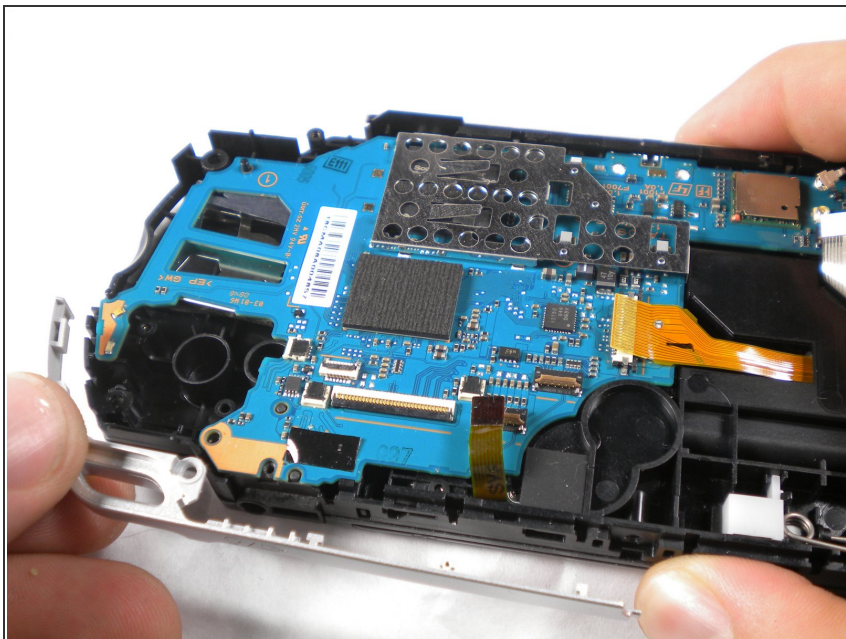
⚠ Gently lift and remove the panel from the switch side

Step 34



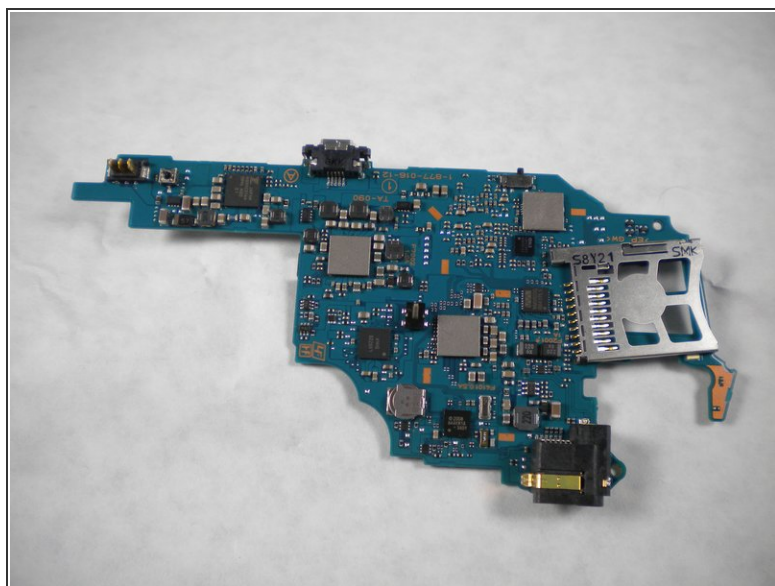
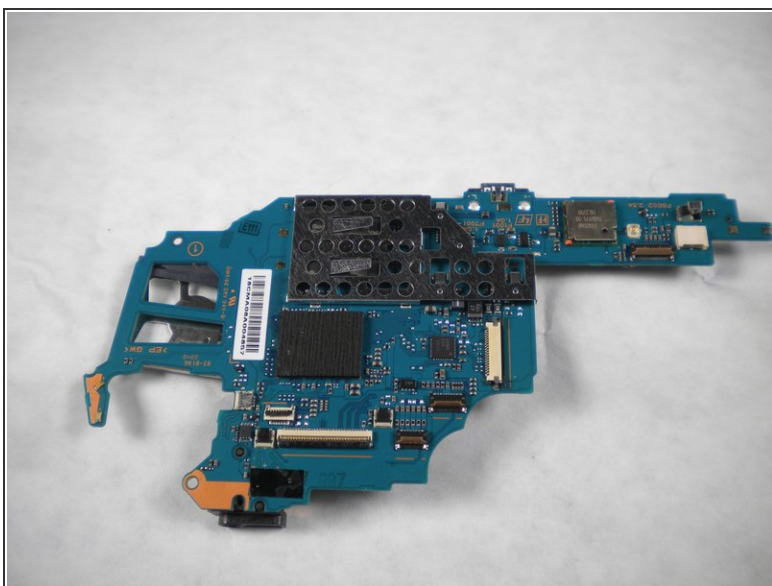
- Remove the silver rim on the right side of the PSP.

Step 35



- Remove the silver rim on the left side of the PSP.

Step 36



- Remove the motherboard from the PSP

To reassemble your device, follow these instructions in reverse order.