



HTC Inspire 4G Display Assembly Replacement

Replace a cracked front panel or a broken display on your HTC Inspire 4G.

Written By: Jeff Snyder



INTRODUCTION

This is not a pleasant repair. The device is full of adhesive. Removing the display assembly from front panel (or "mid chassis") can easily result in the destruction of the front panel bezel and digitizer. I suggest that you replace the entire digitizer, rather than one portion. If you want a beautiful front panel bezel, you will definitely need to replace that part, as well.



TOOLS:

- [T5 Torx Screwdriver](#) (1)
- [Phillips #00 Screwdriver](#) (1)
- [Spudger](#) (1)
- [iFixit Opening Tools](#) (1)
- [iFixit Opening Picks set of 6](#) (1)
- [Heat Gun](#) (1)
- [Metal Spudger](#) (1)
- [Tweezers](#) (1)

Step 1 — Display Assembly



- Remove battery cover using a plastic opening tool or finger nail.
- Slide opening tool to release clasps and remove battery cover.

Step 2



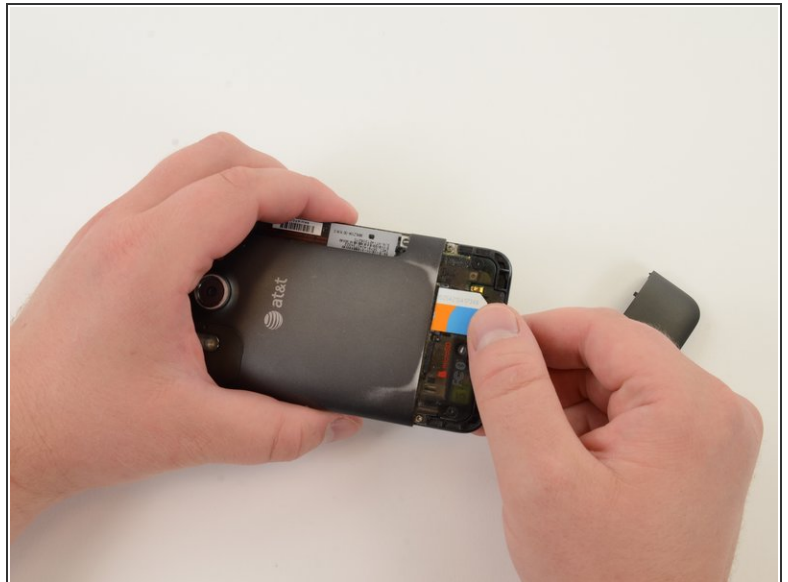
- With the cover removed, the battery will fall freely with a gentle shake.

Step 3



- Remove SIM card cover by simultaneously squeezing cover and pulling it off of the phone.

Step 4



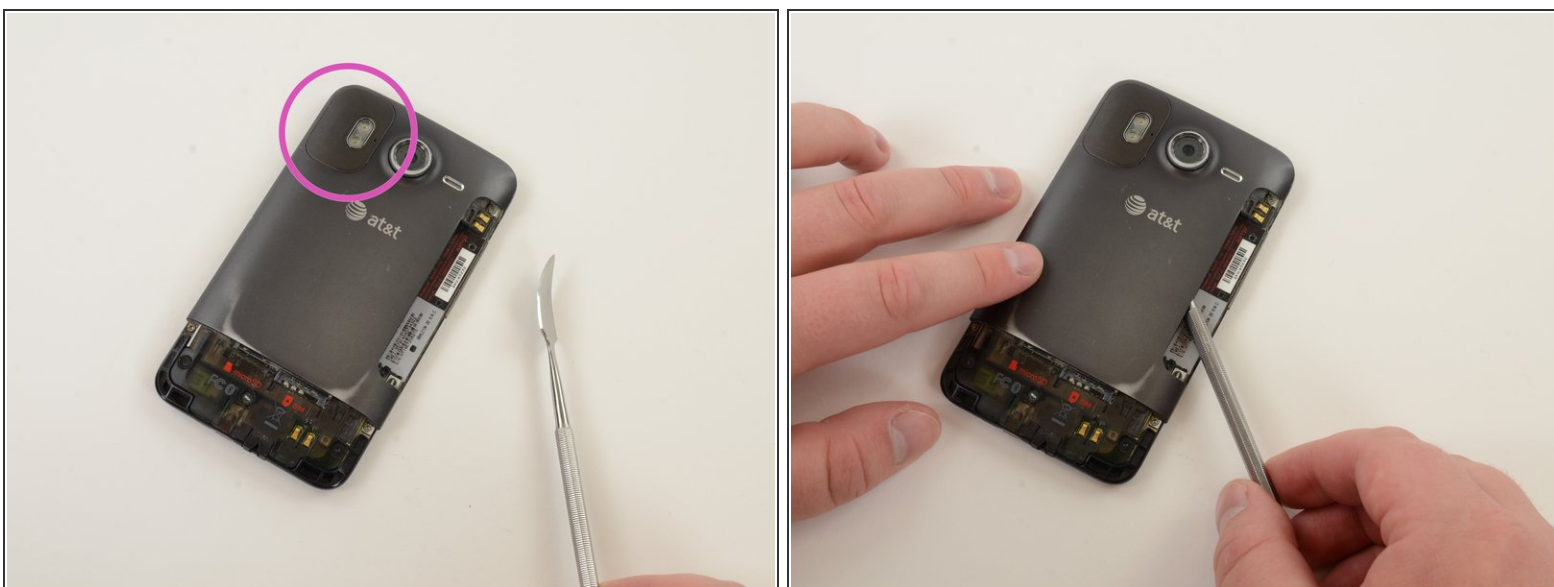
- Slide SIM card out.

Step 5



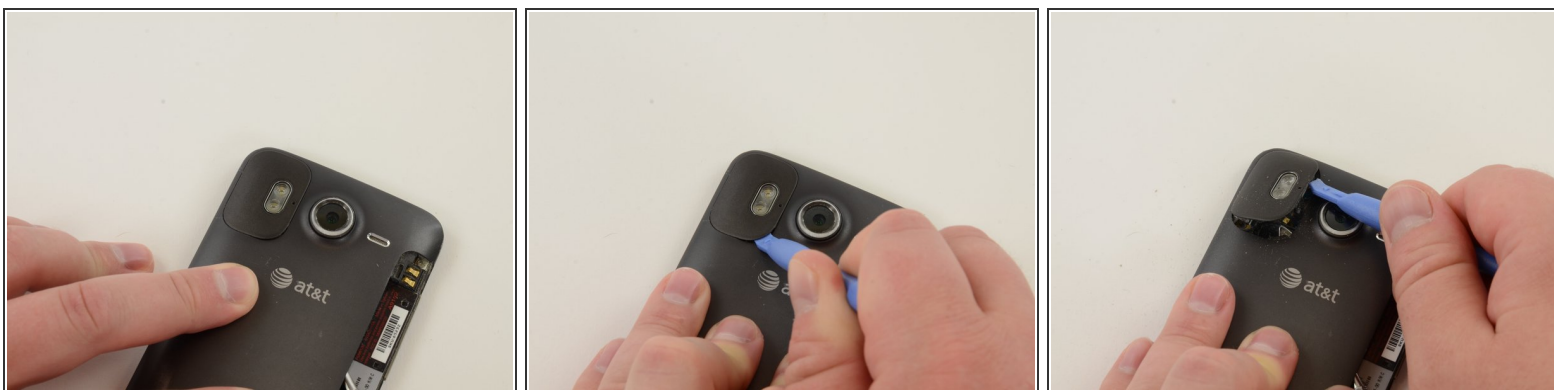
- Remove Micro SD card by pushing it in to the phone. Spring-loaded clasp will release the card.

Step 6



- Use a curved metal spudger to remove GPS cover.
- Probe underside of GPS cover until you can force a small opening between GPS cover and back cover of phone.

Step 7



- Insert plastic opening tool into gap between GPS cover and back cover of phone. Slide tool along GPS cover and pry the piece off.

Step 8



- Remove "VOID" sticker from screw.

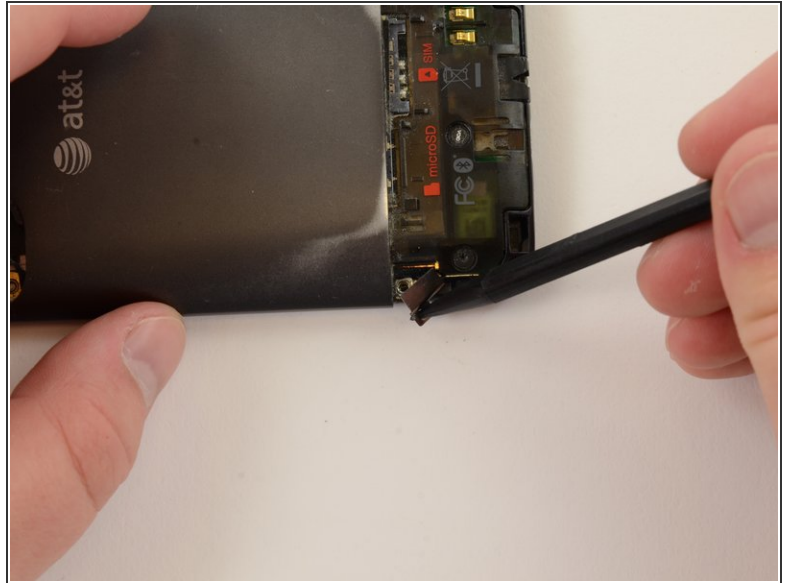
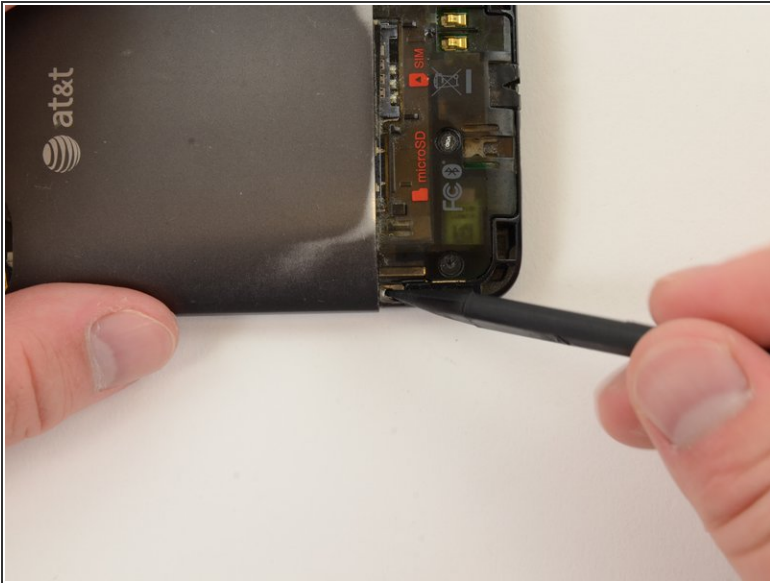
⚠ If your phone has a warranty, removing "VOID" sticker will void your warranty.

Step 9




- Remove four 2.2mm T5 torx screws.
- Remove one 4.5mm T5 torx screw.

Step 10



- Remove display cable shield.
- Insert probing tool into screw hole and pull shield.

 Be careful! This piece is made of thin, springy metal and will fly across the room if you remove it too forcefully.

Step 11




- Peel off manufacturer's information sticker.

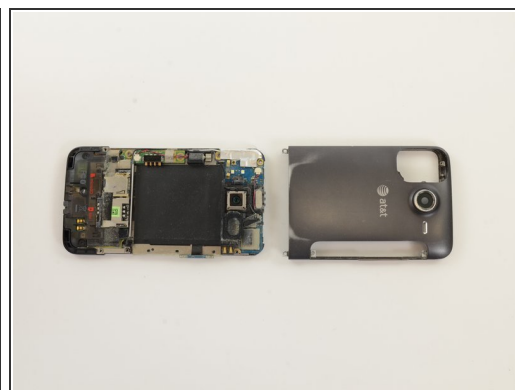
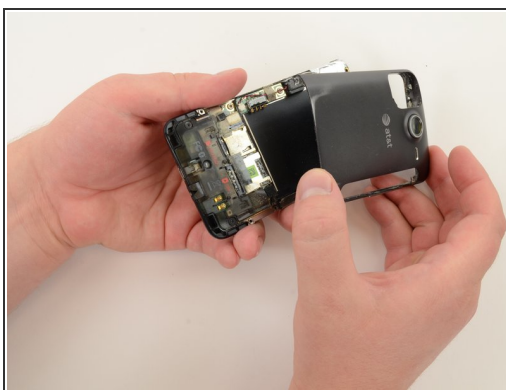
Step 12



- Lift volume button assembly out of the back case.

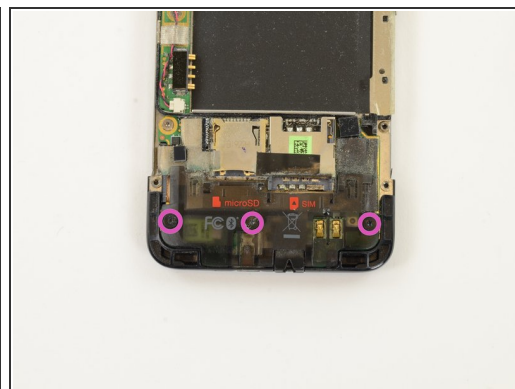
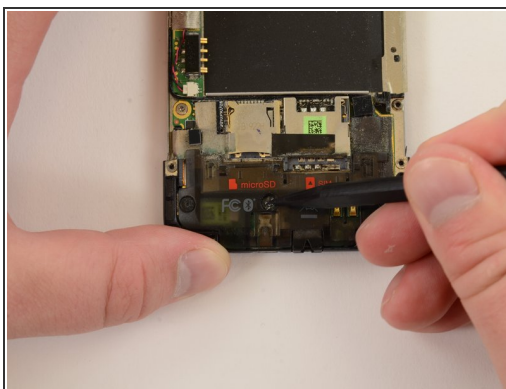
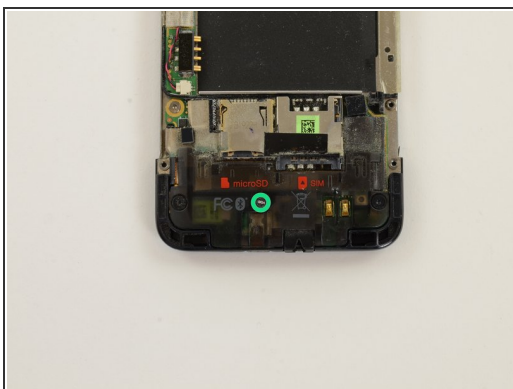
 **Work slowly!** Initially, you must lever the assembly from the ribbon cable attaching it to the upper logic board. The cable is delicate.

Step 13



- Push up on the back cover, wiggling cover back and forth, until it slides off.

Step 14

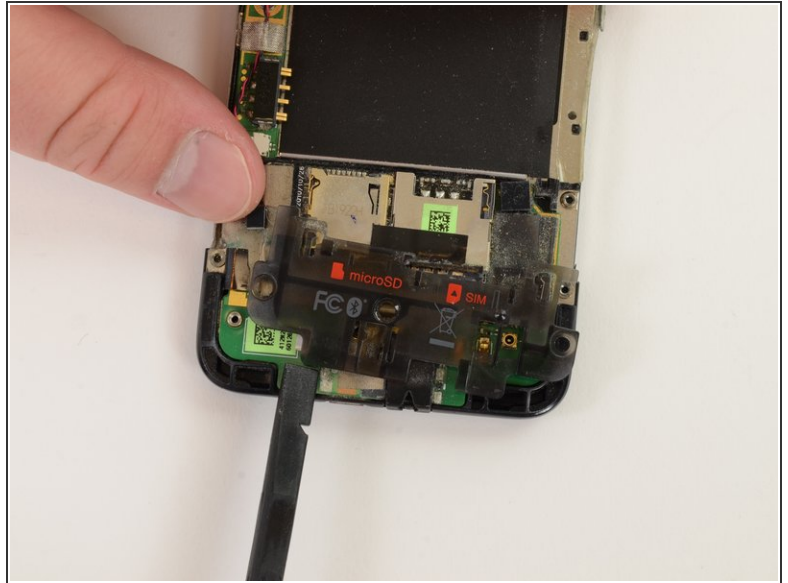
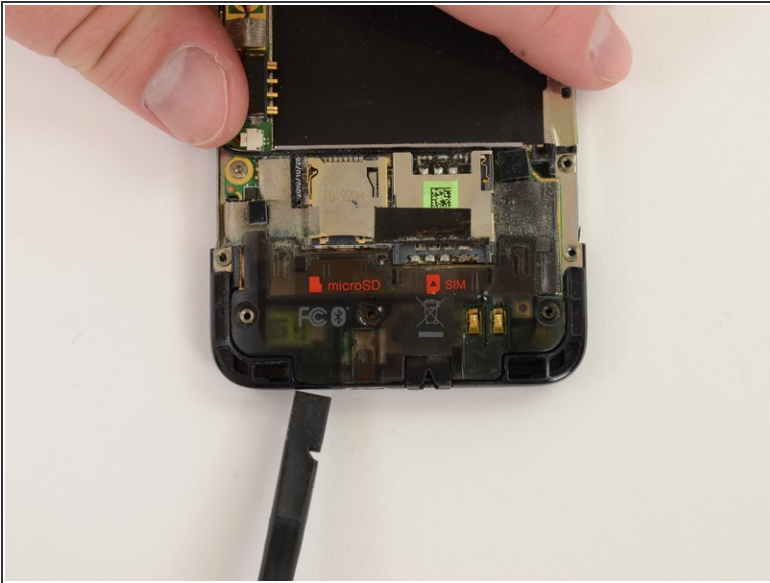


- Remove "VOID" sticker.

⚠ If your phone has a warranty, removing the "VOID" sticker will void your warranty.

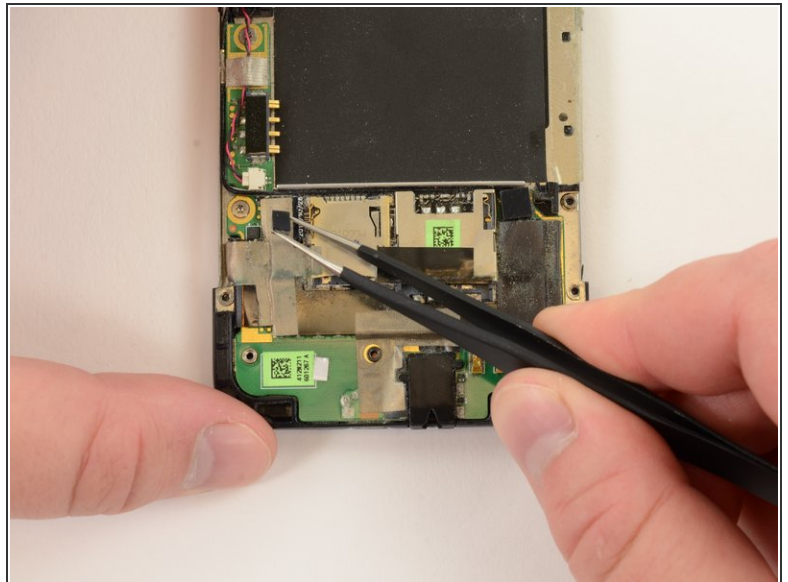
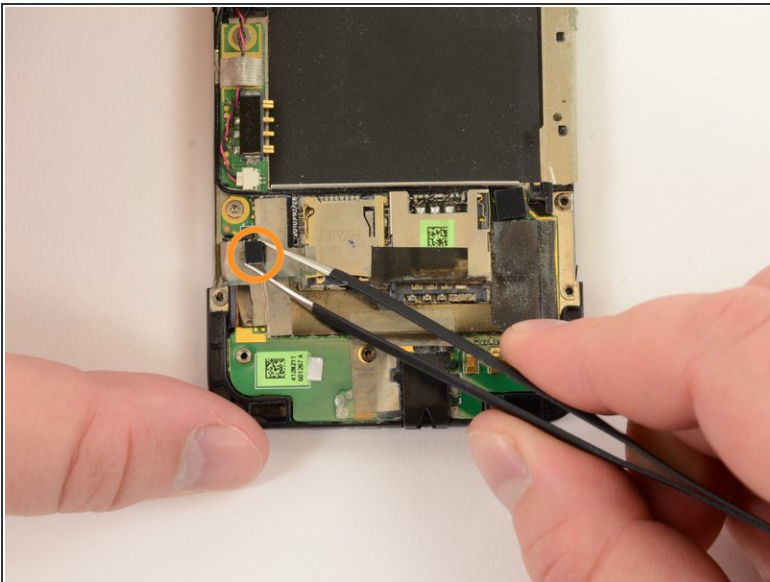
- Remove three 2.4mm T5 torx screws.

Step 15



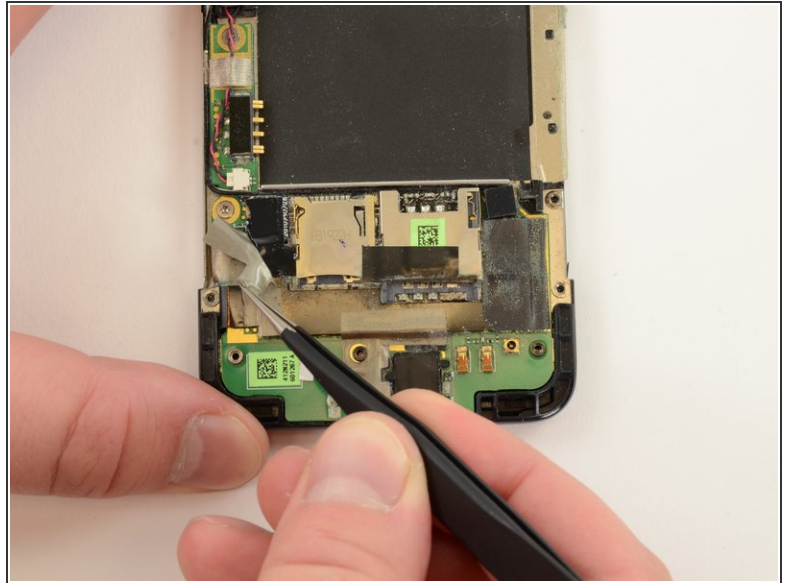
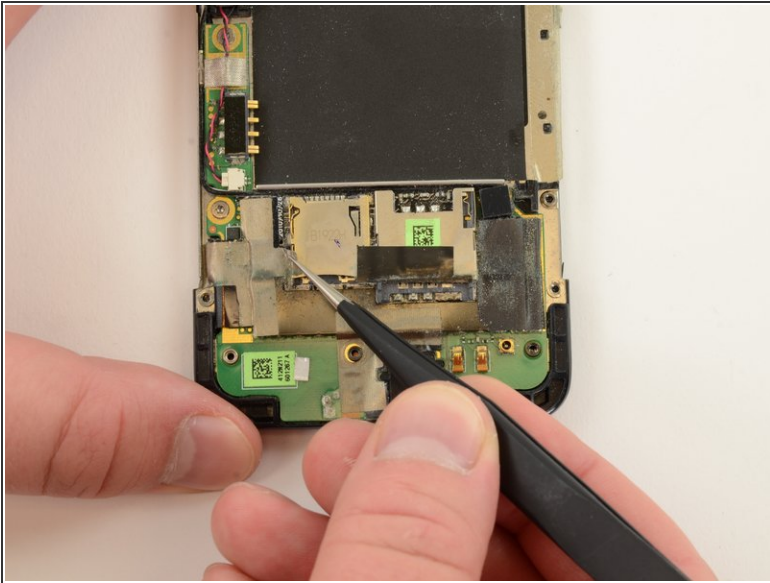
- Apply pressure to the bottom of the plastic logic board shield and it will pop right off.

Step 16



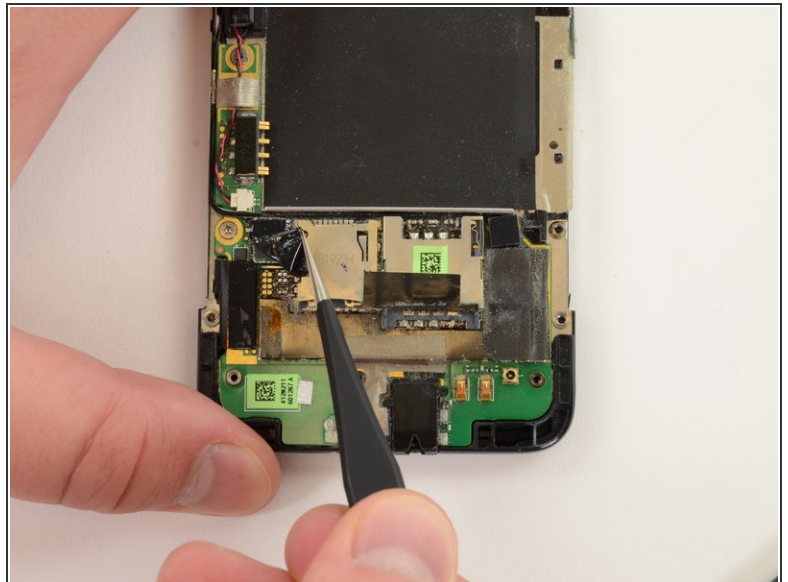
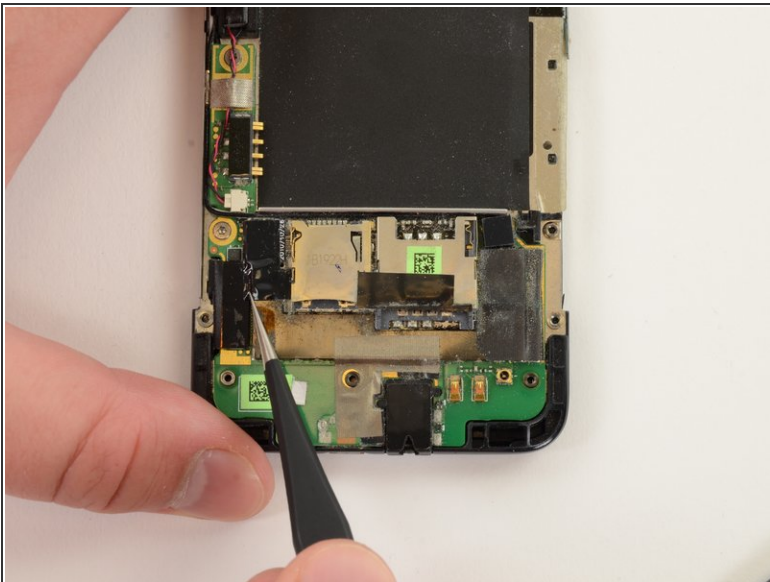
- Remove rubber spacer.

Step 17



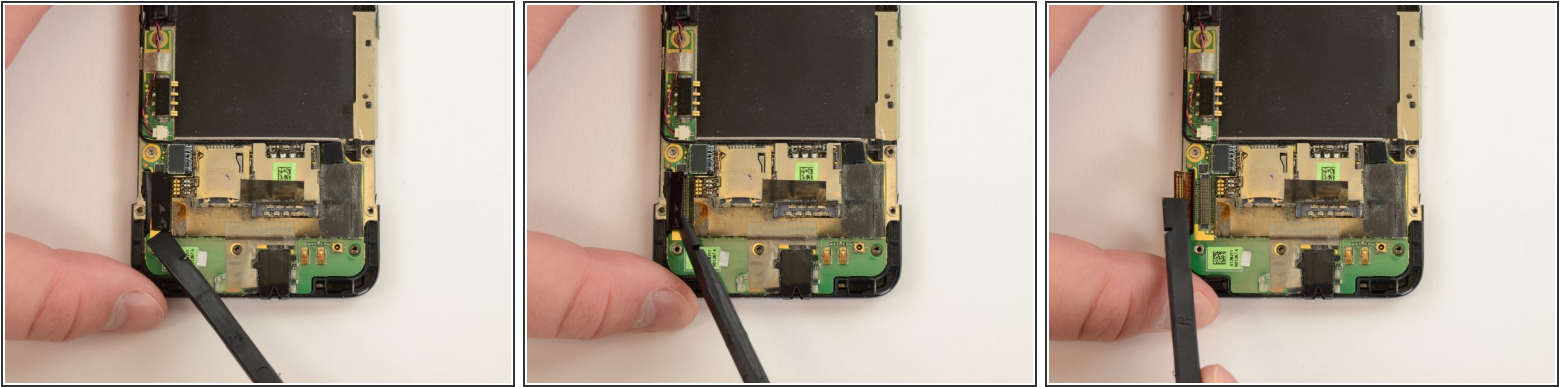
- Peel off Mylar tape.

Step 18



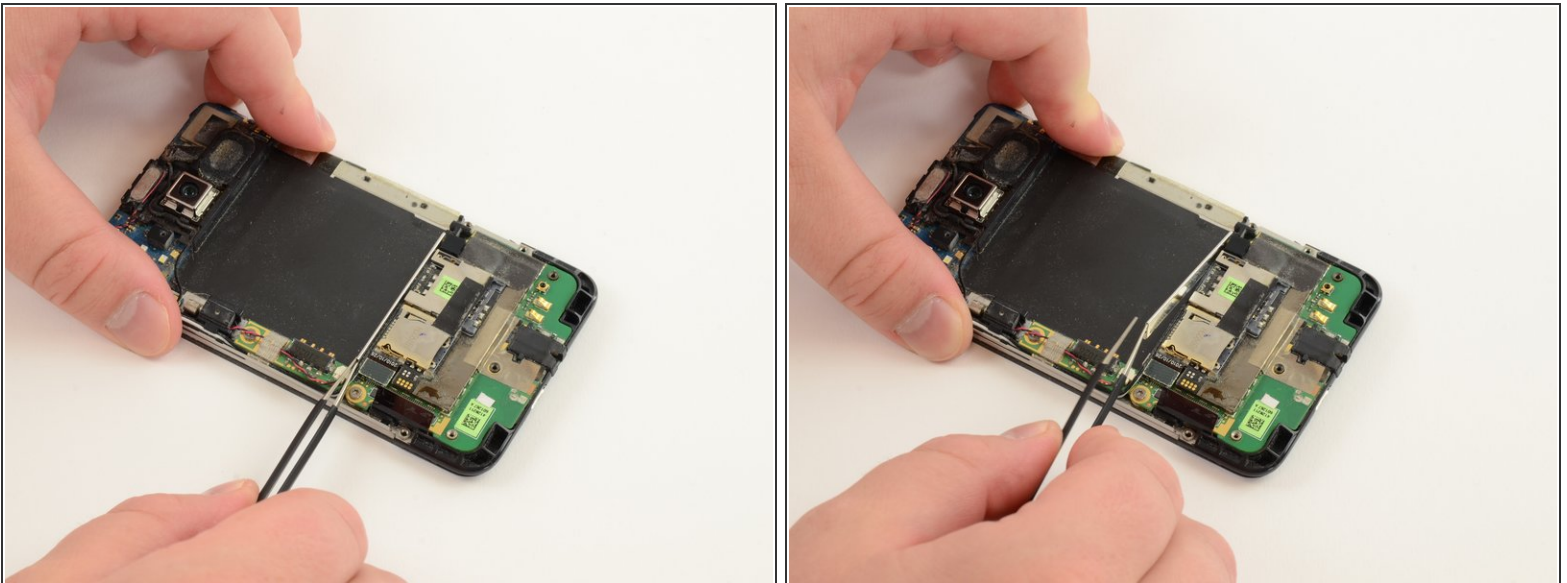
- Peel off electrical tape.

Step 19



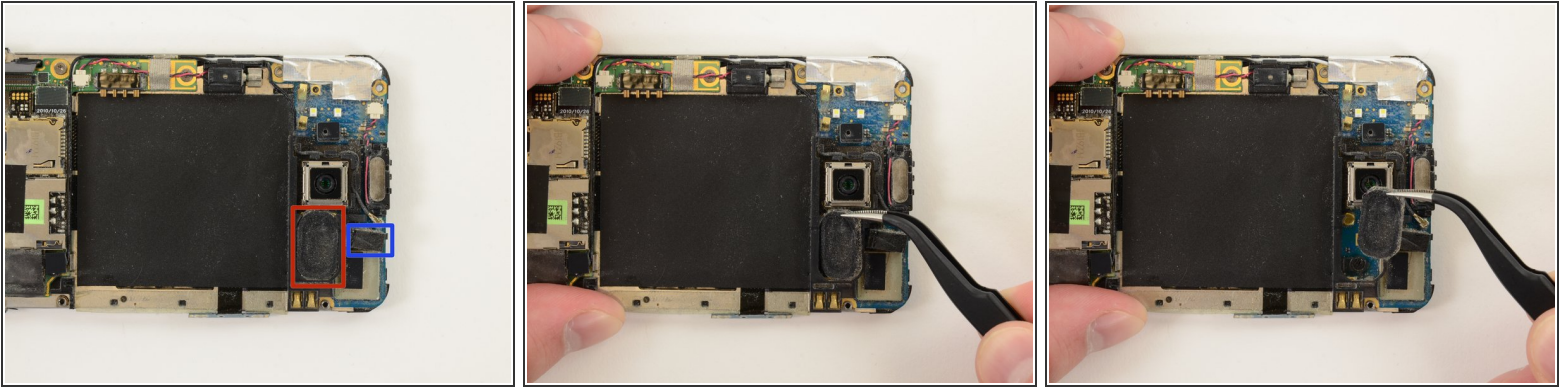
- Pry display assembly connector off of lower logic board.

Step 20



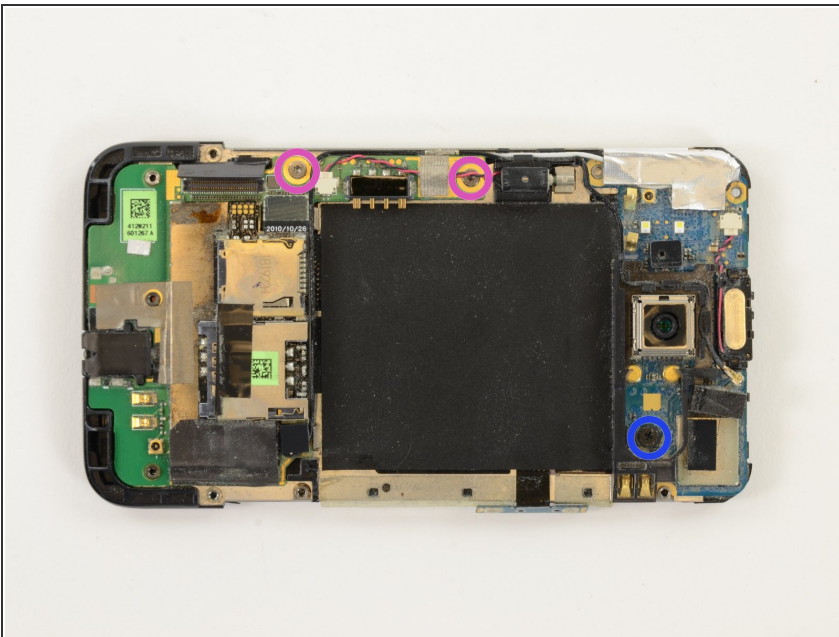
- Remove metal bracket.

Step 21



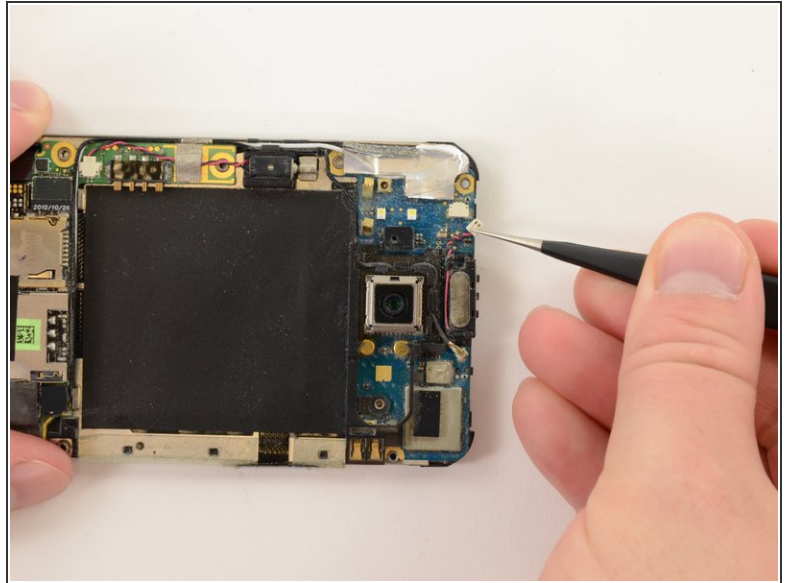
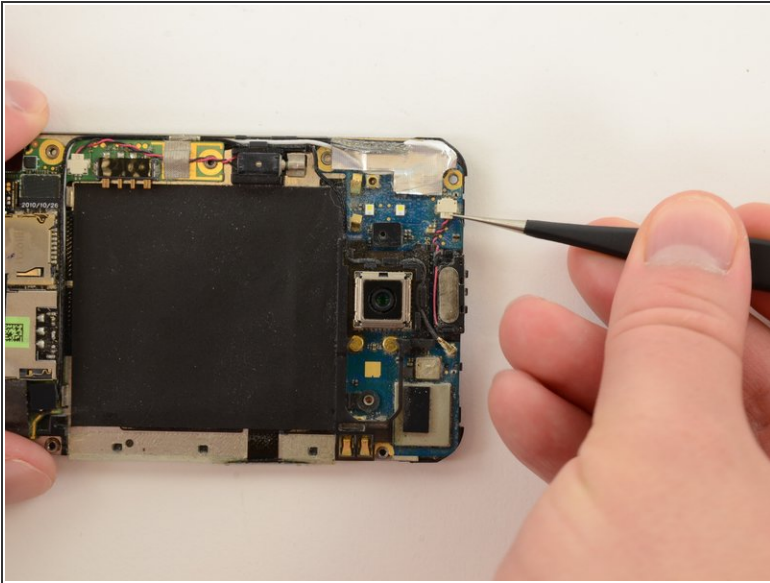
- Remove speaker.
- ⚠ During reassembly, be careful with the spring connectors on the reverse side of the speaker unit. They are bent easily.
- This rubber spacer is held on by a weak adhesive. Be careful with this during reassembly, as it may catch and crumple as you put the back panel back the phone.

Step 22



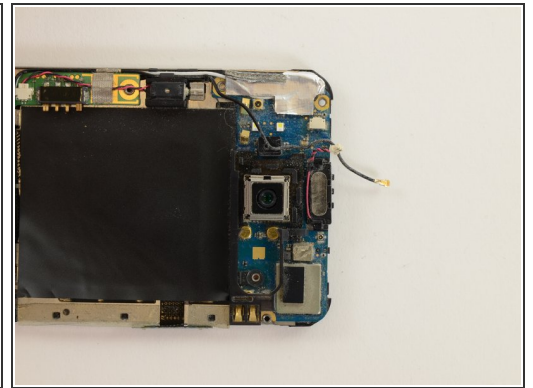
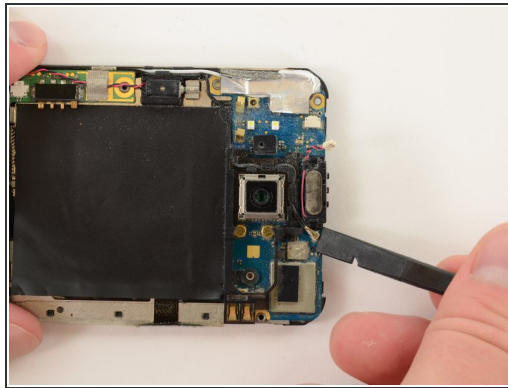
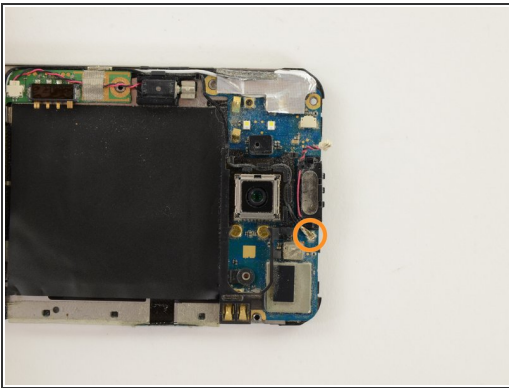
- Remove one 1.5mm #00 Phillips screw.
- Remove two 2.5mm T5 torx screws.

Step 23



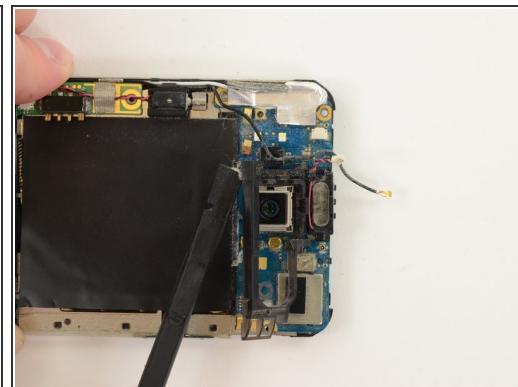
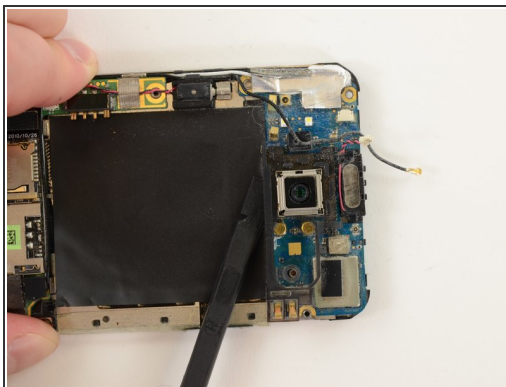
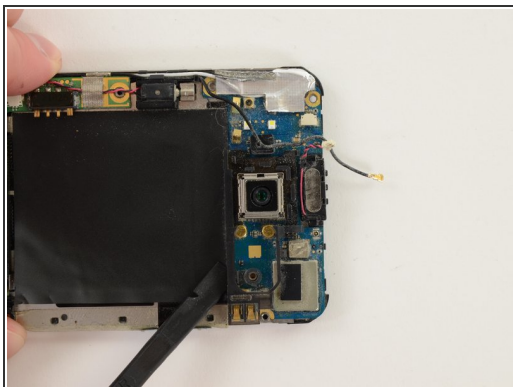
- Remove earpiece speaker connector.

Step 24



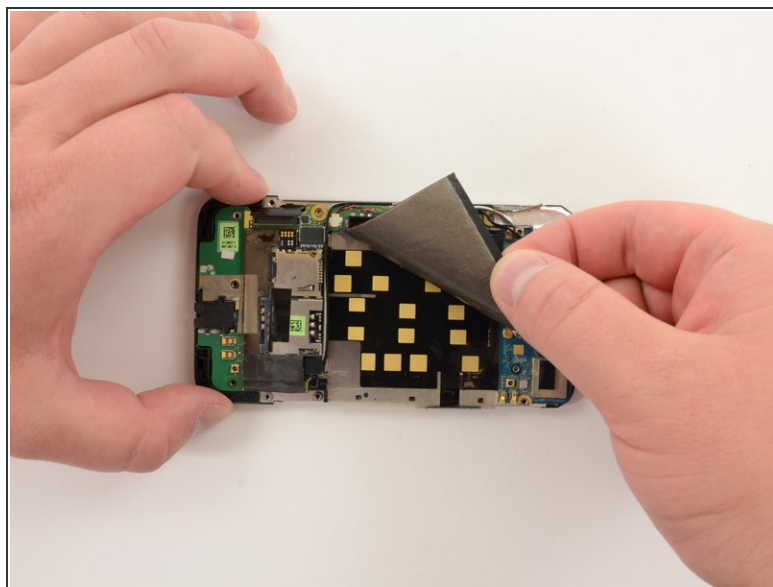
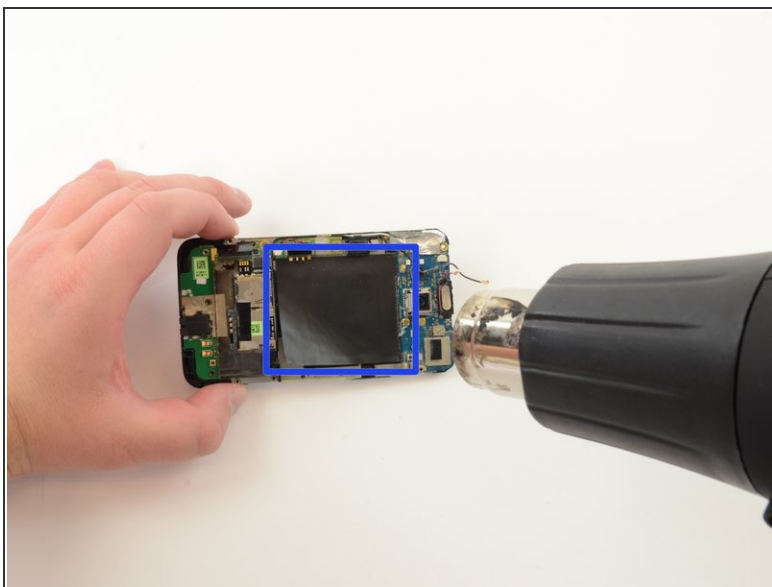
- Pry off Bluetooth coaxial cable connector.
- Unwind Bluetooth coaxial cable from plastic camera shield.

Step 25



- Pry off plastic camera shield.

Step 26

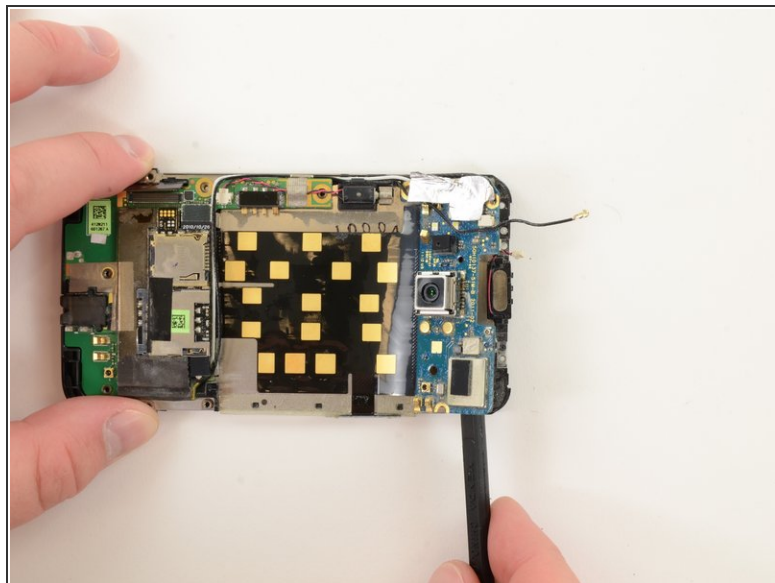
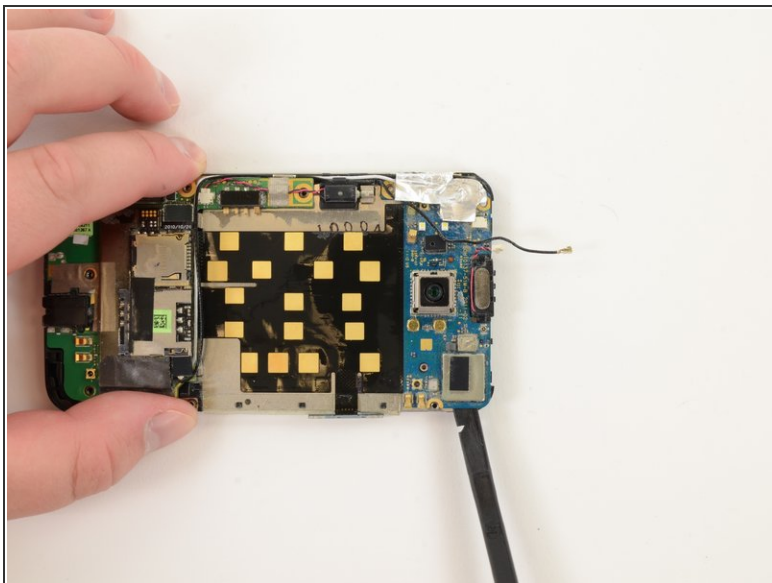


- Heat black Mylar shield for easier removal.

i As you can see, we attempted to peel off the Mylar shield before heating it. It required more force than we were comfortable with, so we turned up the heat!

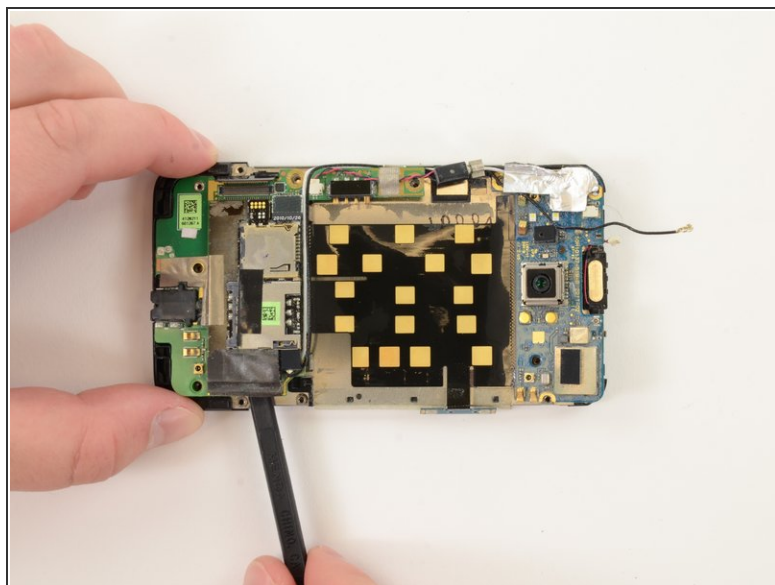
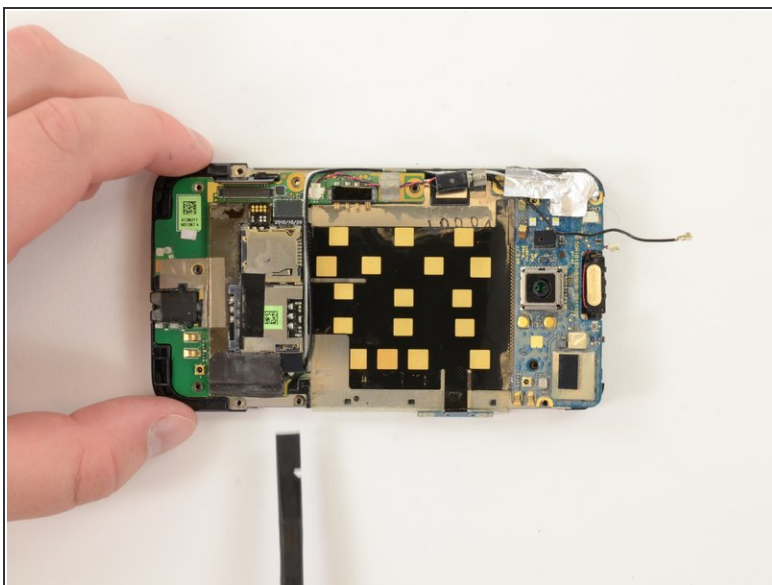
- Peel off Mylar shield.

Step 27



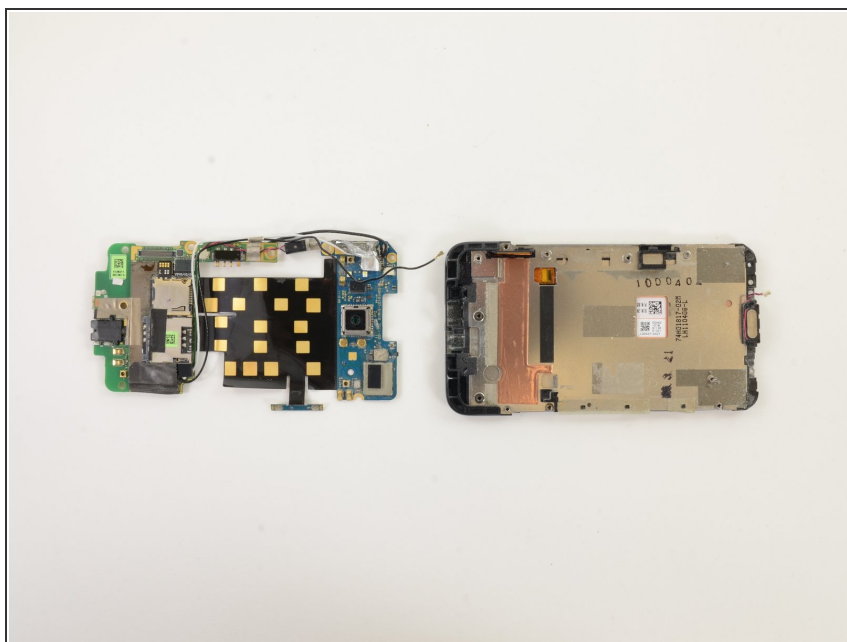
- Gently separate upper logic board from mid chassis. The upper logic board is held to the mid chassis by copious amounts of strong adhesive.

Step 28



- Gently separate lower logic board from mid chassis. The lower logic board is held to the mid chassis by copious amounts of strong adhesive.

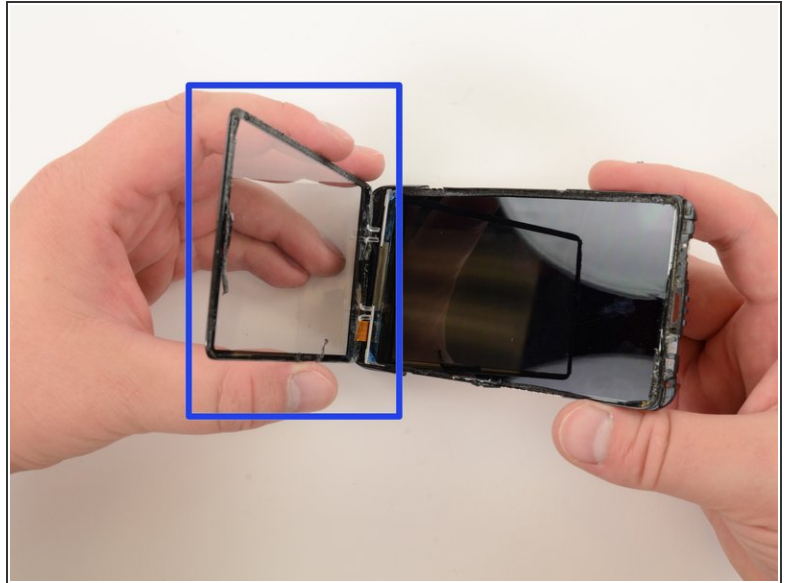
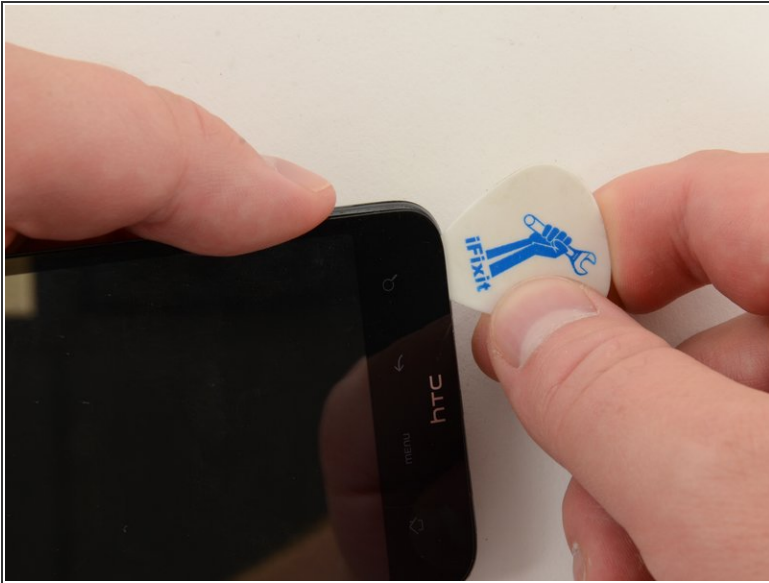
Step 29



- Once the adhesive-laden logic boards are separated from the mid chassis, the entire assembly easily comes off.

⚠ Be careful when handling the logic board assembly. We could have separated out each part, but decided it was a waste of time. The cost of cutting this corner is extra care when handling the logic board assembly.

Step 30



- Blast the front panel with heat and pry between the display assembly and front panel bezel, working one or several guitar picks around the display assembly.
- Once the display assembly is loosened from the front panel, it will fall away.
- The front glass came off easily, but the digitizer was much more difficult to remove. The adhesive holding together the display assembly is much weaker than the adhesive holding the display assembly to the front panel.
- ⓘ While creating this guide, I utterly destroyed the front panel bezel and digitizer. Replacing the display assembly was a breeze--but removing the digitizer required nearly a dozen reheats of the front panel. To replace the bezel, you will need a new "mid chassis" (that's the front panel piece the digitizer is so powerfully glued to).

To reassemble your device, follow these instructions in reverse order.