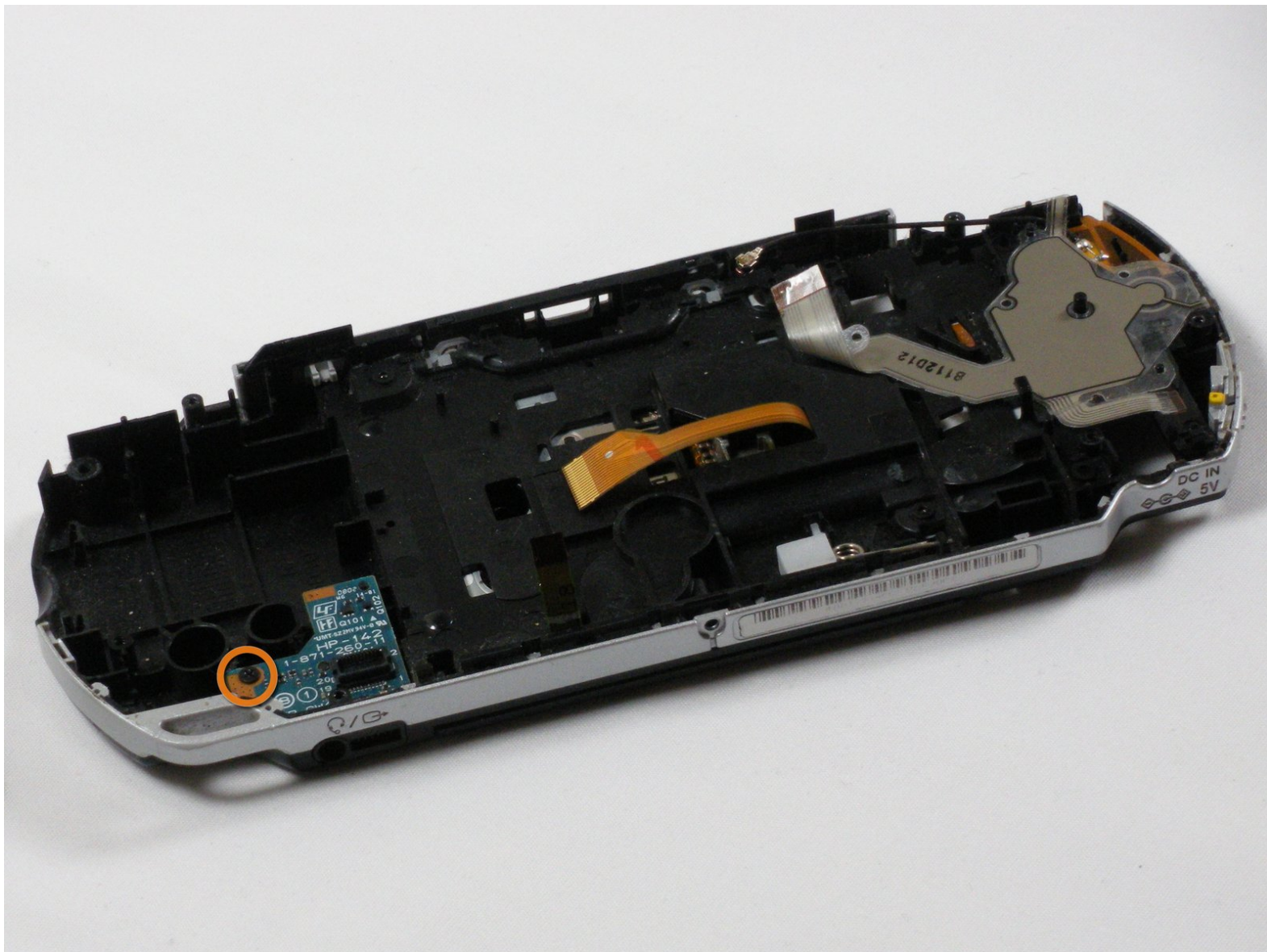




PSP 2000 Audio Jack Replacement

Written By: espinks



INTRODUCTION

Do your earphones only work as earmuffs? You may need to replace your PSP's audio jack.



TOOLS:

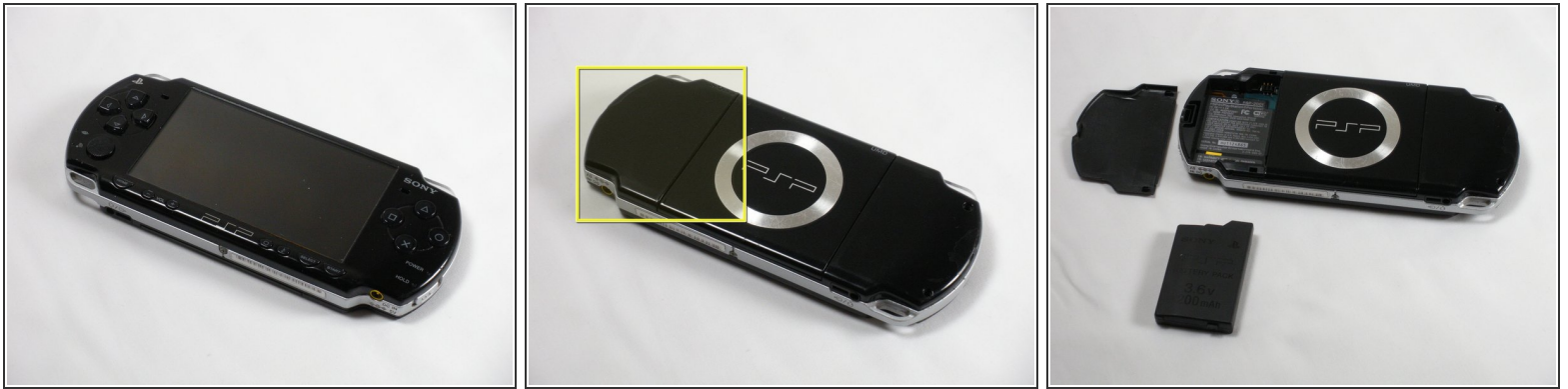
- [Phillips #00 Screwdriver](#) (1)
- [iFixit Opening Tool](#) (1)



PARTS:

- [Sony PSP 2000 Headphone Jack](#) (1)

Step 1 — Battery



- Place PSP face down, so that the UMD Drive is facing upwards.
- Locate the battery door and open.
- Remove the battery from inside.

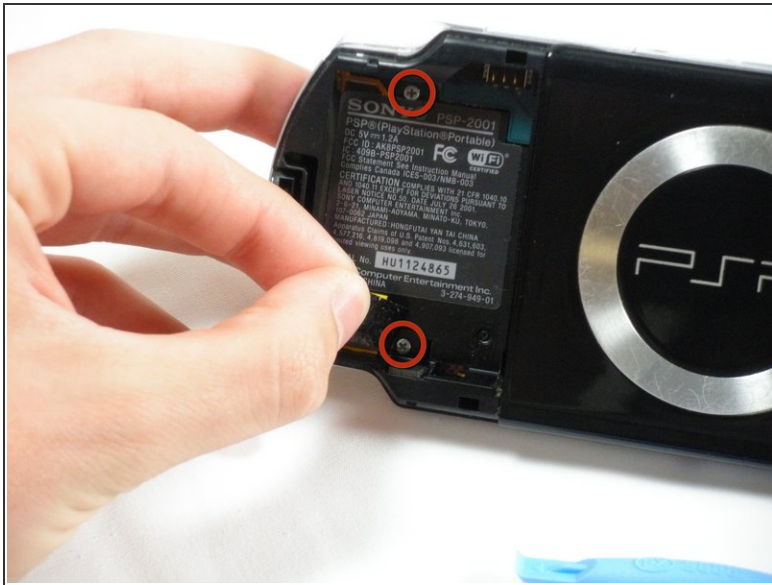
Step 2 — Front Casing



⚠ This step requires the removal of the warranty sticker. **Removing the sticker will void the warranty.** According to the FTC removing this will not void your warranty.

- Locate the sticker in the battery compartment labeled: *"En: Warranty Void if Seal Damaged."*
- Remove the sticker using the PSP Opening Tools.
- ⓘ Under the sticker is a 5mm Phillips screw needed in the next step.

Step 3



- Remove four 5 mm Phillips from the case.
- ⓘ If the screws stick in the case, you can use a magnetized screwdriver to draw them out.

Step 4



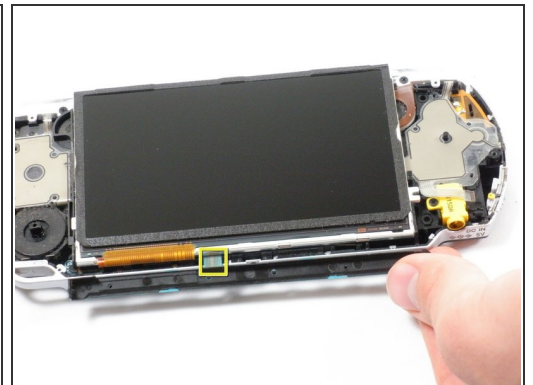
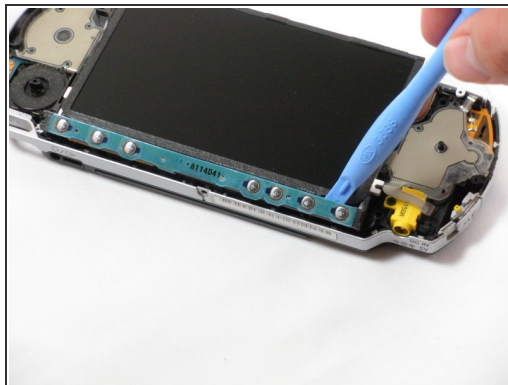
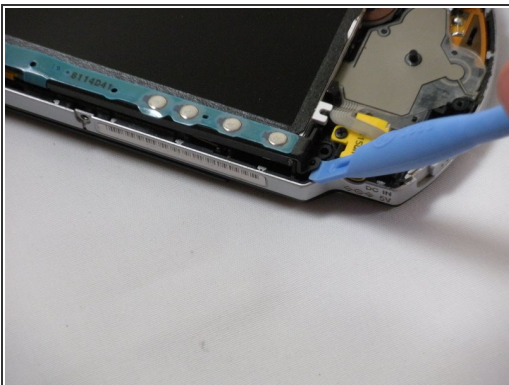
- Remove the following screws from around the bezel:
 - Two 4 mm Phillips
 - One 5 mm Phillips
- ☑ The two shorter 4 mm screws are on the top of the PSP; the longer 5 mm screw is on the bottom.

Step 5



- Gently pry the front bezel away from the casing using a PSP opening tool.
- Start on the right hand side of the PSP bezel, and carefully work the tool around the side.
- ⓘ If you want to clean the control buttons or D-pad, you can easily pop them out once the faceplate is off and wipe them clean.

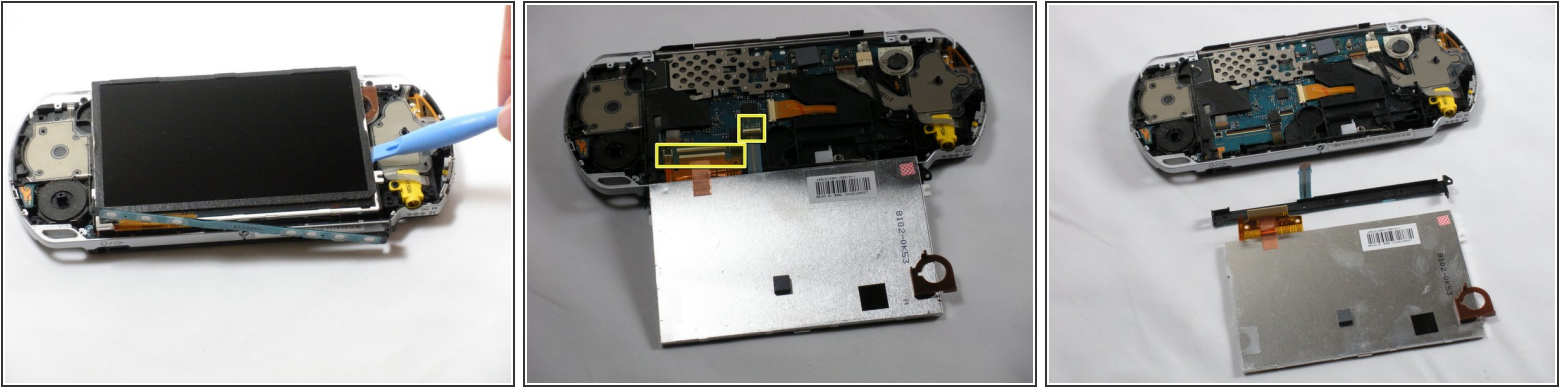
Step 6 — Display



- Remove the home bar by gently prying on the left and right sides of it with the opening tools. Lift the bar out of the device.

⚠ A ribbon cable connects the home bar to the logic board. Be careful not to damage the cable when removing the bar.

Step 7

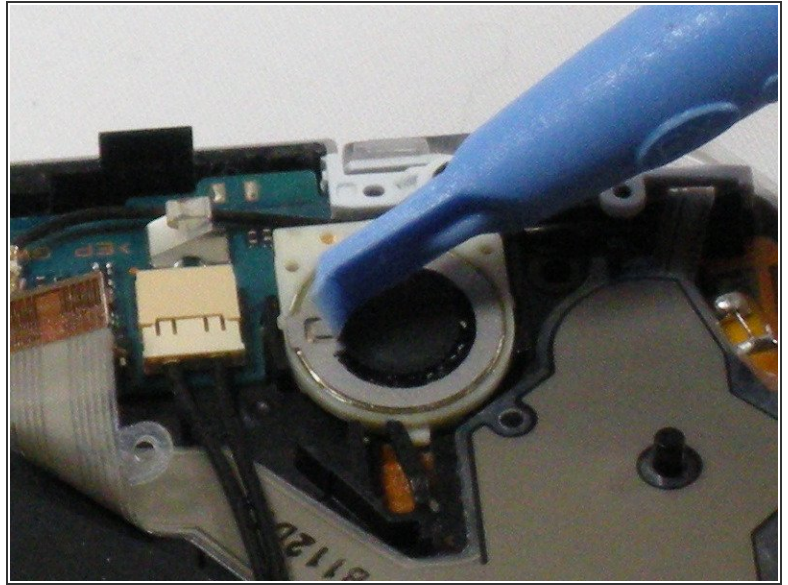
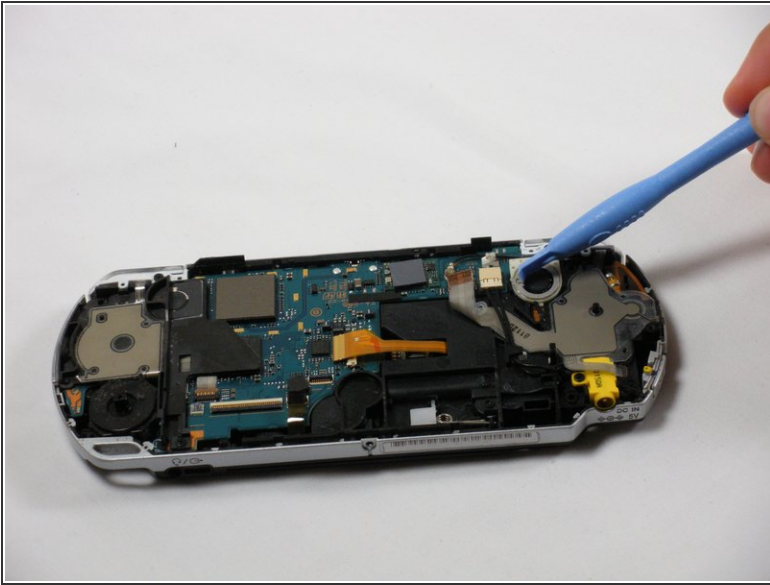


- With the home bar out of the way, gently pry up the display using the opening tools.

⚠ There is another ribbon cable attached to the bottom of the LCD. Be careful not to damage either of the connectors when removing.

- Lift the black tabs of the ribbon cable connectors using a opening tool. Pull the ribbons out towards the bottom of the PSP to disconnect.
- Gently lift out the display.

Step 8 — Speaker

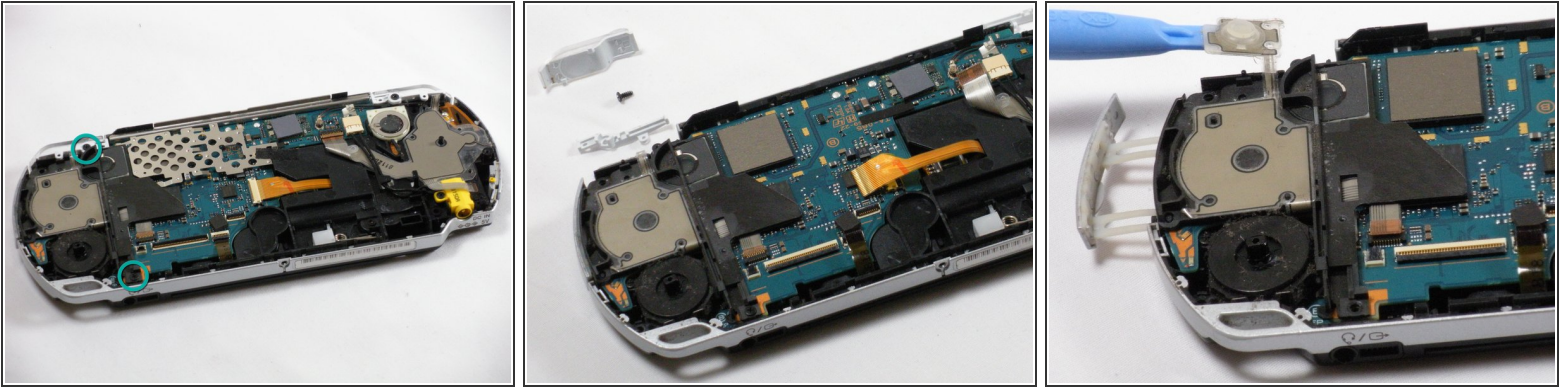


- Use the opening tools to press the tab on the left-hand side of the speaker to release it.

⚠ Be careful not to puncture the speaker in the process.

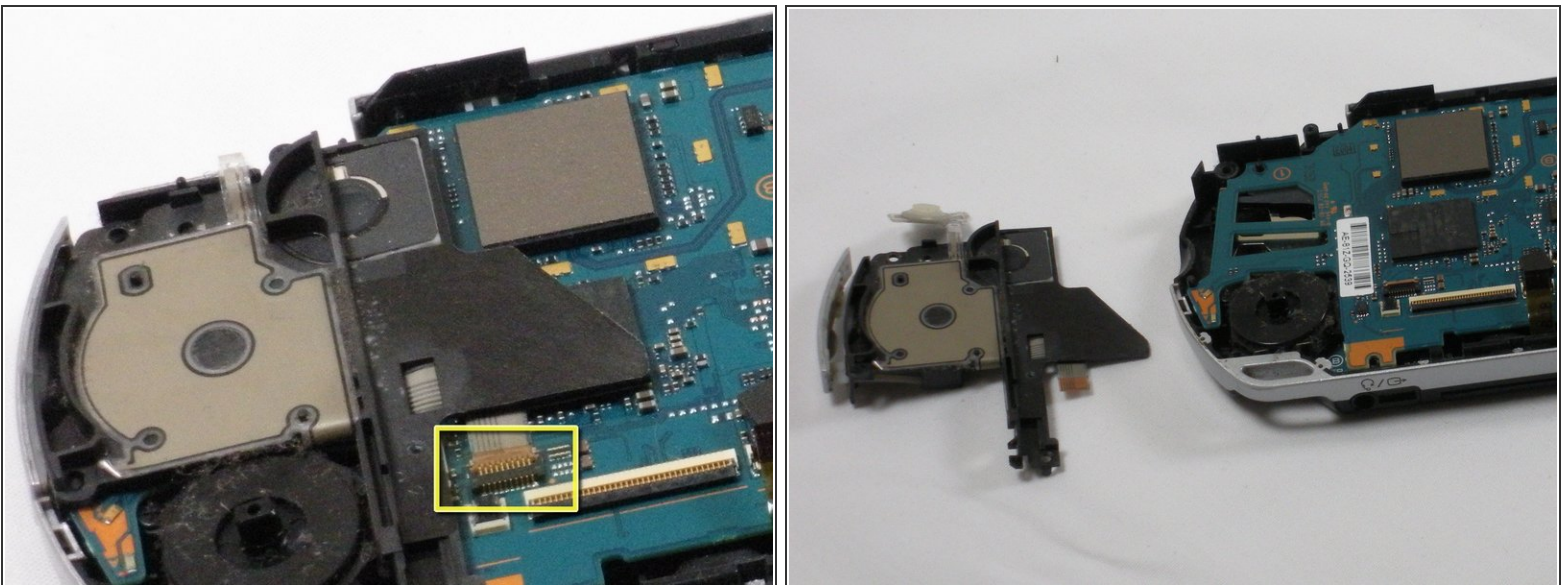
- Remove the speaker by twisting it counter-clockwise (to the left, like a screw).

Step 9 — Memory Stick Slot



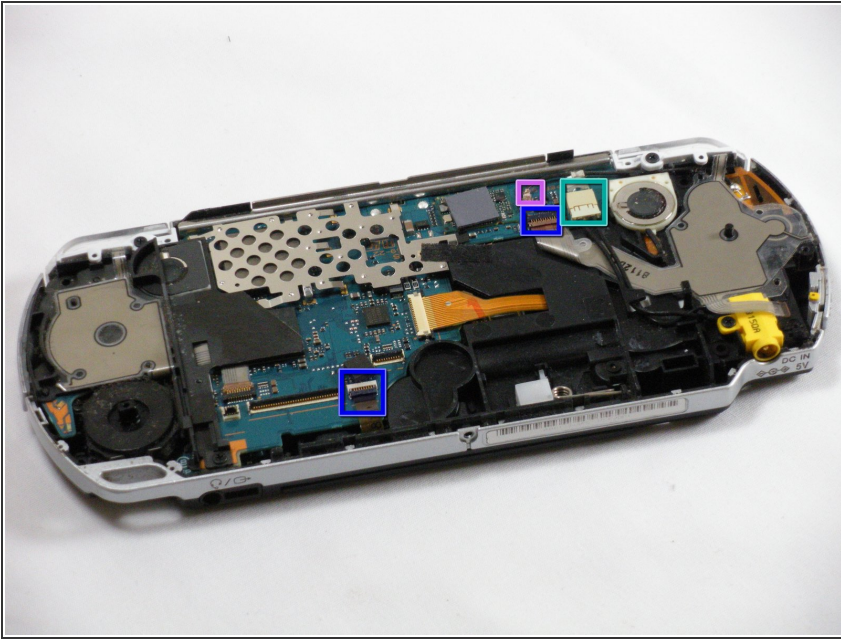
- Remove two 4.5 mm Phillips screws from the left-hand side of the PSP.
 - Slide off the left trigger along with the plastic bracket underneath.
 - Carefully pry off left trigger button using opening tools.
- i** The button is adhered to the body. It can be re-adhered with hot glue after being pried-up, if necessary.

Step 10



- Use an opening tool to lift up the brown tab on the connector and remove the cable horizontally.
- Gently remove the memory card slot by pulling it straight out.

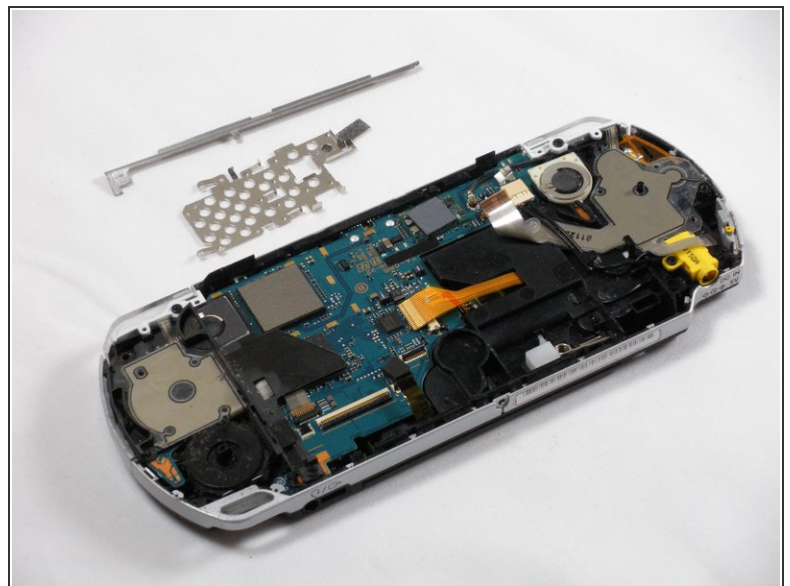
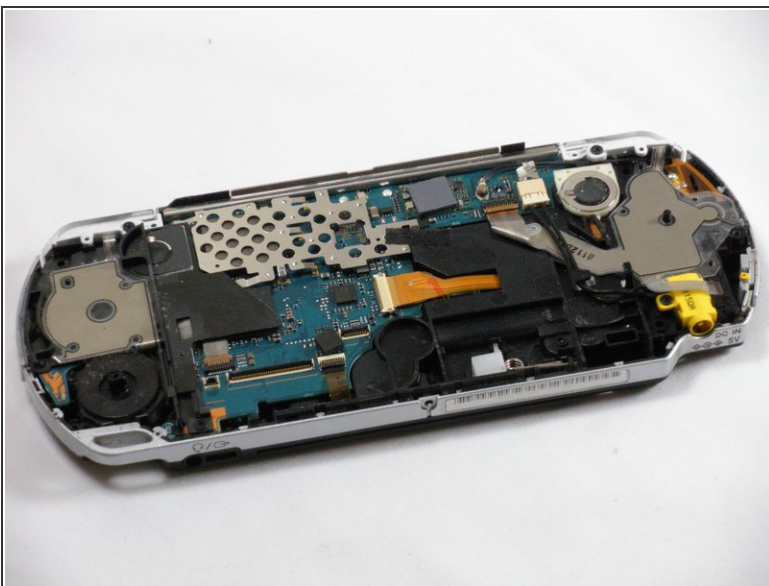
Step 11 — Logic Board



- Remove the following four connections:
 - Two ribbon cables -- flip up latch and remove horizontally.
 - One wire clamp -- use an opening tool to pry it up vertically.
 - One wiring harness -- use your fingers, a PSP opening tool, or tweezers to disconnect the connector horizontally.

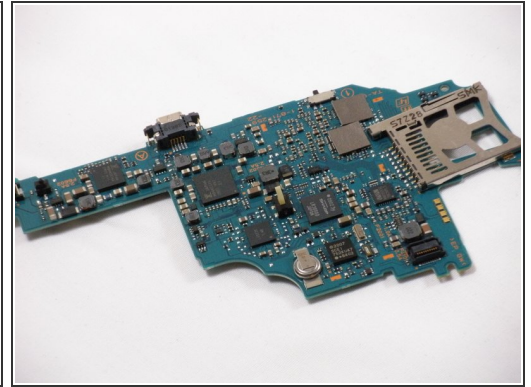
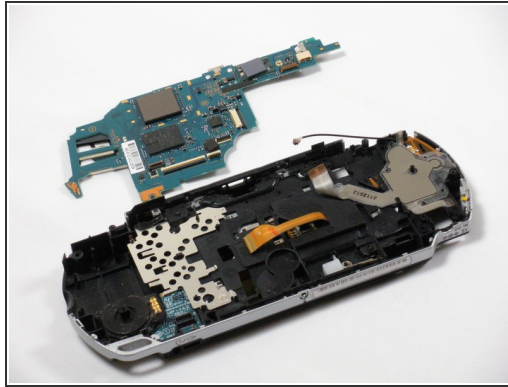
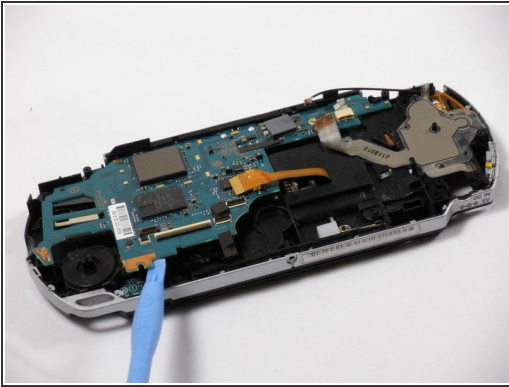
⚠ The ribbon cable near the wire clamp has a brown tab that should be lifted using an opening tool prior to removal. Be careful to not damage the ribbon or connector.

Step 12



- Remove metal shields by gently lifting them with an opening tool.

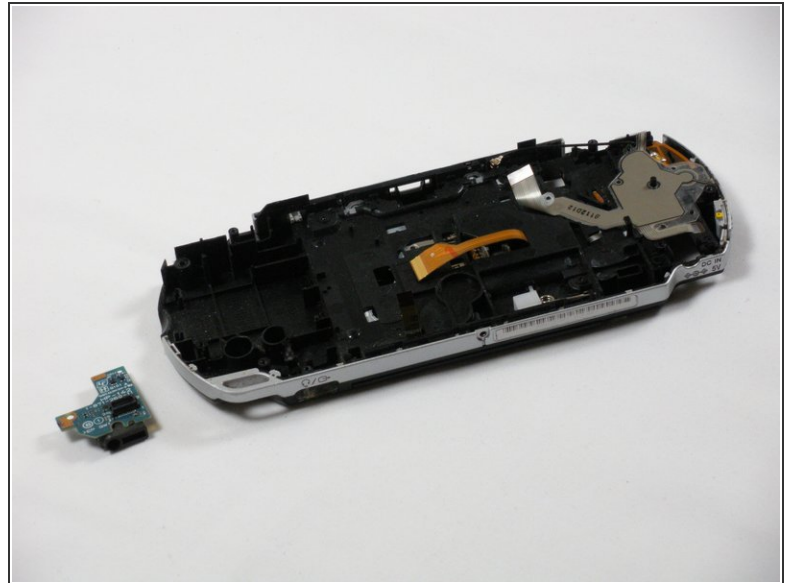
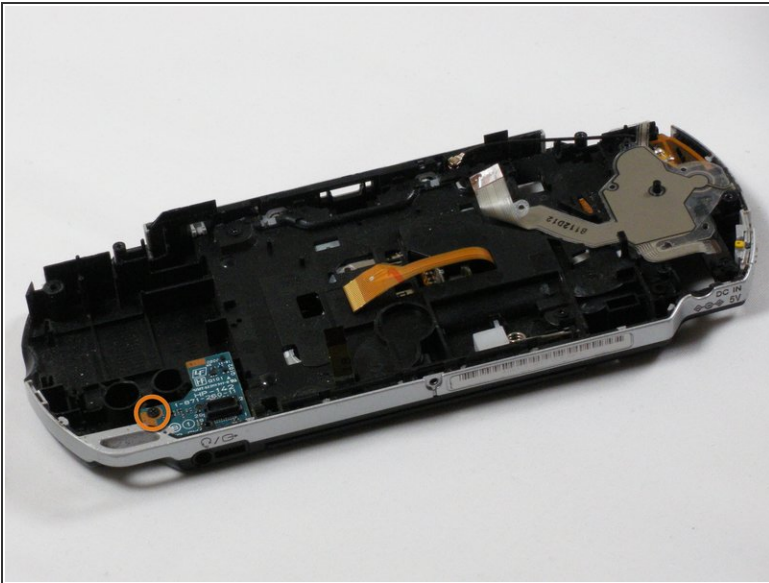
Step 13



- ☑ Double-check to make sure that all connections to the board are unplugged in order to avoid damage to your PSP.

- Using an opening tool, delicately raise the logic board from its base.

Step 14 — Audio Jack



- With the logic board out of the way, remove the 4mm Phillips screw.
- Carefully lift the headphone jack out of the casing.
- Carefully lift headphone jack out of casing.

To reassemble your device, follow these instructions in reverse order.