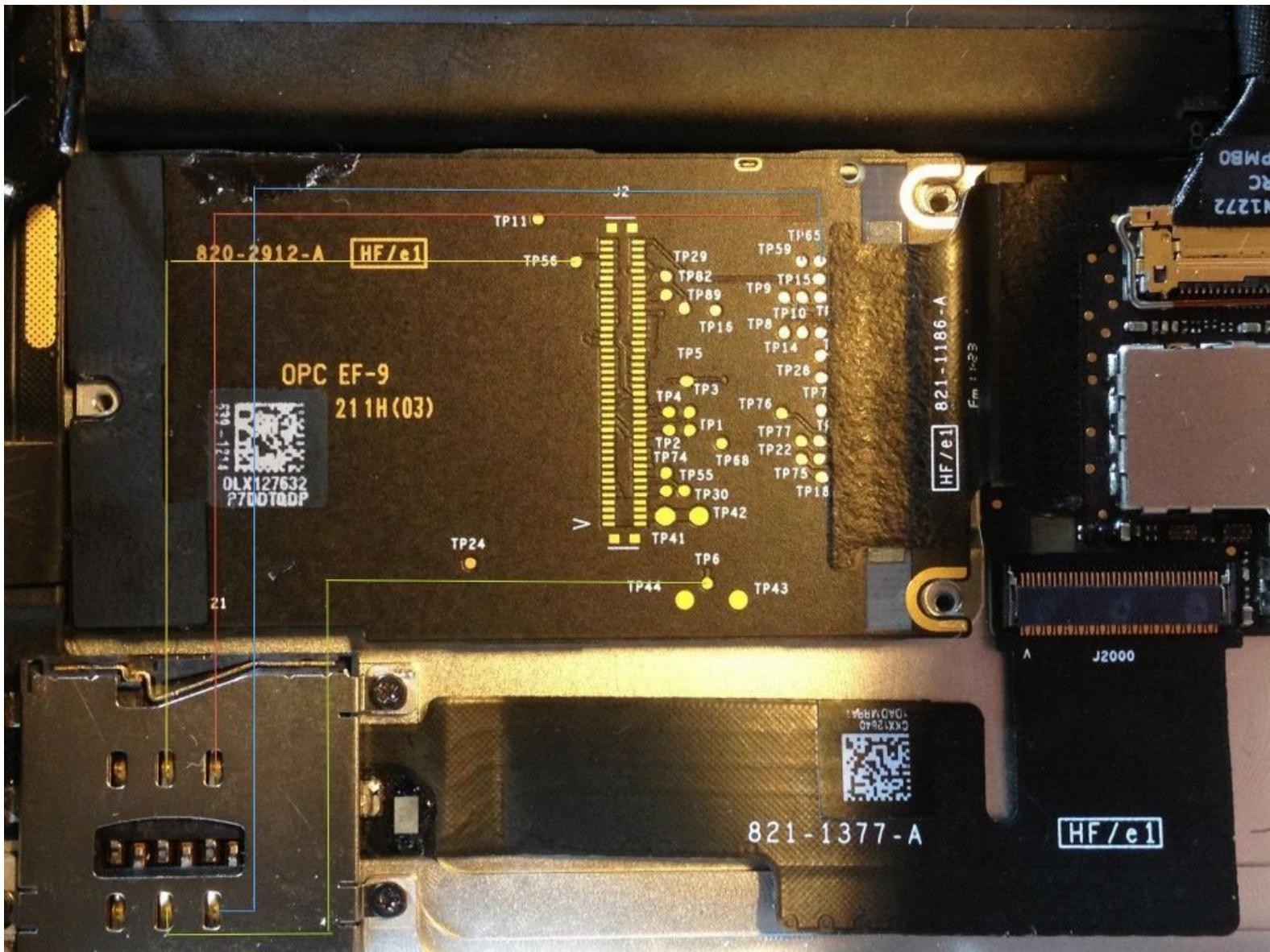




Fixing a non-reading SIM Card

If you install the sim card in the sim drawer...

Written By: Sisyphé



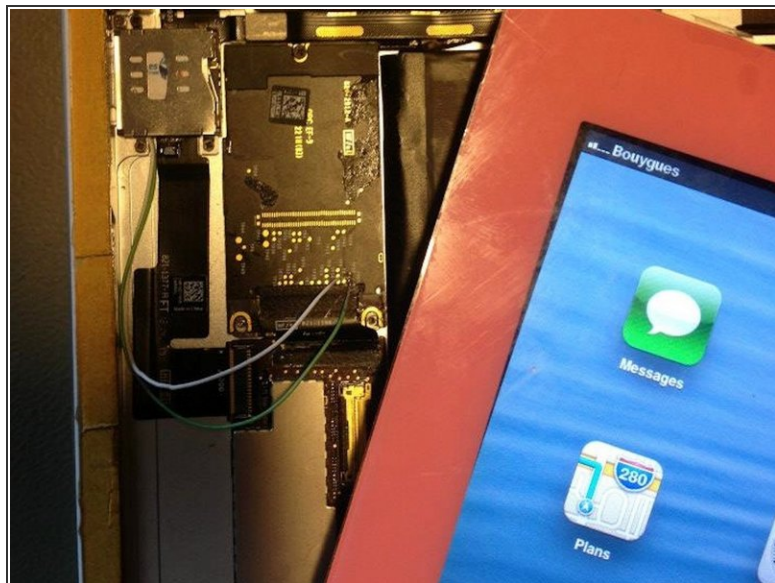
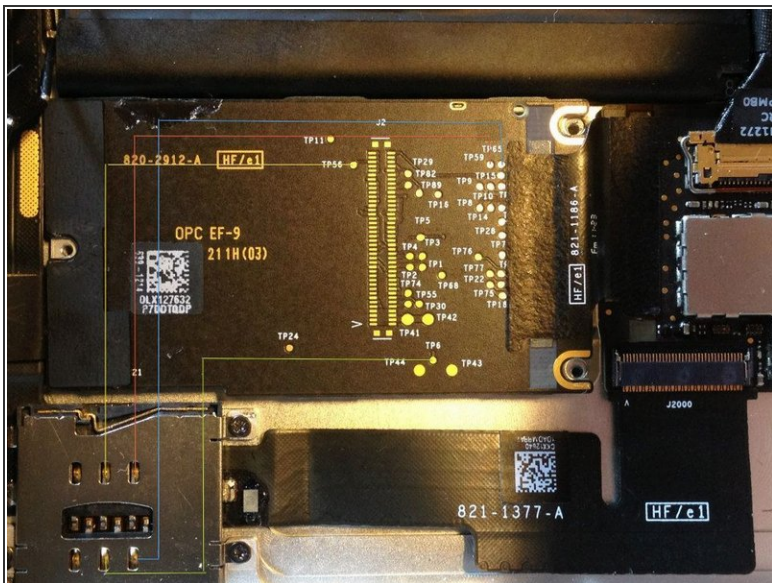
INTRODUCTION

If you install the sim card in the sim drawer the iPad 2 and it says "no sim card installed", use this guide to repair an iPad 2 that does not recognize the SIM after installation.

TOOLS:

- [Phillips #00 Screwdriver](#) (1)
 - [Lead-Free Solder](#) (1)
 - [Soldering Iron](#) (1)
 - [Heat Gun](#) (1)
 - [Metal Spudger](#) (1)
 - [Spudger](#) (1)
 - [Volt Ohm Meter](#) (1)
-

Step 1 — Fixing a non-reading SIM Card



- In this case, check all traces as shown on picture with a volt/ohmmeter.
- If some are broken make a shunt, as in the second picture to get the sim reader fully working.

To reassemble your device, follow these instructions in reverse order.