



Samsung Epic 4G Touch Rear Case Replacement

Replace the Rear Case in your Samsung Epic 4G Touch.

Written By: Walter Galan



INTRODUCTION

Use this guide to replace the rear case.



TOOLS:

- [iFixit Opening Tools](#) (1)



PARTS:

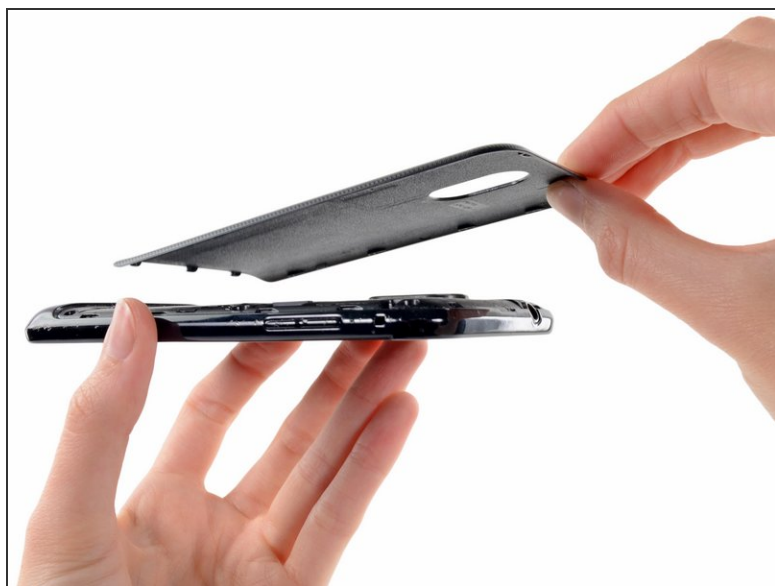
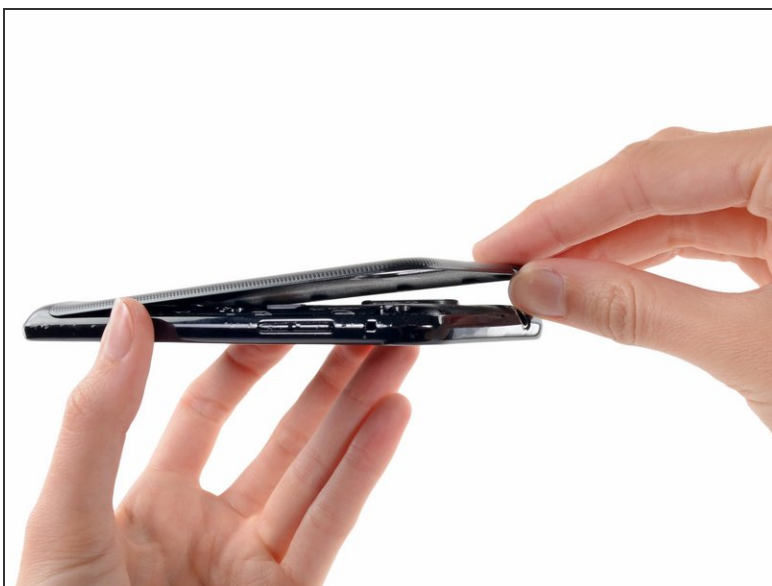
- [Samsung Galaxy S II S2 Rear Battery Cover \(ATT\)](#) (1)
- [Samsung Galaxy S II S2 Rear Battery Cover \(T-Mobile\)](#) (1)

Step 1 — Rear Case



- Insert a plastic opening tool, or your fingernail, into the opening near the left side of the headphone jack.
- Pry the opening tool downward to pop the rear case from its clips securing it to the the midframe.

Step 2



- Lift and remove the rear case.

To reassemble your device, follow these instructions in reverse order.