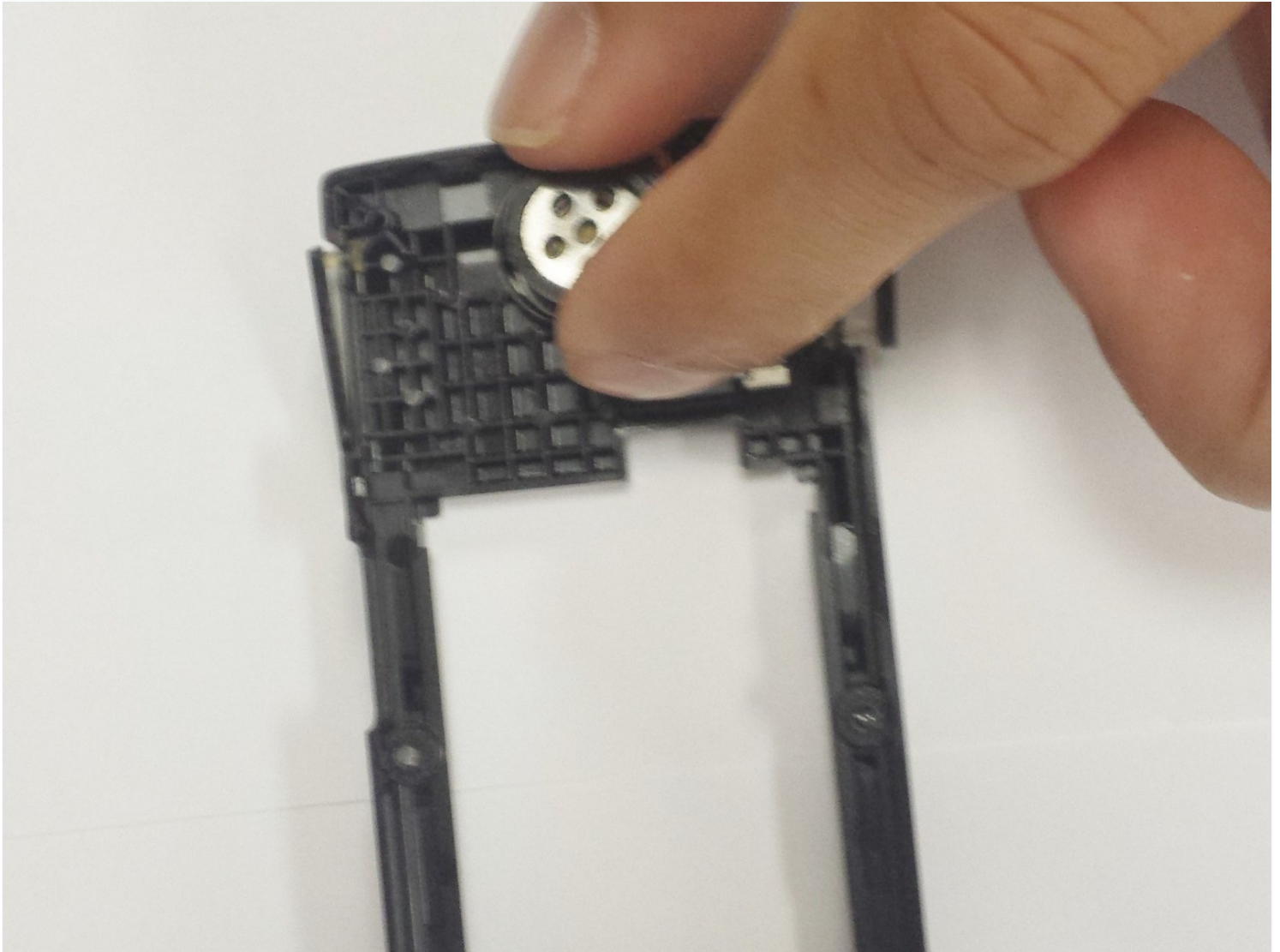




# Samsung SPEX SCH-R210 Speaker Replacement

This guide is necessary for replacing the...

Written By: Susan



# INTRODUCTION

This guide is necessary for replacing the speaker of a Samsung SPEX SCH-R210. Replacing the speaker of the phone will help improve the the quality of the phone's volume. A new speaker will allow the phone to project sound more clearly and loudly. This process involves removing the back cover, the battery, and the plastic cover over the motherboard in order to locate the speaker. Hazards of this process may be any sharp pieces inside the phone underneath the cover that will be removed. The entire process must be done slowly, and carefully so that no damage is done to the phone. The motherboard is an important part of the phone's functional purpose and must not be damaged during the process. No specific skills are required while following this guide. When removing the screws keep them in a safe place. The screws will be used after replacing the speaker to put the cover back on the phone.

---

## TOOLS:

Phillips #00 Screwdriver (1)

---

### Step 1 — Back Cover



- Lay the phone on its front side so the back is visible.
- Use your thumb to gently and firmly press down on the triangle arrow found on the cover of the phone.
- Press down on the arrow until you hear a popping sound, which will remove the cover of the phone.
- Slide the cover down from the phone to remove it. Set the cover aside.

## Step 2 — Battery



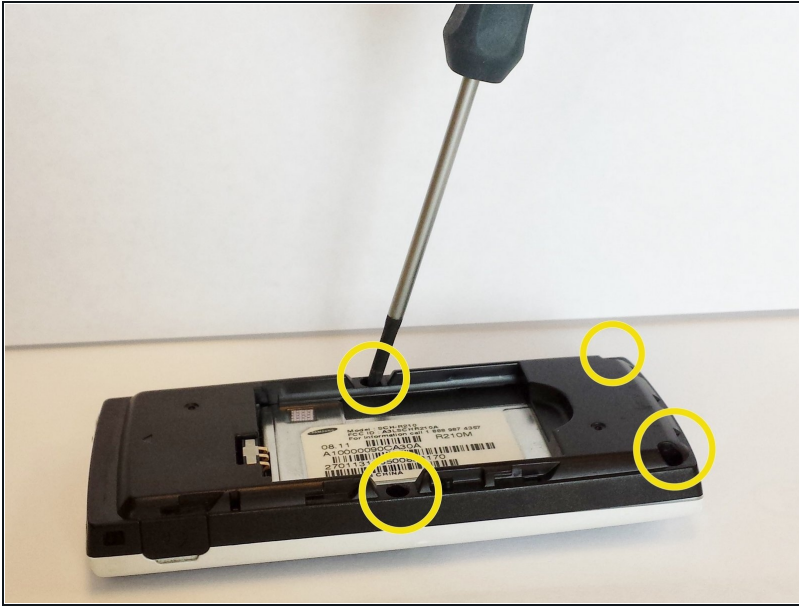
- Locate the access notch at the end of the battery compartment.

## Step 3



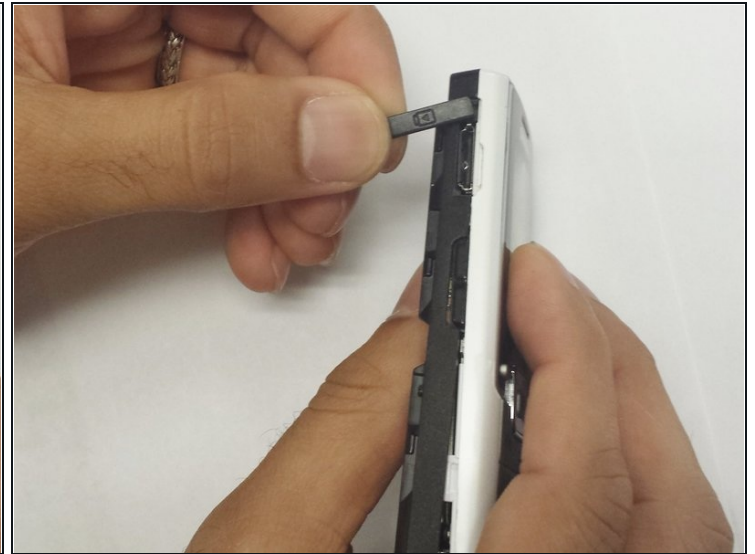
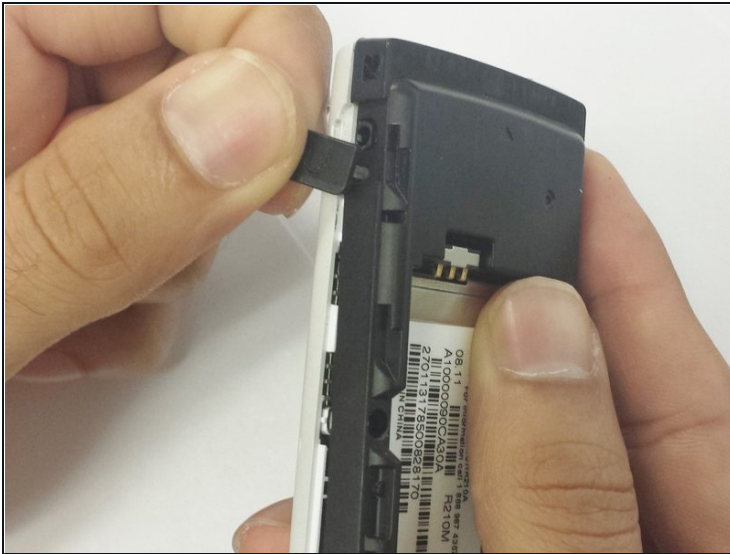
- Place your thumb on the edge of the battery near the access notch.
- Lift the battery to remove it from the phone. Set the battery aside.

## Step 4 — Speaker



- Use a Phillips #00 screwdriver to unscrew the four 3/16" screws holding the black plastic cover of the phone in place.

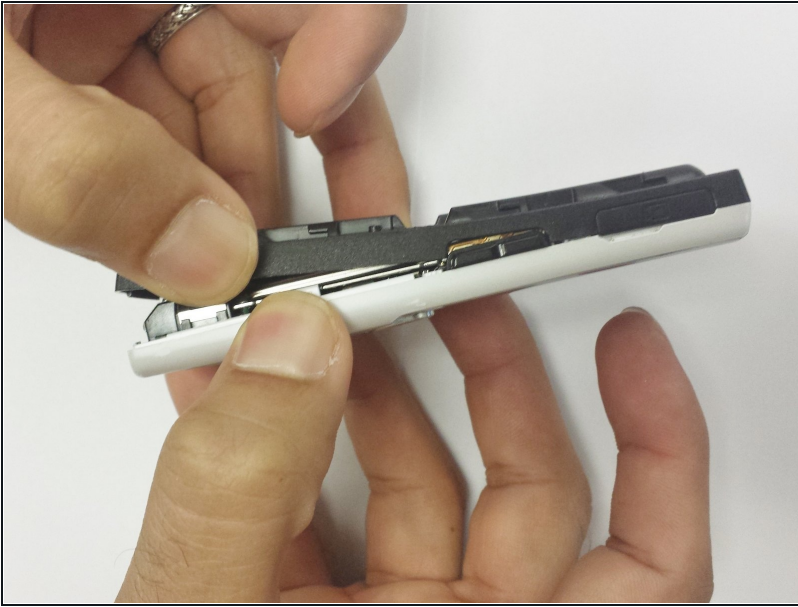
## Step 5



- Remove the small, black headphone cover from the left side of the phone by gently pulling it off.
- Remove the small, black volume cover from the right side of the phone by gentle pulling it off.

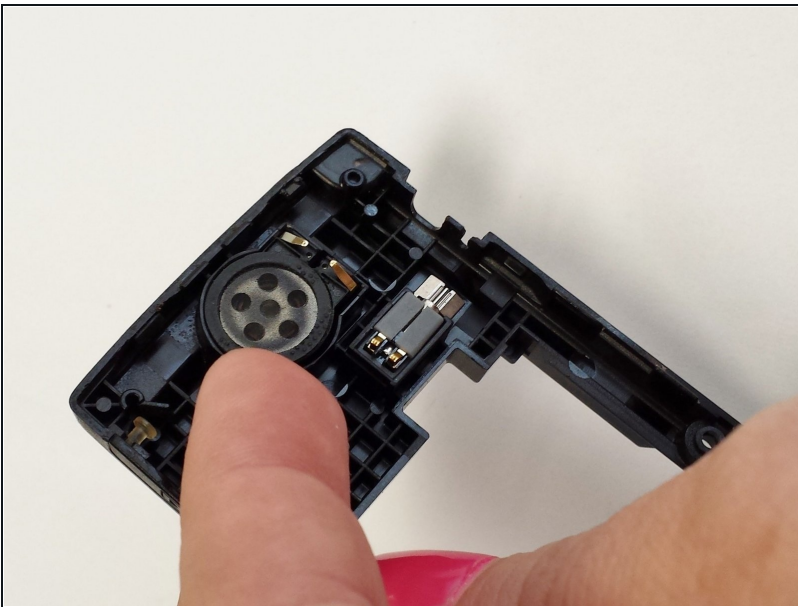


## Step 6



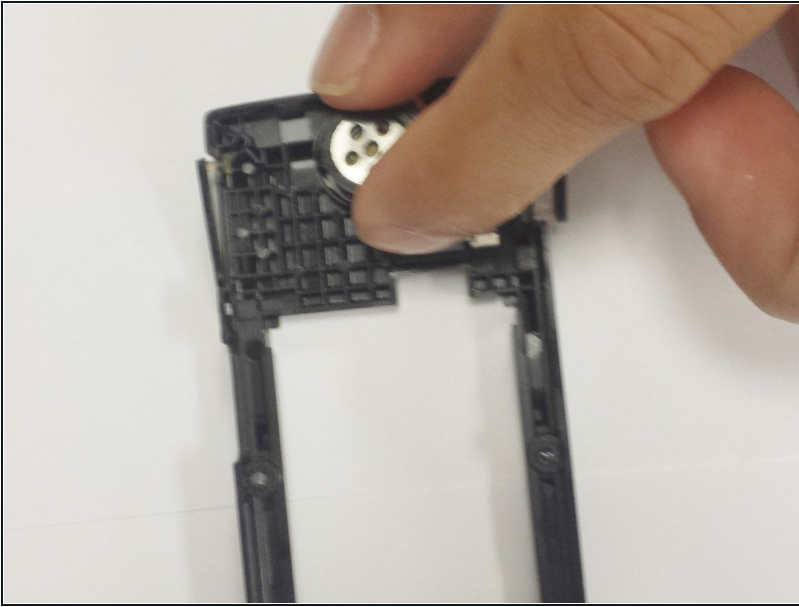
- Remove the black plastic cover from the back of the phone by slowly pulling it off. This may take a little effort.

## Step 7



- Once the plastic cover is removed, turn the cover over so that the insides are visible.
- Using your fingernail, pry out the small, grey, circular speaker from the cover.

## Step 8



- Remove the old speaker, discard it and replace it with a new speaker.

---

To reassemble your device, follow these instructions in reverse order.