



TOSHIBA
DISK DRIVE
HDD2H77 P TM01 T
DC+5V 1.0A
010 D0/FH115B
D33003
E145163
S/N 89CLT4CUT G85 E1
8455MB (CYL16383, H16, S
320GB(LBA 625, 142, 448Sector
TOSHIBA CORPORATION
非律宾制造
MADE IN PHILIPPINES
REMOVED OR LICENSED UNDER ONE OR MORE OF THE FOLLOWING PATENTS:
6,751,515; 5,799,145; 5,801,897; 5,847,890; 4,686,622; 4,896,260; 4,942,516
655-1551A
006 LIBRS 655-1551A *WL 933T2HJ7A5A*

Page 1 of 4

INTRODUCTION

This guide is an internal prereq that should remain unpublished.



TOOLS:

- [Phillips #00 Screwdriver](#) (1)
-

Step 1 — Hard Drive



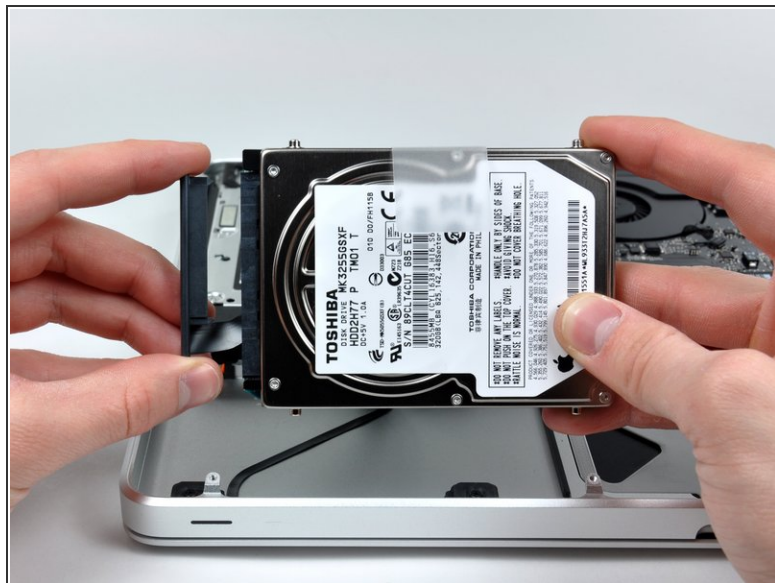
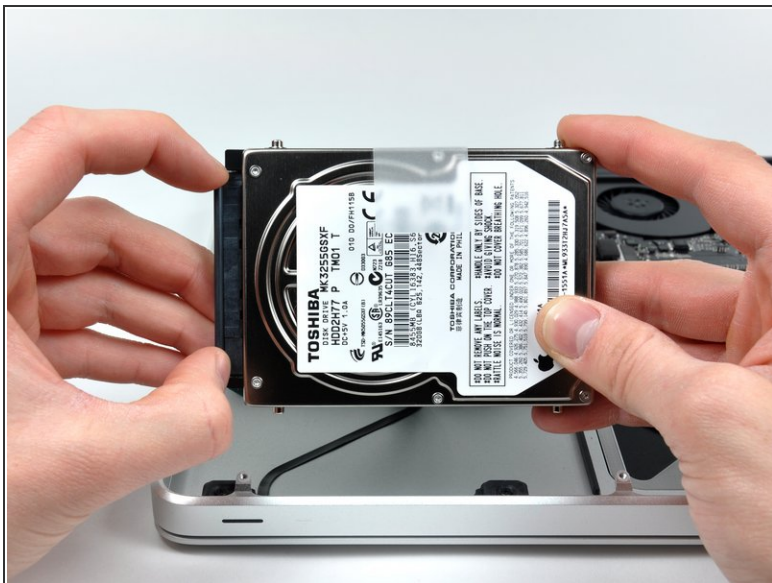
- Remove the two Phillips screws securing the hard drive bracket to the upper case.
- ⓘ These screws are captive to the hard drive bracket.
- Lift the the retaining bracket out of the upper case.

Step 2



- Lift the hard drive by its pull tab and pull it out of the chassis, minding the cable attaching it to the computer.

Step 3



- Remove the hard drive cable by pulling the hard drive straight away from the connector. Keep the connector steady. If pulled by the connector, it can be pulled too far and accidentally tear the hard drive cable.

To reassemble your device, follow these instructions in reverse order.