



# Blackberry 7520 SIM Card Replacement

Written By: Nathan



# INTRODUCTION

To replace or install a SIM card in your Blackberry 7520, follow this guide.

## Step 1 — Battery



- Turn the phone upside down.
- Push down on the black button on the back of the phone to slide the rear panel off.
- The battery should be visible now.

## Step 2



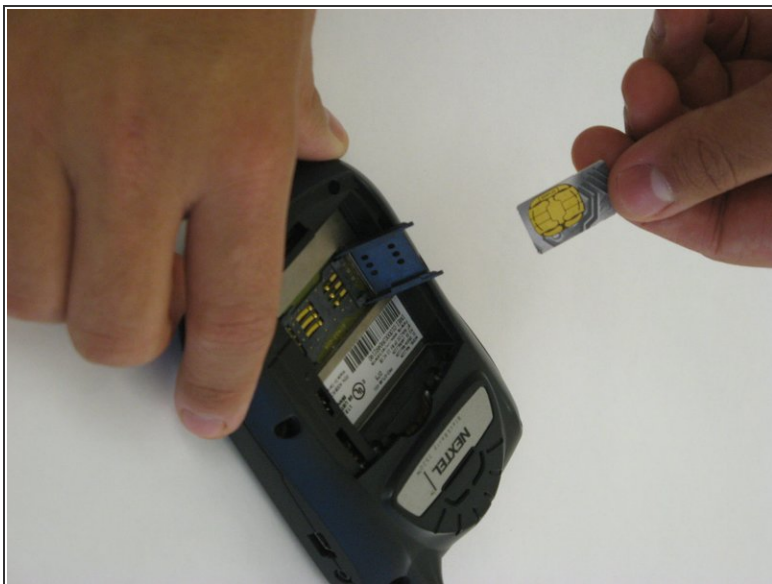
- Hold the BlackBerry in one hand face-up with the screen facing towards you.
- ⓘ **Gently** smack the phone against your hand to dislodge the battery.

### Step 3 — SIM Card



- Push back on the black slot, then grab hold on top of the black slot and pull back so the SIM card and black slot pull back.

### Step 4



- Remove the SIM card by sliding it out of the black tray.
- Insert the replacement SIM card with the gold plated side with lines facing down. Fold the black tray down with the SIM card in and push forward until the tray "slides" into place.

To reassemble your device, follow these instructions in reverse order.