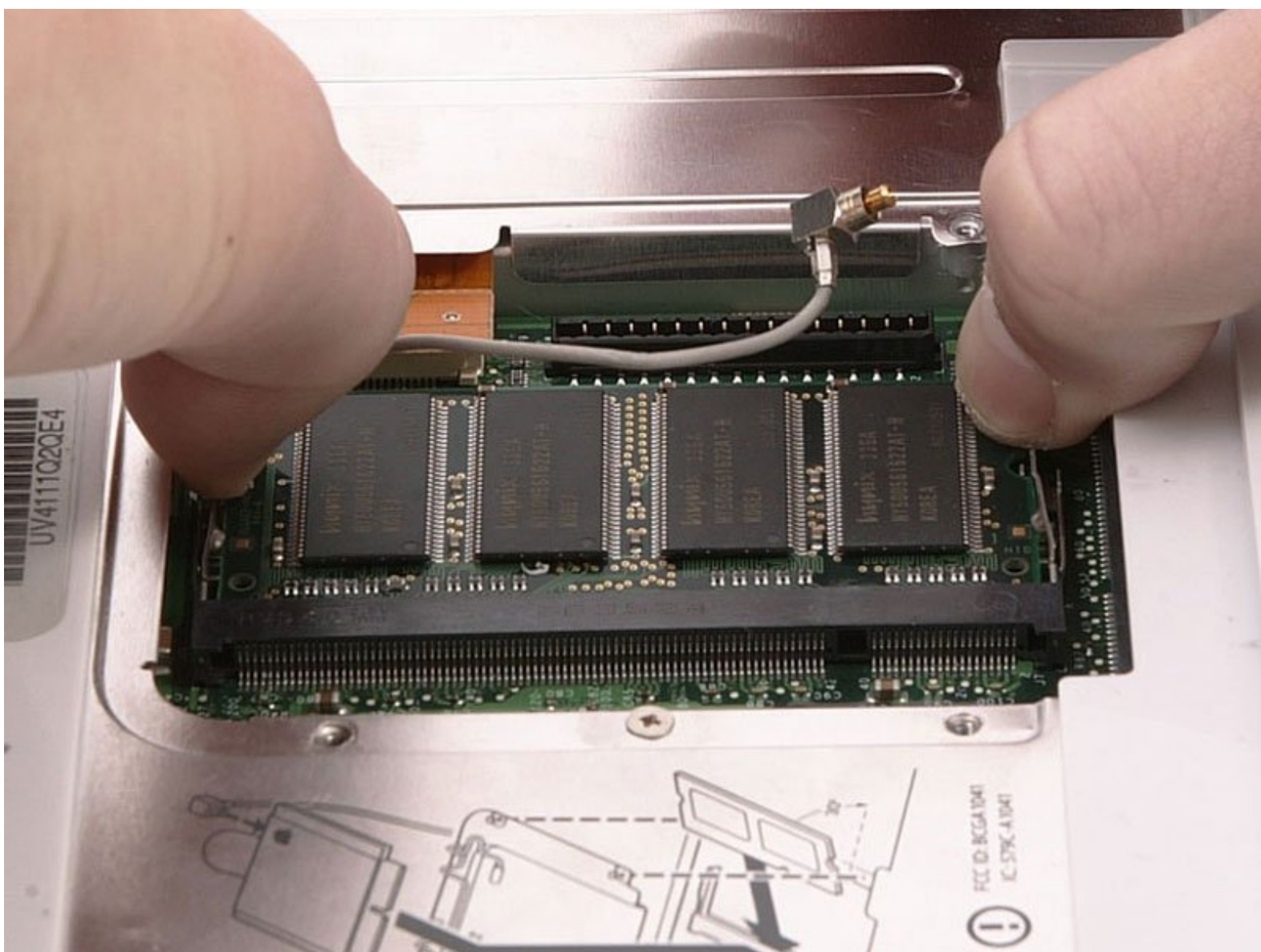




# iBook G4 14" 933 MHz-1.33 GHz RAM Replacement

Written By: iRobot



# INTRODUCTION

One RAM slot will accept PC2100 or PC2700 chips up to 1 GB.



## TOOLS:

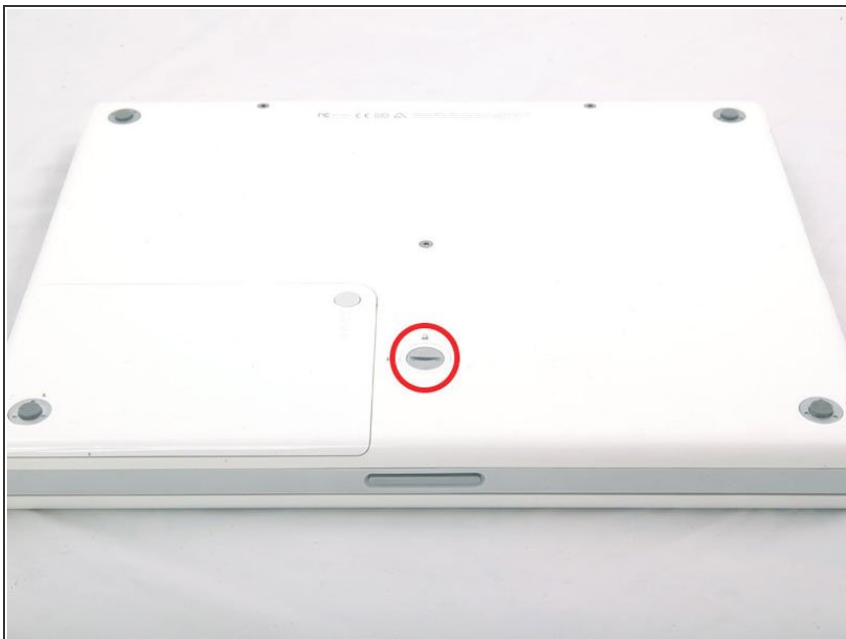
- [Anti-Static Wrist Strap](#) (1)
- [Coin](#) (1)
- [Phillips #00 Screwdriver](#) (1)
- [Flathead 3/32" or 2.5 mm Screwdriver](#) (1)



## PARTS:

- [PC2100 128 MB RAM Chip](#) (1)
- [PC2100 512 MB RAM Chip](#) (1)
- [PC2700 1 GB RAM Chip](#) (1)
- [iBook G4 RAM Shield](#) (1)
- [PC2100 256 MB RAM Chip](#) (1)
- [PC2700 256 MB RAM Chip](#) (1)
- [PC2700 512 MB RAM Chip](#) (1)

## Step 1 — Battery



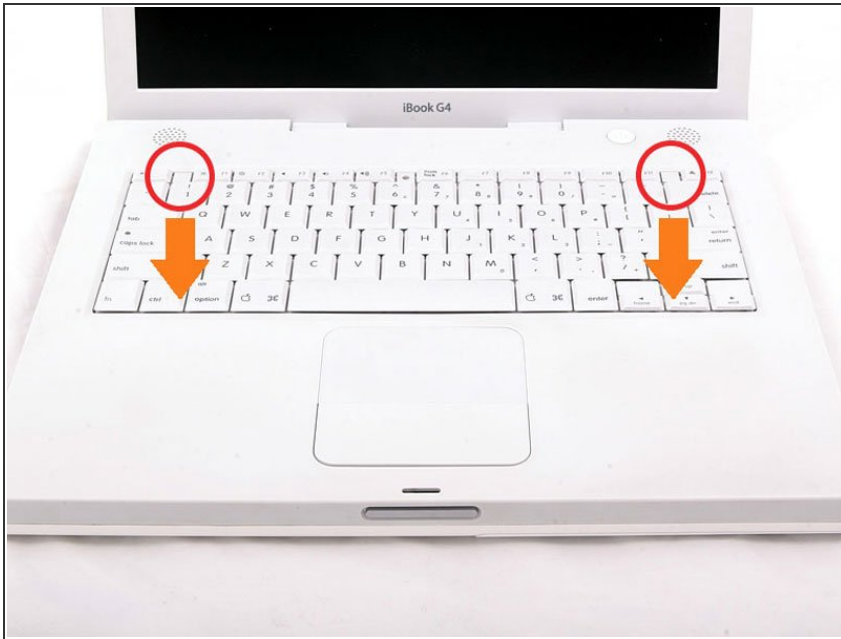
- Use a coin to rotate the battery locking screw 90 degrees clockwise.

## Step 2



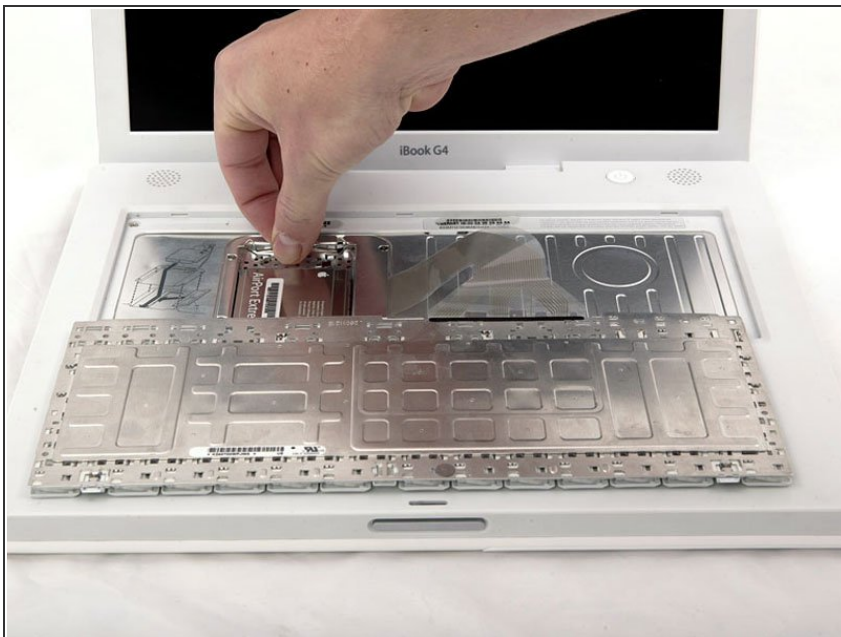
- Lift the battery out of the computer.

## Step 3 — Keyboard



- Pull the keyboard release tabs toward you and lift up on the keyboard until it pops free.
- ⓘ If the keyboard does not come free, use a small flathead screwdriver to turn the keyboard locking screw 180 degrees in either direction and try again. The locking screw is in between the F5 and F6 keys and is a clear piece of plastic.
- Flip the keyboard over, away from the screen, and rest it face-down on the trackpad area.

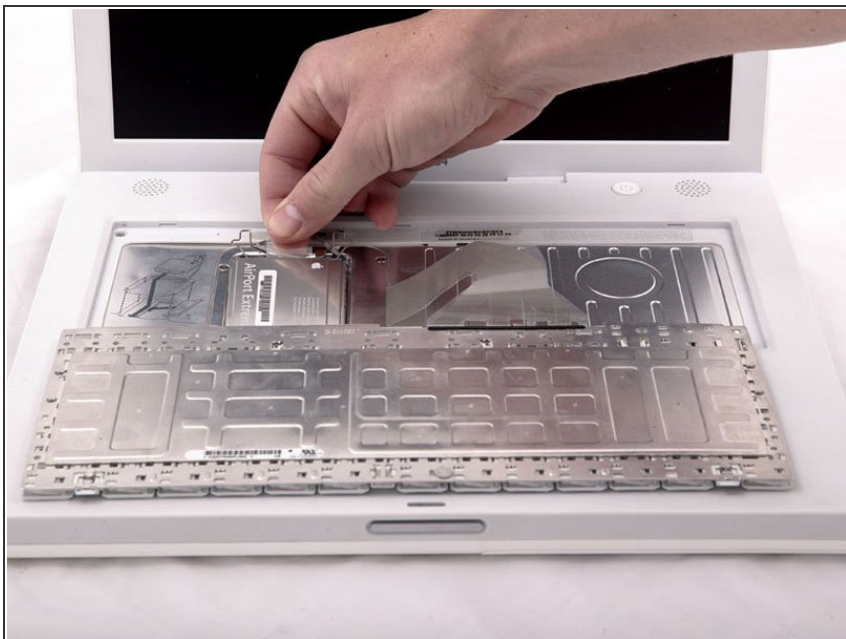
## Step 4



- ⓘ If the computer has an AirPort card installed, follow the next three steps to remove it.
- Push the wire clasp away from the AirPort card and toward the display, then rotate up to free it from the RAM shield.

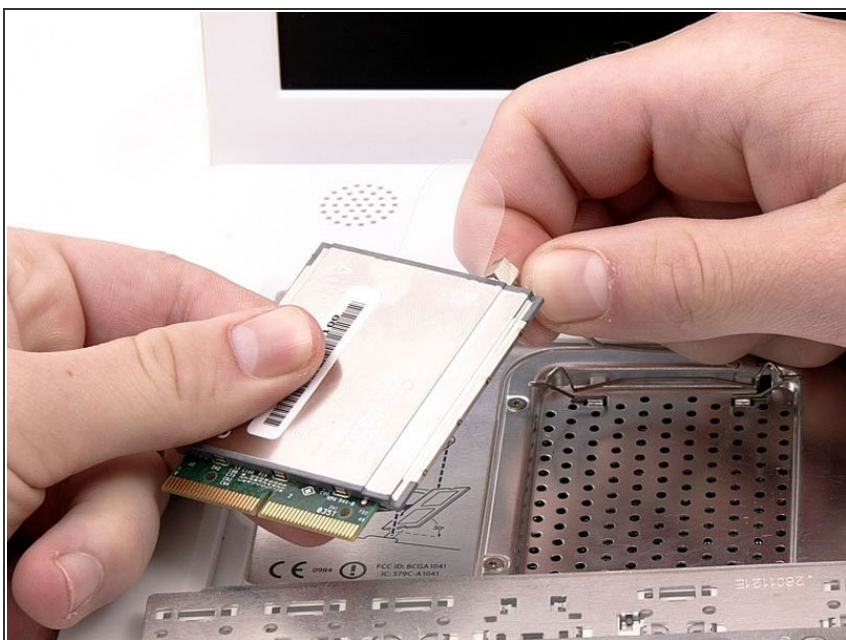


## Step 5



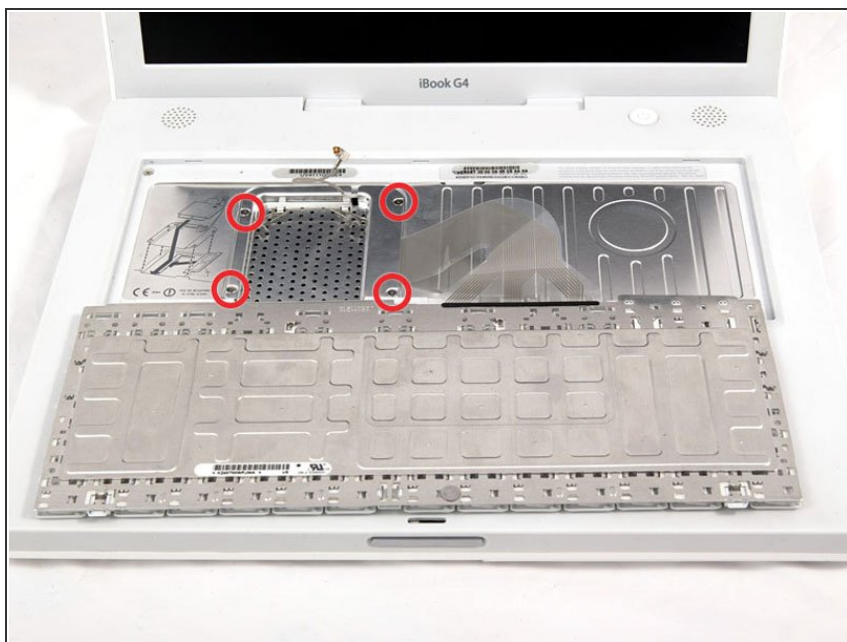
- Grasp the clear plastic tab on the AirPort card and pull toward the display.

## Step 6



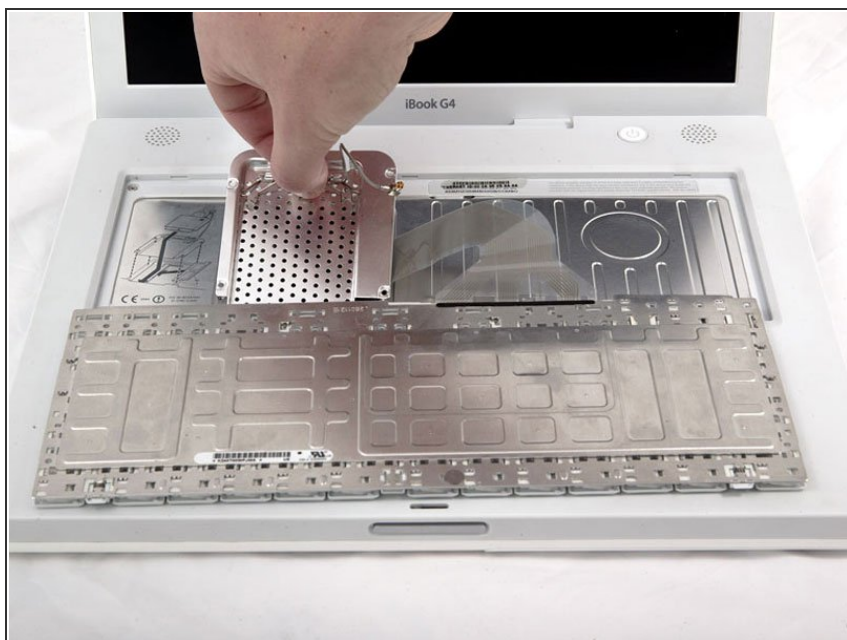
- Hold the AirPort card in one hand and use your other hand to remove the antenna cable.

## Step 7



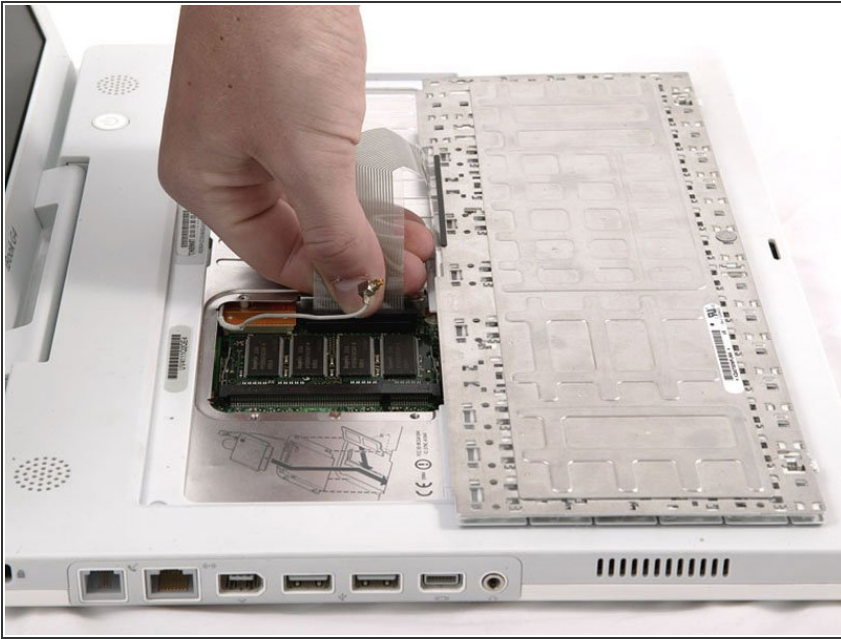
- Remove the four silver Phillips screws that secure the RAM shield.

## Step 8



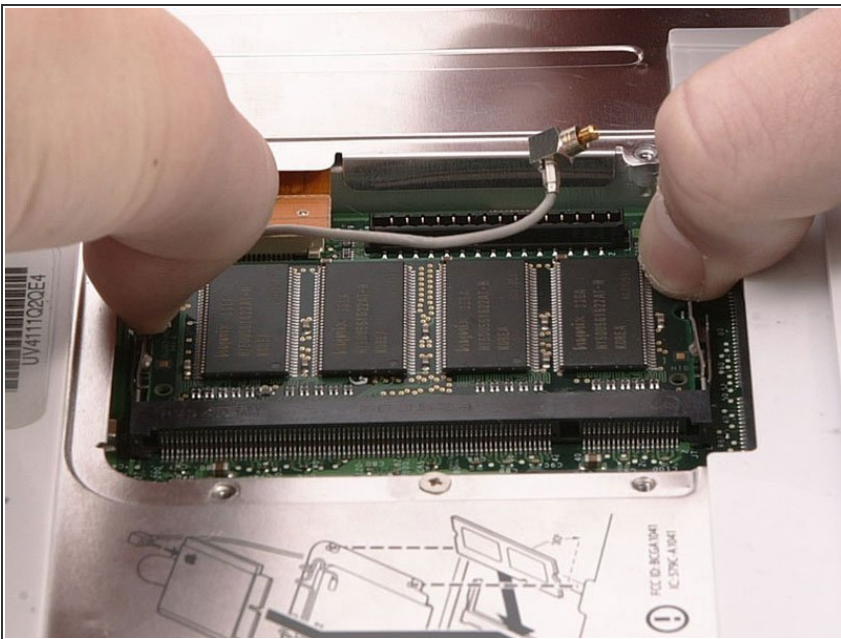
- Grasp the metal bracket on top of the RAM shield and pull upward to remove the shield.

## Step 9



- Pull the keyboard cable up from the logic board, holding the cable as close to the connector as possible.
- ★ Make sure that you reconnect the keyboard cable before replacing the RAM shield.

## Step 10 — RAM

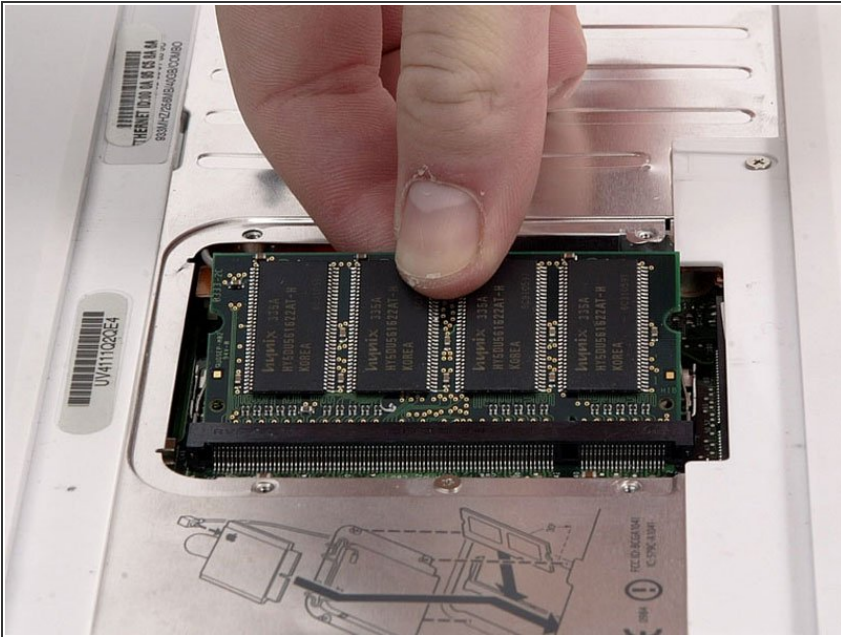


- Release the tabs on each side of the RAM chip at the same time. These tabs lock the chip in place and



releasing them will cause the chip to "pop" up.

## Step 11



- Pull the chip directly out from its connectors.

To reassemble your device, follow these instructions in reverse order.