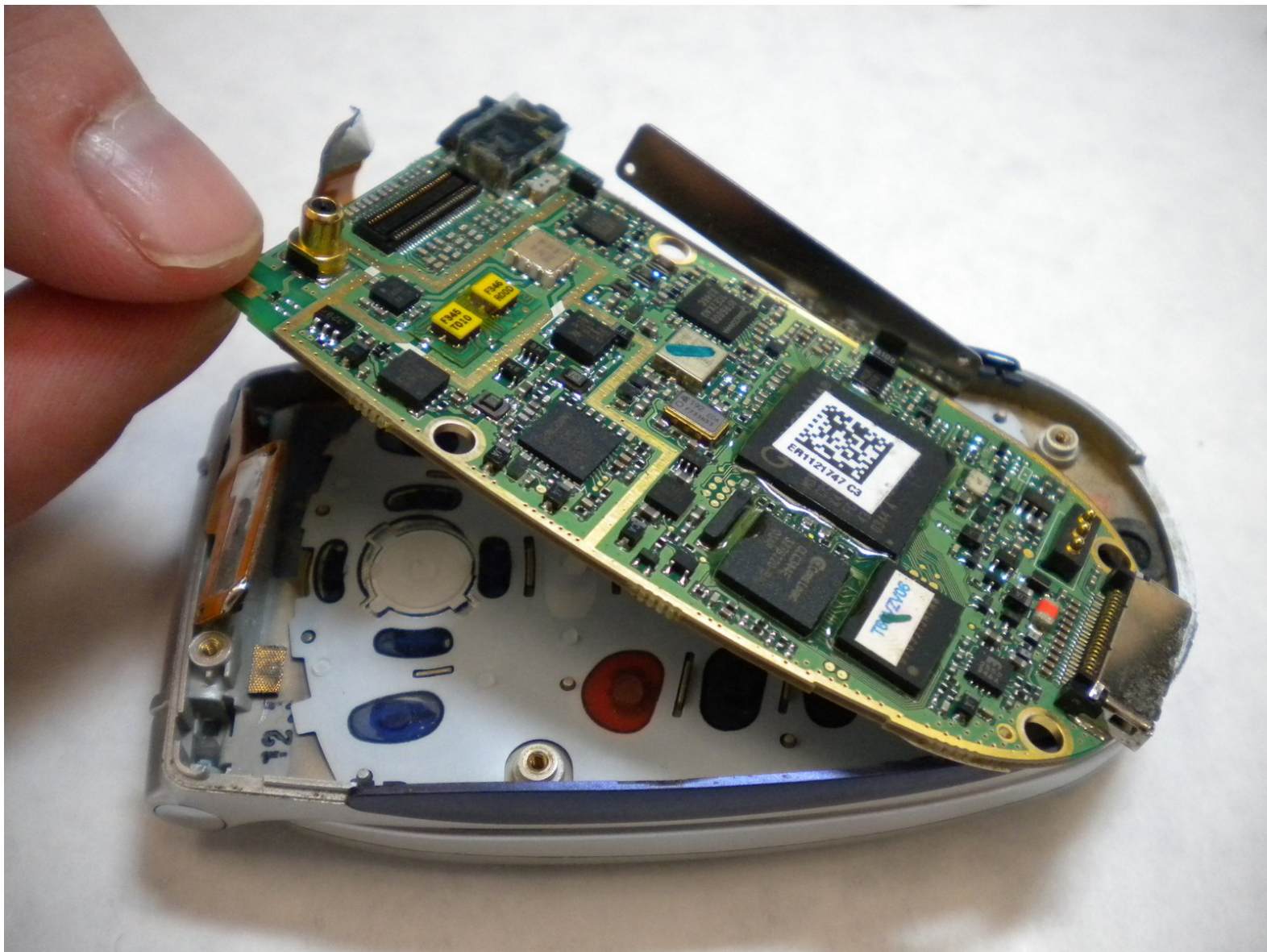




# LG VX6000 Logic Board Replacement

Written By: Adam Altman



## INTRODUCTION

This guide is designed to remove or replace the logic board of the LG VX6000.



### TOOLS:

- [Phillips #1 Screwdriver](#) (1)



### PARTS:

- [LG VX6000 Logic Board](#) (1)

## Step 1 — Battery



- Locate the dark gray tab on the back of the phone towards the top. Push the tab towards the top of the phone to release the battery.

## Step 2



- ⓘ Remove the battery by lifting up and rotating the battery away from the bottom edge.



## Step 3 — Body



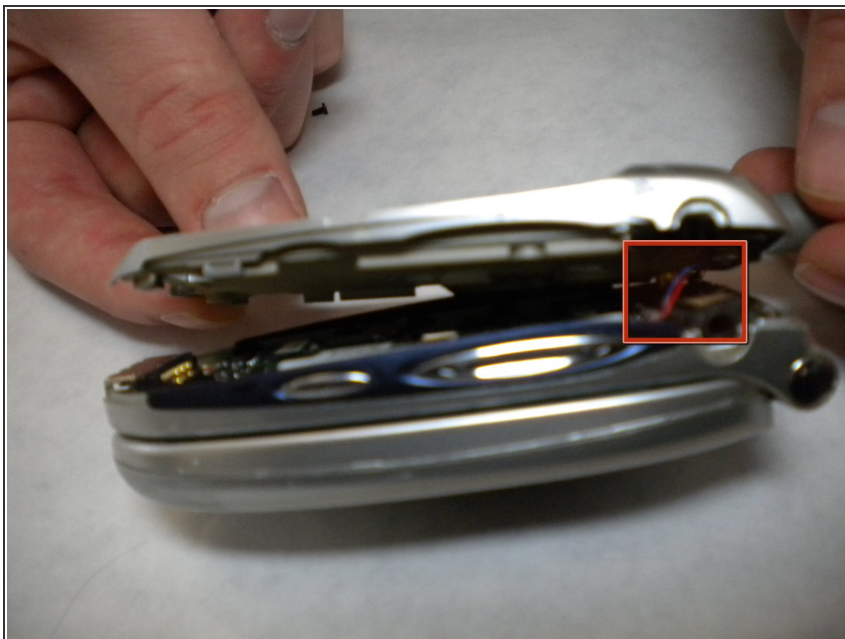
- Pull out the two rubber cushions located on the top of the phone using tweezers.
- ⓘ Only remove the two cushions that are circled!

## Step 4



- Unscrew the six screws seen on the back using a Phillips 00 Screwdriver.
- Remove screws and carefully place on an uncluttered surface or in a small container.

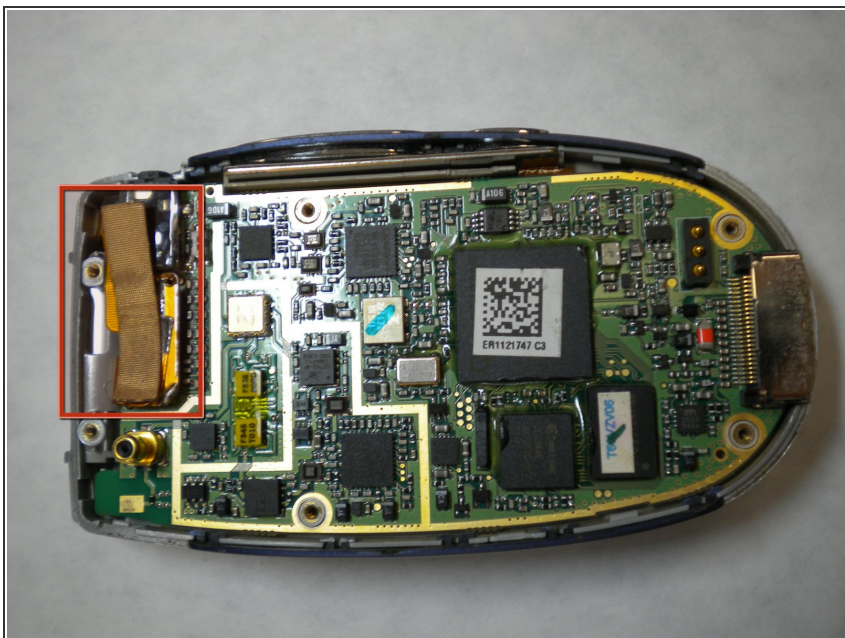
## Step 5



- Carefully remove the back of the phone gently using your fingernails or tweezers.

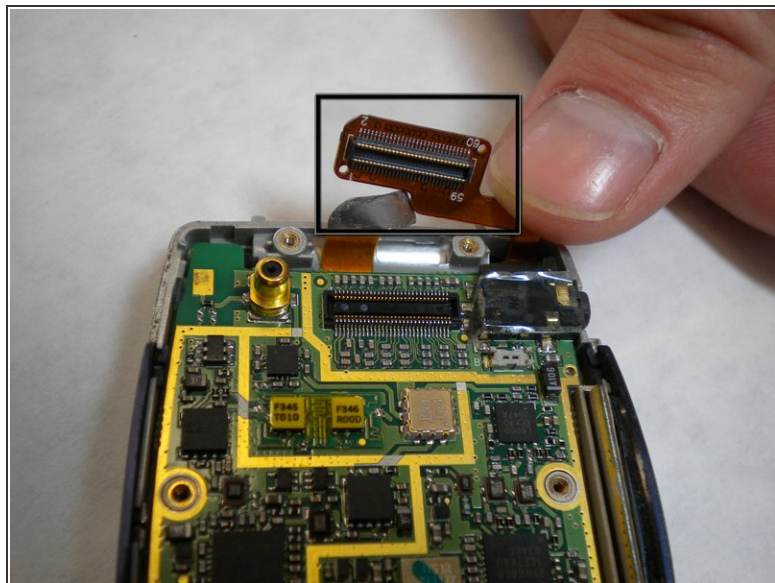
- ⚠ There are a pair of red and blue wires that plug into the motherboard. These wires will snap if you force the pieces apart.
- ★ To reattach the back, you must plug these wires back in.

## Step 6 — Logic Board



- Carefully peel off the adhesive tab as shown in the photo
- ⚠ The tab should not fully separate from the phone.

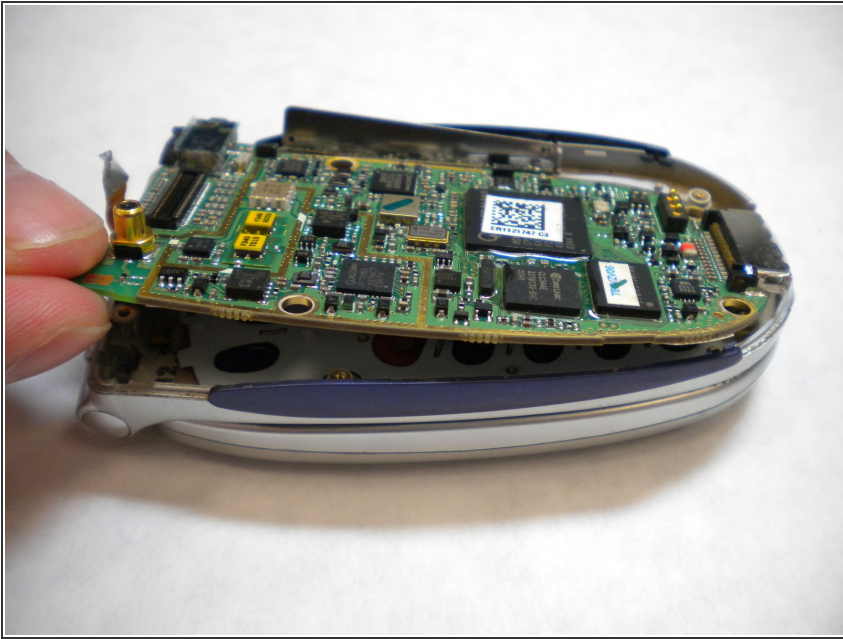
## Step 7



- Locate the yellow connection towards the top of the phone. This is directly connected to the screen.
  - Remove the connector by carefully prying it away from the motherboard and lifting it away from the phone
- ⚠ Do not pull too hard on the connector.



## Step 8



- Gently lift a corner of the motherboard away from the casing to remove.

To reassemble your device, follow these instructions in reverse order.