



Samsung Moment Camera Button Replacement

Instructions for replacing a dysfunctional camera button on a Samsung Moment SPH M900 phone.

Written By: Allison Coffee



INTRODUCTION

This guide details how to install a new camera button on your Samsung Moment SPH M900. The camera button is located on the lower right side, distinguished by a black line. We provide directions for both disassembly and reassembly.



TOOLS:

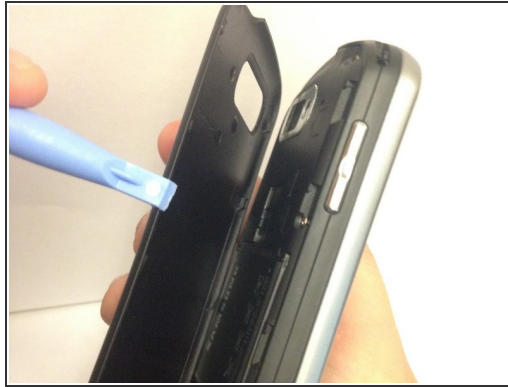
- [Spudger](#) (1)
- [Phillips #000 Screwdriver](#) (1)



PARTS:

- [Samsung Moment SPH M900 phone](#) (1)
- [Replacement camera button](#) (1)
- [Tweezers](#) (1)

Step 1 — Camera Button



- Power off the phone using the "Power Button", the circular middle button in the center of the phone.
- Locate the camera button on bottom right side of your phone
- Remove the back panel of the phone by sliding the spudger along the edge of the phone. The rear plastic panel will snap off from the remainder of the phone.

Step 2



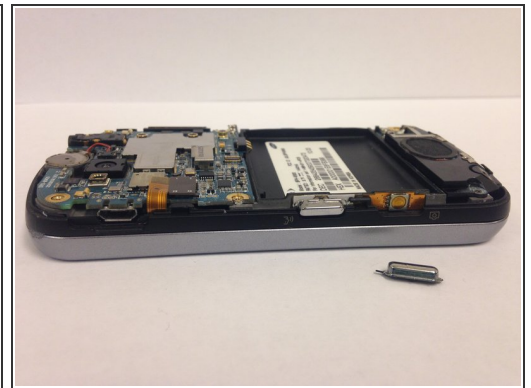
- Remove the battery from the phone by pulling up on the battery edge.

Step 3



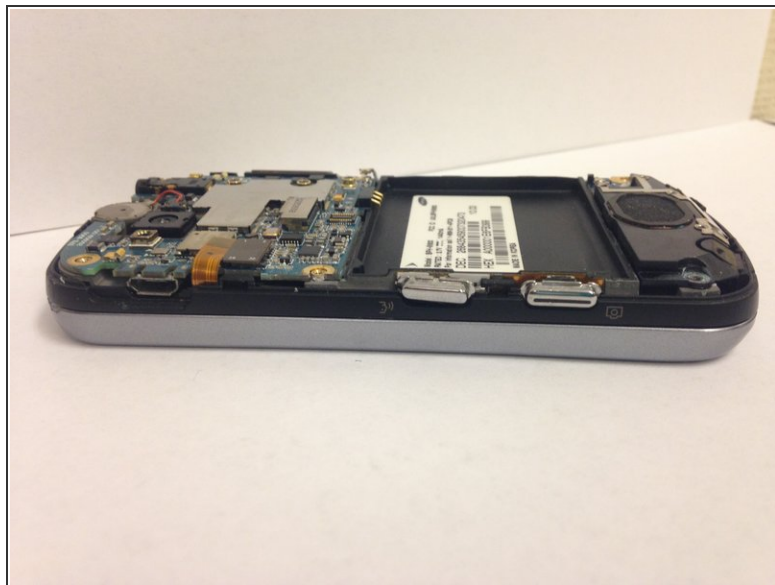
- If you have not already removed the memory card, remove it by gently sliding it out of its holder.

Step 4



- Using the small Phillips #000 screw driver, remove the six screws from the back of the phone.
- Using the spudger tool, separate the back housing from the phone.
- ⚠ While separating the back house from the phone, the three buttons (the volume, the speaker, and the camera button) might fall out. Be sure to keep track of these three buttons and use them for reassembly.

Step 5



- If the camera button did not fall, carefully remove it using a pair of tweezers. At this point, you can replace the button with a new one.

To reassemble your device, follow these instructions in reverse order.

Be sure to gently slide the memory card back in its holder.