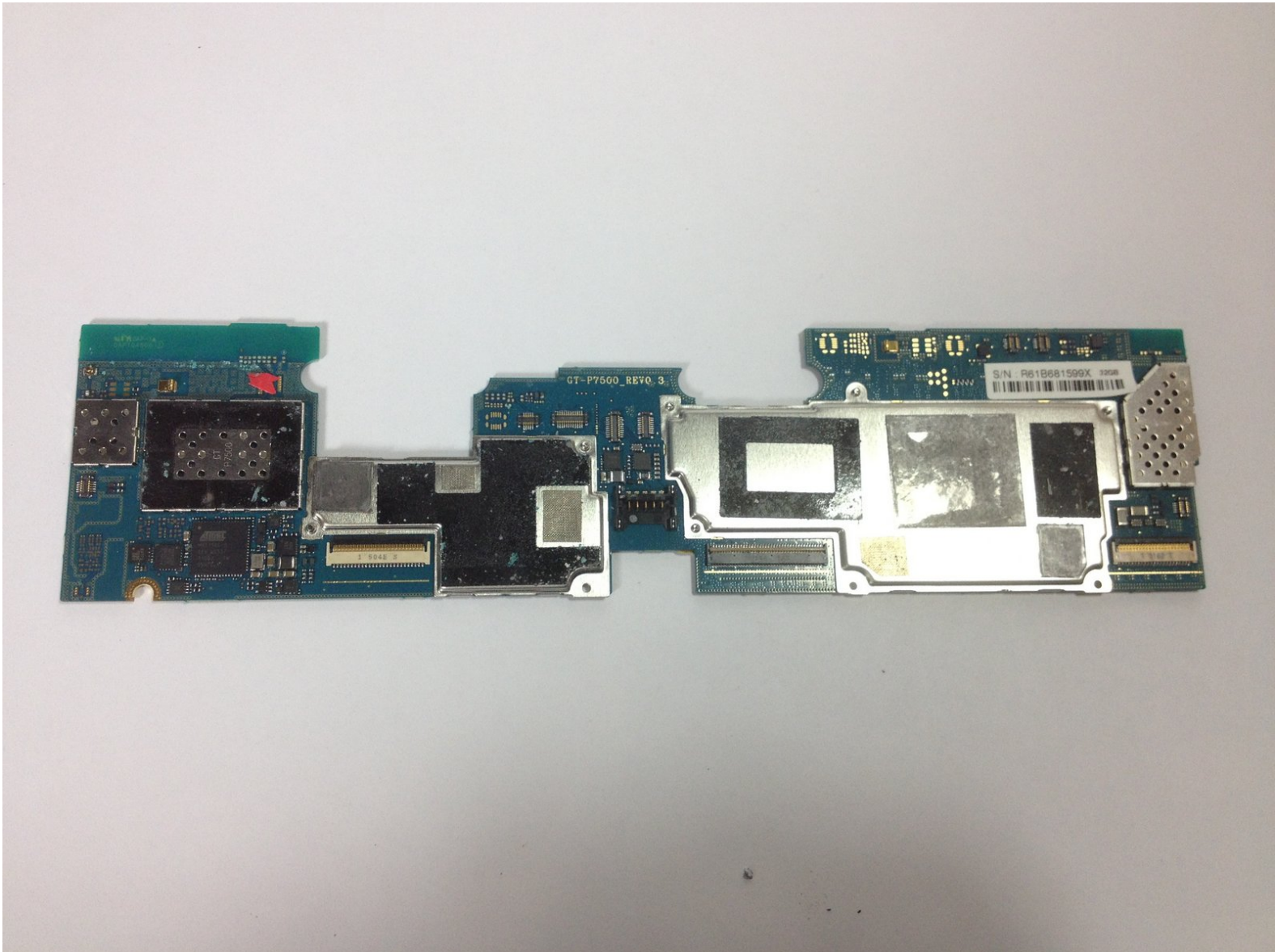




Samsung Galaxy Tab 10.1 Motherboard Replacement

Use this guide to help you replace a damaged or malfunctioning motherboard.

Written By: Davie Sy



INTRODUCTION

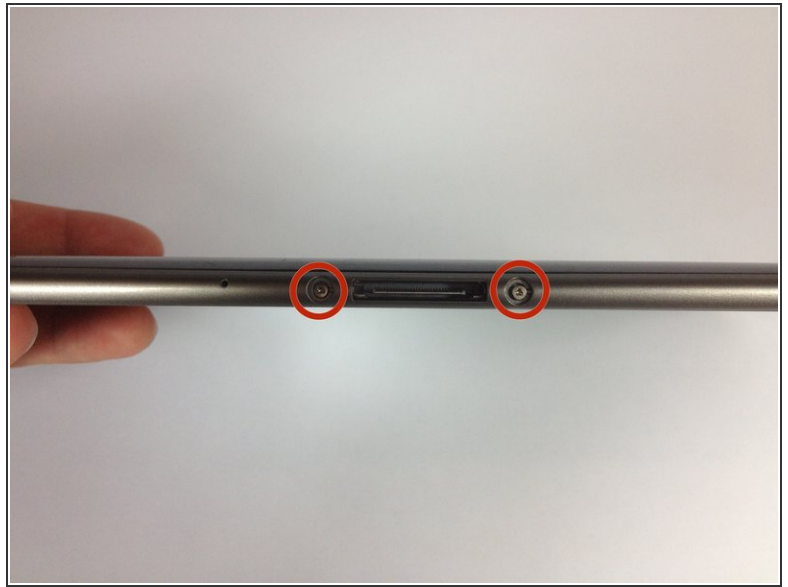
In this guide, you will learn how to replace the motherboard on your Samsung Galaxy Tab 10.1. A faulty motherboard can lead to a multitude of performance issues, especially if your device doesn't turn on at all. There are a couple prerequisites we need to get out of the way first!



TOOLS:

- [Tri-point Y0 Screwdriver](#) (1)
 - [iFixit Opening Tools](#) (1)
 - [Spudger](#) (1)
 - [Y1 Tri-point Screwdriver](#) (1)
 - [iFixit Opening Picks set of 6](#) (1)
 - [Phillips #00 Screwdriver](#) (1)
-

Step 1 — Rear Panel



- Place the bottom of the tablet towards you.
- Remove the 4.1mm screws near the charge port with a Tri-Wing screwdriver.
 - If there are plastic tabs covering these screws, use pointed tweezers to pry the tabs out.
- ⓘ On model GT-P7500, this step is omitted, as that model doesn't have these 2 screws.

Step 2



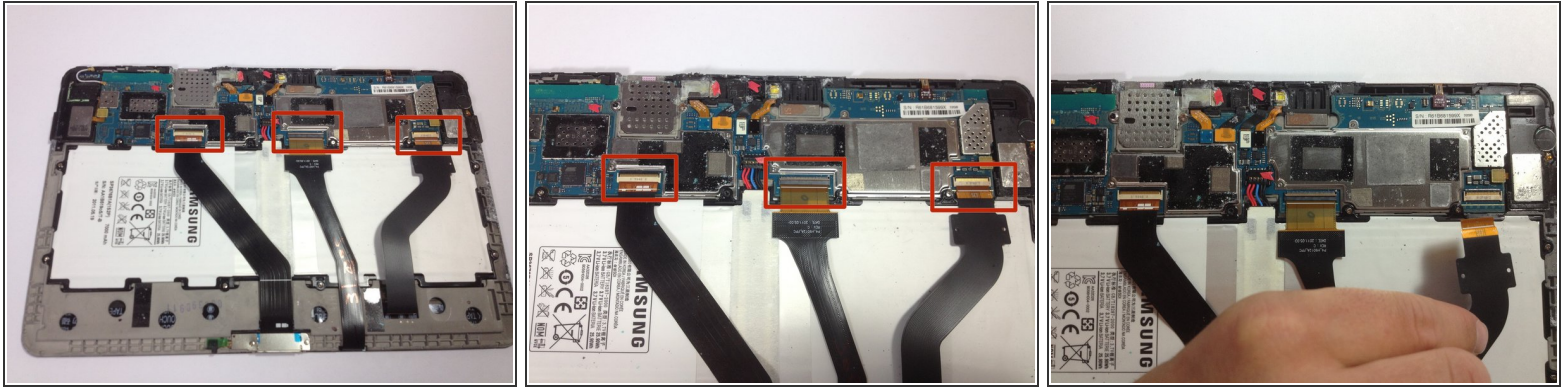
- Start in the middle of the left side and insert a plastic opening tool between the rear panel and the front panel assembly.
 - Carefully run the plastic opening tool along the left and top edge to pry the rear panel away from the rest of the device.
 - ⓘ Place opening picks along the side you have already pried open to keep the back panel detached from the rest of the device.
- ⚠ Be sure to work carefully, as prying too firmly can crack the screen.

Step 3



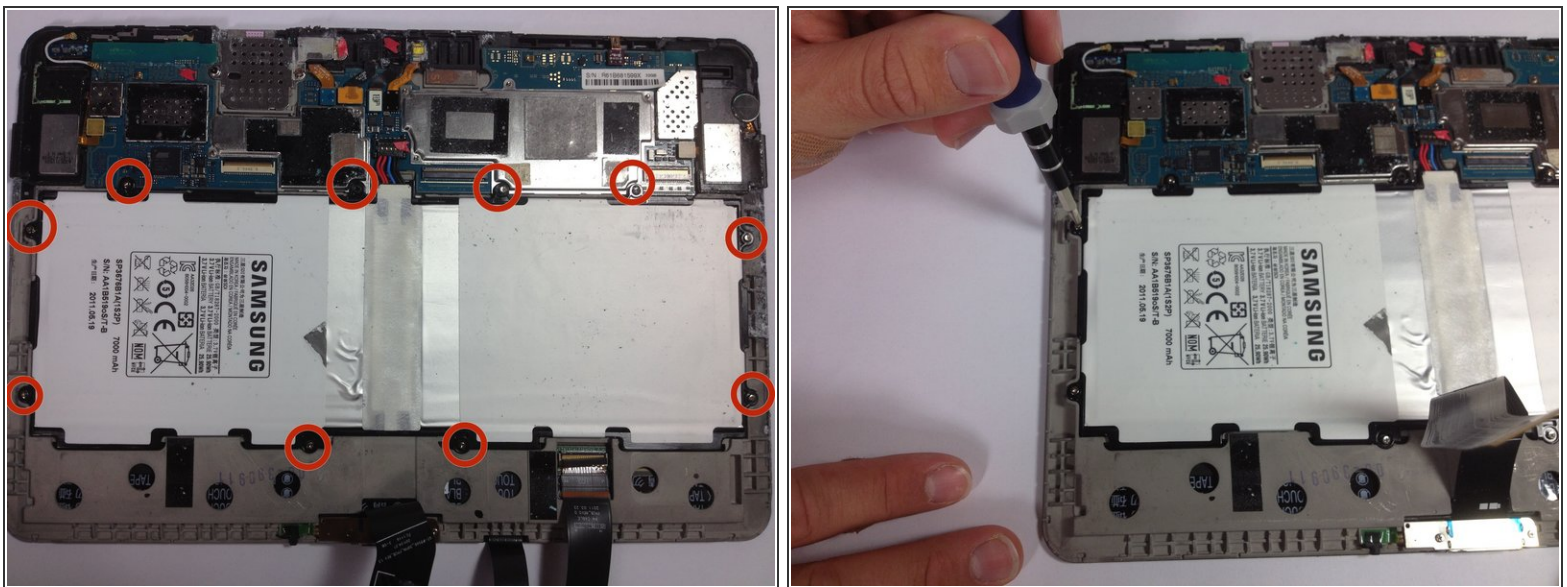
- Using the plastic opening tools, continue to carefully run along the right and bottom edge, and then lift the screen from the back panel.

Step 4 — Battery



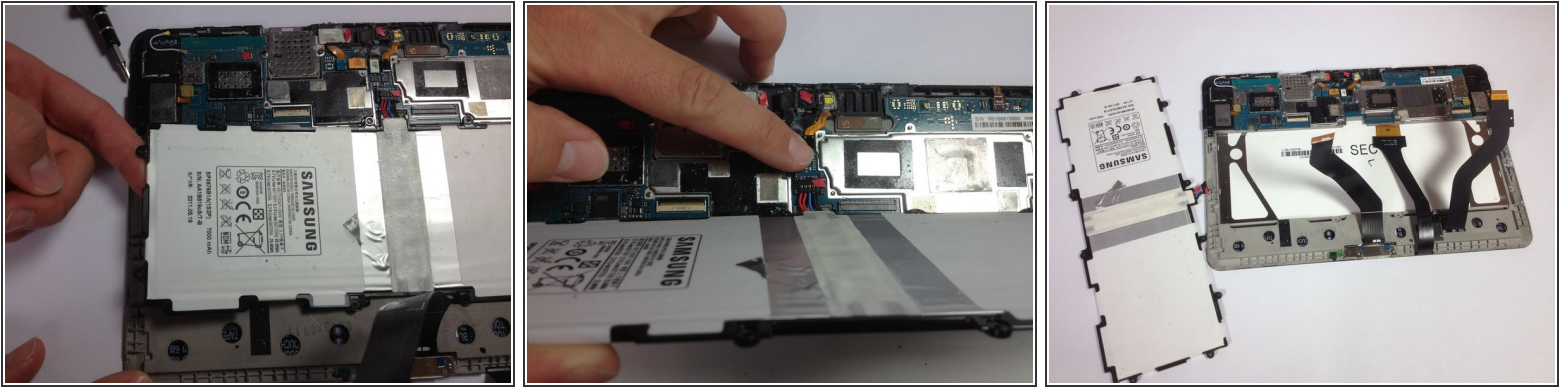
- Flip up the retaining flaps on the ZIF connectors that secure the three large ribbon cables.
- Carefully pull the three ribbon cables from their sockets on the motherboard.

Step 5



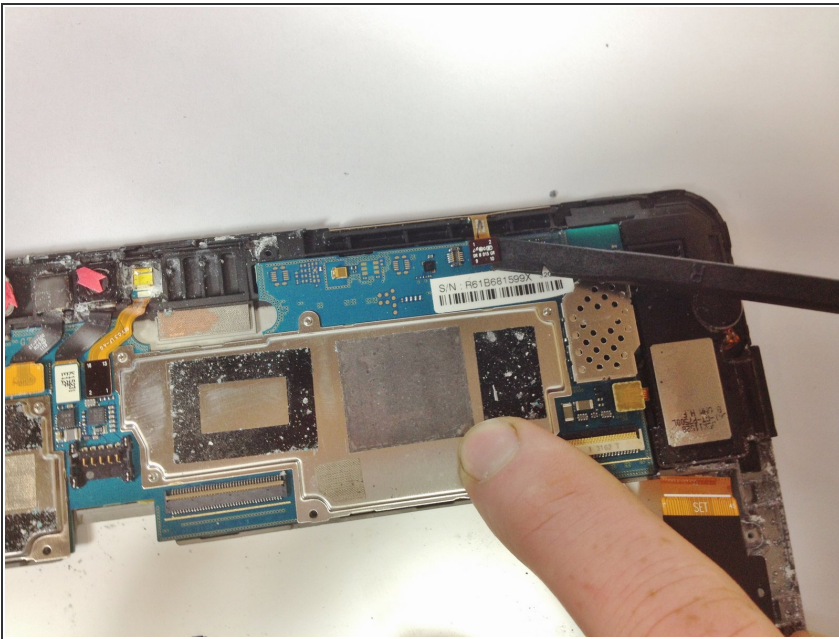
- Remove the ten 3 mm Phillips #00 screws surrounding the battery.

Step 6



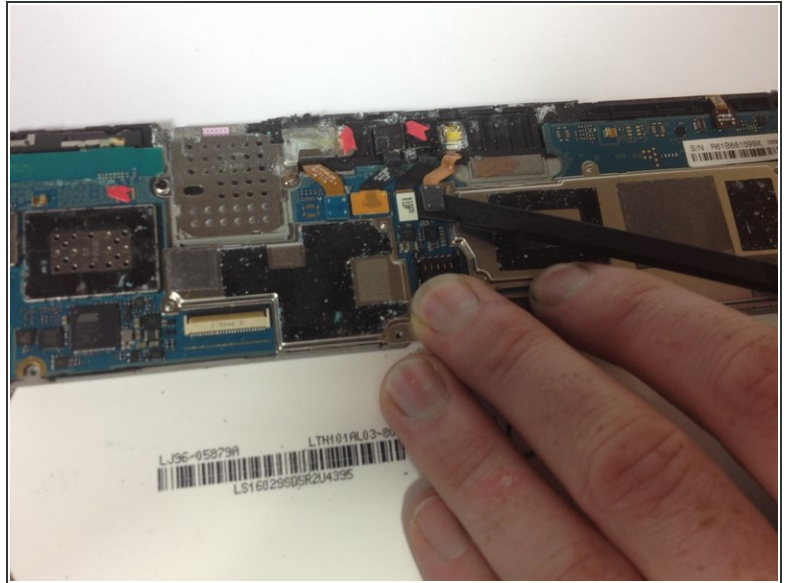
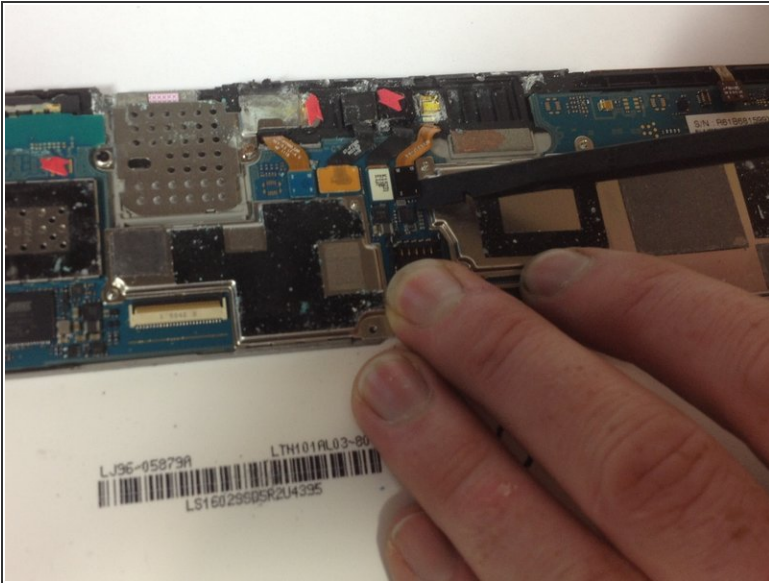
- Lift the edge of the battery up with your finger or a spudger.
- Detach the battery by holding the motherboard down while gently lifting the battery up.

Step 7 — Volume and Power Button



- Hold down the motherboard with your finger and use a spudger to gently pry up the connection for the volume keys and power key.

Step 8 — Flash and Rear Camera Connection



- Using the flat end of a spudger, disconnect the black flash cable connector from the motherboard.
- Disconnect the white rear-facing camera connector.

Step 9 — Front Camera, Micro SD card/headphone Connection



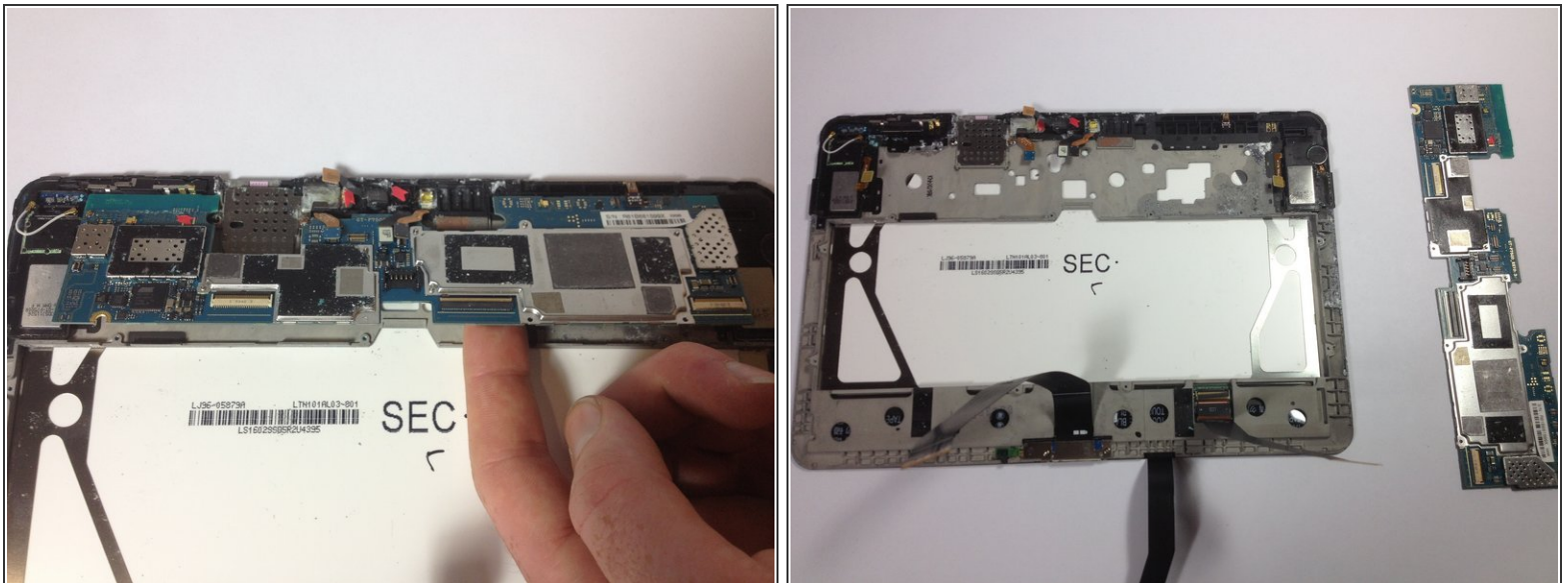
- Use the flat end of a spudger to disconnect the orange front-facing camera connector.
- Disconnect the blue Micro SD card/headphone jack connector from its socket on the motherboard.

Step 10 — Speakers and Antenna Connection



- Using the flat end of a spudger, disconnect the orange speaker connectors for the left and right speakers.
- Disconnect the gold antenna cable connector from its socket on the motherboard.

Step 11 — Motherboard Removal



- Lifting from the bottom edge, gently remove the motherboard.

To reassemble your device, follow these instructions in reverse order.