



Blackberry Curve 9300 Keyboard Replacement

This guide is designed to help consumers...

Written By: Rory Stothers



INTRODUCTION

This guide is designed to help consumers replace their Blackberry Curve 9300 keyboard.

TOOLS:

[T6 Torx Screwdriver](#) (1)

[iFixit Opening Tool](#) (1)

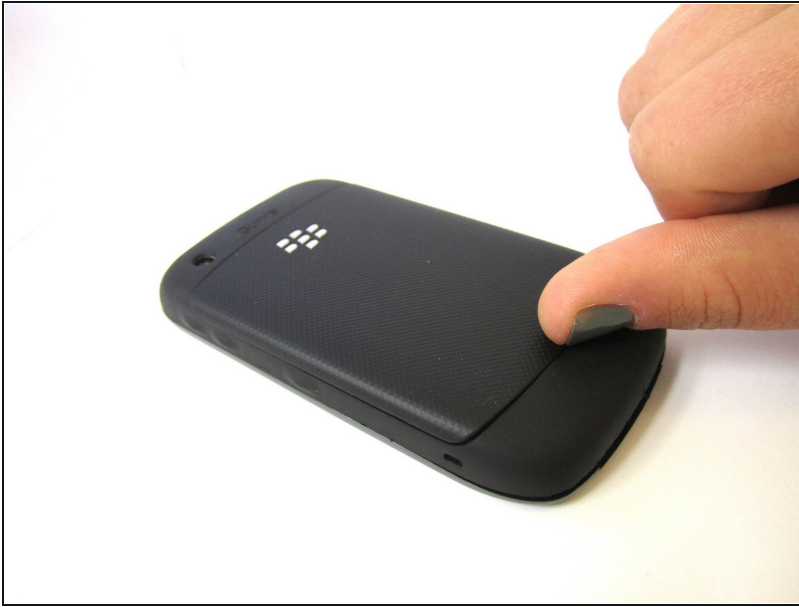
[Tweezers](#) (1)

Step 1 — Battery



- Place your Blackberry face down in front of you.

Step 2



- Locate the indent on the bottom of the back cover.
- Use your fingernail to lift and remove the back cover.

Step 3



- From the top, use your fingernail to lift and remove the battery.

Step 4 — Keyboard



- Use the T6 Torx screwdriver to unscrew the two 5mm screws highlighted.

Step 5



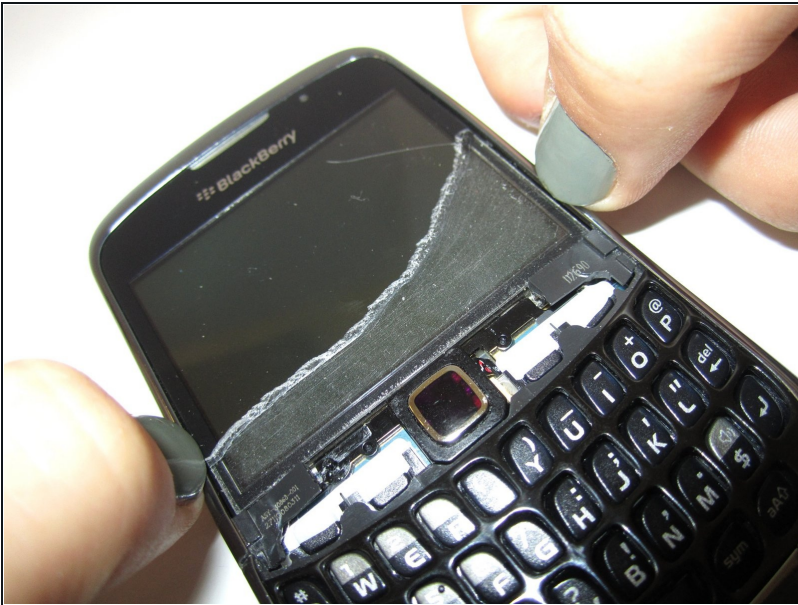
- Place the phone face up and use [tweezers](#) to securely grip and lift the screen upwards.

Step 6



- Use a plastic opening tool to lift the bottom edge of the front cover.

Step 7



- Use your nails to unclip the sides of the frame from the phone.

Step 8



- Lift and remove the frame.

Step 9



- Lift and remove the keyboard.

To reassemble your device, follow these instructions in reverse order.