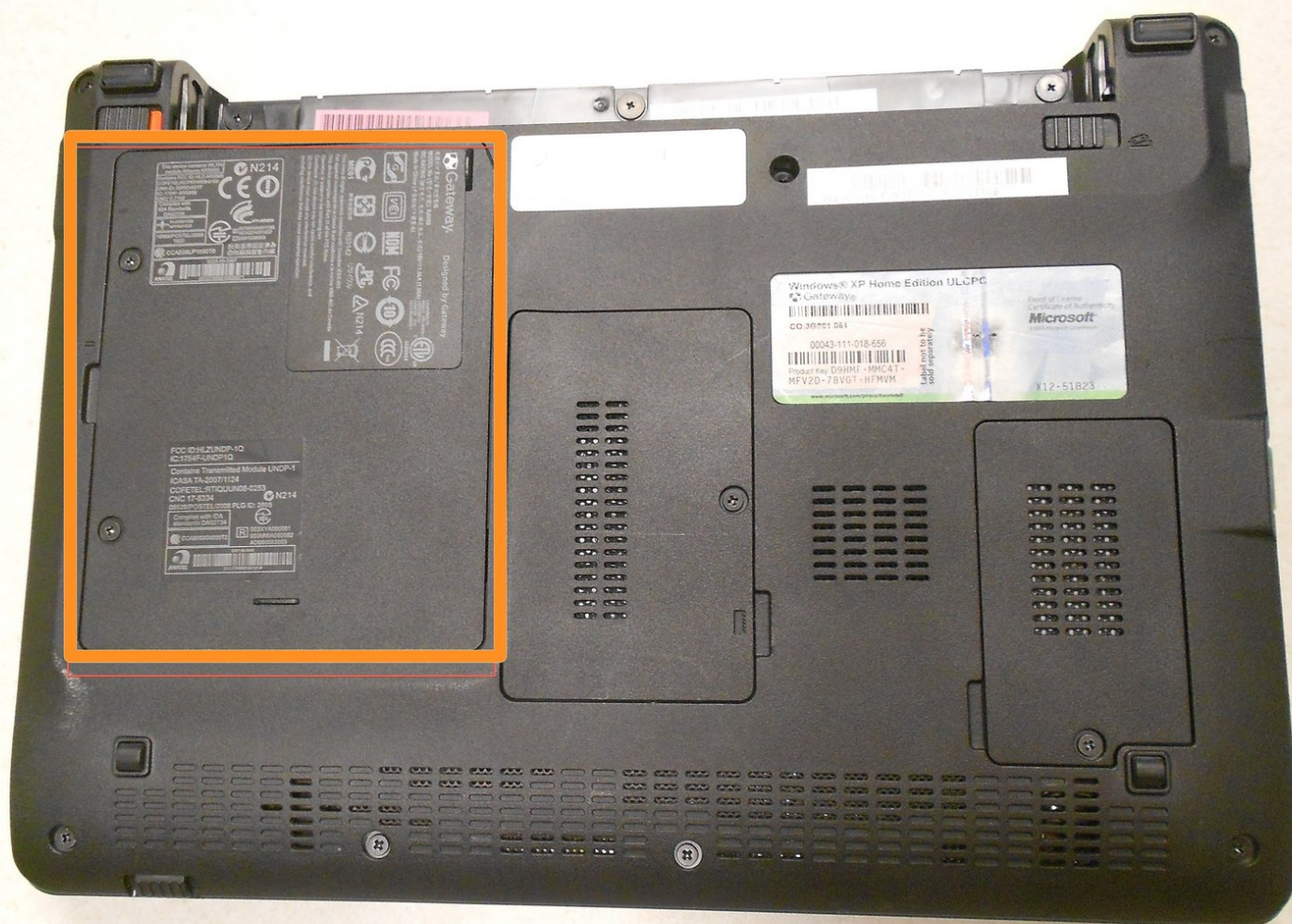




Gateway KAV60 LT2016U Hard Drive Replacement

Gateway KAV60 LT2016U hard drive replacement.

Written By: Lydia Benjock



INTRODUCTION

With a Phillips #0 screwdriver, the hard drive can easily be replaced.



TOOLS:

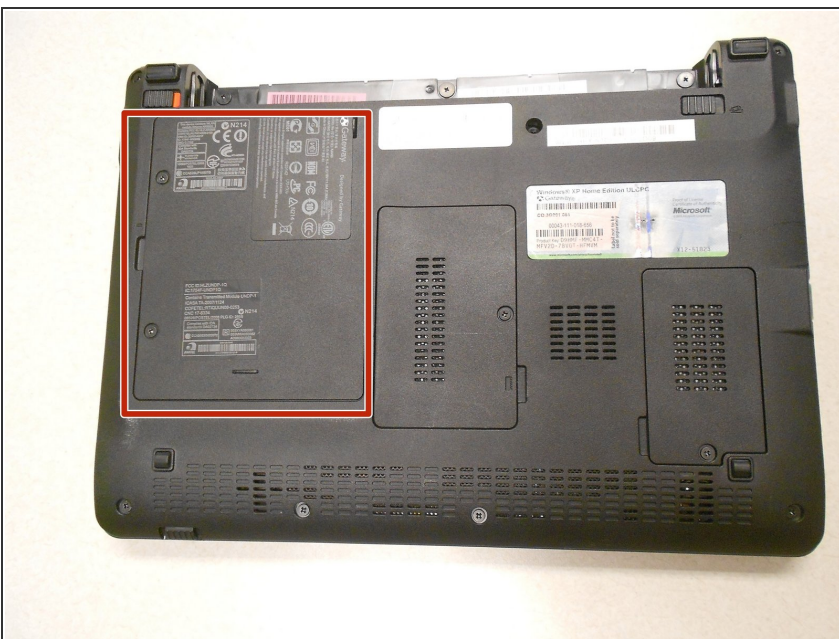
- [Phillips #0 Screwdriver](#) (1)
 - [iFixit Opening Tools](#) (1)
-

Step 1 — Battery



- Unlock the tab located in the top left corner of the netbook.
 - The red tab indicated that the battery has been properly unlocked.
 - Remove the battery.
- i** When working with electronics, it is always wise to remove the power source before taking the device apart.

Step 2 — Hard Drive



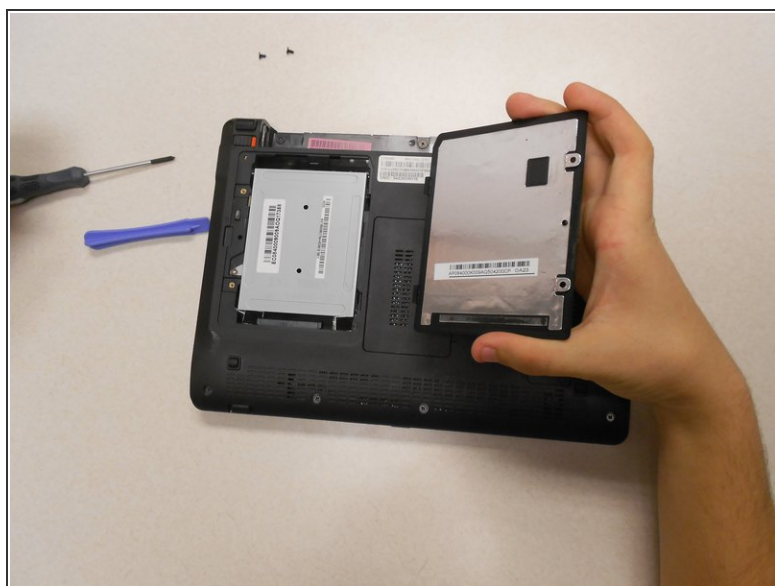
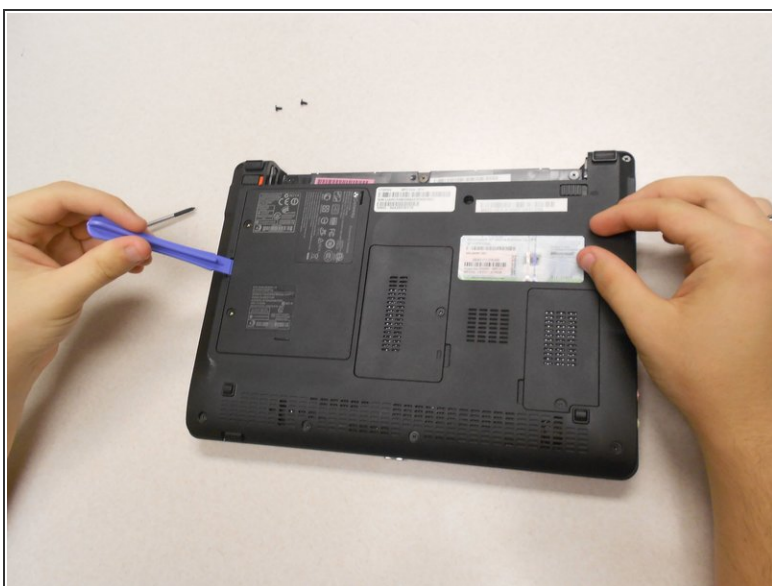
- The hard drive is located under this cover.

Step 3



- Remove the two (2) 5mm screws holding the cover down using the Phillips #0 screwdriver.

Step 4



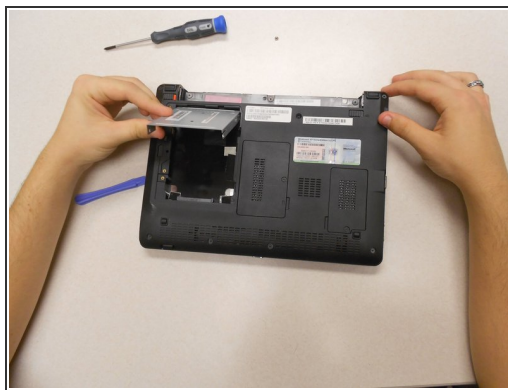
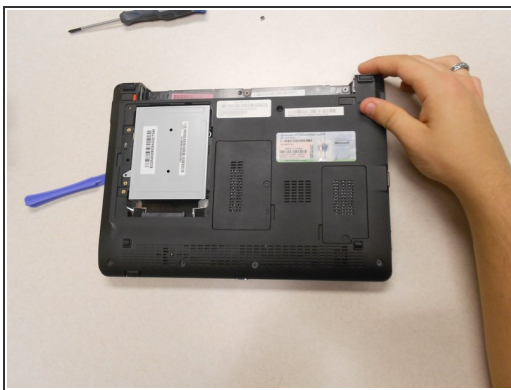
- Use a plastic opening tool to lift the cover.

Step 5



- Using a Phillips #0 screwdriver, remove a third 5mm screw that holds the second cover that is directly protecting the hard drive.

Step 6



- Slide the silver cover up; the hole on the cover and the hole for the screw will no longer match up.
- Lift the silver cover; this will expose the hard drive.

To reassemble your device, follow these instructions in reverse order.