



# Samsung TFT Color YP-T7J The Screen Replacement

This guide will display how to replace the screen of your MP3 player.

Written By: Jason Farr





## TOOLS:

- [iFixit Opening Tools](#) (1)
- [Phillips #0 Screwdriver](#) (1)



## PARTS:

- [New 1.2" TFT Color LCD Screen](#) (1)

## Step 1 — The Back Cover



- Remove the 2 screws on the back cover using a Phillips head #0 screwdriver.

## Step 2



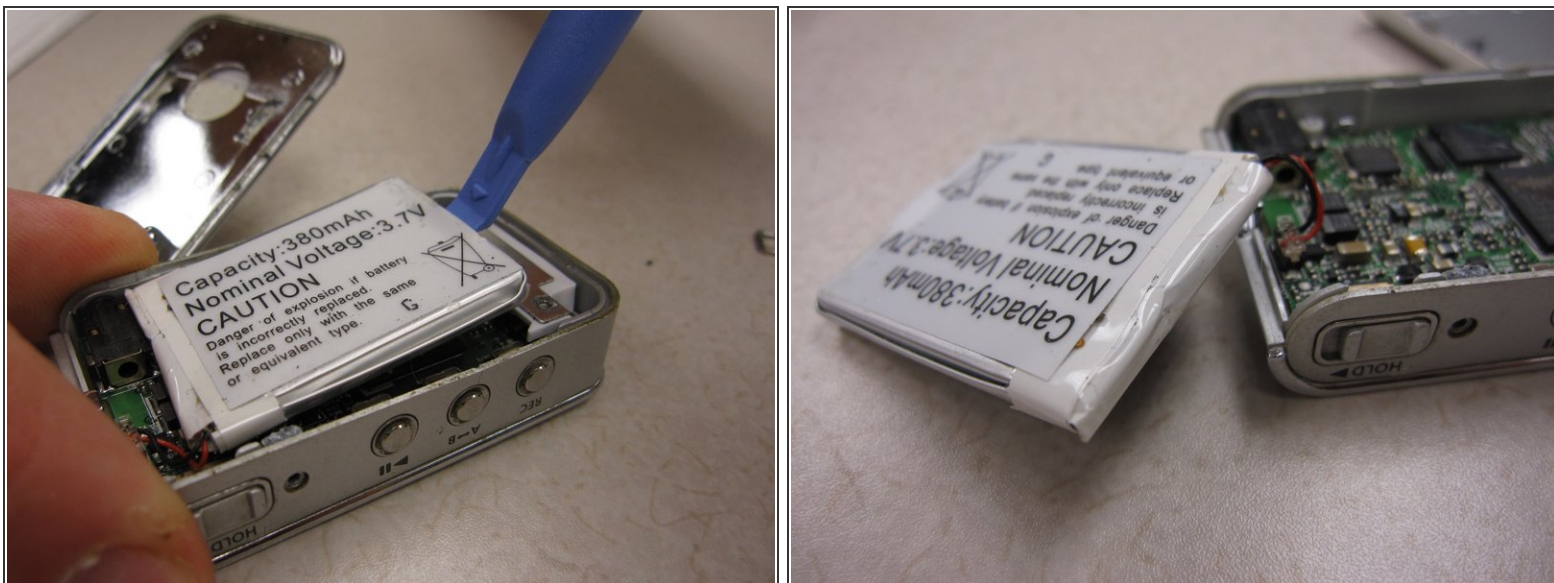
- Remove the screw on each side of the device using a Phillips head screwdriver.

## Step 3



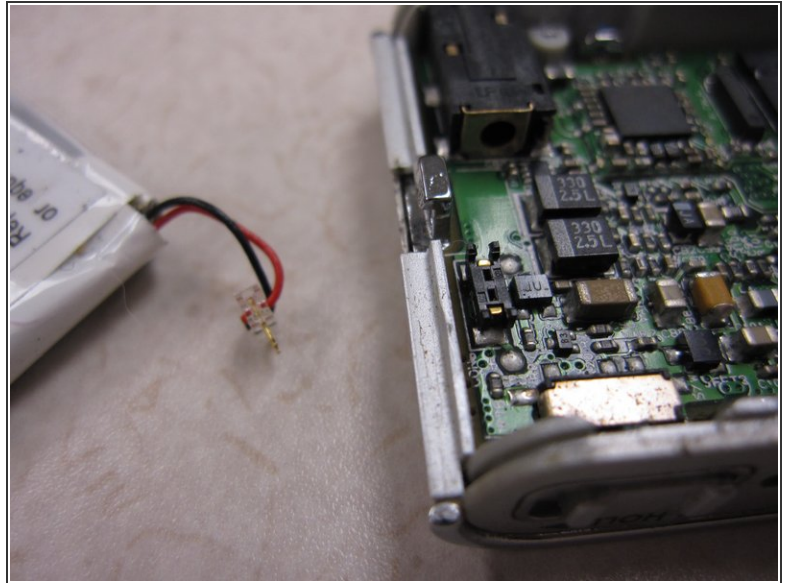
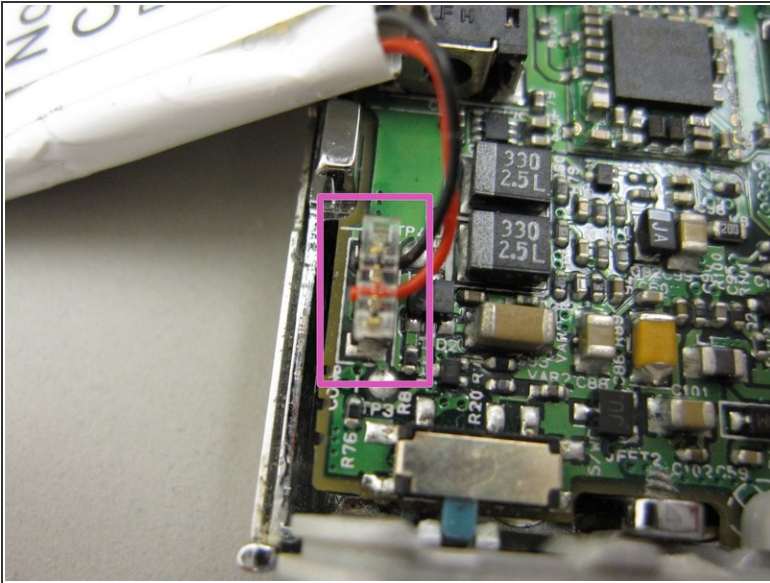
- Using the plastic opening kit, place the prying end of the kit into the opening created by removing the screws.
- Gently pry open the back cover. Insert the plastic opening tool in between the cover joints.

## Step 4 — The Battery



- Once the back cover has been removed the battery will be visible.
  - Pry the battery from the device.
- ⓘ NOTE: The battery should still be connected to the device

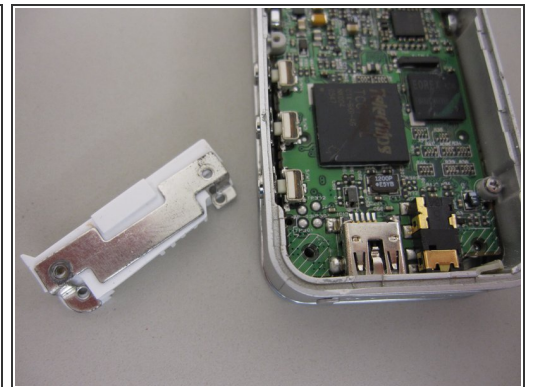
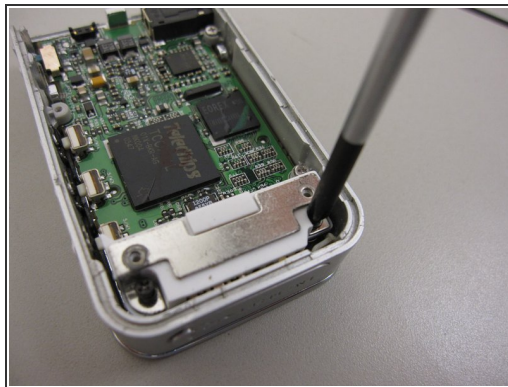
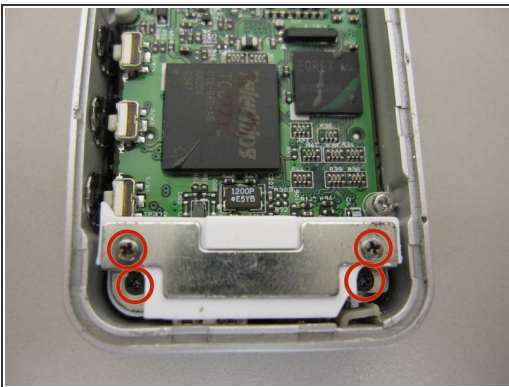
## Step 5



- Unplug the battery connecting cables.

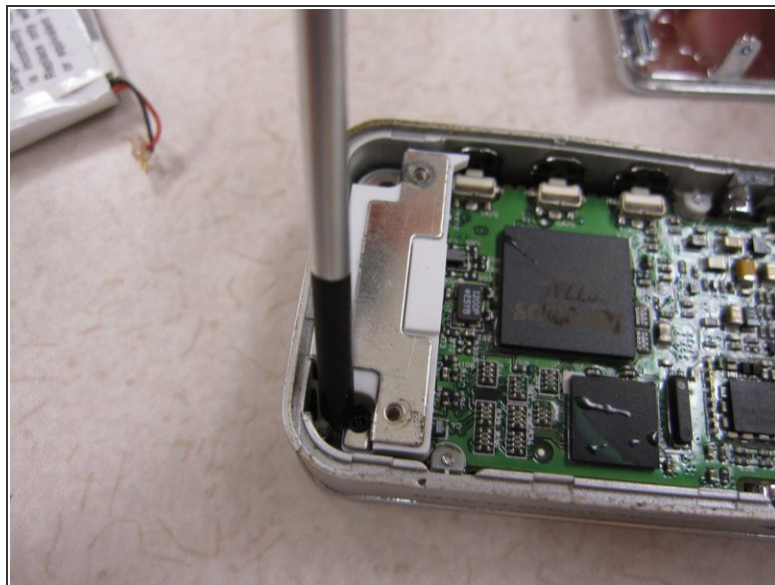
ⓘ NOTE: The battery now should be free from all connections to the device.

## Step 6 — Disassembling Samsung TFT Color YP-T7J USB Connector Dock



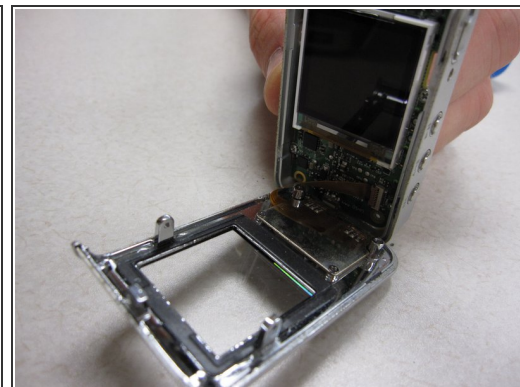
- Once the battery has been removed you can see the motherboard.
- Unscrew 4 screws on the metal dock using a Phillips head screw driver.
- The USB connector can now be taken off of the device.

## Step 7 — The Front Cover



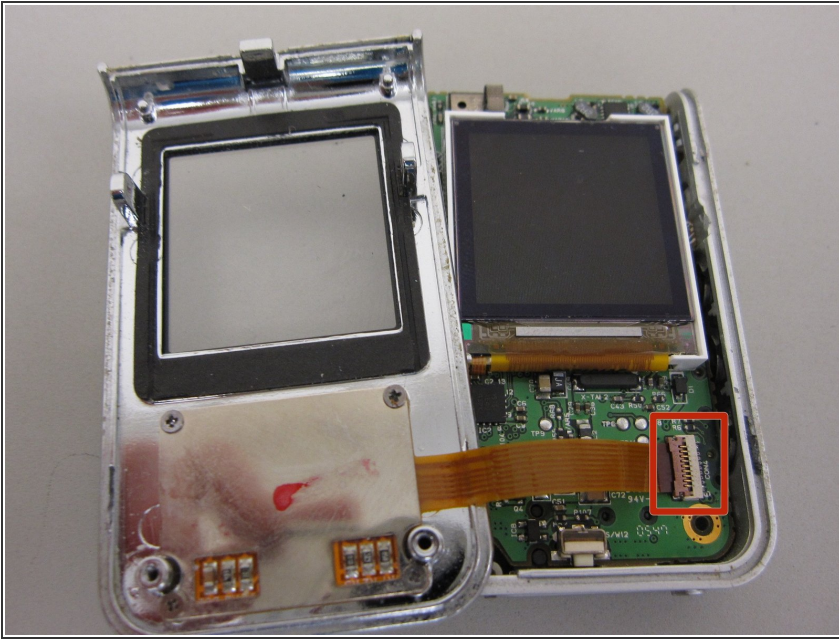
- Using the philips screwdriver, remove the two screws on the mother board.

## Step 8



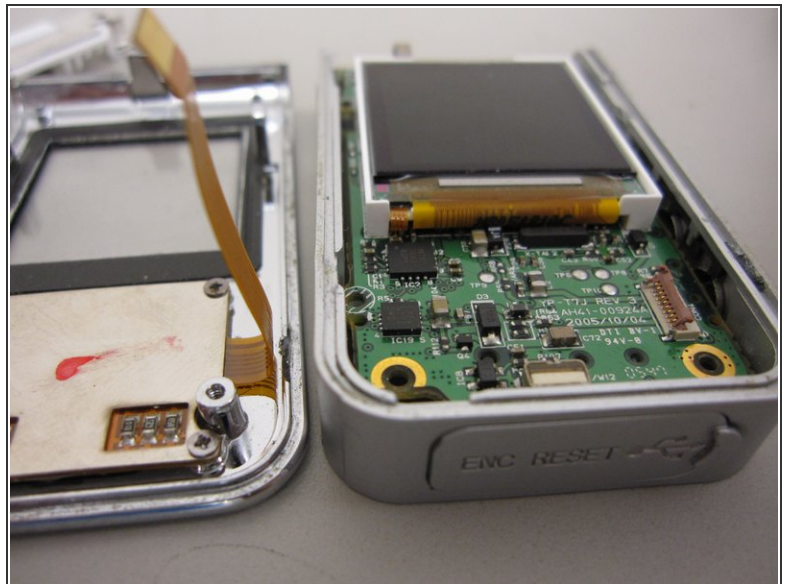
- Place the pry tool in-between the front cover and mother board.
- Gently separate the front cover.

## Step 9



- After opening the front cover you will see and electric ribbon connecting the buttons to the mother board.

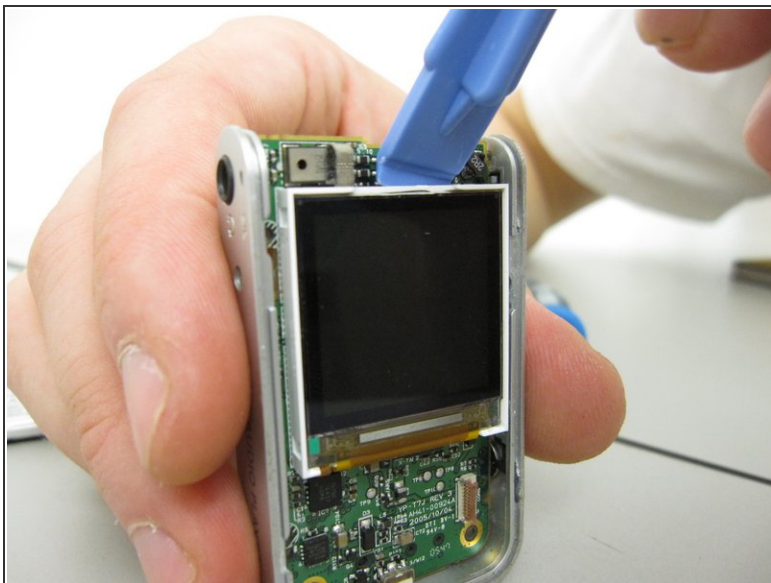
## Step 10



**⚠ CAUTION:** Do not rip the electric ribbon from the mother board.

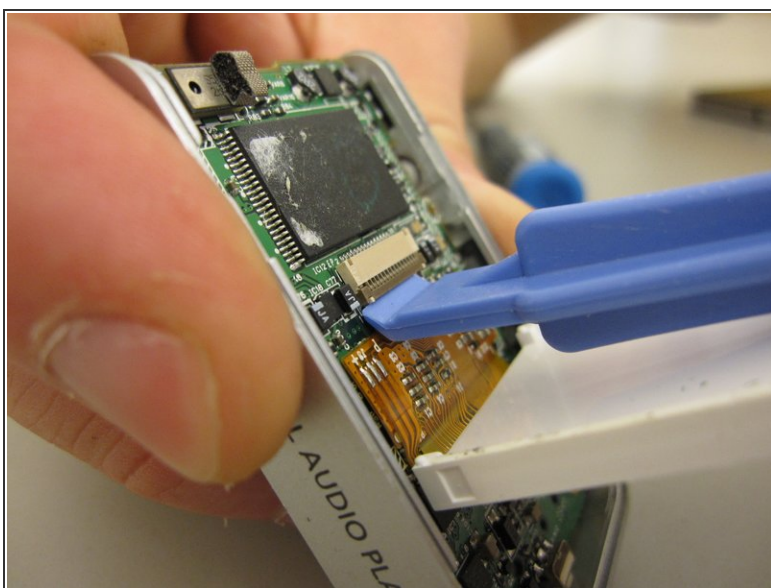
- Carefully flip up the plastic lip that holds the electric ribbon to the board.

## Step 11 — The Screen



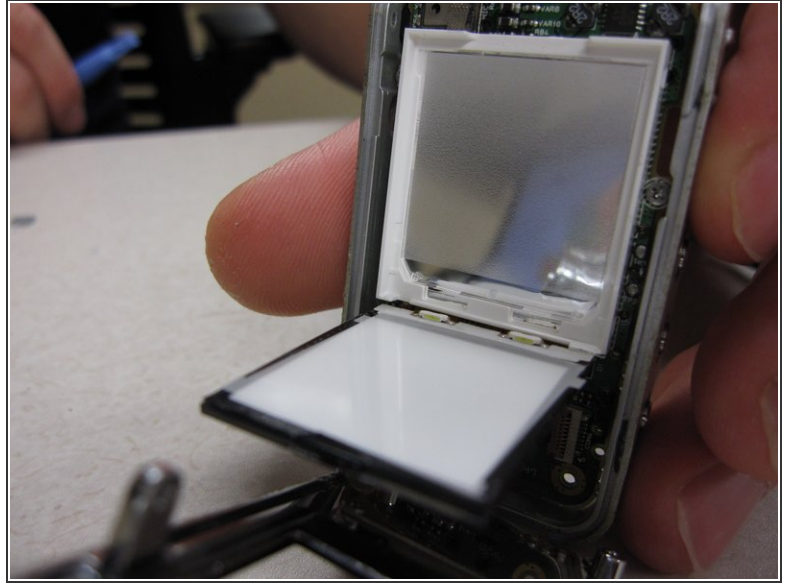
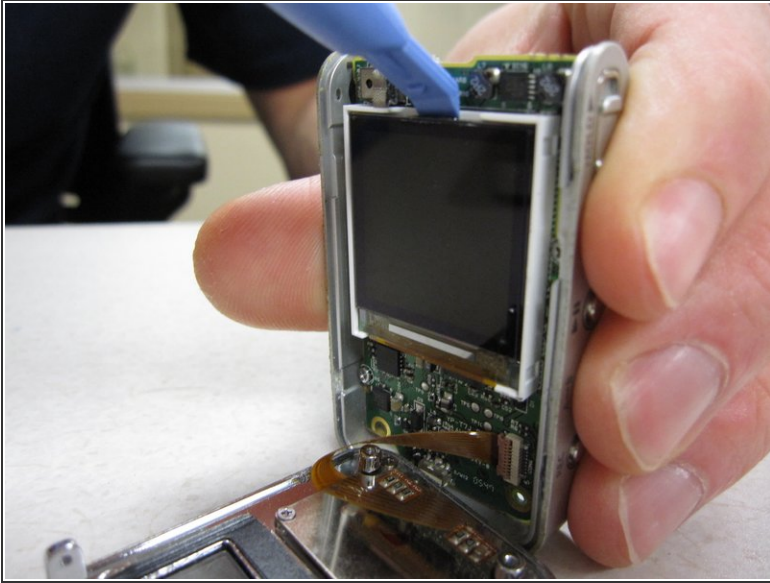
- Place the pry tool between the plastic housing around the LCD screen, and the mother board.
- Gently separate the screen housing from the mother board
- **CAUTION:** The screen is still attached to the mother board via another electric ribbon.

## Step 12



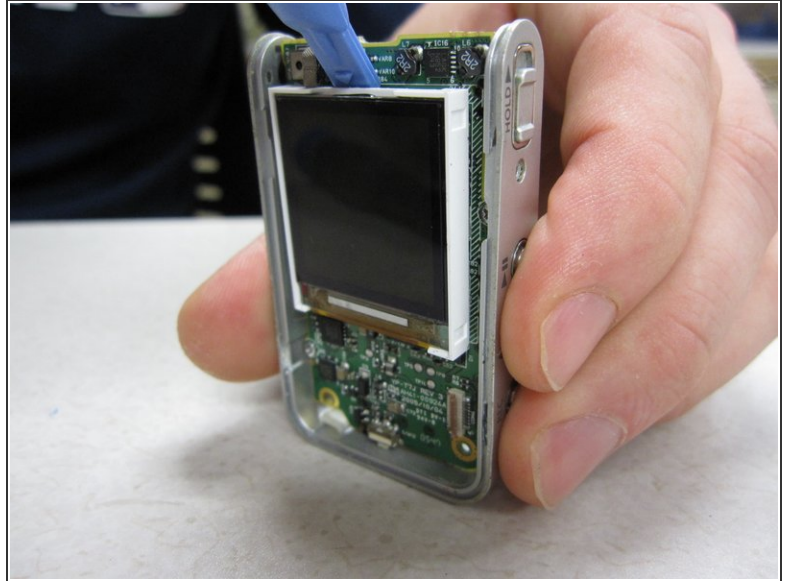
- Using a plastic pry tool to flip up the lip, which connects the electric ribbon to the mother board.

## Step 13



- Place the pry tool between the LCD screen and the white housing unit
- Gently separate the two.

## Step 14



- Insert the new screen into the white unit.
- Connect the LCD screen to the mother board by inserting the electric ribbon into its port, and closing the lip.

To reassemble your device, follow these instructions in reverse order.