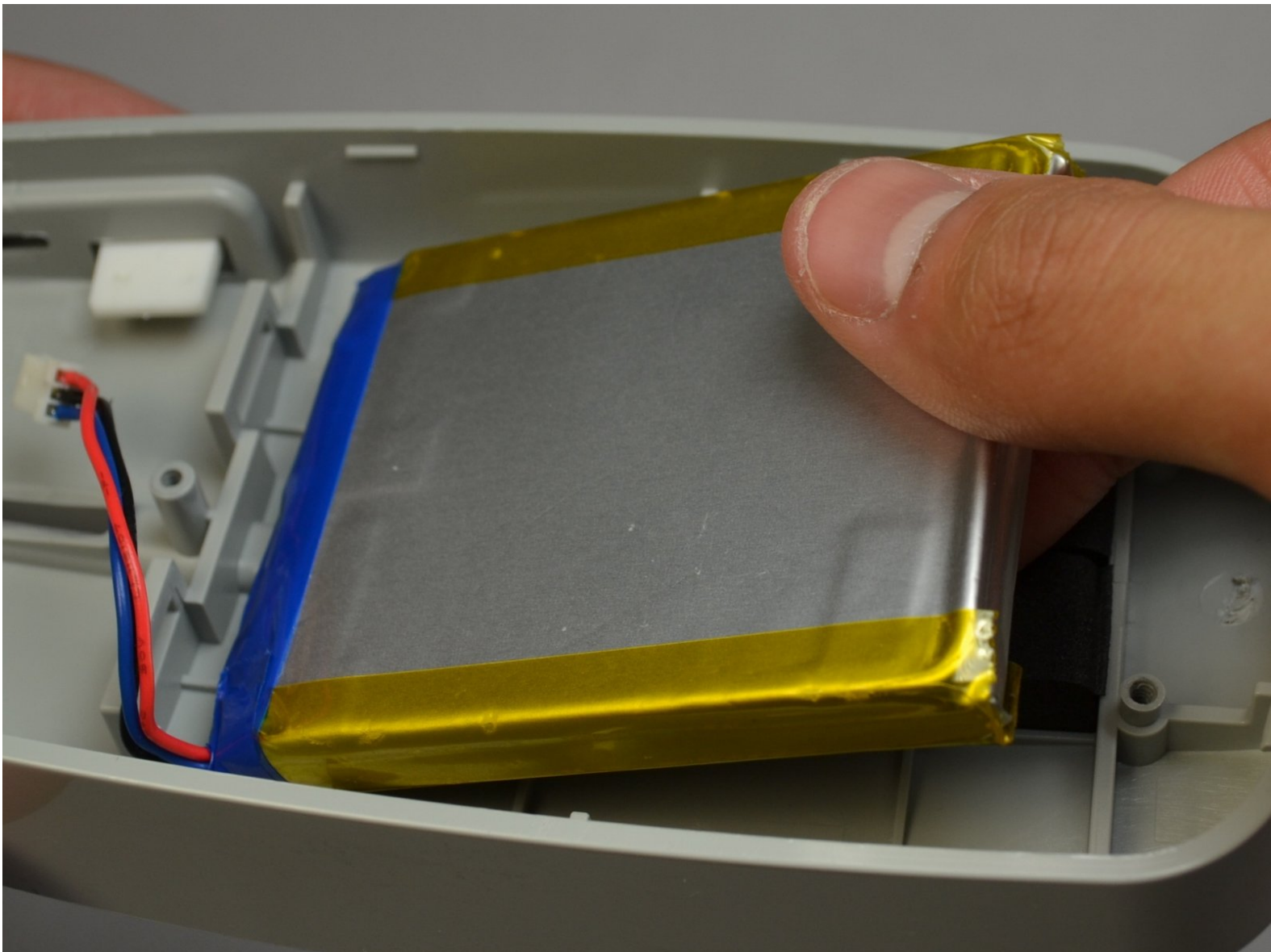




Solio CLASSIC2 Battery Replacement

In this guide, you will learn how to easily change the battery.

Written By: Johnny Tran



INTRODUCTION

The 3.7V/3, 200mAh Li-Poly battery is a key component because it stores the power within the device. If it burns out, it must be replaced.



TOOLS:

- [Phillips #1 Screwdriver](#) (1)
 - [iFixit Opening Tools](#) (1)
-

Step 1 — Disconnecting the Battery



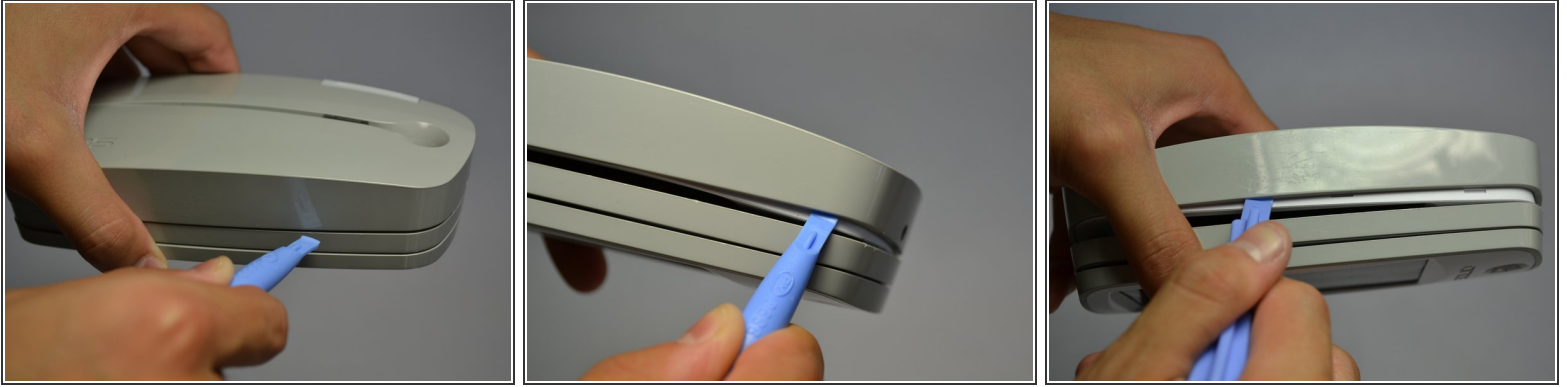
- Turn off the device by pressing on the clear power button behind the device.
- ⓘ To make sure that it is off, make sure the button is not flashing green.

Step 2



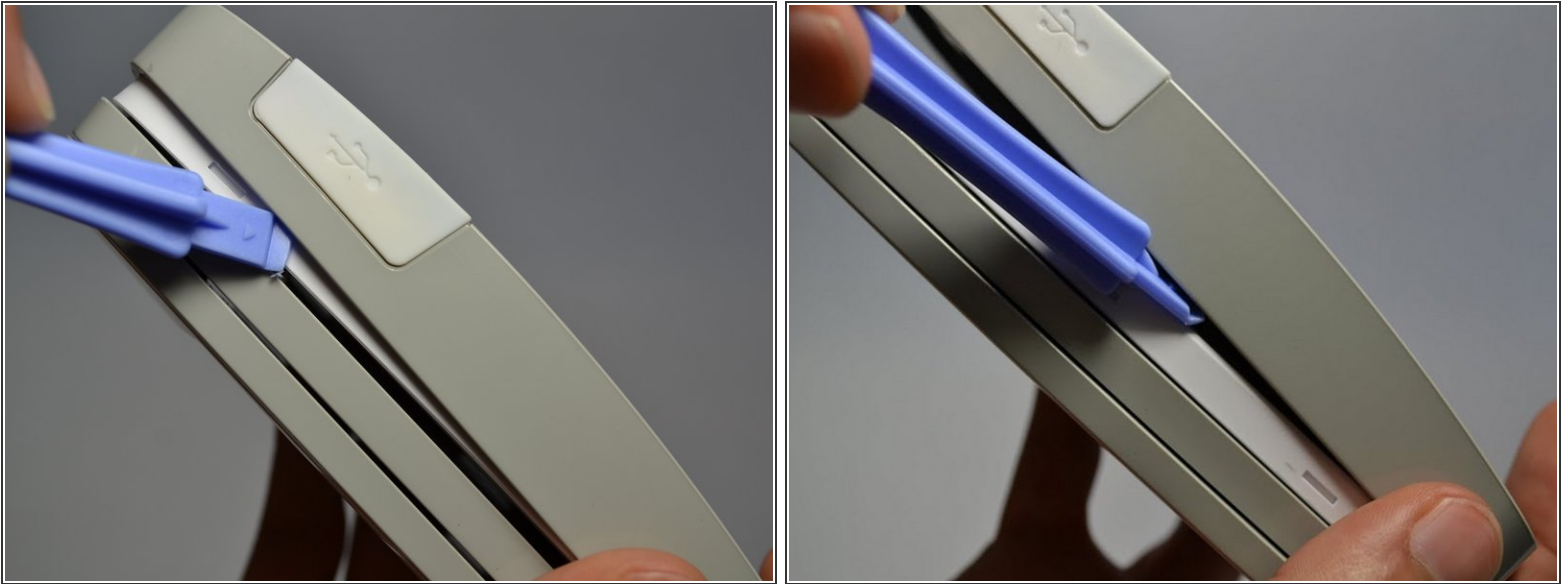
- Using the Phillips #1 screwdriver, remove the 2mm screw located on the bottom of the device, near the hinge.

Step 3



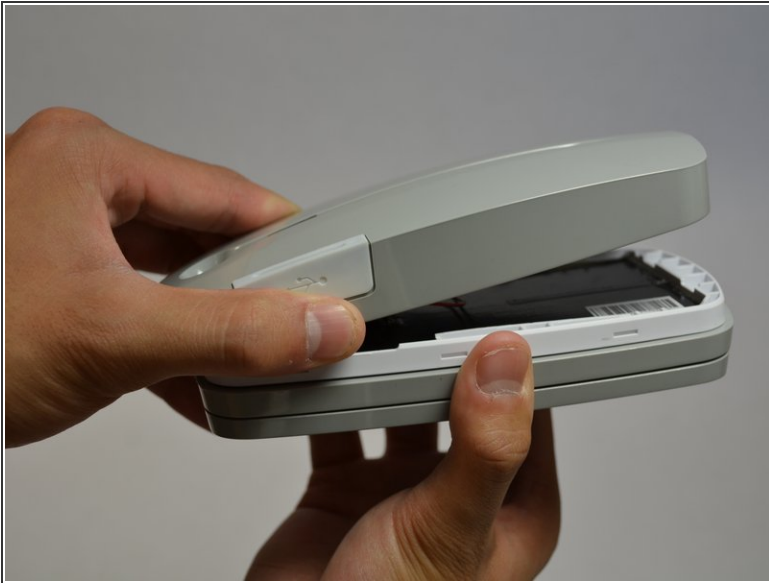
- Using the plastic opening tools, gently pry open the side of the large panel.
- Keeping the tool in, slowly slide the tool along the side of the panel.


Step 4



- Rotate the device 180 degrees.
- ⓘ Make sure the opening on other side of the device does not snap closed.
- Gently slide the plastic opening tool along the side of the panel.

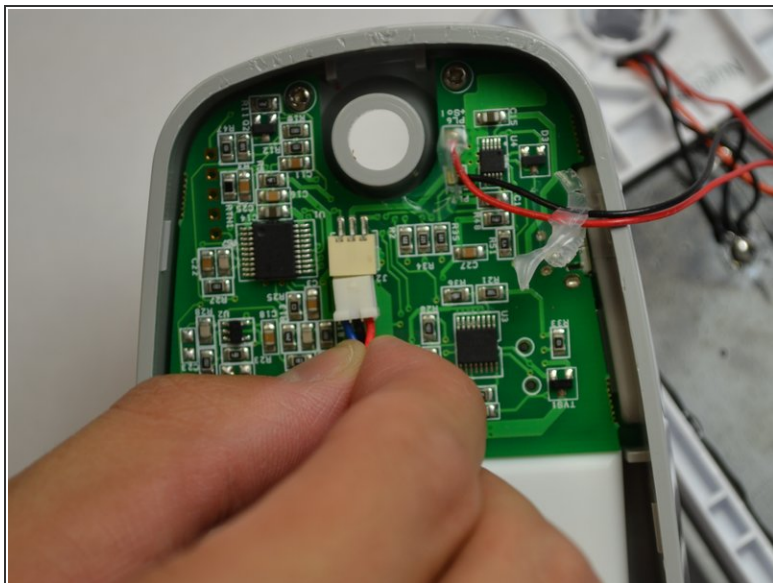
Step 5



 Do not fully pull apart the back panel from the device. Doing so can rip the two red and blue wires attached to the panel.

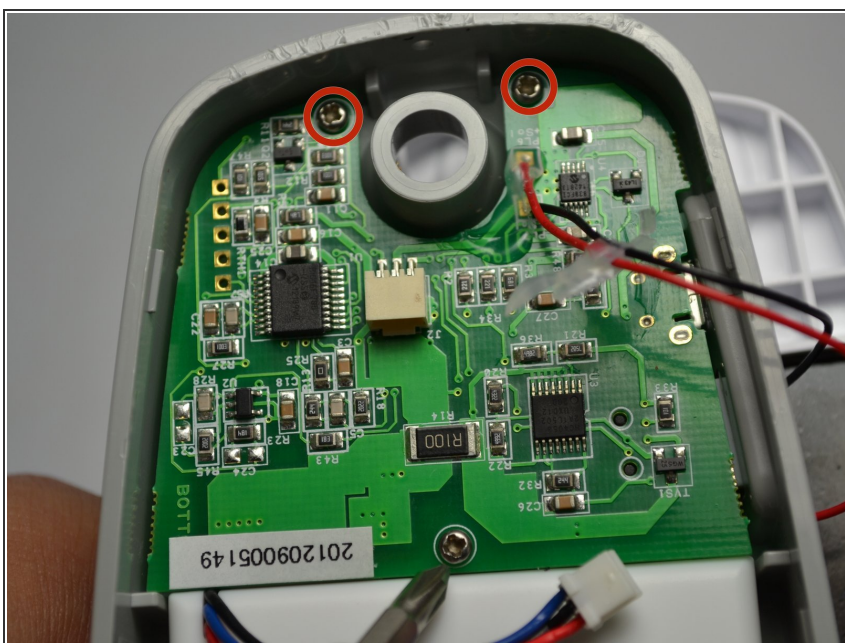
- Using both hands, slowly pull apart the back panel from the rest of the device.
- Gently flip the back panel open so the circuit board faces up and the two panels are side by side.

Step 6



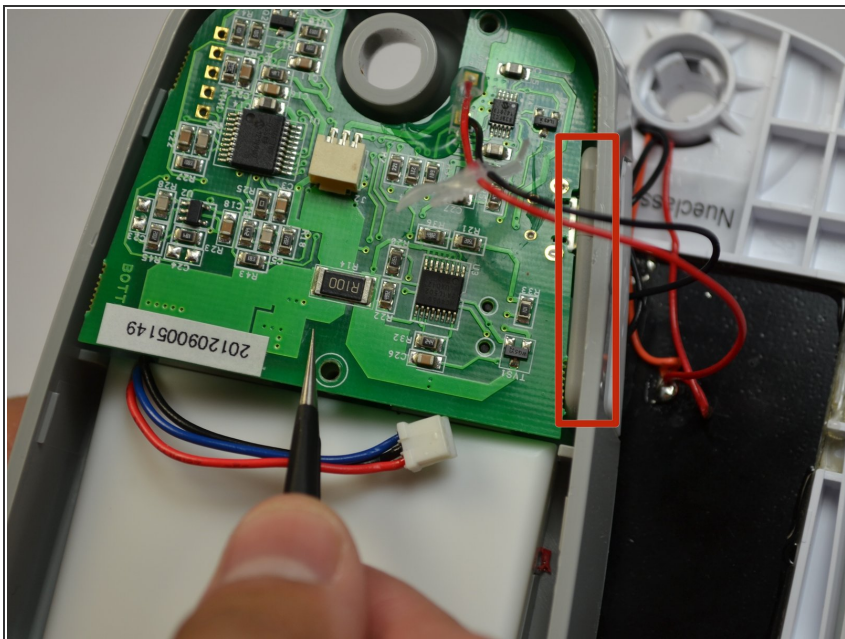
- Softly pinch the red and blue wires close to the white connector.
- To pull the wires out, wiggle them back and forth until the connector is fully out.

Step 7 — Circuit Board



- Unscrew the three 2mm screws holding the circuit board down using a Phillips #1 screwdriver.

Step 8



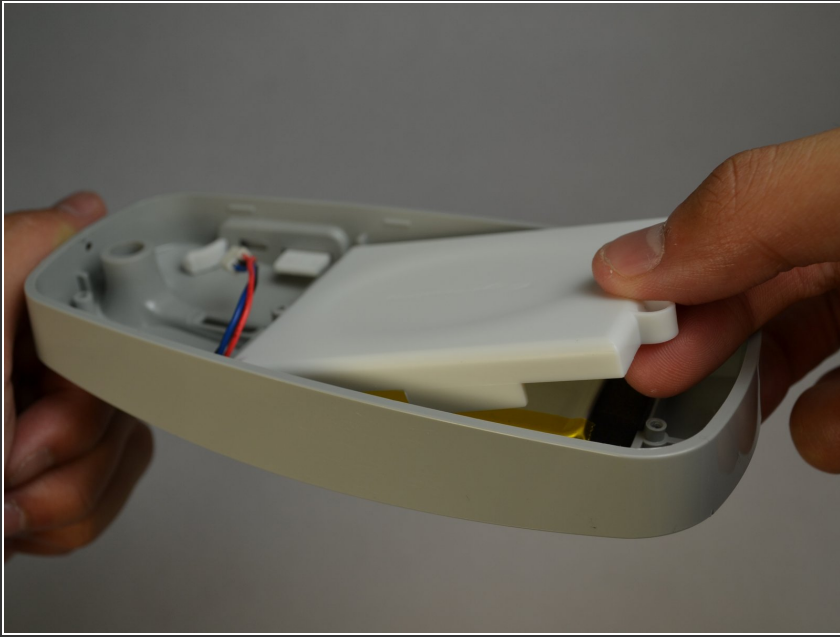
- Make sure the white USB port cover on the side of the device is pulled out or you won't be able to lift the circuit board.
- Gently lift the circuit board out of the device using tweezers.

Step 9 — Battery



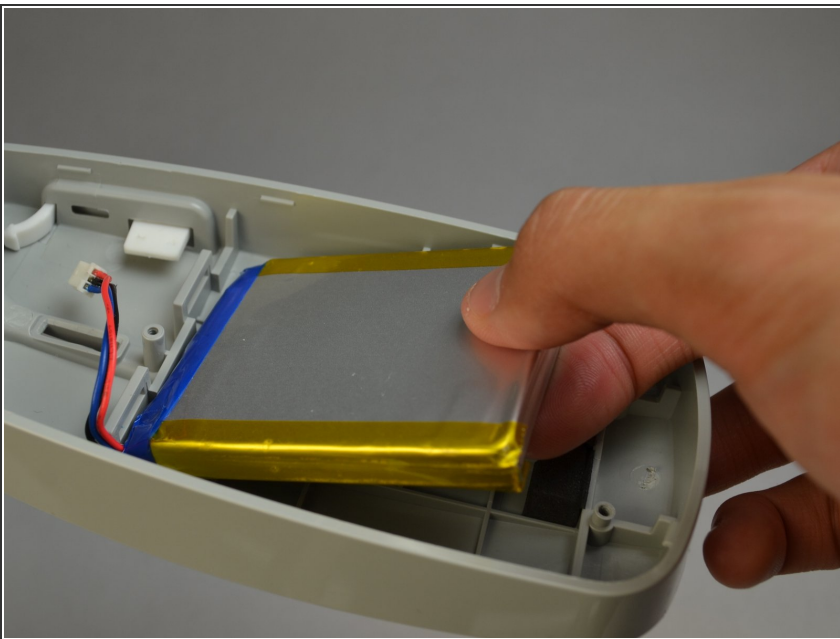
- Remove the two 2mm screws from the battery case.

Step 10



- Gently pull up the battery case out of the tabs and pull the case out.

Step 11



- Gently lift up the battery.

To reassemble your device, follow these instructions in reverse order.