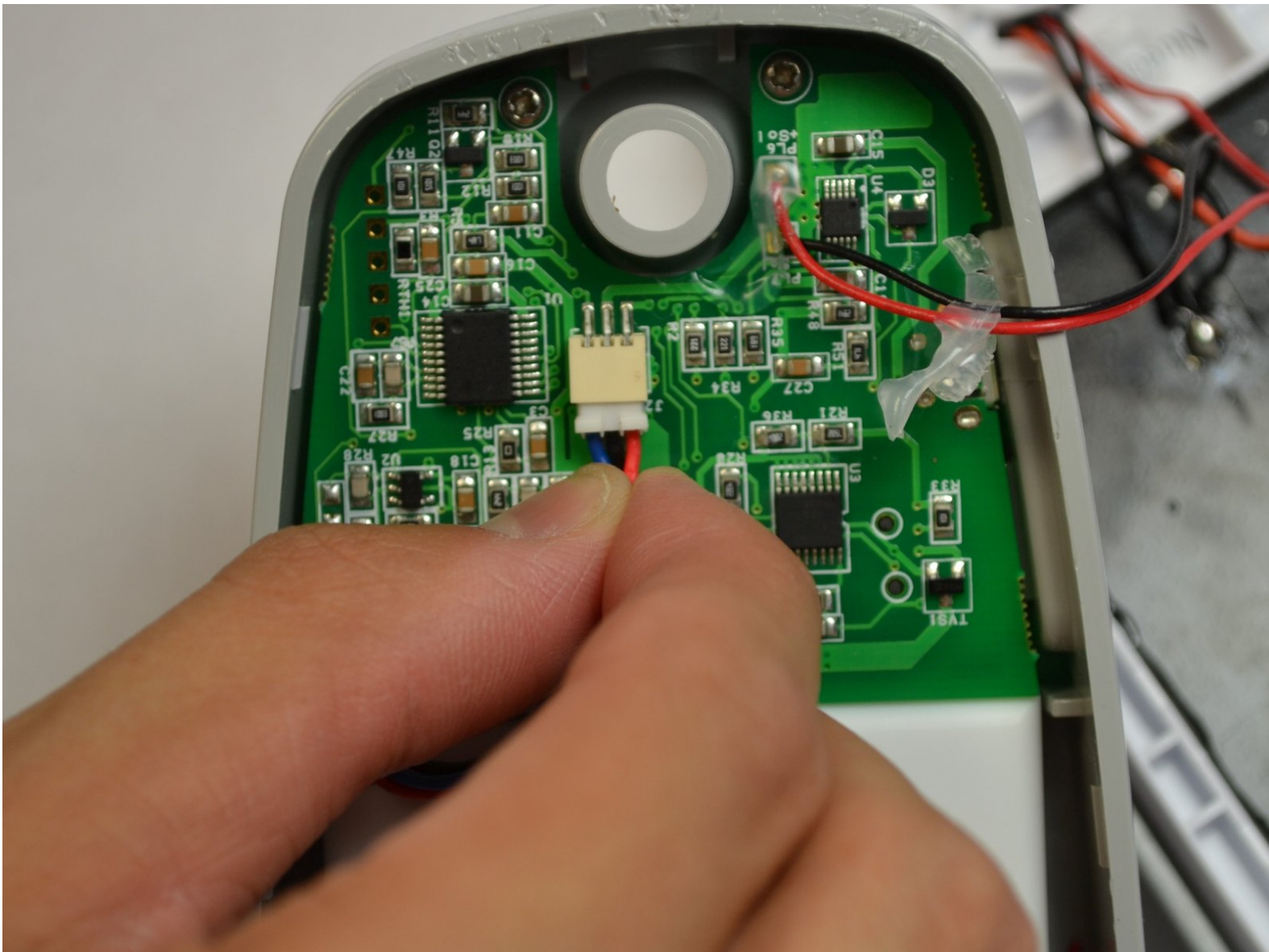




# Solio CLASSIC2 Disconnecting the Battery

Before parts on the device can be replaced, no power can be stored in the device. This is a prerequisite guide.

Written By: Johnny Tran



# INTRODUCTION

Disconnecting the battery is vital when replacing the other parts on the Solio CLASSIC2. This guide will first show how to remove the back panel. Once the back panel is removed, the battery can be removed.



## TOOLS:

- [Phillips #1 Screwdriver](#) (1)
  - [iFixit Opening Tools](#) (1)
-

## Step 1 — Disconnecting the Battery



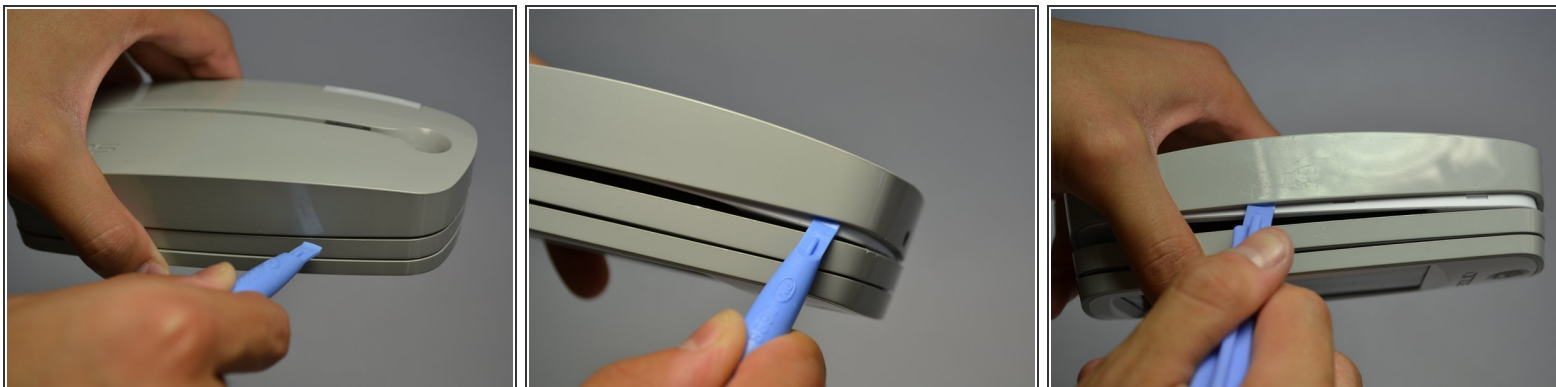
- Turn off the device by pressing on the clear power button behind the device.
- ⓘ To make sure that it is off, make sure the button is not flashing green.

## Step 2



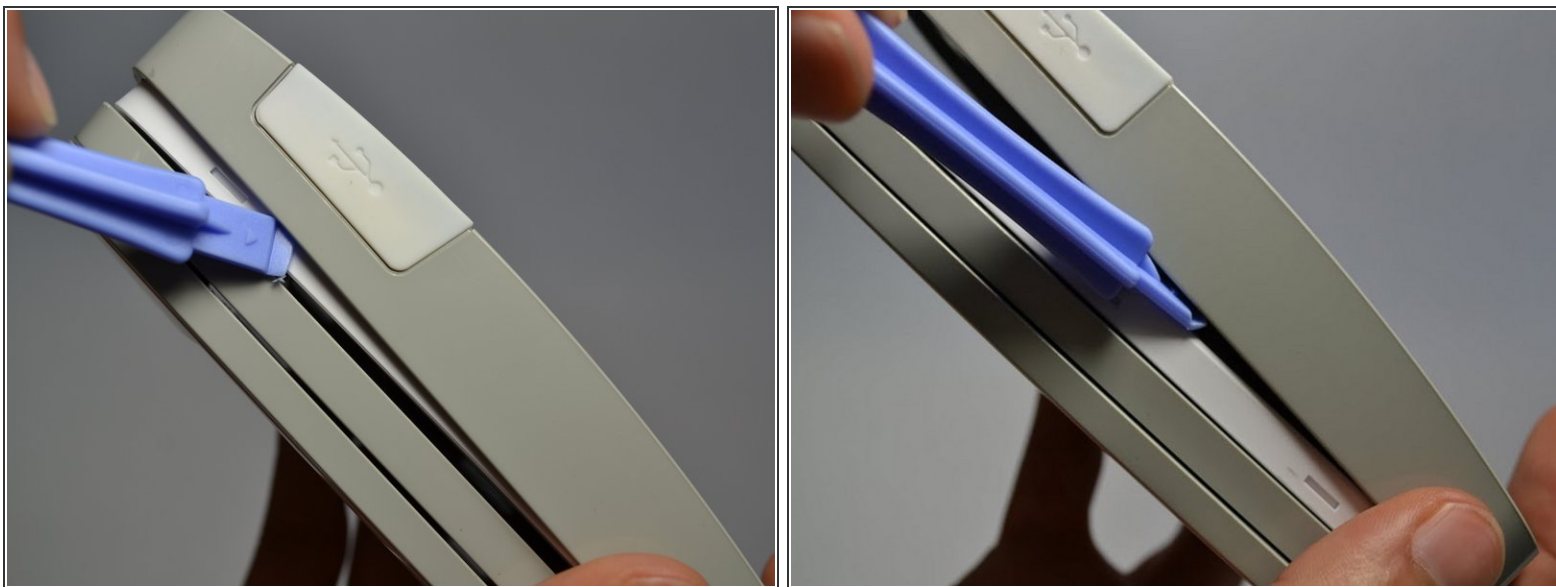
- Using the Phillips #1 screwdriver, remove the 2mm screw located on the bottom of the device, near the hinge.

### Step 3



- Using the plastic opening tools, gently pry open the side of the large panel.
- Keeping the tool in, slowly slide the tool along the side of the panel.

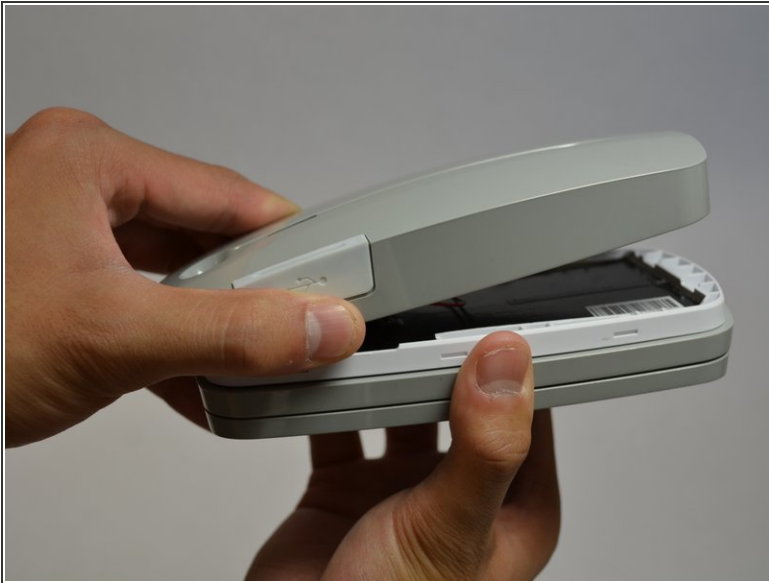
### Step 4




- Rotate the device 180 degrees.
- ⓘ Make sure the opening on other side of the device does not snap closed.
- Gently slide the plastic opening tool along the side of the panel.



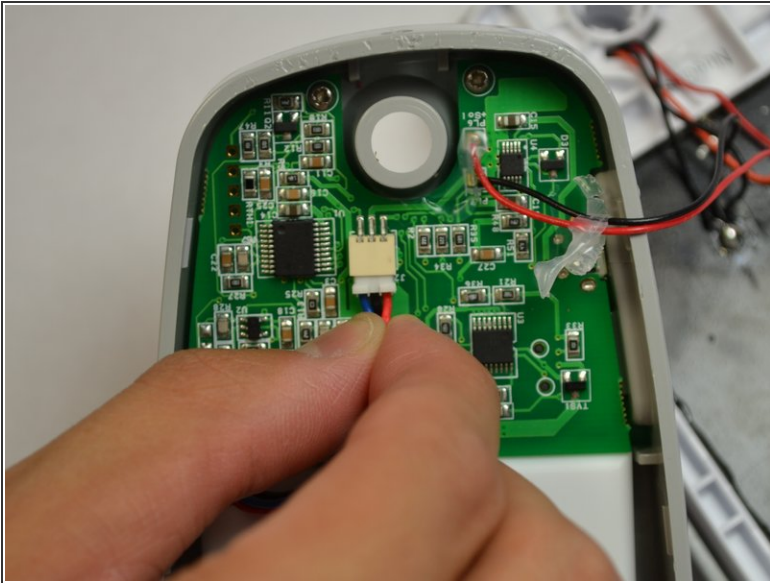
## Step 5



 Do not fully pull apart the back panel from the device. Doing so can rip the two red and blue wires attached to the panel.

- Using both hands, slowly pull apart the back panel from the rest of the device.
- Gently flip the back panel open so the circuit board faces up and the two panels are side by side.

## Step 6



- Softly pinch the red and blue wires close to the white connector.
- To pull the wires out, wiggle them back and forth until the connector is fully out.

To reassemble your device, follow these instructions in reverse order.