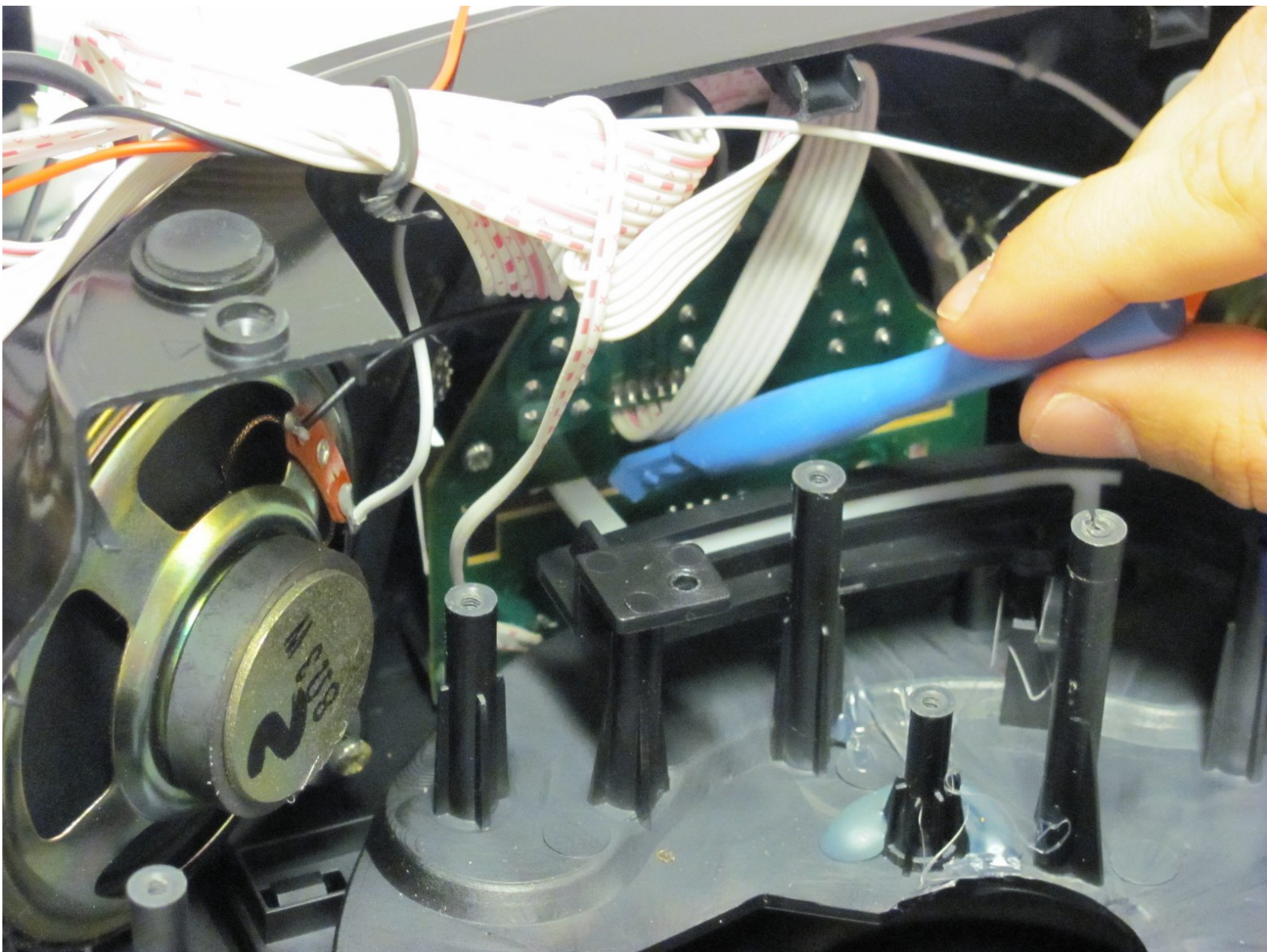




Insignia NS-B2110 Button Replacement

This guide shows how to remove the buttons from the front face of the device. It requires soldering.

Written By: Samuel Randall



INTRODUCTION

If the buttons on the stereo's face or the visual display are not working, you may need to remove them from the device to be replaced. This guide shows how to go about removing the buttons and LED display. This guide requires a knowledge of soldering. If you don't know how, follow this very simple step-by-step [soldering guide](#)



TOOLS:

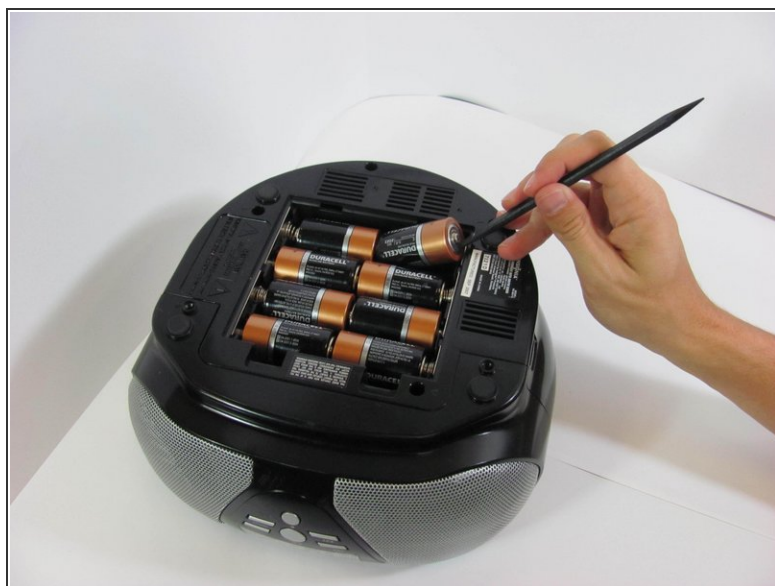
- [Soldering Workstation](#) (1)
 - [Phillips #00 Screwdriver](#) (1)
 - [Spudger](#) (1)
 - [Phillips #2 Screwdriver](#) (1)
 - [iFixit Opening Tools](#) (1)
-

Step 1 — Battery



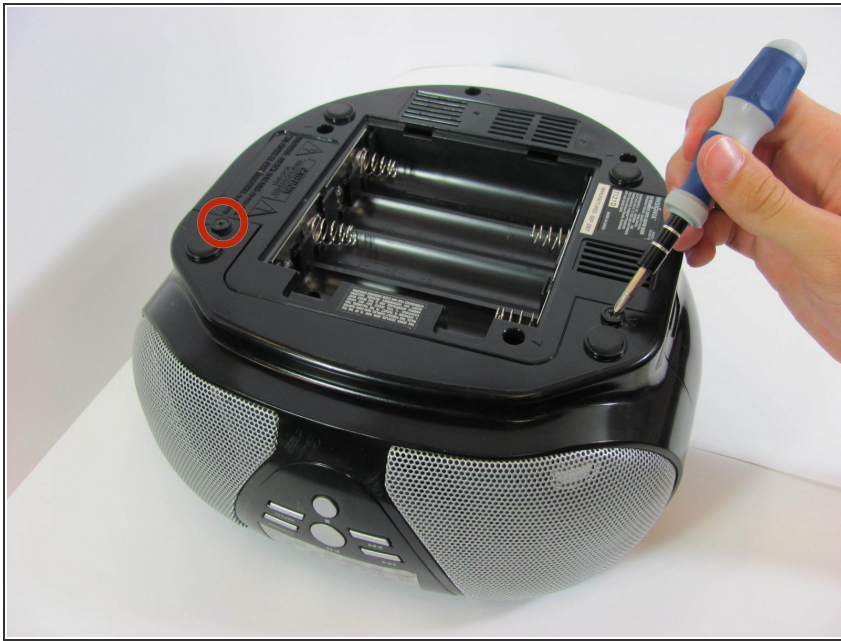
- Flip the stereo so the CD opening is face down.
- With two fingers, pinch the tabs and lift up to open the battery protection cover.

Step 2



- Using a spudger or your fingers, push up against the positive end of the battery. Once it is loose, lift the battery out.
- Repeat until all eight batteries are removed.
- ☑ Make sure the batteries are facing the right direction. If the device does not turn on, you may have the batteries in the opposite orientation.

Step 3 — Bottom Panel



- With a Phillips #2 screwdriver, remove two 2mm screws.

Step 4




- Using a long Phillips #2 screwdriver, remove one 6mm screw located inside the battery compartment.
- Use the same screwdriver to remove four more 6mm screws along the outside of the case.

Step 5

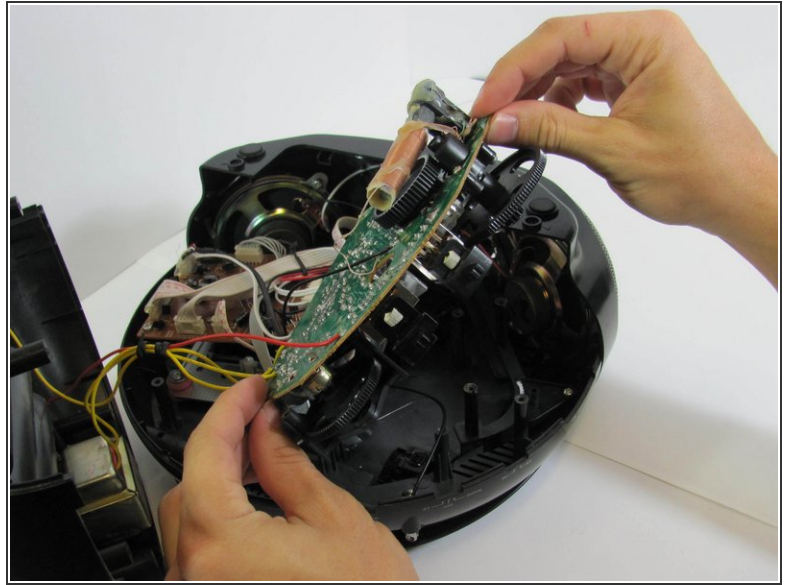
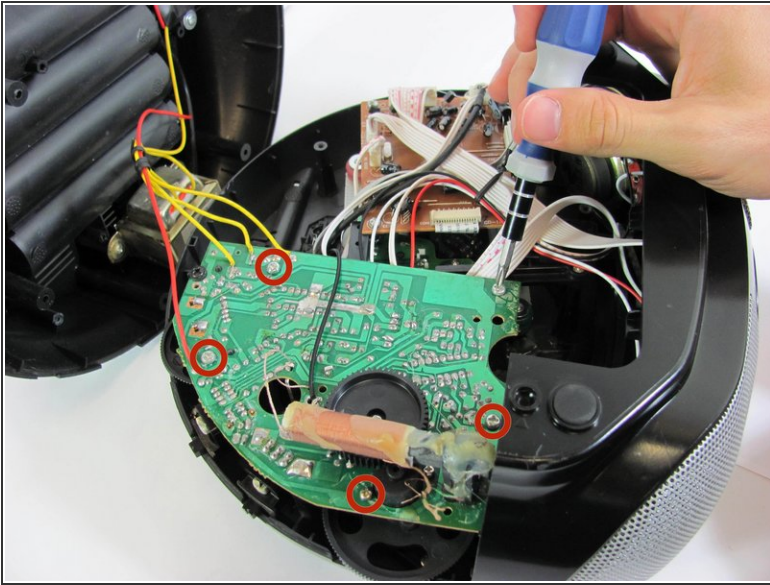


- With a plastic opening tool, wedge the bottom shell from the main speaker face along the edge.

 The bottom cover has two red and two yellow wires attached to it that you don't want to pull off. Handle the casing carefully.

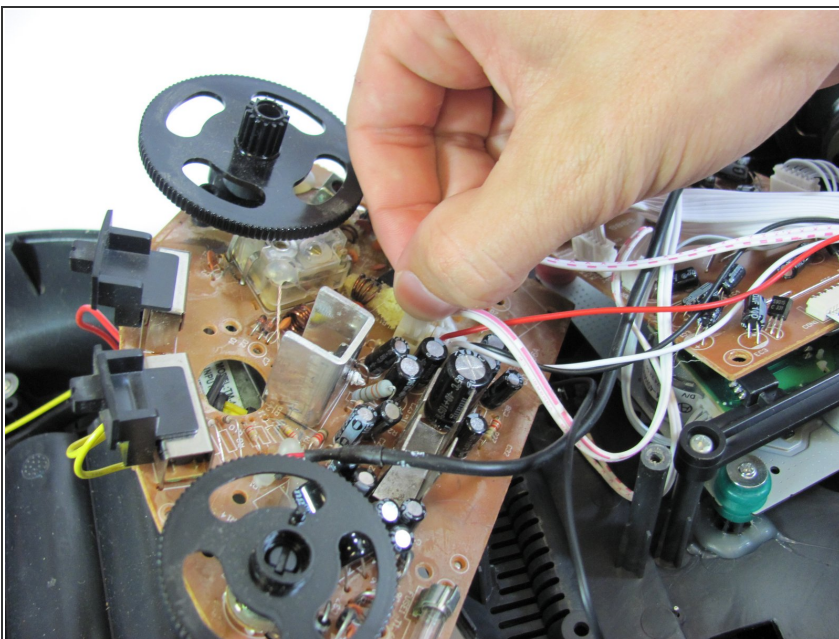
- Once the pieces are separated, pull them apart and place the bottom cover aside, near the stereo.

Step 6 — Internal Components



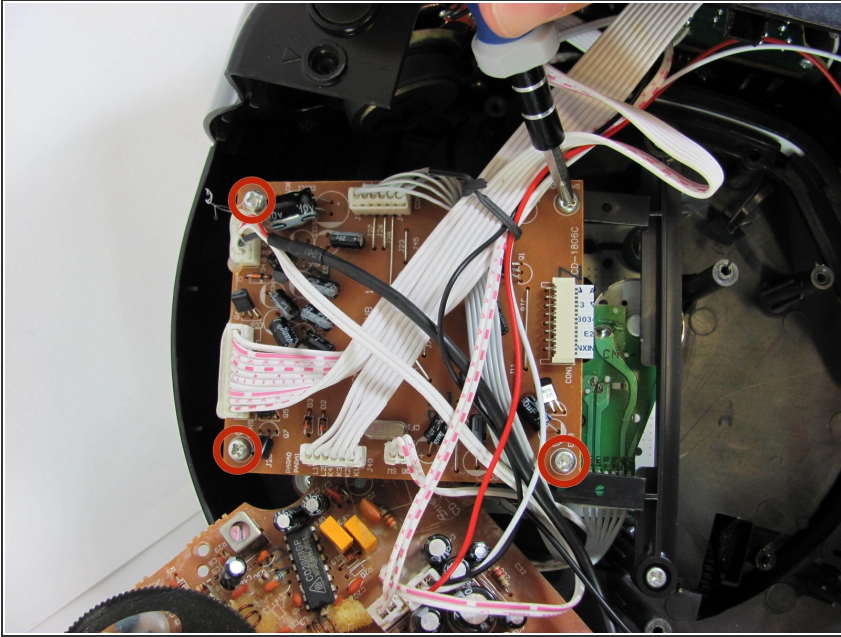
- With a Phillips #2 screwdriver, remove five 5mm screws from the "quarter circle" circuit board.
- ⚠ More wires! Handle the circuit board carefully and take caution not to stretch the red and white wires connected the board to the other components.
- Remove the green quarter circle circuit board and place to the side.

Step 7



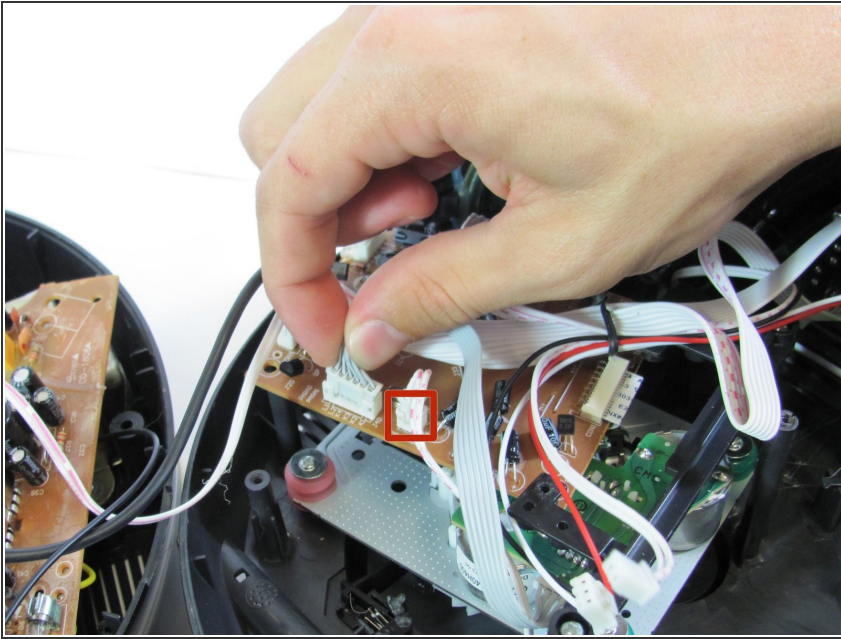
- On the brown side of the quarter circle circuit board, remove the two white ribbon cables with pink stripes attached to a plastic connector. To do this, pinch the tabs with your hands while pulling outward on the connector.

Step 8



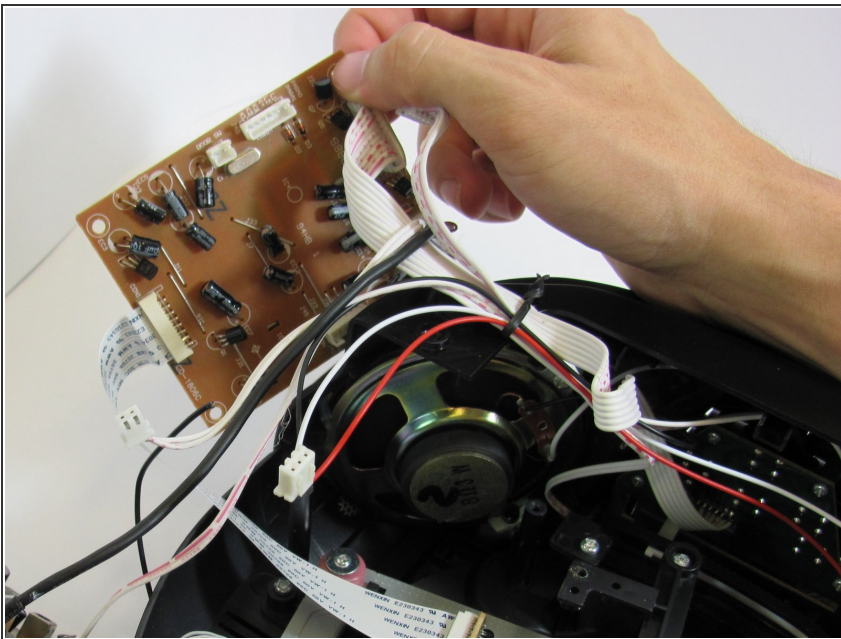
- With a Phillips #2 screwdriver, remove four 6mm screws from the rectangular circuit board.

Step 9



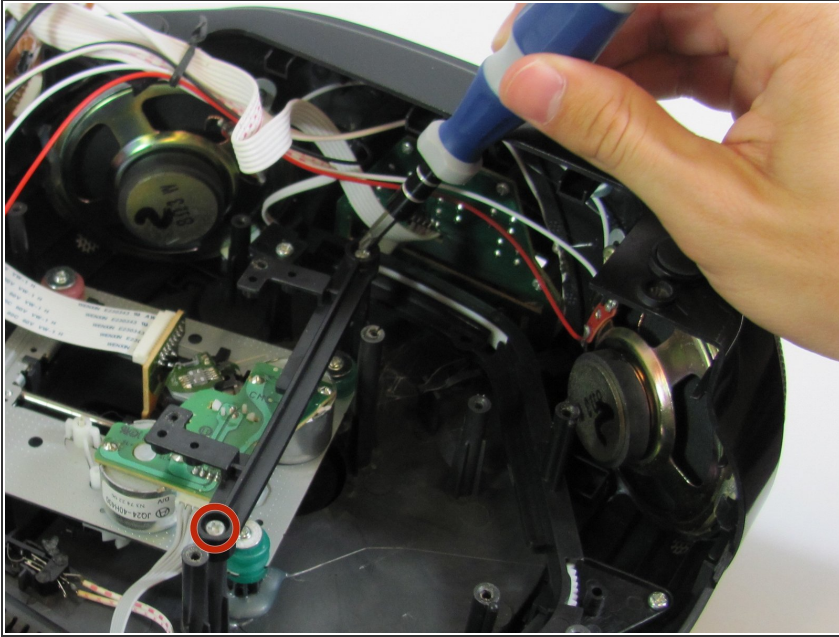
- Remove the two white ribbon cables attached to white plastic connectors from the circuit board by pinching the tabs with your hands and pulling outward on the connector.

Step 10



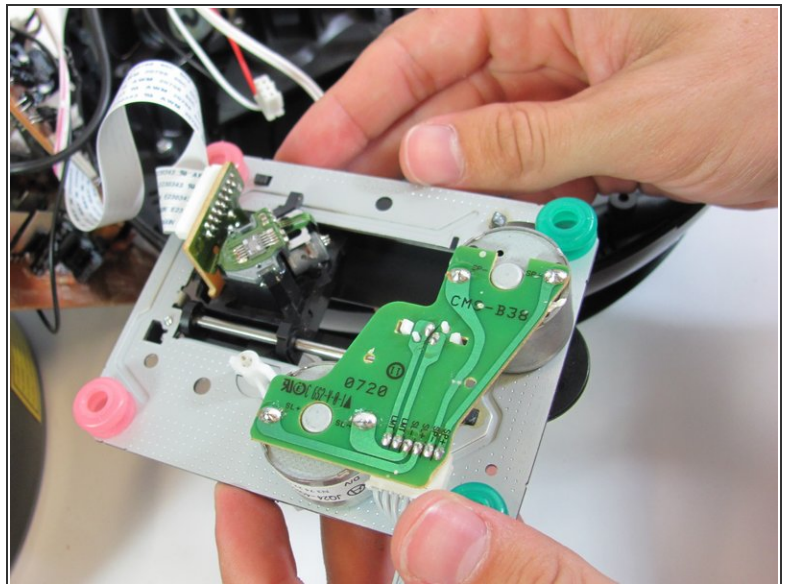
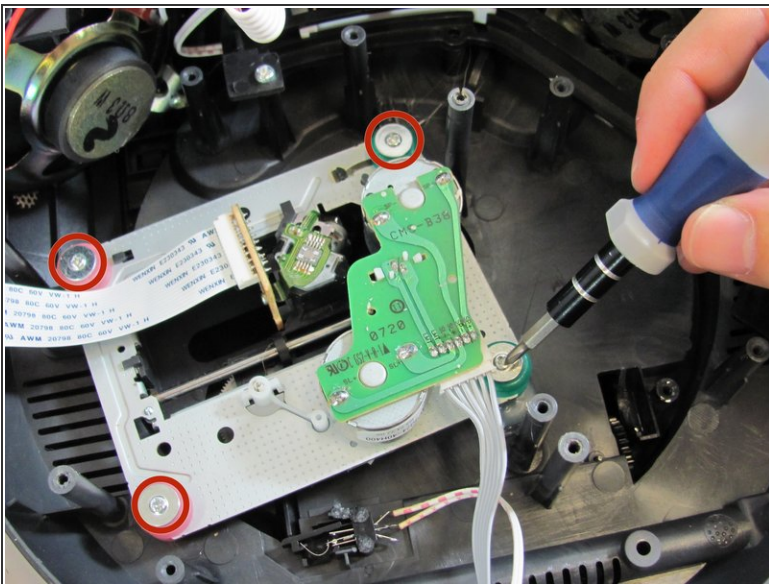
- ⚠ Red and white wires are attached to this board as well. Once again, be careful not to stretch these.
- Remove the rectangular circuit board and place it to the side.

Step 11



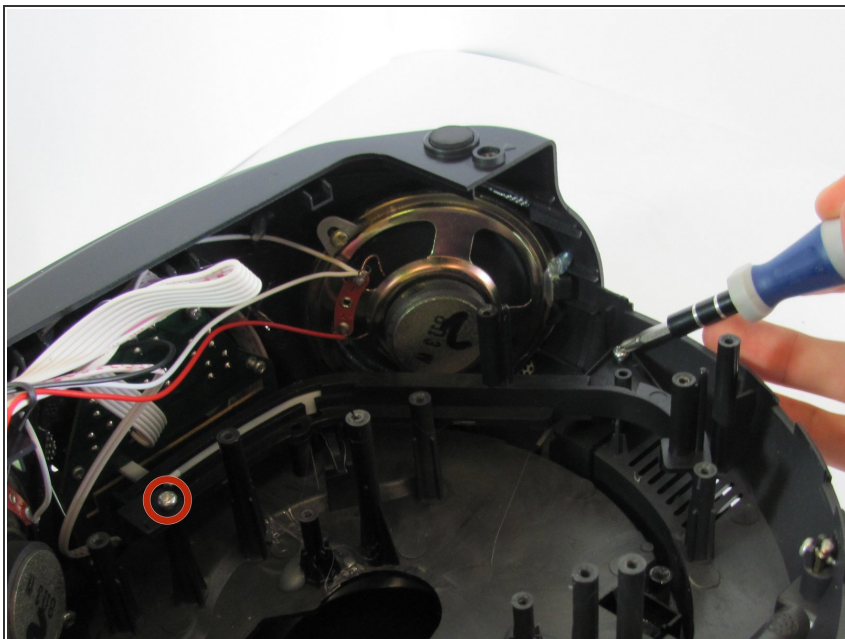
- With a Phillips #2 screwdriver, remove two 5mm screws from the black plastic frame which previously held up the rectangular circuit board.
- Remove the black plastic frame.

Step 12



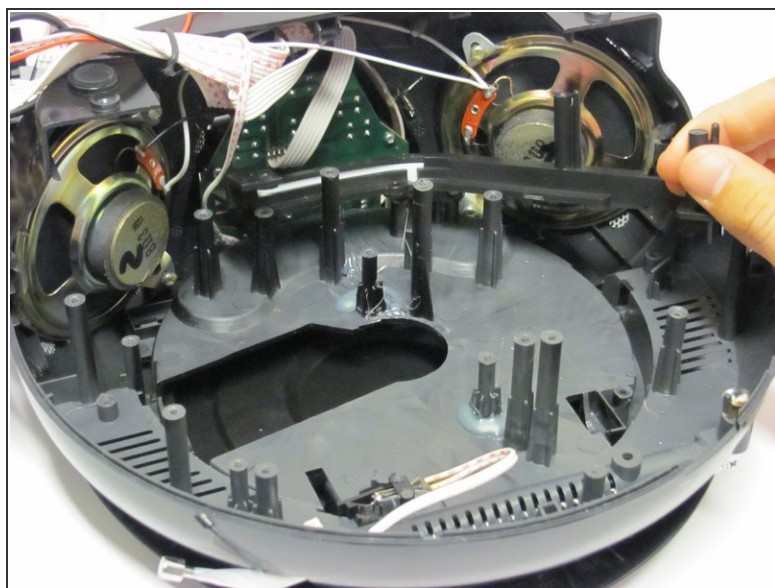
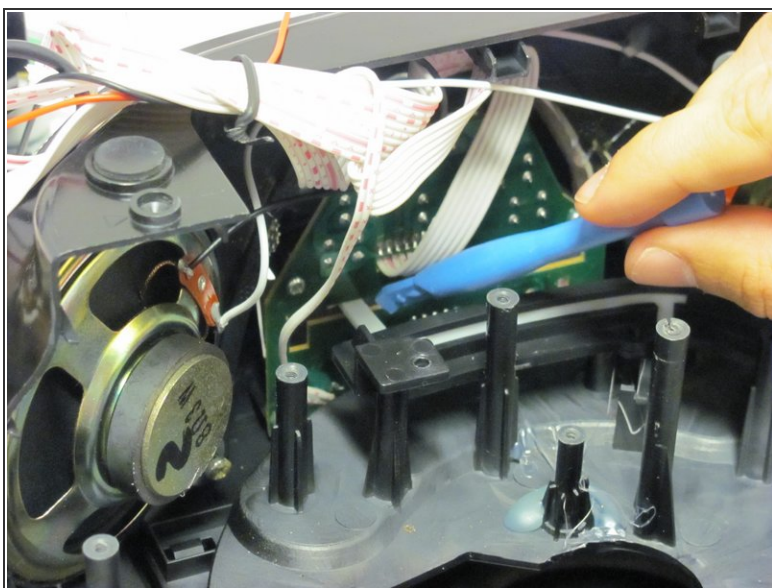
- With a Phillips #1 screwdriver, remove four 3mm screws from the silver metal circuit board.
- ⚠ This board has two white ribbons attached to it. Once again, be careful not to stretch these.
- Remove and place the metal circuit board to the side.

Step 13



- With a Phillips #2 screwdriver, remove the two 3mm screws from the black plastic tuner frame.

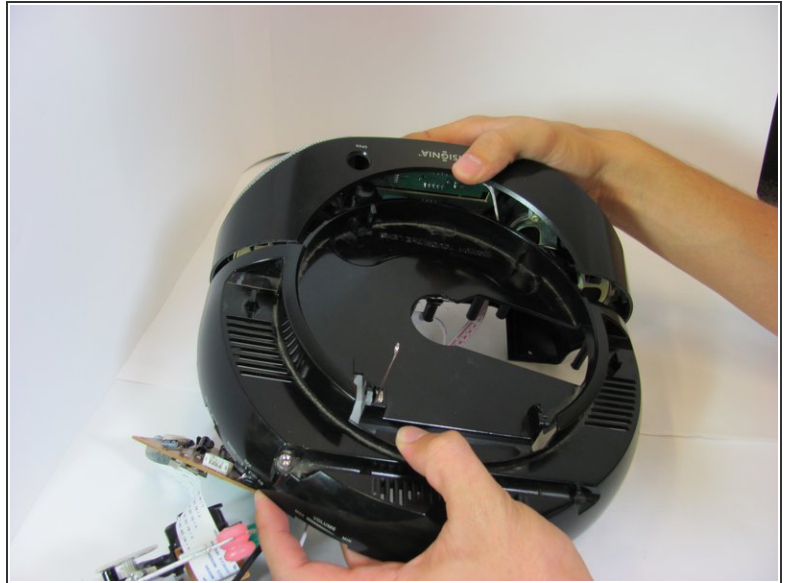
Step 14 — Buttons



⚠ The tuner is fragile and can snap easily. Handle it with care.

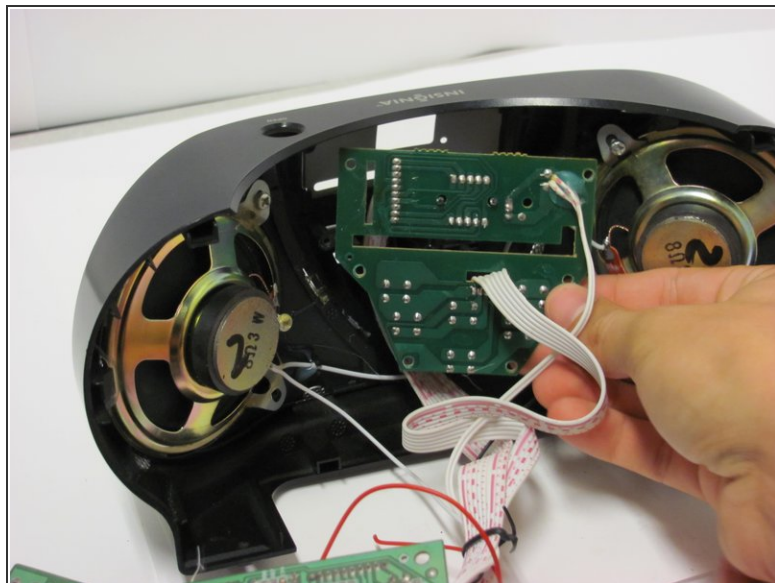
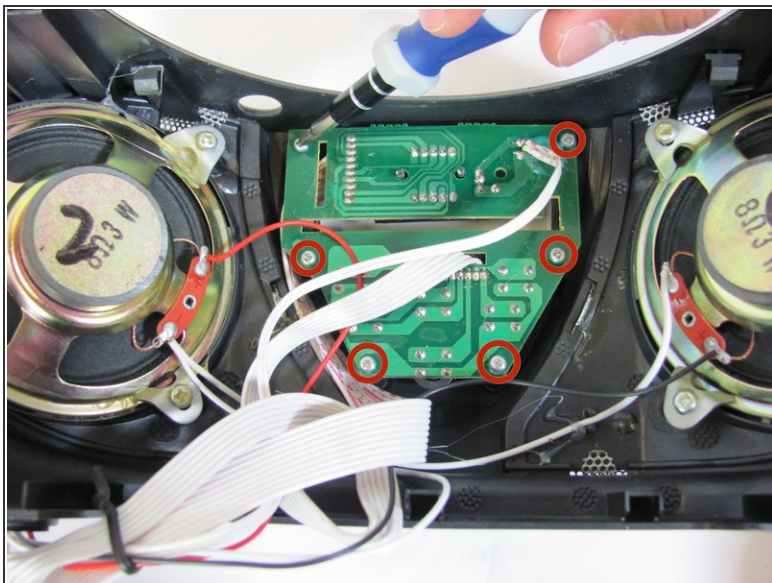
- Remove the black plastic tuner assembly piece using the blue plastic opening tool.

Step 15



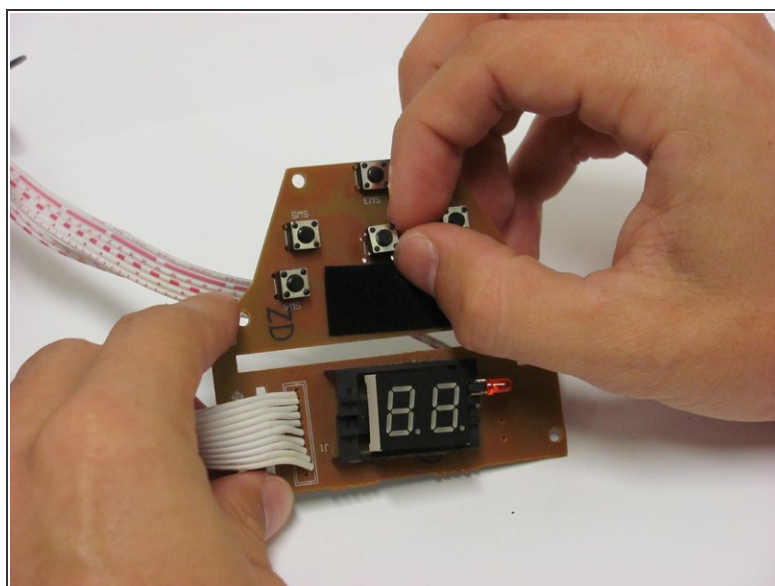
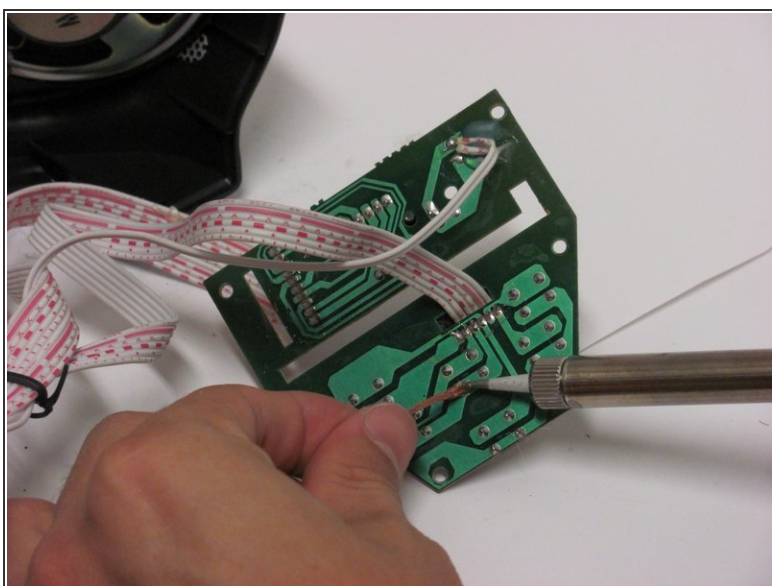
- Turn the device so the CD tray faces up.
 - Use the blue plastic opening tool to separate the front half (containing the speakers and display) and the back half (containing the antenna).
- ⚠ When separating the device, keep in mind there are still wires attaches to the front half. Be careful not to damage these.
- Pull the two plastic pieces apart. This will require a mild amount of force.

Step 16



- Remove the six 5mm #2 Phillips head screws from the circuit board.
- Remove the circuit board. This may require you to wiggle the board a little to get it free.

Step 17



- Remove the solder from the back of the button. There are 4 points of solder for every button.
- Remove the button from the circuit board.

To reassemble your device, follow these instructions in reverse order. Solder the wires back on where they have been soldered off.