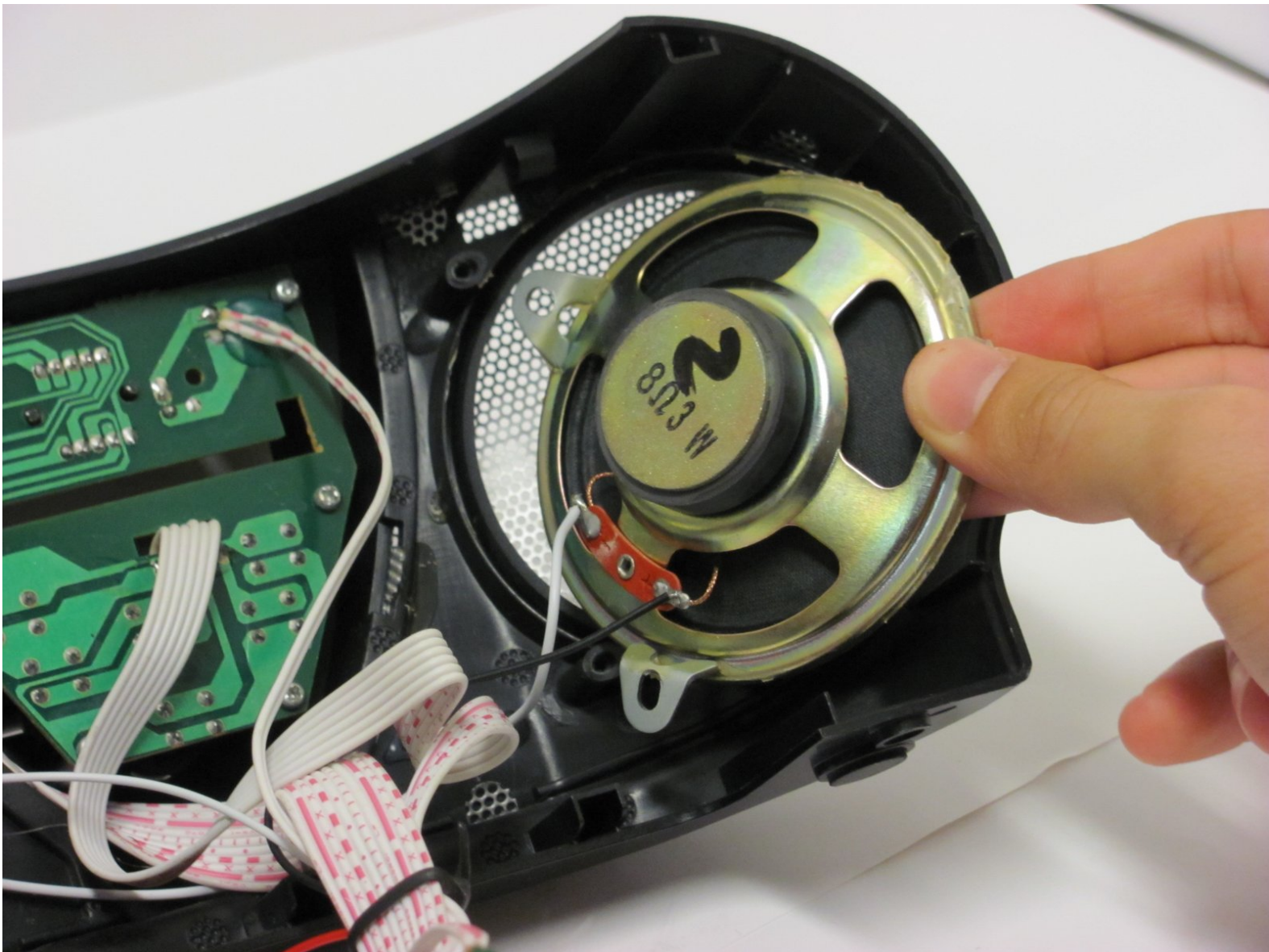




Insignia NS-B2110 Speaker Replacement

Replace your busted, blown-out speakers to bring life back to your boombox.

Written By: Jacob Phillips



INTRODUCTION

In this guide you will be taking apart your boombox to reach the speakers from the inside. These step-by-step instructions will show you how to reach the speakers, how to remove them, and how to install your new speakers. This guide requires soldering, so make sure you have a soldering iron handy and know how to use one. A simple guide to soldering can be found [here](#).



TOOLS:

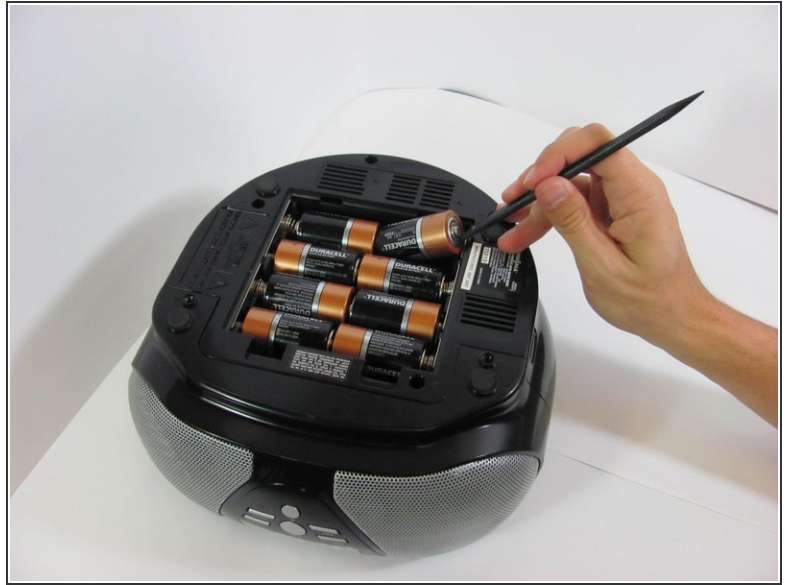
- [Phillips #00 Screwdriver](#) (1)
- [Spudger](#) (1)
- [Phillips #2 Screwdriver](#) (1)
- [Phillips #2 Screwdriver](#) (1)
- [iFixit Opening Tools](#) (1)
- [Soldering Iron](#) (1)

Step 1 — Battery



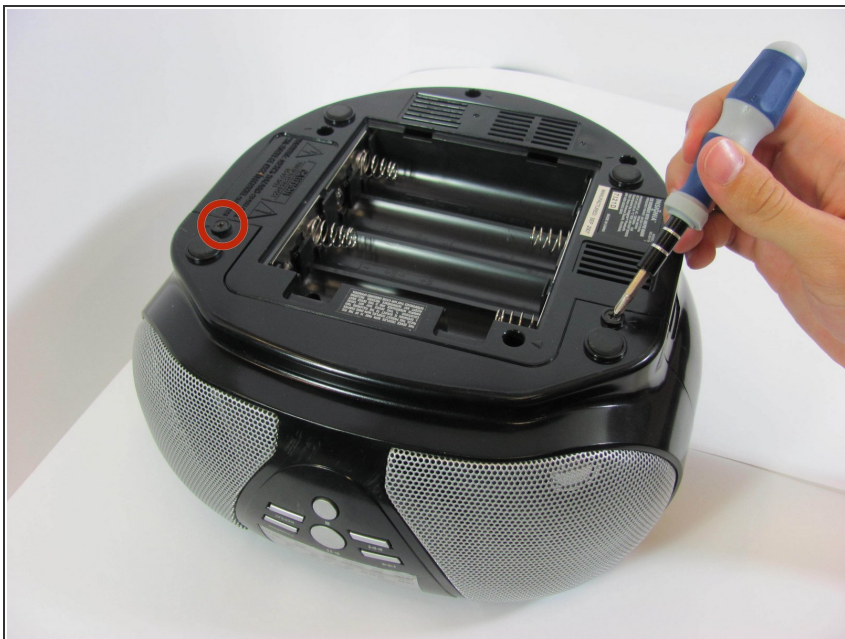
- Flip the stereo so the CD opening is face down.
- With two fingers, pinch the tabs and lift up to open the battery protection cover.

Step 2



- Using a spudger or your fingers, push up against the positive end of the battery. Once it is loose, lift the battery out.
- Repeat until all eight batteries are removed.
- ☑ Make sure the batteries are facing the right direction. If the device does not turn on, you may have the batteries in the opposite orientation.

Step 3 — Bottom Panel



- With a Phillips #2 screwdriver, remove two 2mm screws.


Step 4



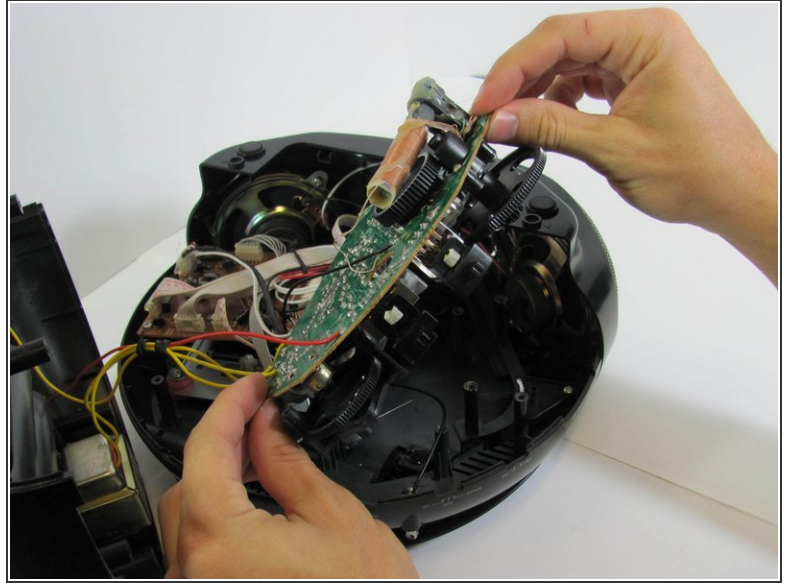
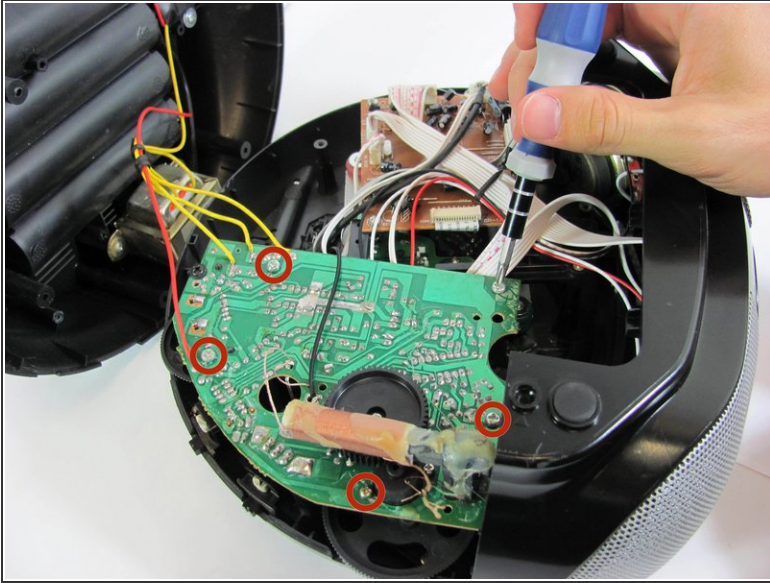
- Using a long Phillips #2 screwdriver, remove one 6mm screw located inside the battery compartment.
- Use the same screwdriver to remove four more 6mm screws along the outside of the case.

Step 5



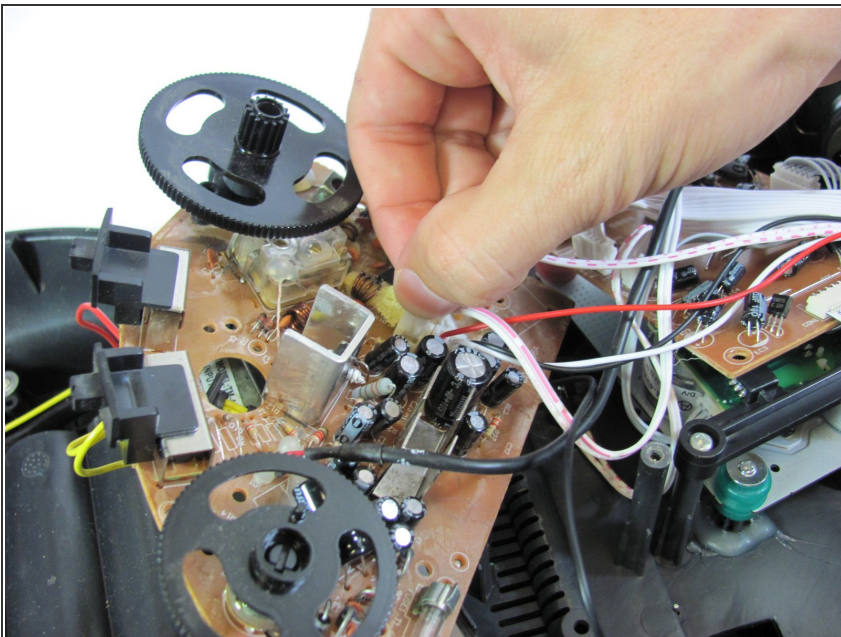
- With a plastic opening tool, wedge the bottom shell from the main speaker face along the edge.
-  The bottom cover has two red and two yellow wires attached to it that you don't want to pull off. Handle the casing carefully.
- Once the pieces are separated, pull them apart and place the bottom cover aside, near the stereo.

Step 6 — Internal Components



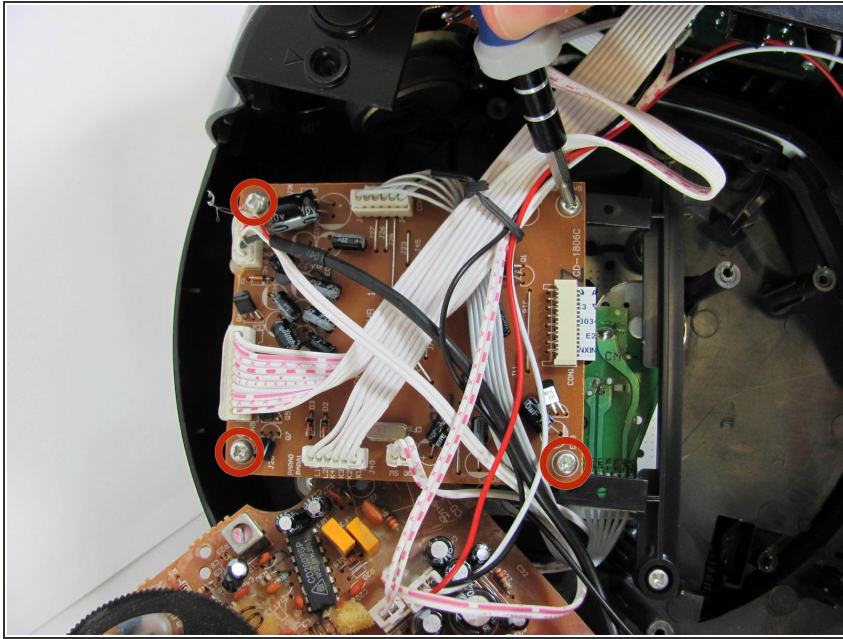
- With a Phillips #2 screwdriver, remove five 5mm screws from the "quarter circle" circuit board.
- ⚠ More wires! Handle the circuit board carefully and take caution not to stretch the red and white wires connected the board to the other components.
- Remove the green quarter circle circuit board and place to the side.

Step 7



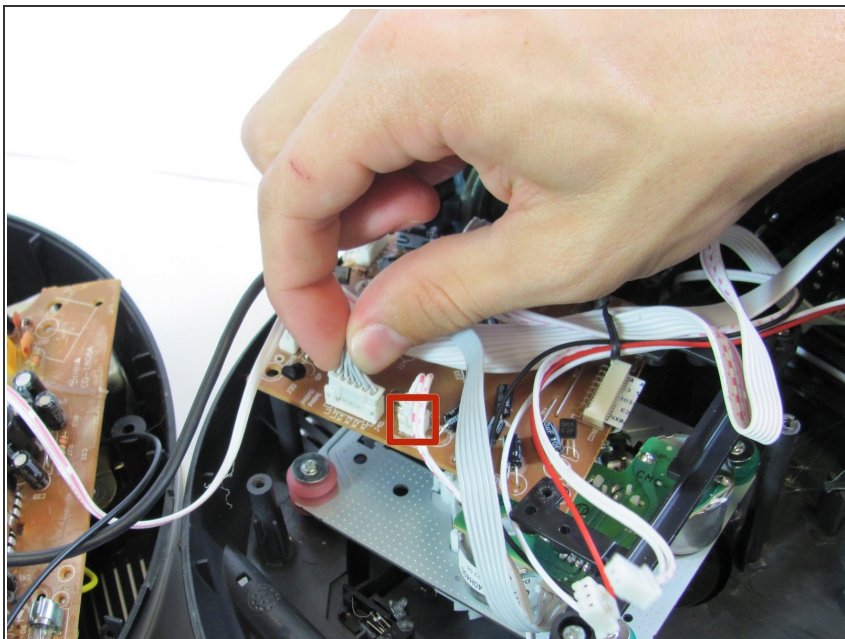
- On the brown side of the quarter circle circuit board, remove the two white ribbon cables with pink stripes attached to a plastic connector. To do this, pinch the tabs with your hands while pulling outward on the connector.

Step 8



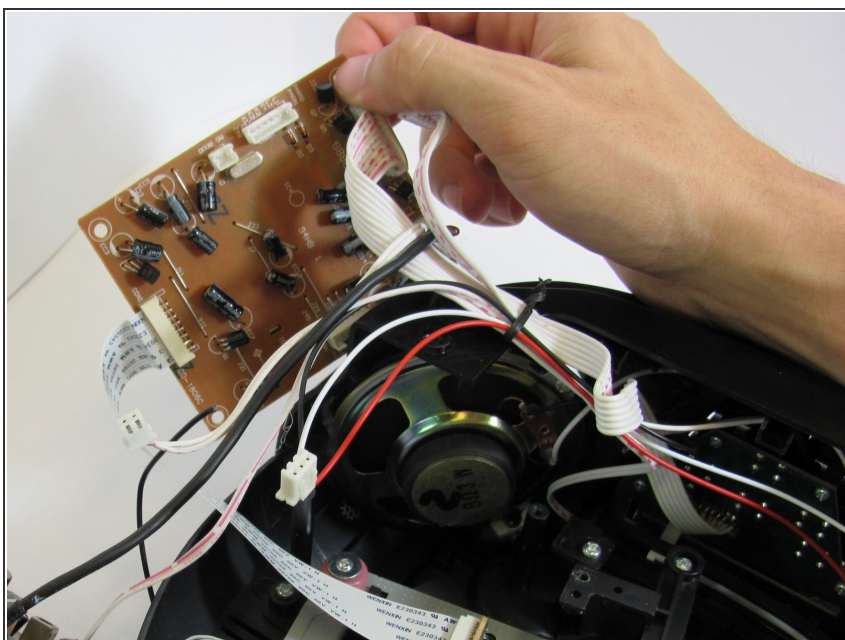
- With a Phillips #2 screwdriver, remove four 6mm screws from the rectangular circuit board.

Step 9



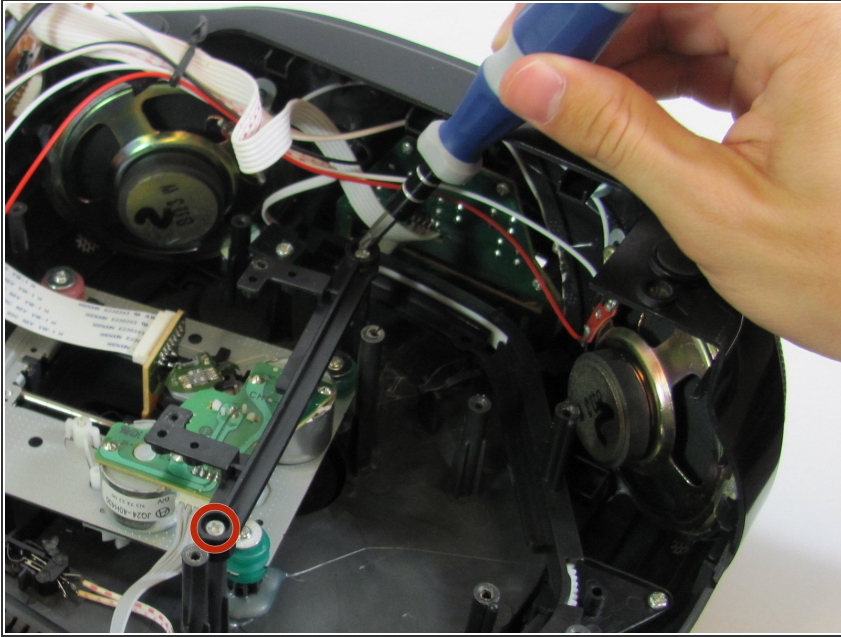
- Remove the two white ribbon cables attached to white plastic connectors from the circuit board by pinching the tabs with your hands and pulling outward on the connector.

Step 10



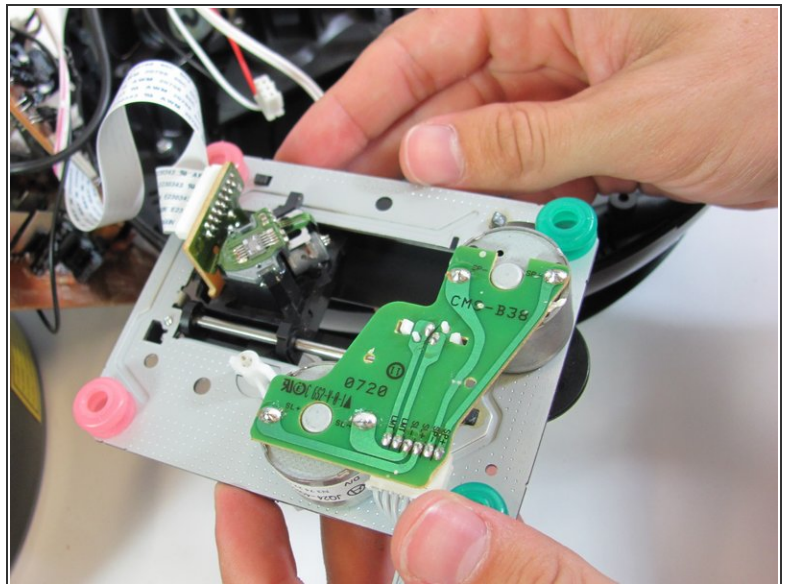
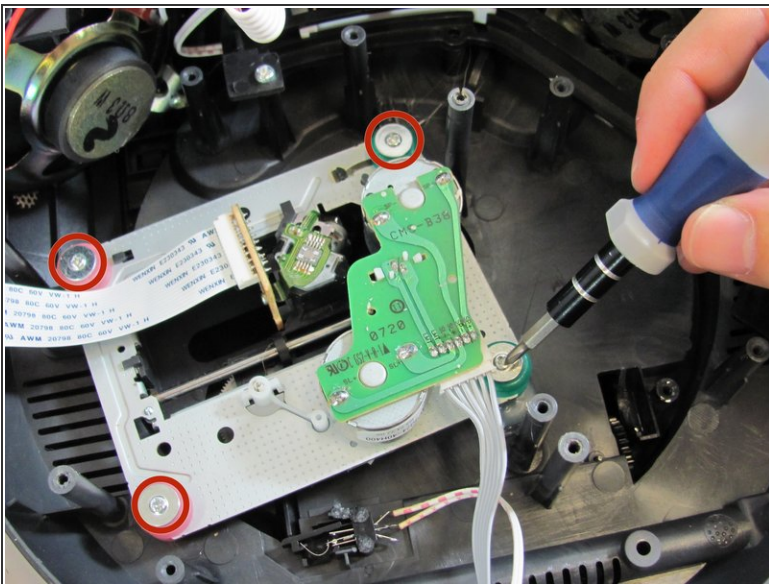
- ⚠ Red and white wires are attached to this board as well. Once again, be careful not to stretch these.
- Remove the rectangular circuit board and place it to the side.

Step 11



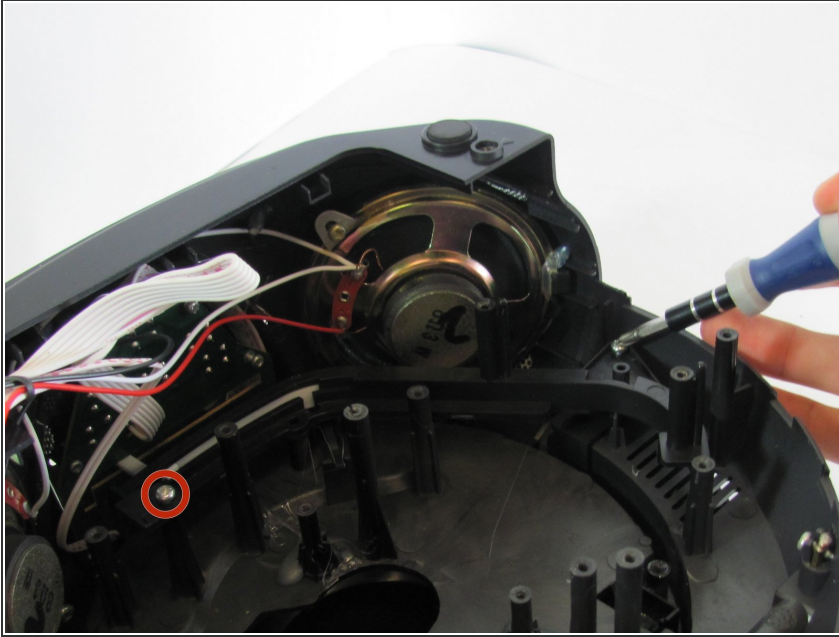
- With a Phillips #2 screwdriver, remove two 5mm screws from the black plastic frame which previously held up the rectangular circuit board.
- Remove the black plastic frame.

Step 12



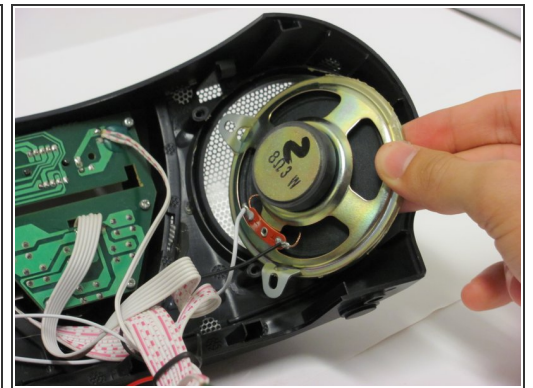
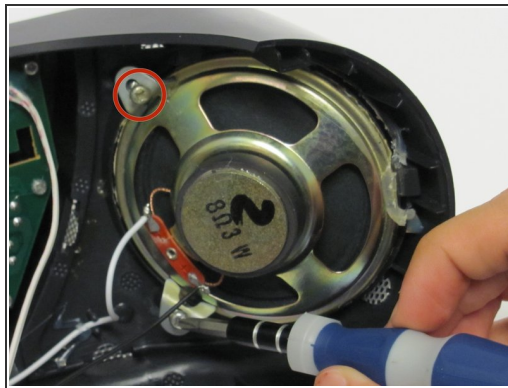
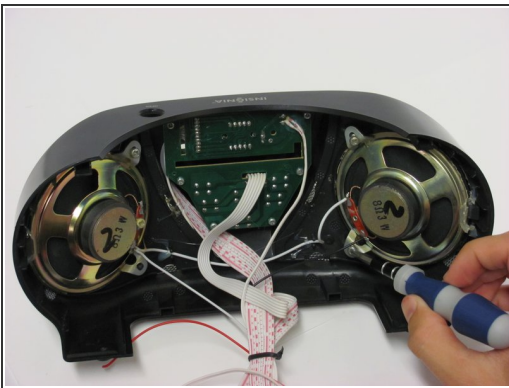
- With a Phillips #1 screwdriver, remove four 3mm screws from the silver metal circuit board.
- ⚠ This board has two white ribbons attached to it. Once again, be careful not to stretch these.
- Remove and place the metal circuit board to the side.

Step 13



- With a Phillips #2 screwdriver, remove the two 3mm screws from the black plastic tuner frame.

Step 14 — Speaker

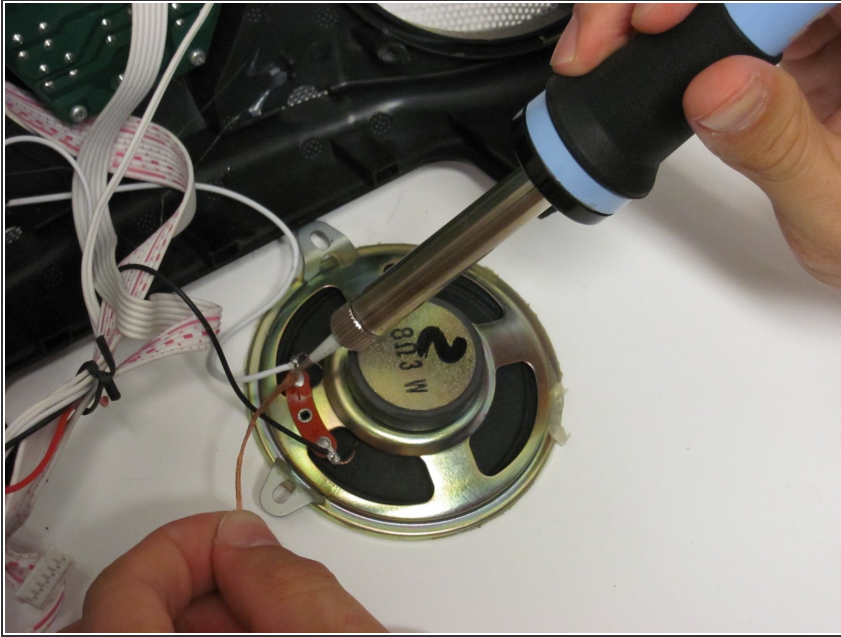


- Using a Phillips #2 Screwdriver, remove two 5mm screws from the speaker.

⚠ The edges of the speaker are very thin and sharp and could cut your finger.

- The speaker will have a light coating of glue to hold it in place. A little force from your fingers will pull it right out. Remove the speaker and set it face-down on the table.

Step 15



- Remove the solder from the two black and white wires connected to the speaker.

To reassemble your device, follow these instructions in reverse order.