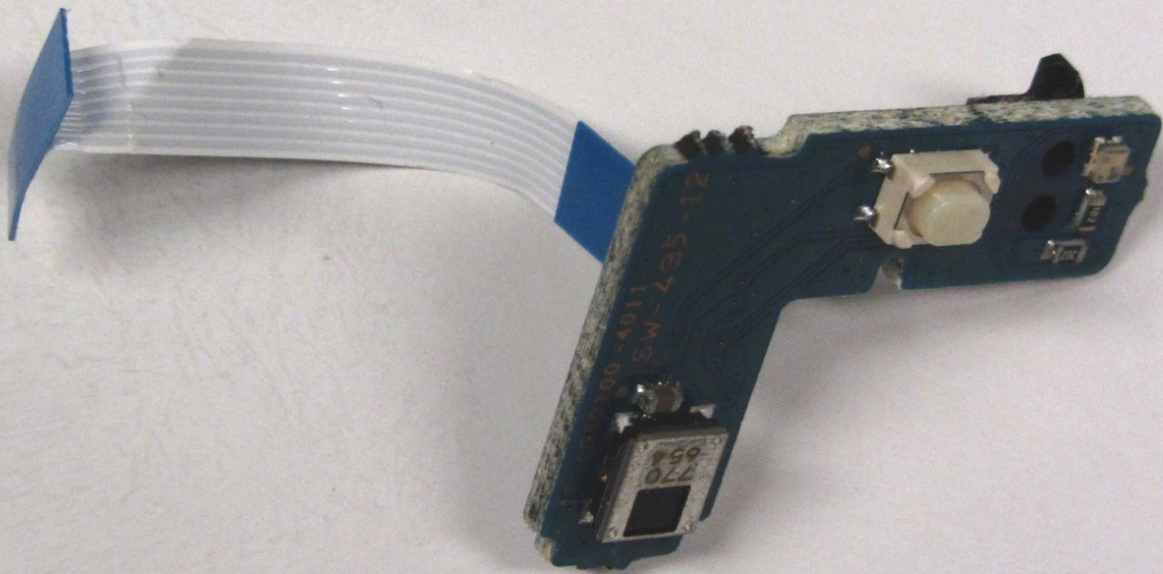




# PlayStation 2 Slimline IR Sensor Replacement

This guide will show you how to locate and replace the Infrared Sensor in the Playstation 2 Slimline.

Written By: Thomas Sullivan



## INTRODUCTION

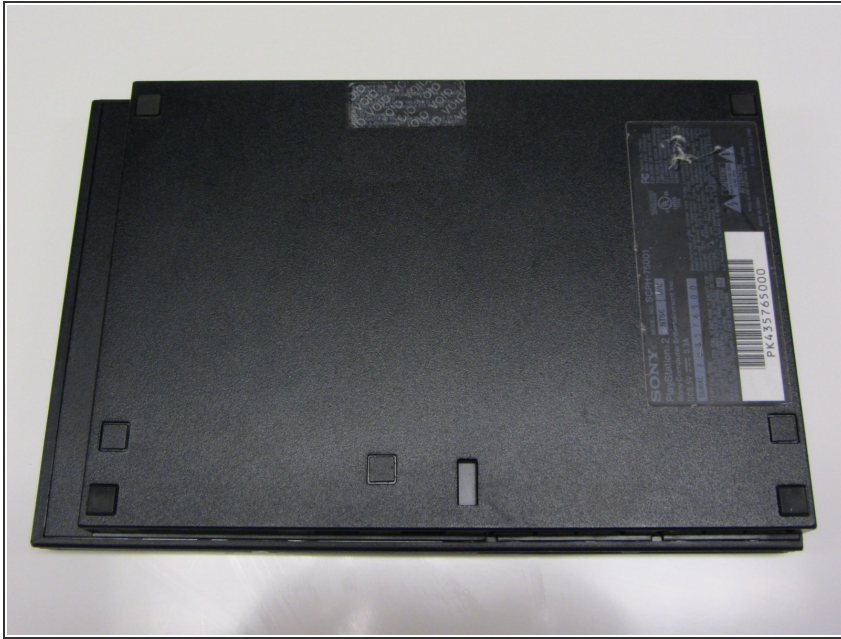
This guide will show you how to locate and replace the Infrared Sensor in the Playstation 2 Slimline. The IR sensor reads wireless signals so PS2 controllers and remotes function as if they were plugged into the unit.



### TOOLS:

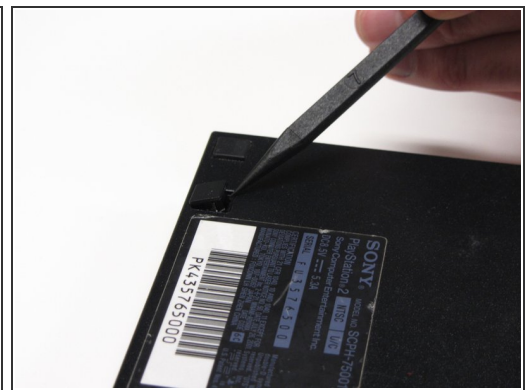
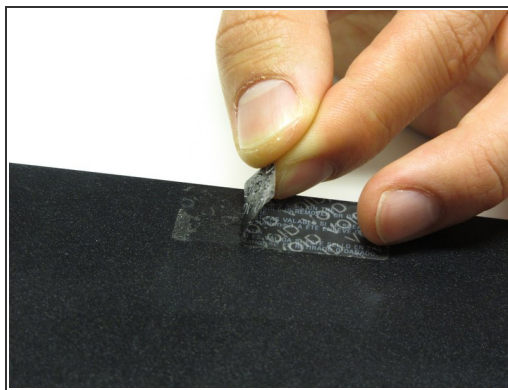
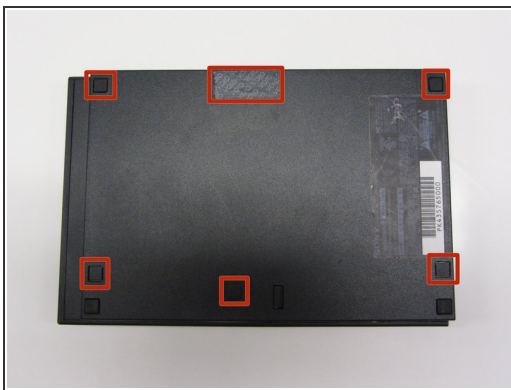
- [Phillips #1 Screwdriver](#) (1)
  - [Spudger](#) (1)
-

## Step 1 — Outer Shell



- Disconnect all cables from the console and flip the unit over to reveal its base.

## Step 2



- Locate the 6 feet on the base of the unit. Pry them off using a spudger to reveal the screws.
- ⓘ Note: One of the feet is located under the sticker shown in the photo. Removing this sticker will void any warranty with Sony.



## Step 3




- Remove all six 4.0 mm screws from the base of the unit using a #1 Phillips screwdriver.

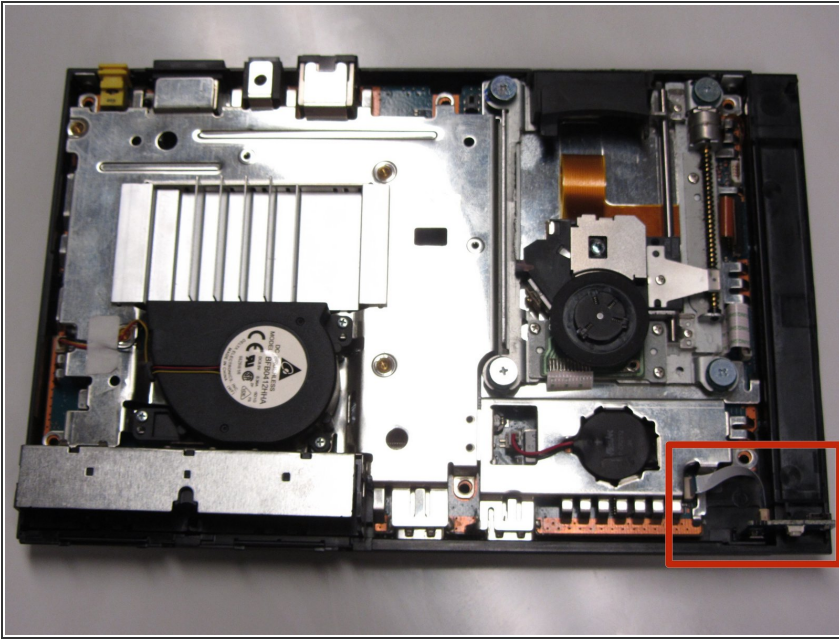
## Step 4



- Starting at the corner at which the power and Ethernet ports are located, pry open the outer shell using a spudger and continue around the entire unit.

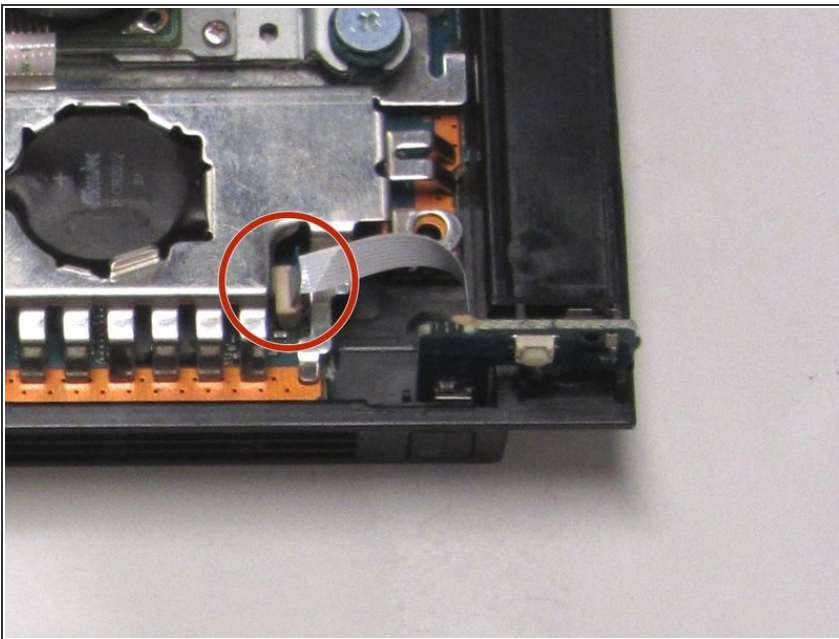
 Note: You may use your hands for additional force to separate the two pieces of the outer shell.

## Step 5 — IR Sensor



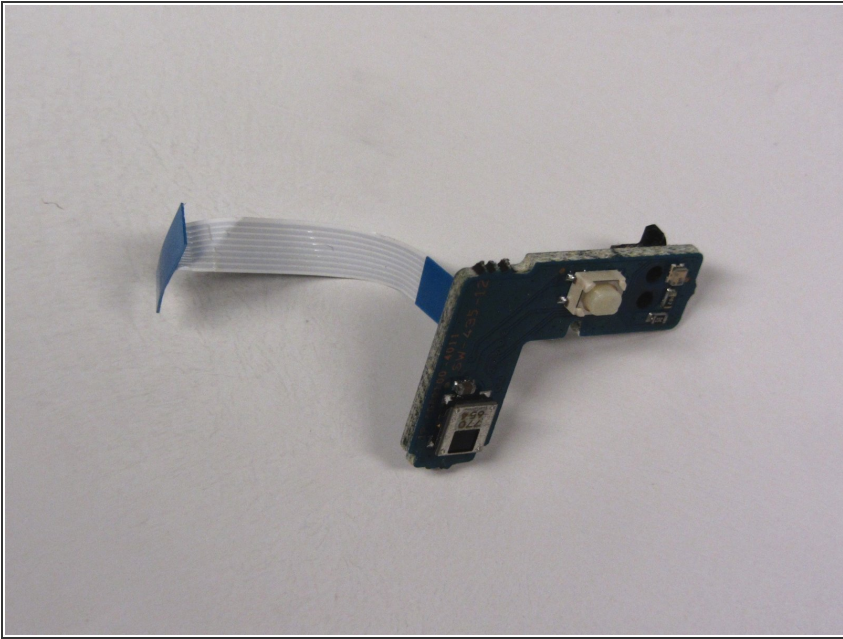
- Locate the IR sensor at the front, right corner of the unit.

## Step 6



- Gently detach the ribbon cable connecting the IR sensor to the motherboard.
- Caution: Always remove ribbon cables by the plastic handles located on either end. Gripping a ribbon cable anywhere but the provided handles can damage the cable and render the component useless.

## Step 7



- Gently lift and remove the IR Sensor from its designated slot.

To reassemble your device, follow these instructions in reverse order.