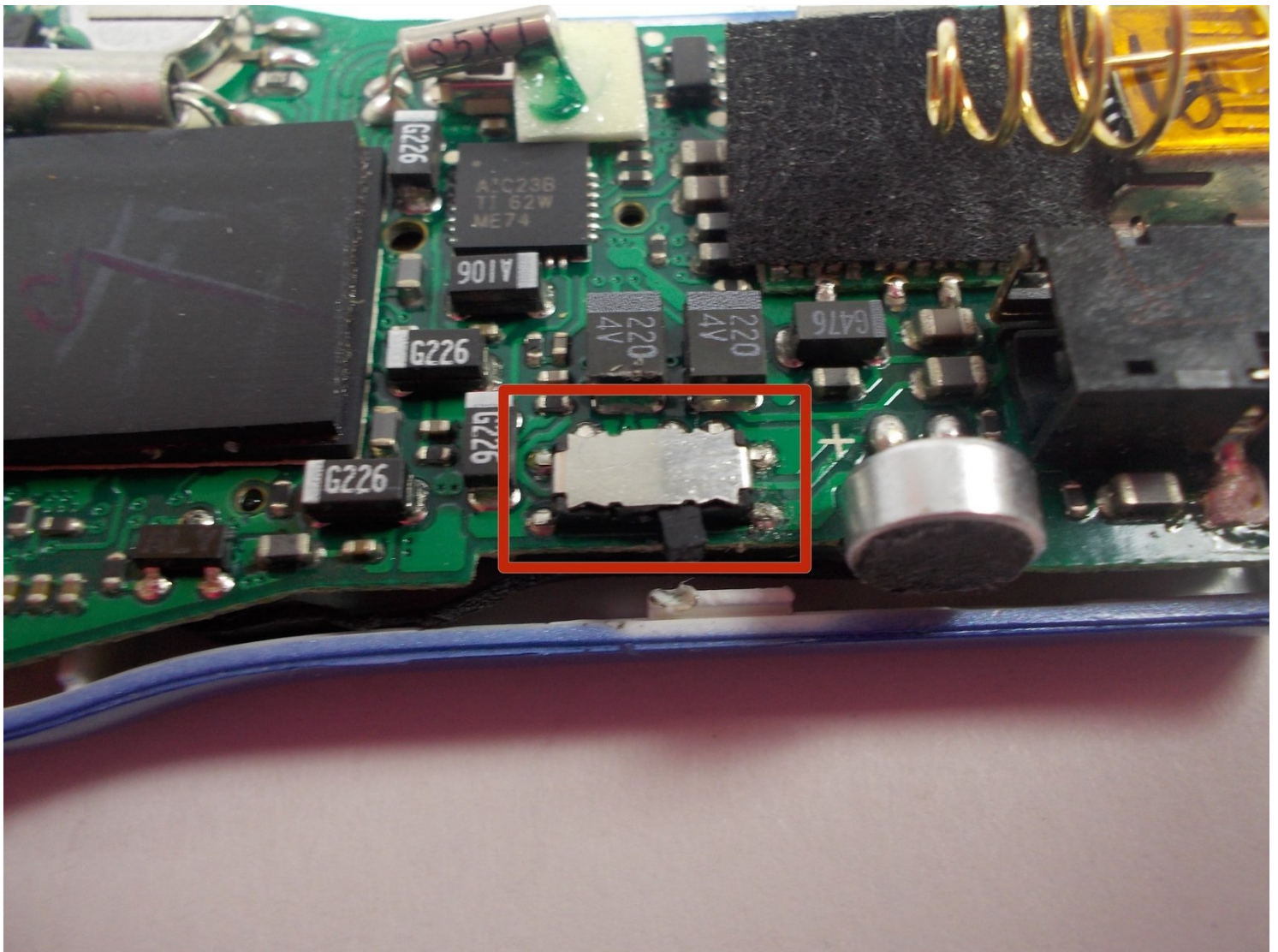




Sandisk Sansa m230 Series mp3 player Hold Switch Replacement

This guide can be used for those that are...

Written By: James Thorne



INTRODUCTION

This guide can be used for those that are experiencing difficulties with the hold switch on their Sandisk Sansa m230 Series mp3 player. A faulty hold switch may cause the device to fail to turn on. Use this guide to replace a faulty hold switch.

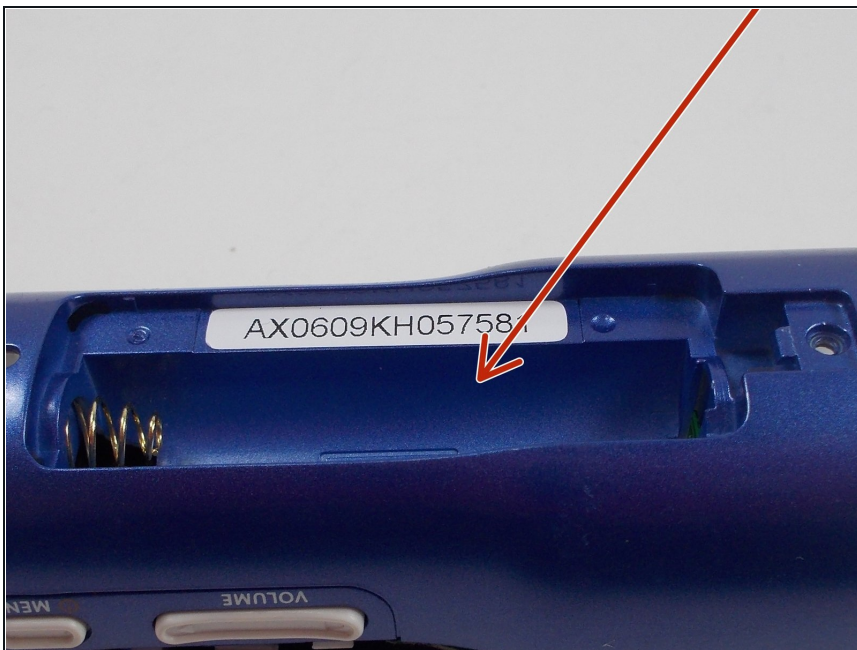
TOOLS:

[Phillips #0 Screwdriver](#) (1)

[Soldering Workstation](#) (1)

[iFixit Opening Tool](#) (1)

Step 1 — Sandisk Sansa m230 Series mp3 player Teardown



- Remove the battery compartment cover.
- Remove the battery.

Step 2



- Locate and remove the screw next to the battery compartment lid.

Step 3



- Locate the interlocking pegs along the seam of the device's casings.
- Gently pry the pegs apart one at a time, working your way around the case.

⚠ Be careful when prying apart the pegs: they are made of plastic and may break.

Step 4



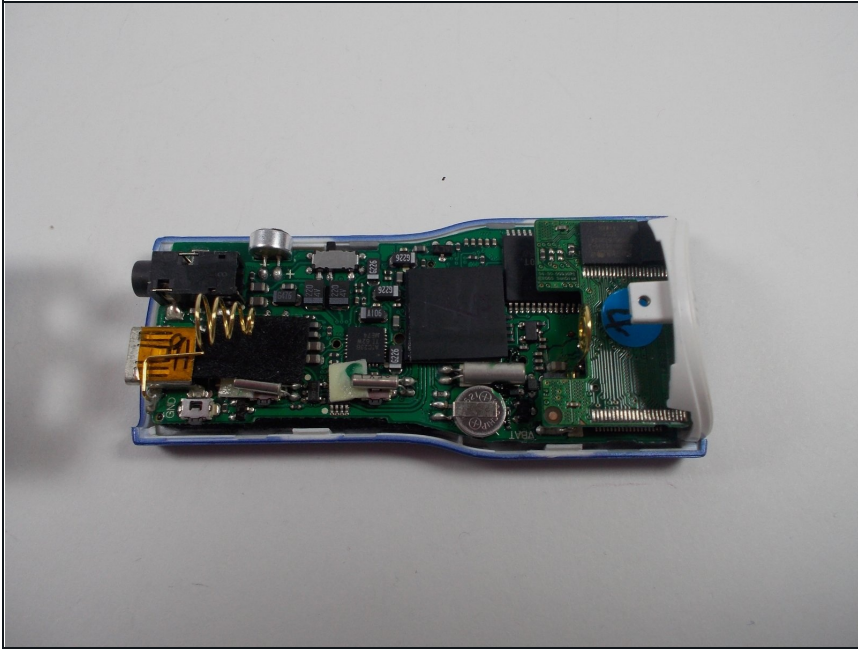
- The battery contact springs may prevent the case from separating.
- Push the battery contact springs down through the hole in the case.

Step 5



- The casing protecting the USB and headphone jacks must be removed.
- Locate and gently pry apart the two interlocking clips holding it in place.
- The outer casings may now be removed and the MP3 player should separate.

Step 6



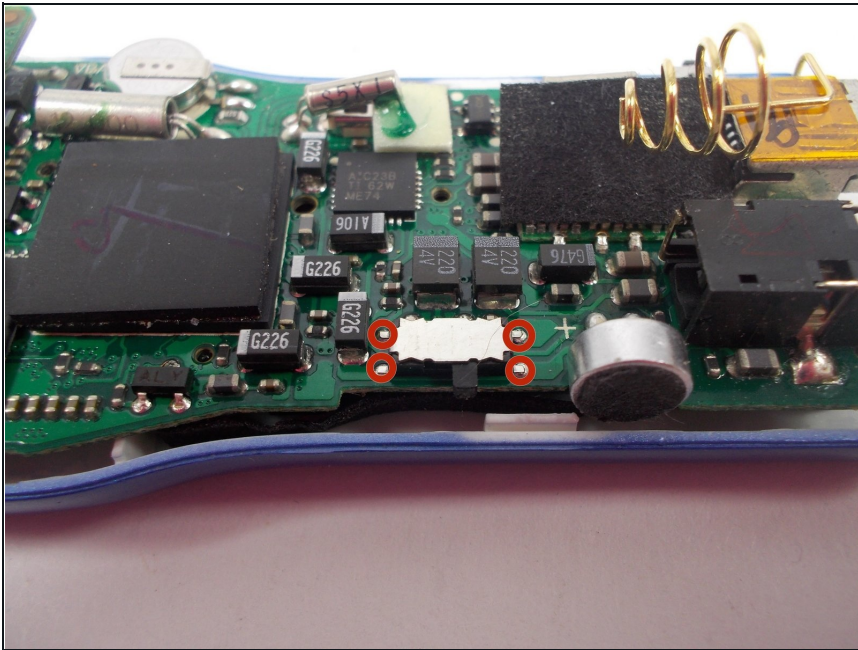
- You now have access to all components found on the inside of the device!

Step 7 — Hold Switch



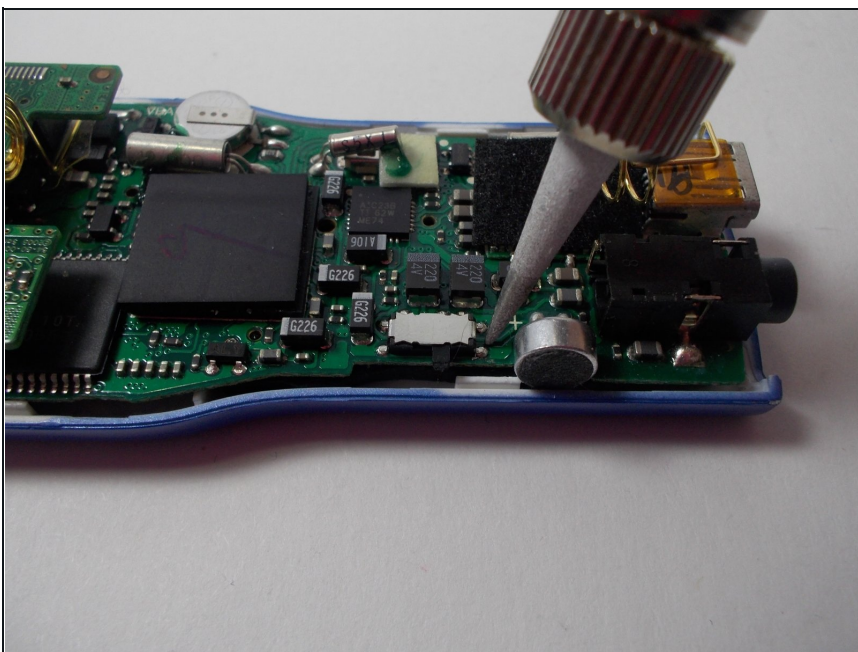
- Locate the hold switch on the motherboard.

Step 8



- Locate the hold switch connection to the motherboard via soldered connections.

Step 9



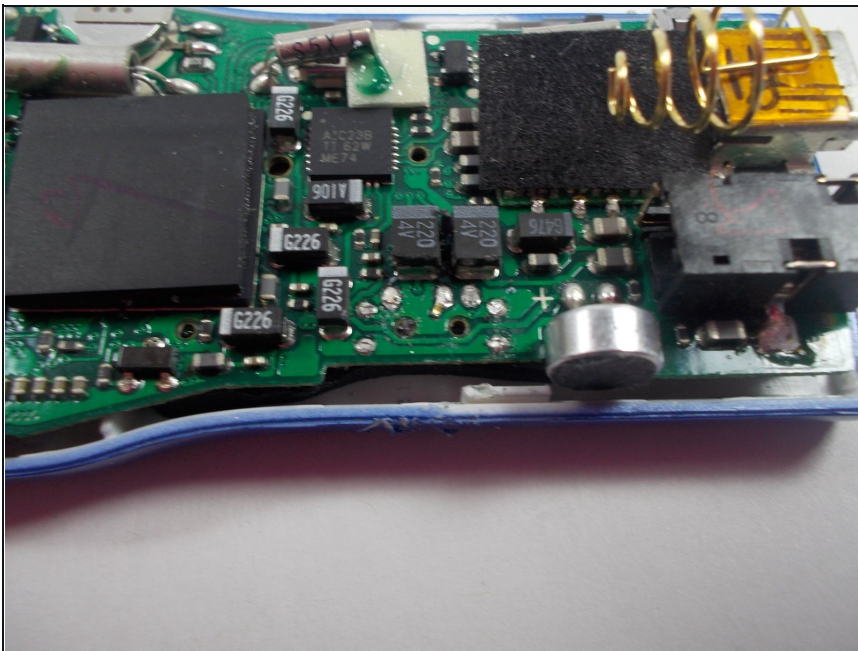
- Use the soldering iron to liquefy the solder connecting the hold switch to the motherboard.

Step 10



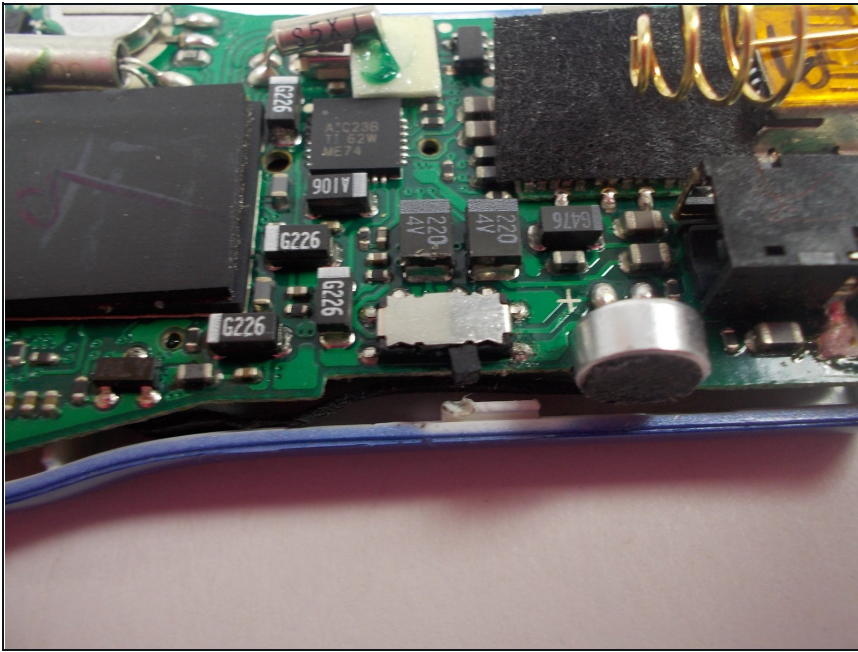
- ⚠ The solder and soldering iron will be very hot. Use caution to avoid getting burned.
- ⚠ Be sure to always rest the hot end of the soldering iron on a metal stand to prevent accidental burns.

Step 11



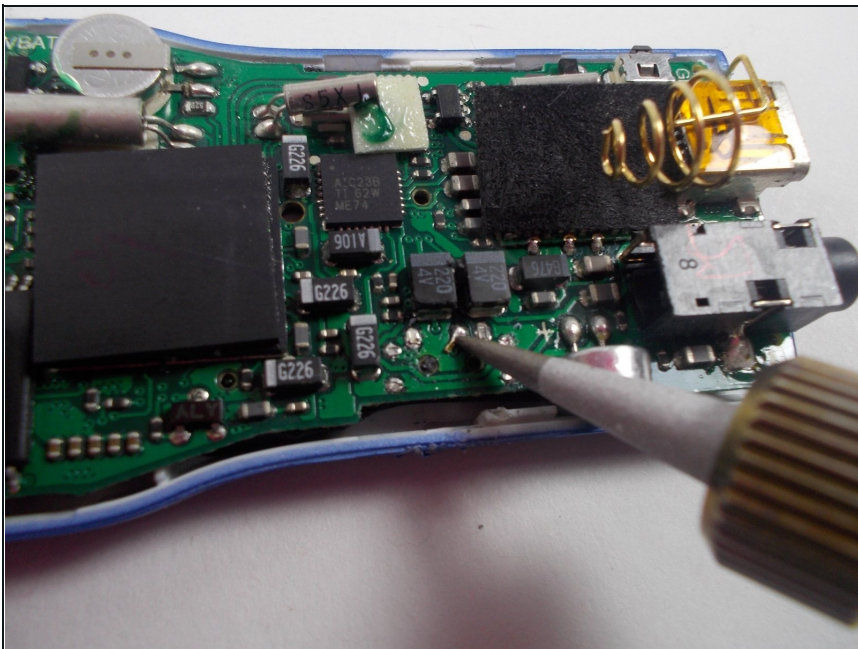
- Liquefy the solder on each contact and remove each contact individually.
- With the contacts removed, lift the switch off the motherboard.

Step 12



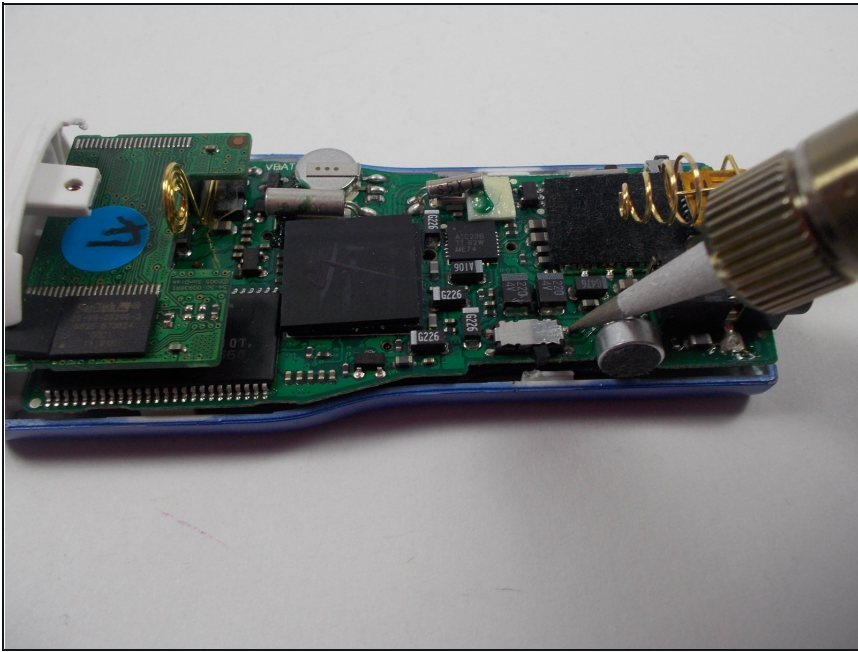
- Replace the faulty hold switch with a new one.

Step 13



- ① There may be some solder in the way of the hold switch's metal contacts. If this occurs simply melt or remove the solder to create room for the contacts.

Step 14



- With the new hold switch in place, use the soldering iron to solder the contacts between the motherboard and hold switch.
- Be sure to allow the new solder to cool and harden.

To reassemble your device, follow these instructions in reverse order.