



Game Boy Advance LCD Screen Replacement

Use this guide to remove the LCD screen from...

Written By: Aldo Corona



INTRODUCTION

Use this guide to remove the LCD screen from the Game Boy Advance.

TOOLS:

Phillips #1 Screwdriver (1)


Spudger (1)

Tri-point Y0 Screwdriver (1)

Step 1 — Remove the Battery Cover/Batteries



- Take the battery cover off by releasing the locking tab and hinging the cover away. Remove the batteries inside the cover

 Do not forget to remove the batteries! This applies to working with any electronic device as working with live electricity may damage the device or cause malfunctions

Step 2 — Unscrew the Back Panel



- Remove the six back panel screws using a Tri-wing Screwdriver.
- Remove bottom back panel screw with a Phillips #1 screw driver. (Image #2)

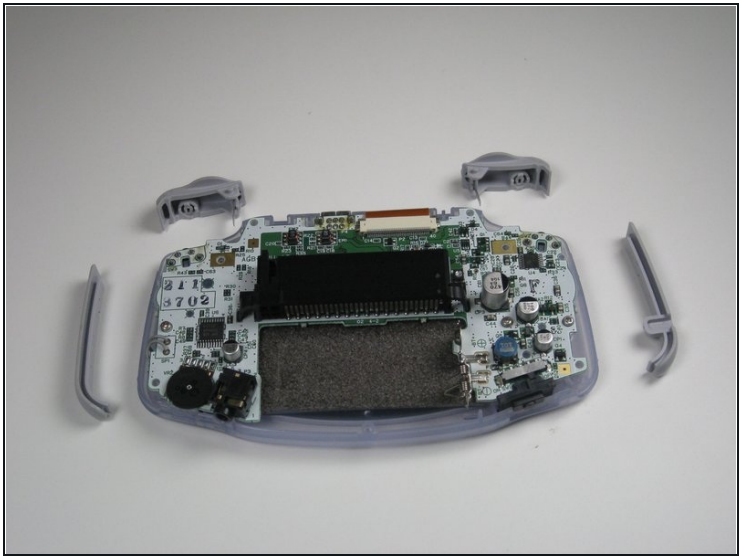
Step 3 — Remove the Back Panel



- Remove the back panel by pulling away with one hand and the front secured in the other hand.

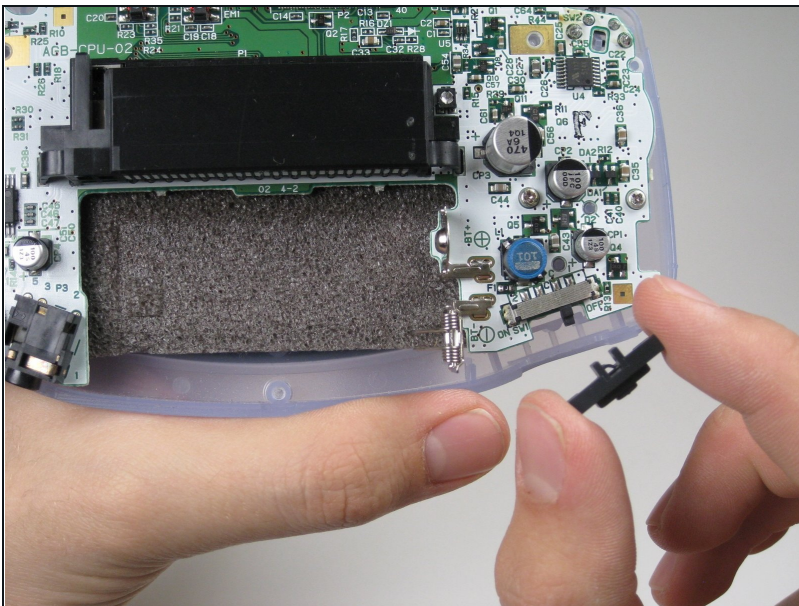
⚠ Removal of the back panel may cause shoulder buttons and side panels to come loose and fall off.

Step 4 — Remove Triggers



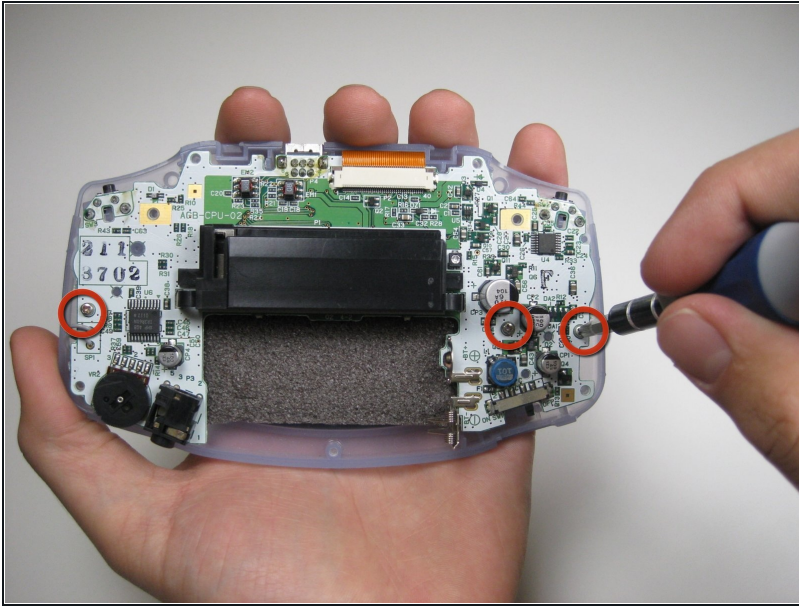
- Remove left and right triggers by lifting and pulling them away from the system.
 - Do the same for side panels
- ① **For finicky or jammed triggers only!** Adjust and correct triggers and reassemble. Most jammed triggers are caused by buttons misplaced or jammed in its enclosure.

Step 5 — Remove the On/Off Switch



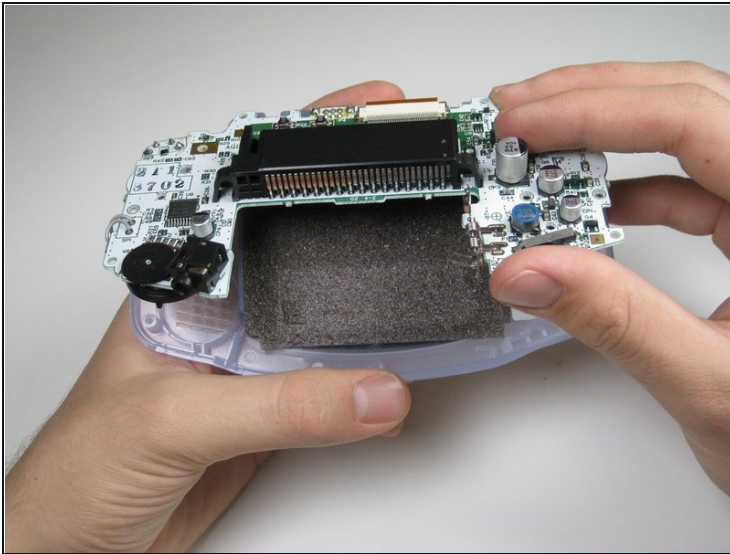
- Remove the gray **On/Off** Switch by pulling up and away from the unit. Replace with another switch if necessary.

Step 6 — Buttons and LCD Screen



- Remove the three screws on the circuit board with a Phillips #1 screw driver.

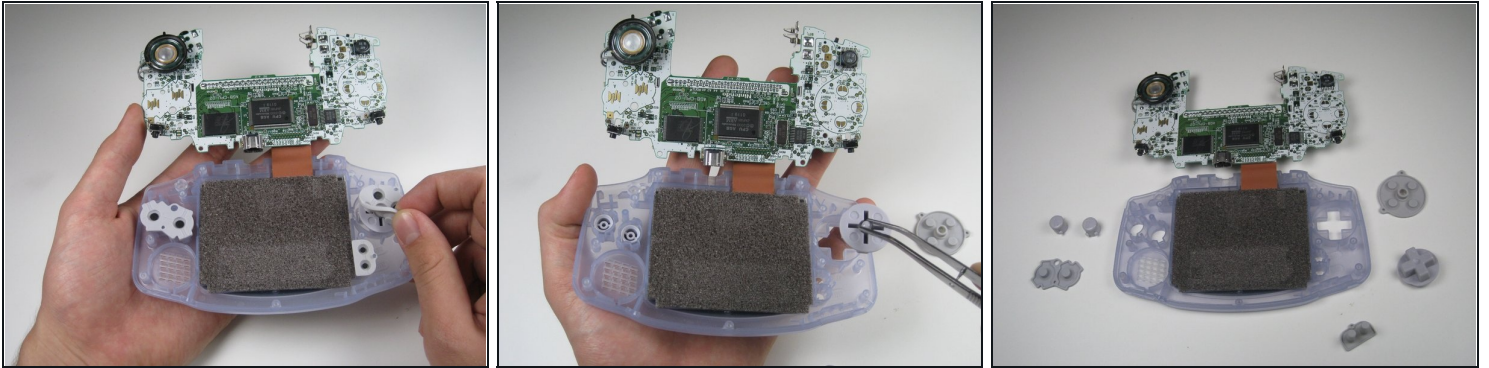
Step 7



- Pull circuit board away from the front panel by pulling up at the bottom of the circuit board, keeping the top ribbon still connected.

⚠ Handle with care! The ribbon connecting the circuit board to the LCD screen can easily be damaged and will require replacement if broken.

Step 8 — Buttons



- Remove the rubber button pads from their pockets.
- Remove the plastic buttons and the D-pad from beneath the rubber pads with [tweezers](#) or by hand.

Step 9 — LCD Screen



- Use a spudger/[tweezers](#)/fingernail to unlatch the LCD ribbon port by pulling the grey tabs on the sides upwards (towards the top edge of the PCB).
- Once the LCD ribbon port has been unlatched, the LCD ribbon should very easily slide out and can be removed with zero force using fingers or tweezers.

Step 10



- Use the spudger to lift the screen from the front panel. Place the spudger in the space directly left of the D-pad.

⚠ The screen and the front panel is connected by a black tape that could rip if not removed carefully.

To reassemble your device, follow these instructions in reverse order.