



Canon Powershot A70 Front Exterior Panel Replacement

Use this guide to replace a Canon Powershot A70...

Written By: Brian



INTRODUCTION

Use this guide to replace a Canon Powershot A70 Front Exterior Panel. The front exterior panel is used as an outside casing for the wiring of the camera. Before starting the guide, make sure you remove the camera's batteries.

TOOLS:

[iFixit Opening Tool](#) (1)

[Phillips #00 Screwdriver](#) (1)

Step 1 — Shutter/Speaker Panel



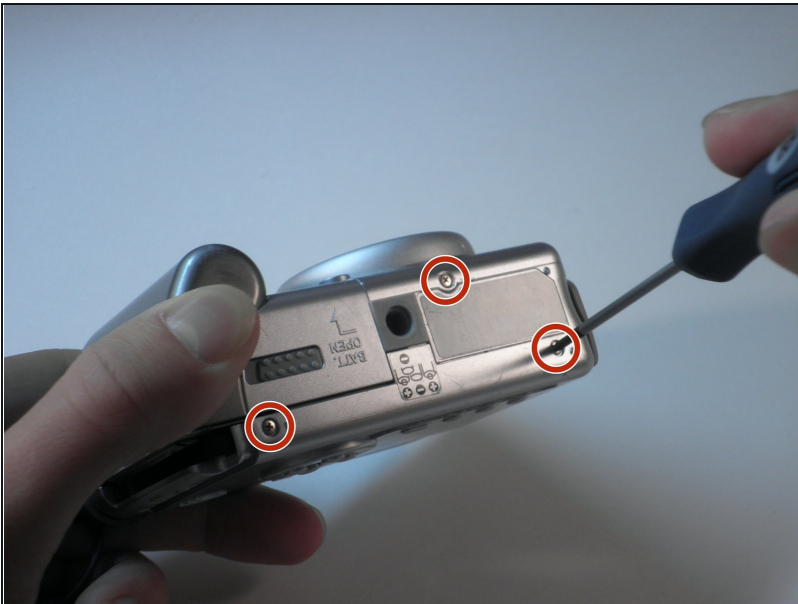
- Open the battery compartment and remove the batteries.
- Remove the two screws that are deep in the battery compartment with a Phillips #00 screwdriver.

Step 2



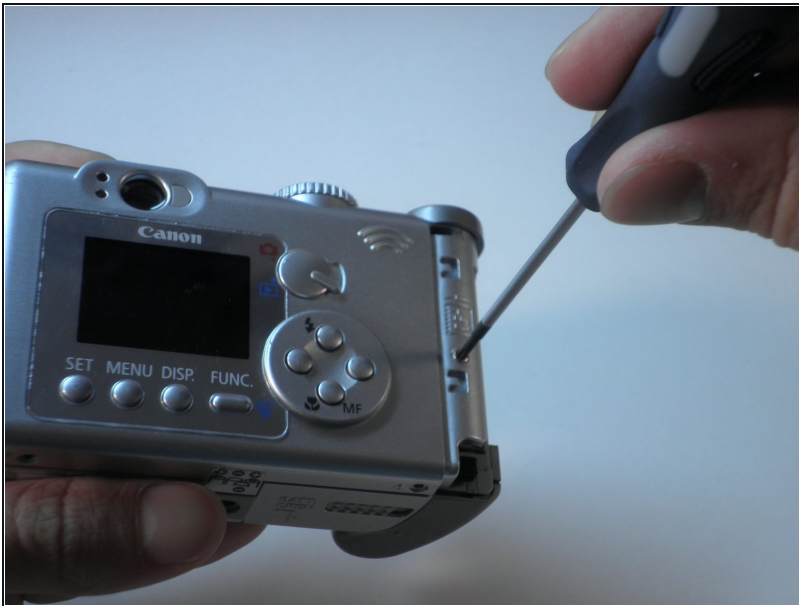
- Open the CF compartment and remove the top screw with a Phillips #00 screwdriver.
- The panel that holds the shutter button and zoom will come off.
⚠ Be careful! There are two small wires connecting the speaker to the body of the camera. These are very delicate so proceed with caution. Do not remove.

Step 3 — Rear Exterior Panel



- Unscrew the three small screws on the bottom of the camera with a Phillips #00 screwdriver.
- Remove the wrist strap.

Step 4



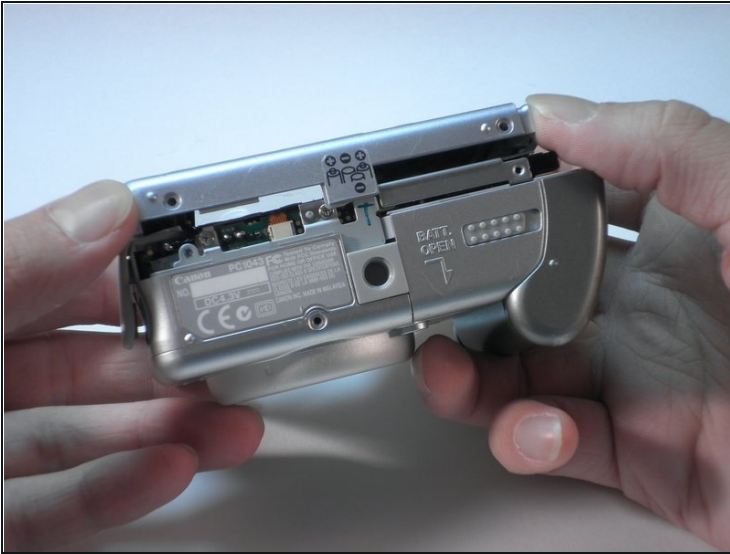
- Remove the screw in the CF compartment with a Phillips #00 screwdriver.

Step 5



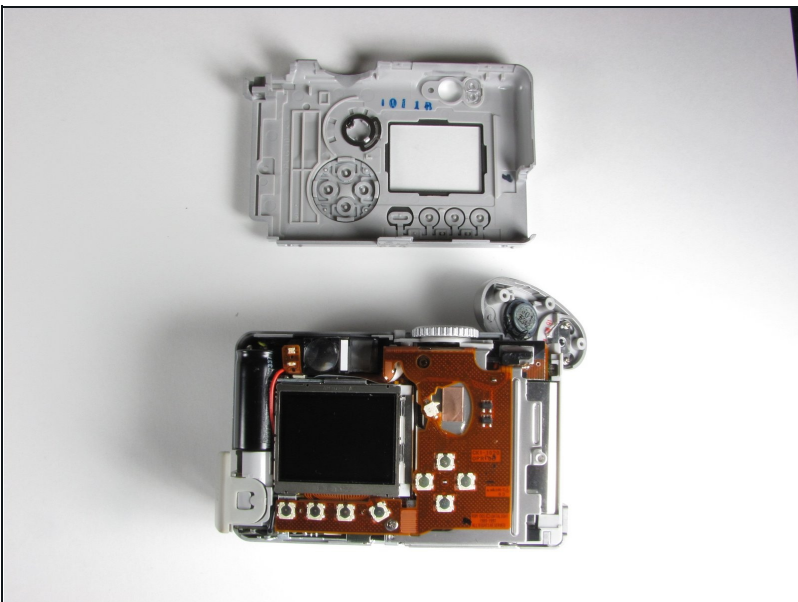
- Open the rubber Digital AV Out compartment flap.
- Pry the battery with an opening tool.
- Carefully pull out the battery with two fingers.
- Remove the two screws that are now visible with a Phillips #00 screwdriver.

Step 6



- Starting from the bottom, carefully pull the casing off.
- The casing will now pivot at the top.
 - There are three catches that hold the back casing to the body.
- ① You may have to pull with some force. The rear panel will make a snapping noise when it separates from the body.

Step 7



- The interior of the camera should look like this.

Step 8 — Front Exterior Panel



- Remove the two screws at the top of the battery compartment with a Phillips #00 screwdriver.

Step 9



- With your right thumb, pull back on the tab while using your left hand to pull the face of the camera away from the body.

To reassemble your device, follow these instructions in reverse order.