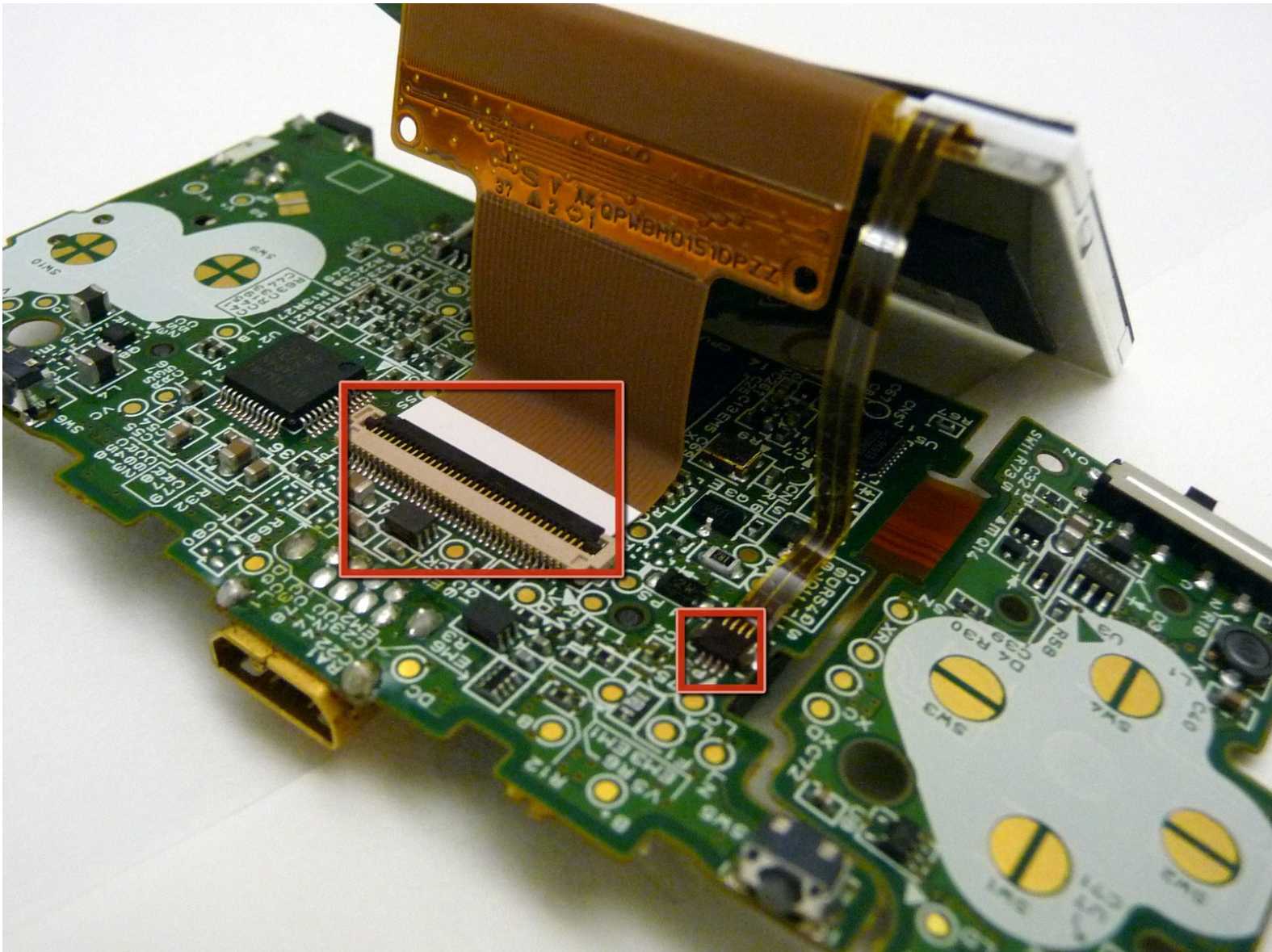




Game Boy Micro Motherboard Replacement

Written By: Brendan Kelly



INTRODUCTION

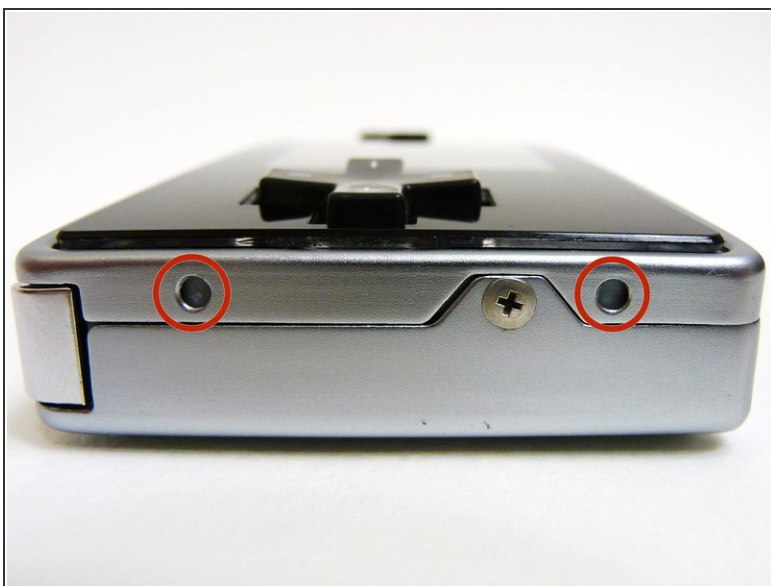
In this guide, we will show you how to remove and replace the motherboard and LCD.



TOOLS:

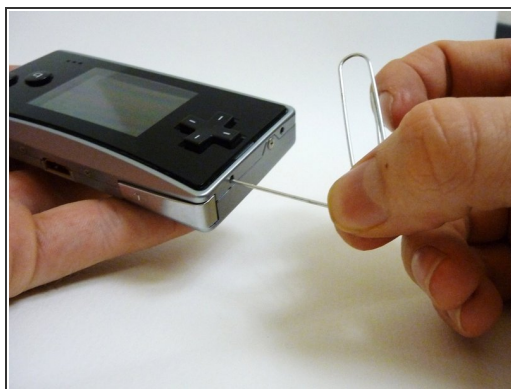
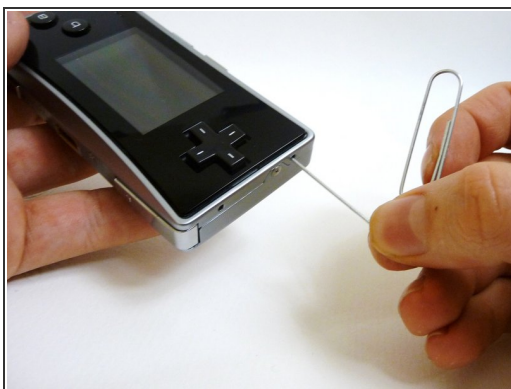
- [Phillips #00 Screwdriver](#) (1)
 - [Spudger](#) (1)
 - [Tweezers](#) (1)
 - [Tri-point Y0 Screwdriver](#) (1)
-

Step 1 — Faceplate



- Locate the two circular holes on the side of the Game Boy nearest to the directional pad.

Step 2



- Straighten the end of a paper clip and push it into each of the circular holes.
- ⓘ You may hear a faint click afterwards.
- Use the paper clip to lever the faceplate off from the unit.

Step 3 — Remove the Cover



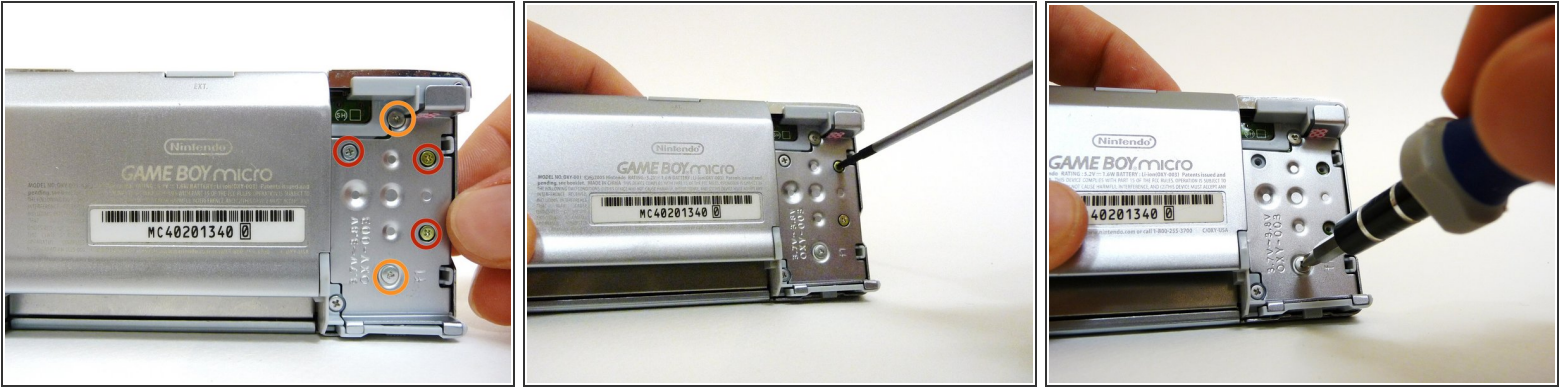
- Remove the Phillips #00 screw on the side of the Game Boy closest to the directional pad.
- Once the screw has been loosened, lift the cover off the back of the device.

Step 4 — Unscrew the Outer Cover



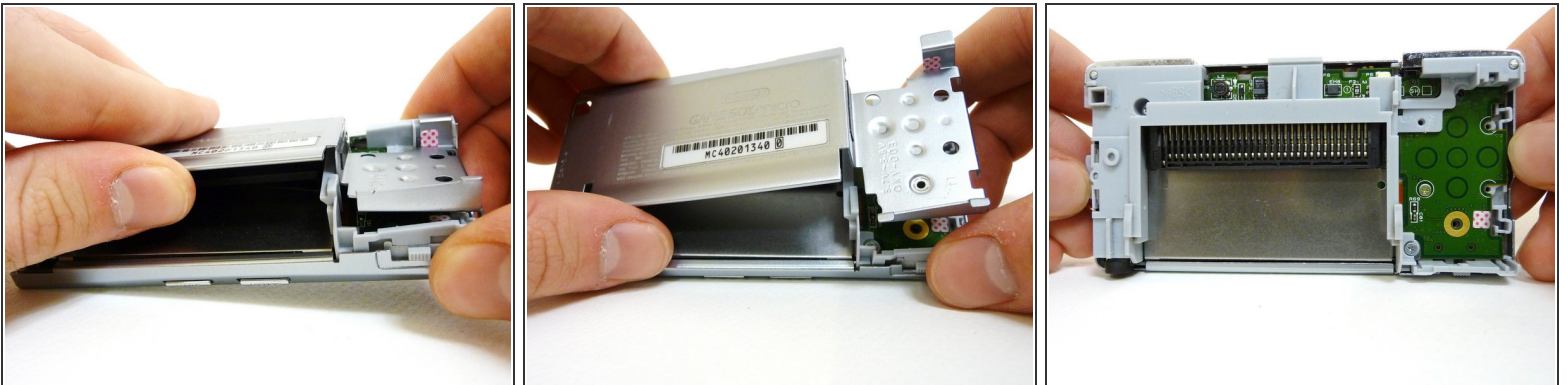
- Remove the two tri-wing screws on the top of the Game Boy and the two screws next to the volume/contrast switch.

Step 5



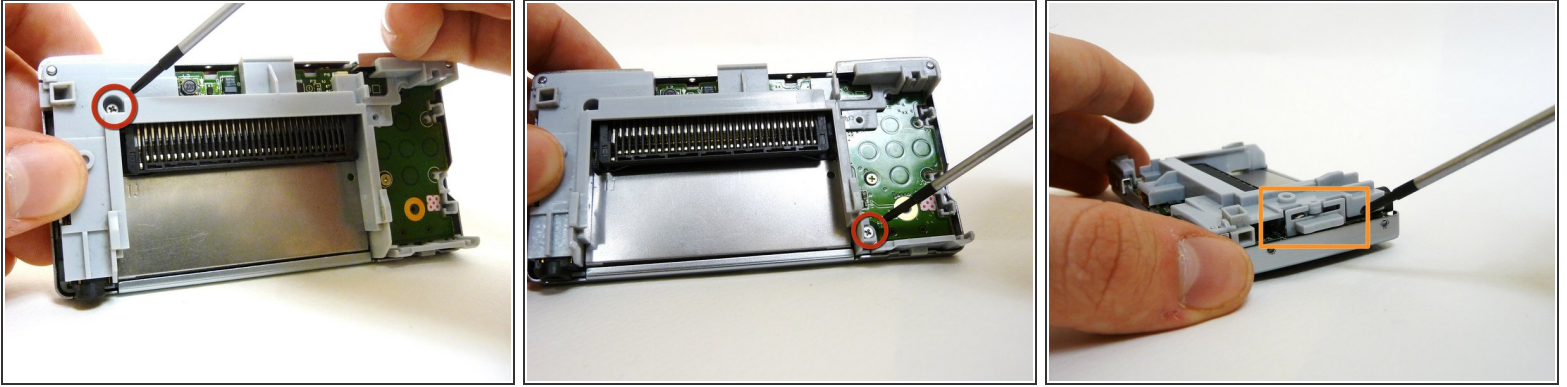
- Remove the three Phillips #00 screws.
- Remove the two tri-wing screws.

Step 6



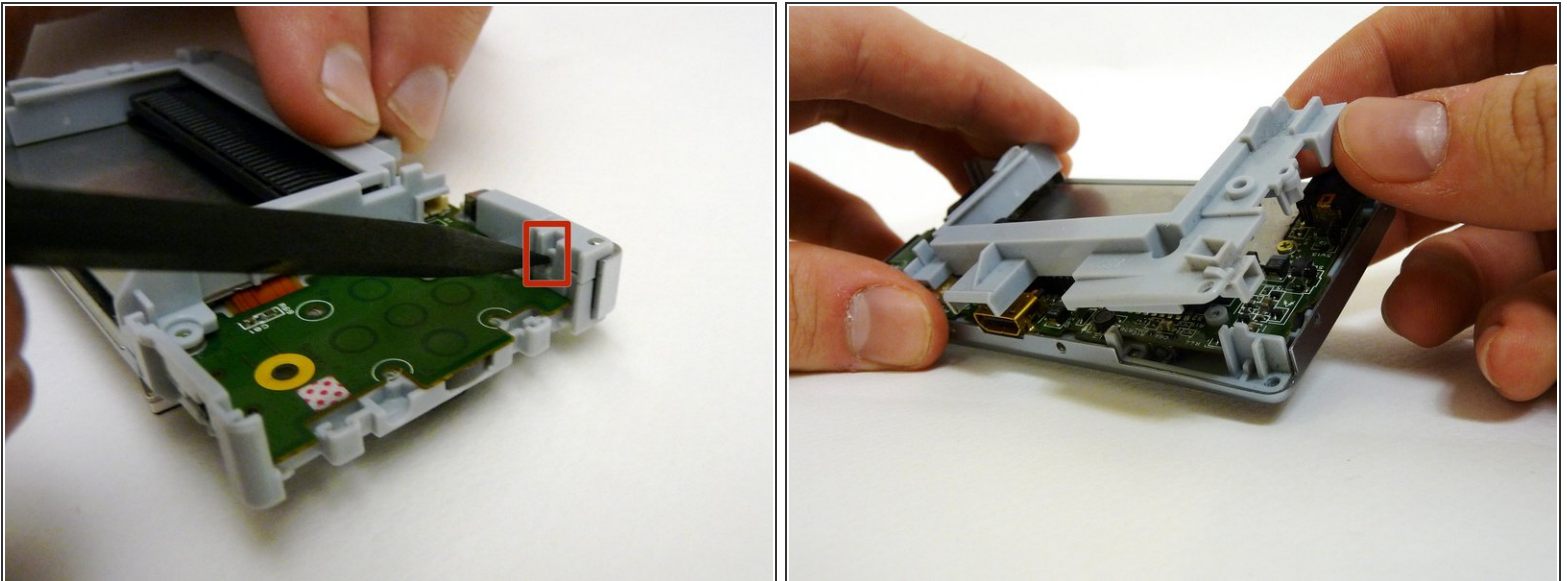
- Lift the back cover off of the Game Boy.

Step 7



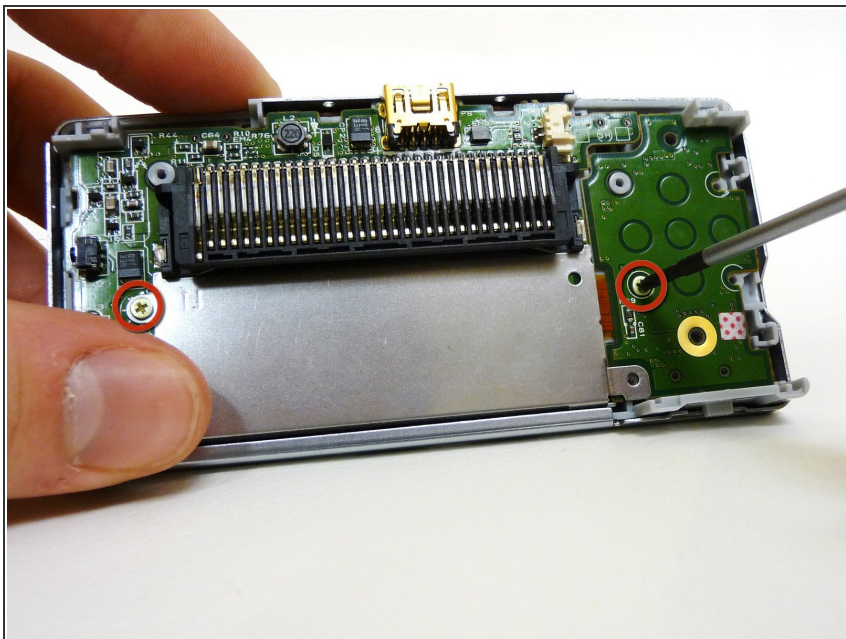
- Remove the two Phillips #00 screws from the plastic frame.
 - As you are pulling off the plastic frame, the shoulder buttons and the volume switch may fall out of the device.
- i** Underneath each shoulder button is a small spring. Do not lose them.

Step 8



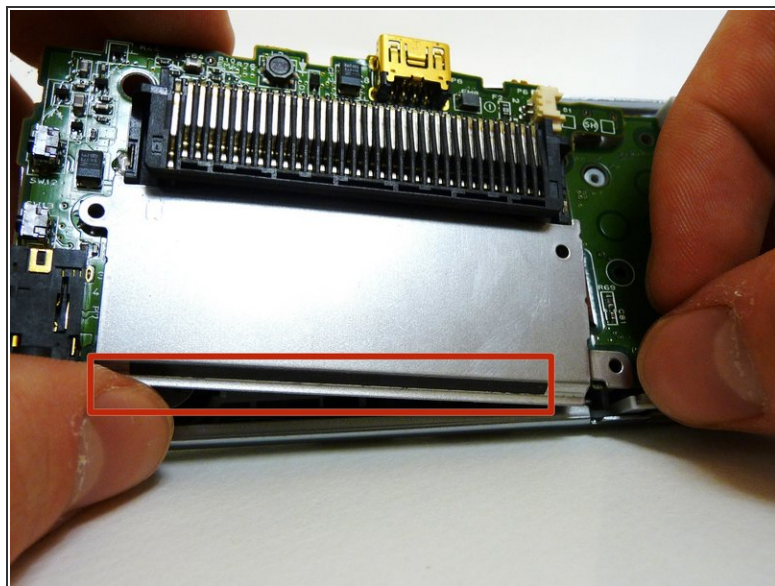
- With a spudger, depress the small clip on the lower right corner of the plastic guard.
- Grab the edges of the plastic frame and lift the frame off the motherboard.

Step 9



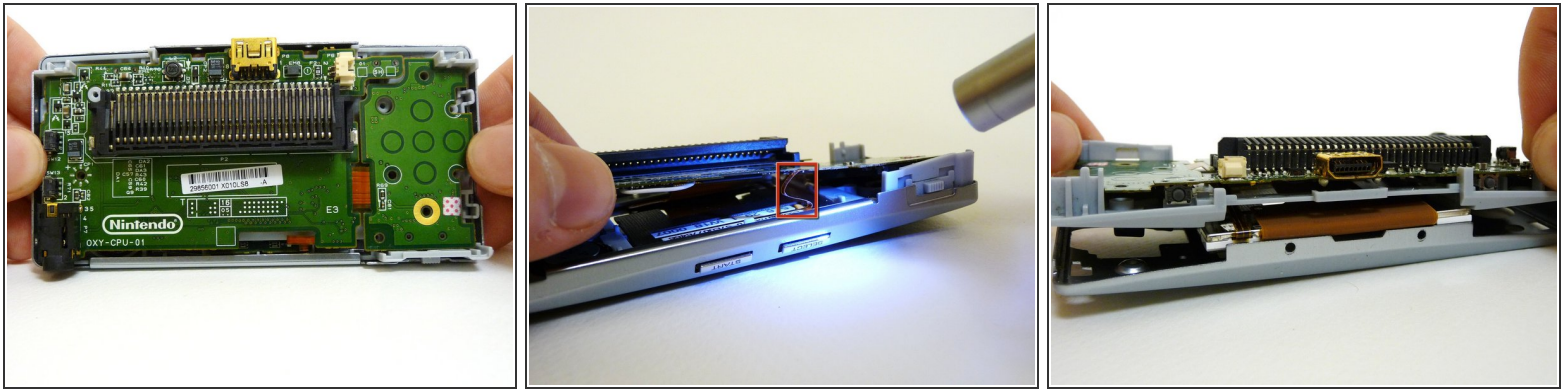
- Remove the two gold Phillips #00 screws from the motherboard.

Step 10



- With one hand, gently slide the top left end of the motherboard up and out of the front case.
- With your other hand, pull out the EMI shield until the tab comes out of the front case.
- Once the tab is pulled out from the bottom, slide the EMI shield down and out of the device.

Step 11



- The entire motherboard is now accessible.

⚠ Take extreme care when working with the motherboard to avoid damaging the device and its components.

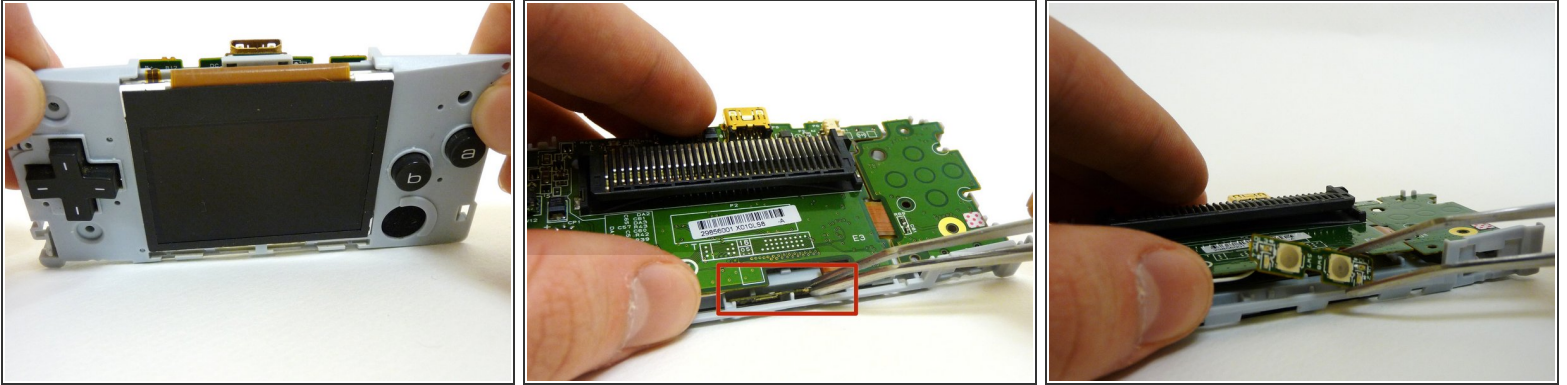
- A small ribbon cable connects the start and select buttons to the motherboard. It can rip very easily, so do not pull on it.
- Lift the motherboard and the front plastic cover assembly off of the front case.
- i** Once the front case is removed, the plastic on/off switch will fall out of place.

Step 12



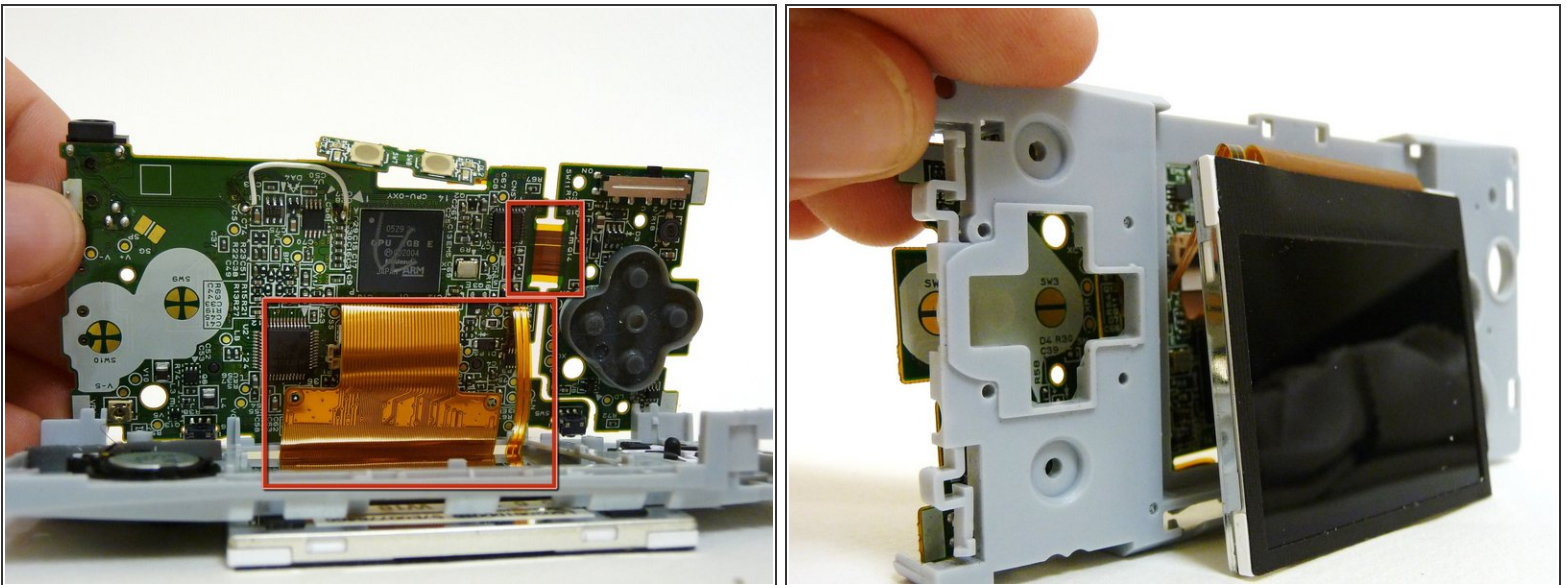
- When you remove the motherboard from the front case, the start and select buttons may fall out.
- If the buttons do not fall out, remove them with a pair of tweezers.

Step 13



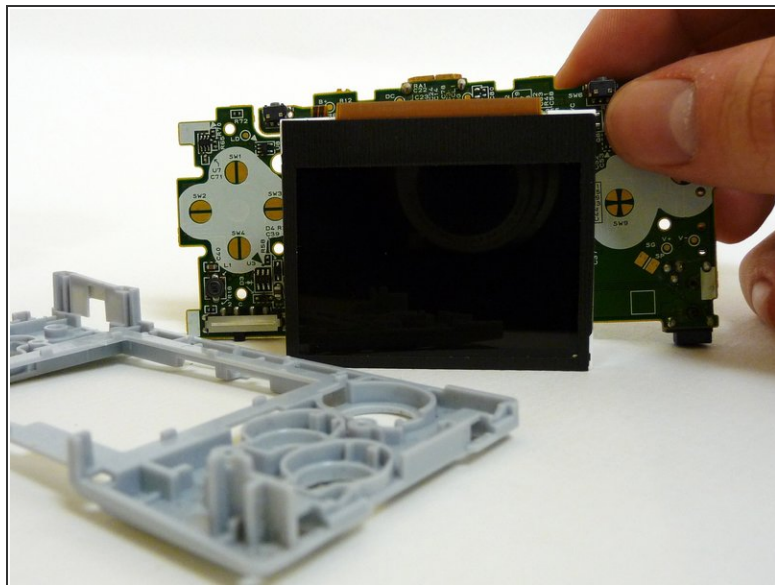
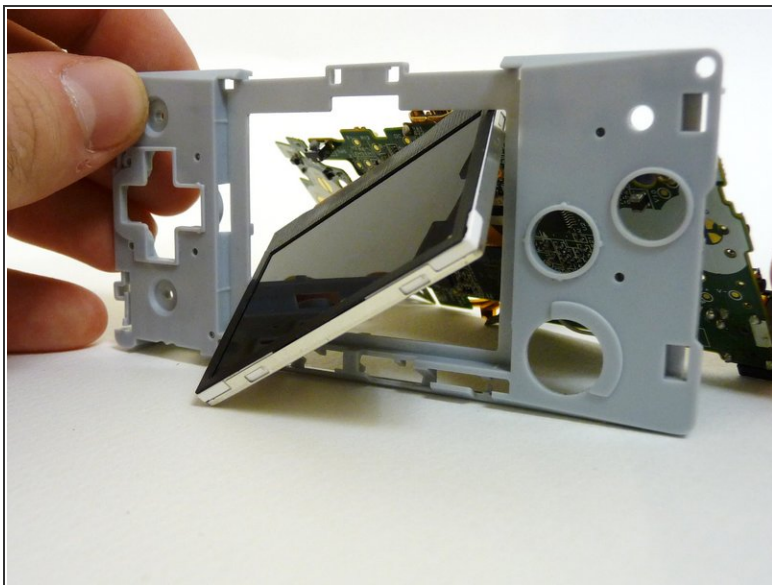
- Without the front case, you will be left with the motherboard and the plastic mount. The LCD screen is attached to the motherboard by a ribbon and can fall off the plastic mount.
- Using metal tweezers, grab the start/select board and slide it out gently.

Step 14



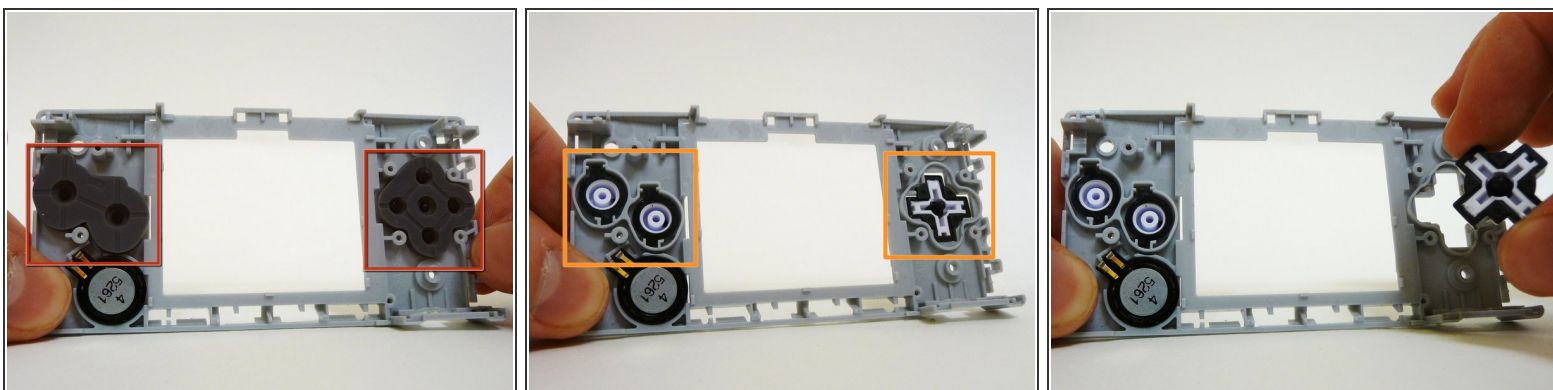
- Lift the entire motherboard assembly off the plastic guard.
- Take caution not to damage any of the gold ribbon cables on the motherboard.
- ⓘ The LCD screen is the only thing connecting the motherboard and plastic guard.

Step 15



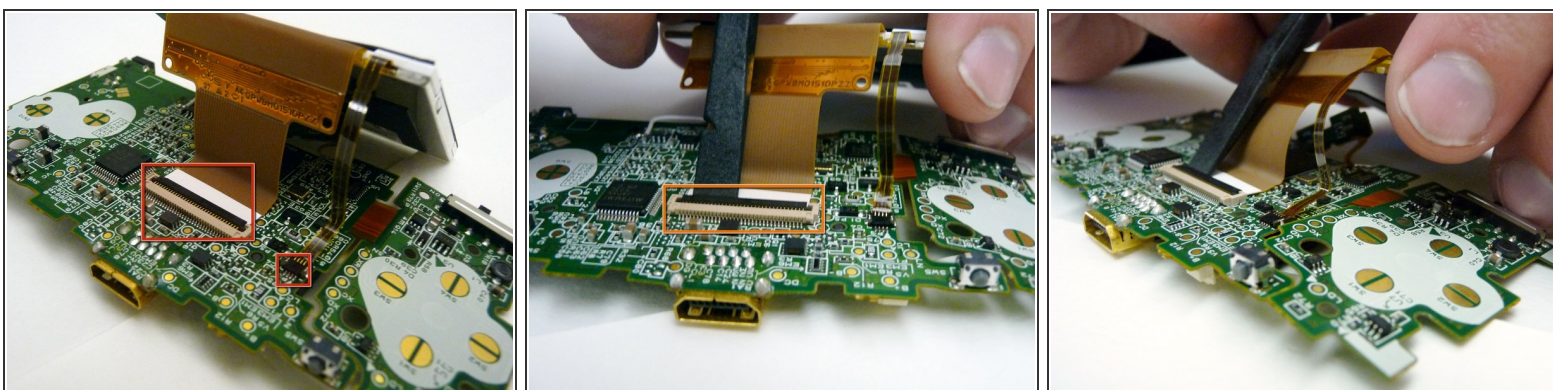
- To remove the LCD screen, carefully angle it until it is diagonal to the square hole in the plastic guard and slide it out.
- It is now possible to remove the entire motherboard assembly from the plastic guard.

Step 16



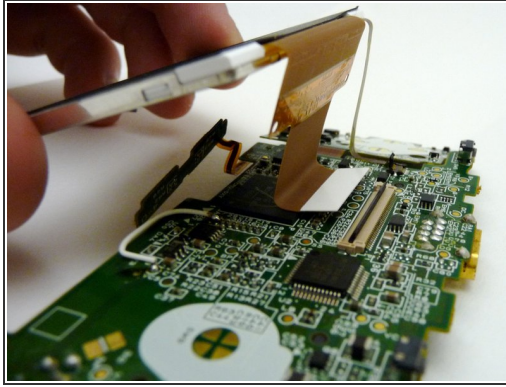
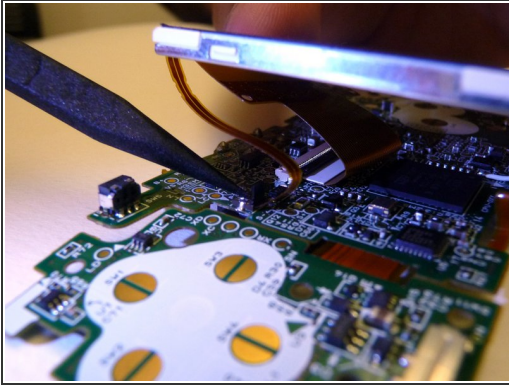
- On the plastic guard, there are two rubber pads that cover the buttons. Remove them.
- ⓘ These pads rest on the motherboard and sometimes stick to it. If they do, peel them off.
- With the rubber pads off, you may use your fingers to remove the buttons to clean or replace them.
- ☑ When returning the buttons to the guard, they have to be put back in exactly the way they were pulled out.

Step 17 — Motherboard



- The LCD screen is connected to the motherboard by two ribbon cables.
- Use a plastic spudger to disconnect the LCD's ZIF connector.

Step 18



- Use the tip of the spudger to lift the small, black tab holding the thin ribbon.
- With both tabs lifted, pull the ribbons off the motherboard and remove the LCD screen.

To reassemble your device, follow these instructions in reverse order.