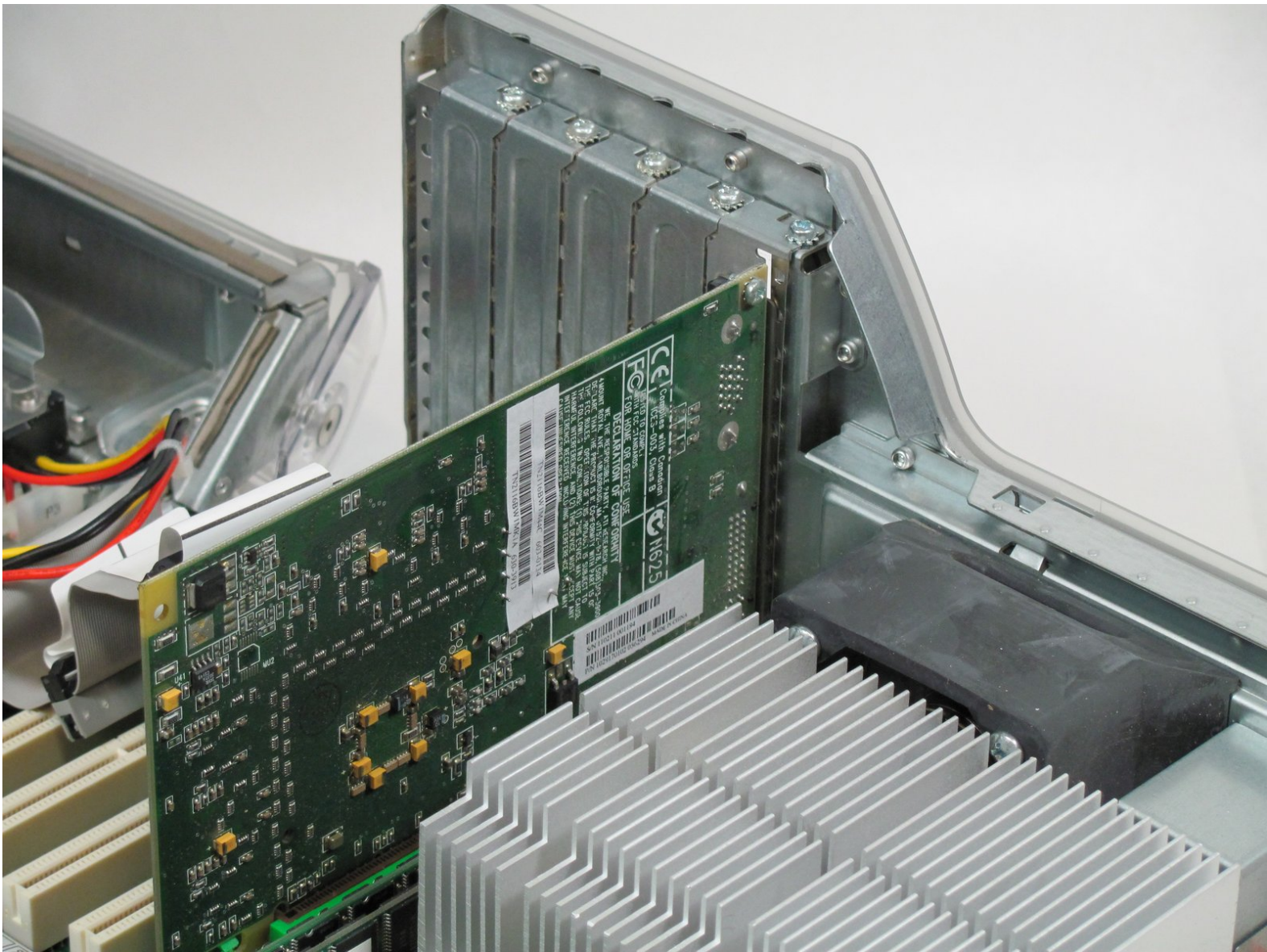




# Power Mac G4 Quicksilver video adapter card replacement

Written By: Cameron Christensen



---

## INTRODUCTION

This is hidden prereq.

---

### TOOLS:

- [Phillips #0 Screwdriver](#) (1)
-

## Step 1 — Opening the case



- The handle to open your computer is located on top of the right side panel.

## Step 2



- Grab the circular handle and pull outward.

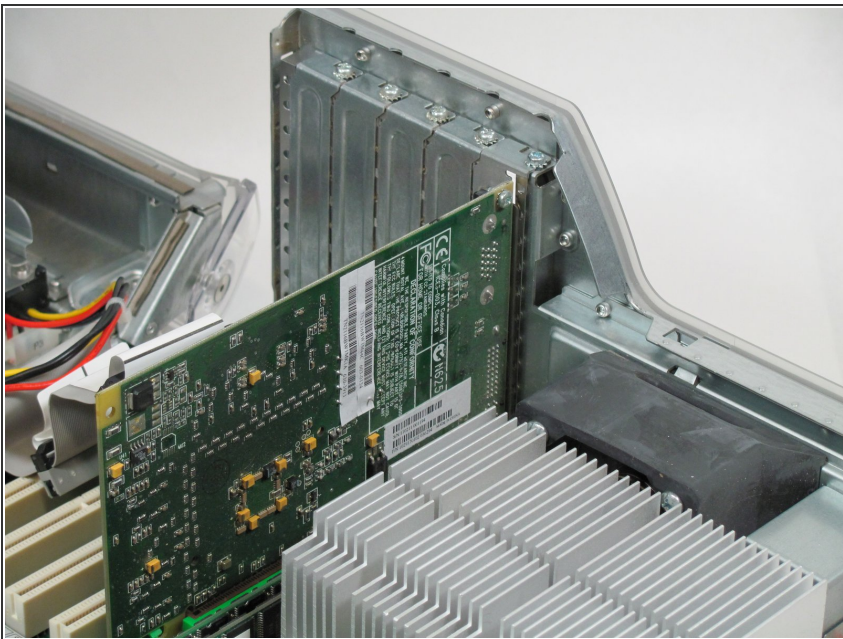


### Step 3



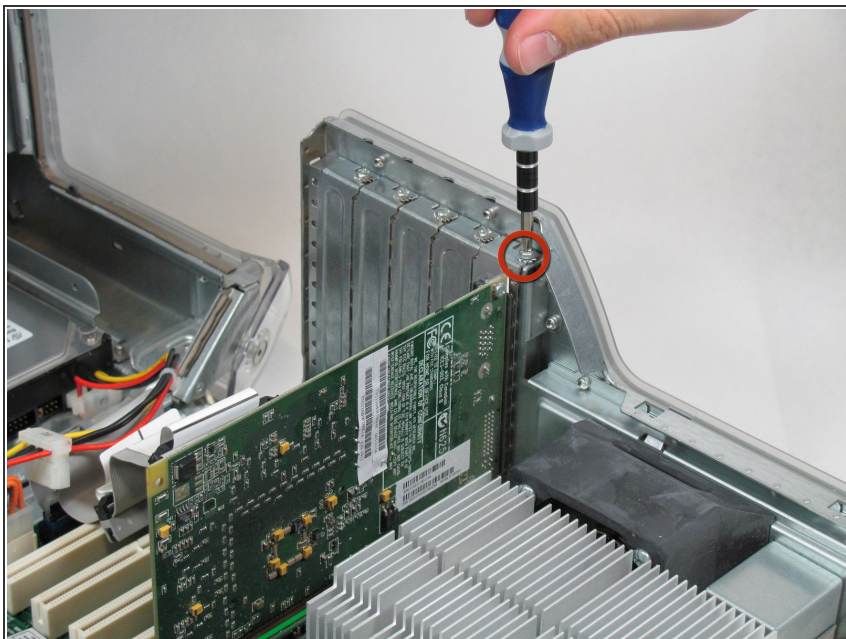
- Your computer is now open and ready for repair.

### Step 4 — Video Adapter



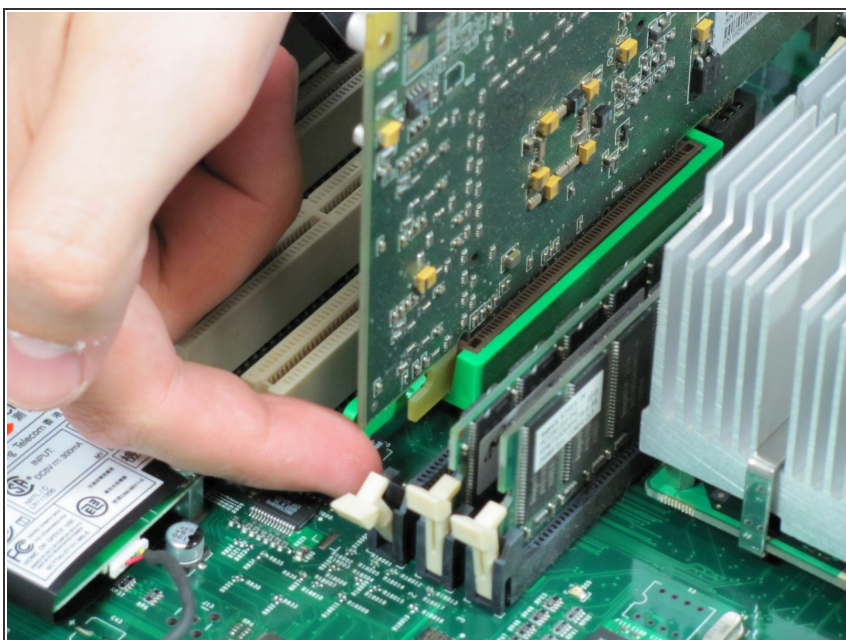
- This is your Power Mac G4's video adapter.

## Step 5



- Start by removing the screw holding the card to the chassis as shown.

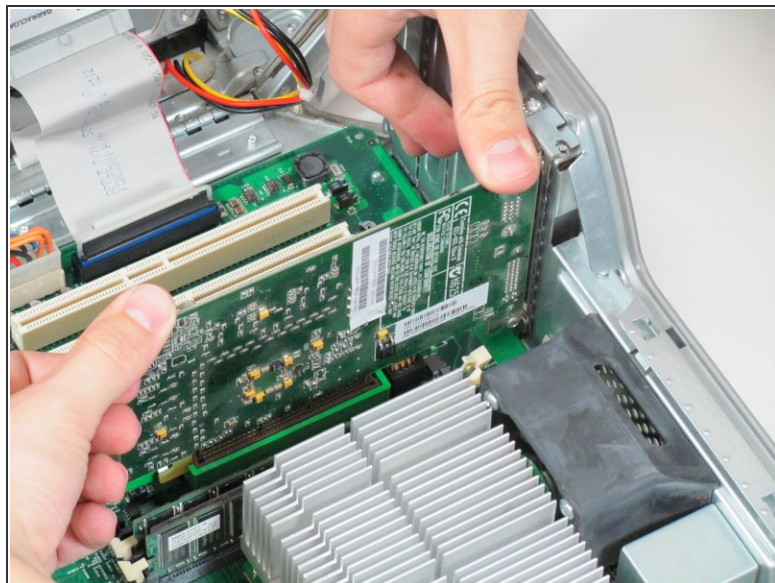
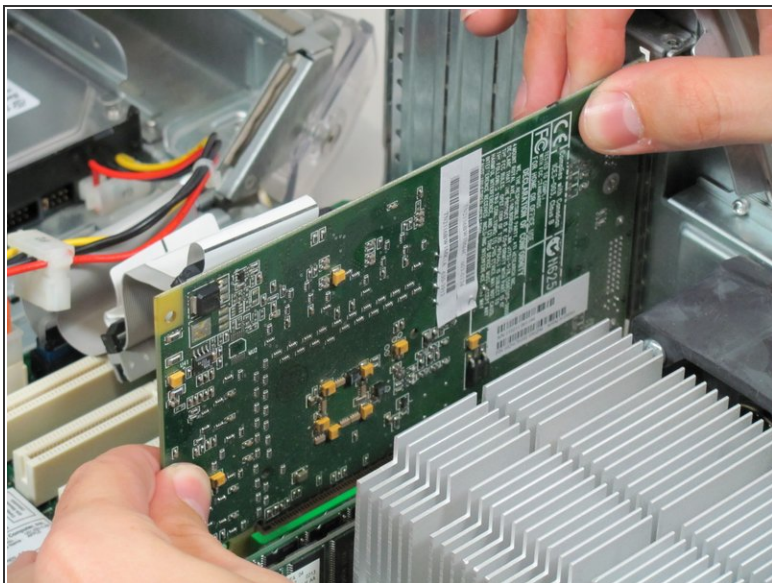
## Step 6



- Before lifting the card out, this small plastic tab needs to be pulled back there by releasing it entirely.



## Step 7



- With the tab and screw removed, lift the card straight out.
- ⓘ When putting the card back in, take care to apply even pressure across the top with your thumbs. This will avoid damaging the card.

To reassemble your device, follow these instructions in reverse order.