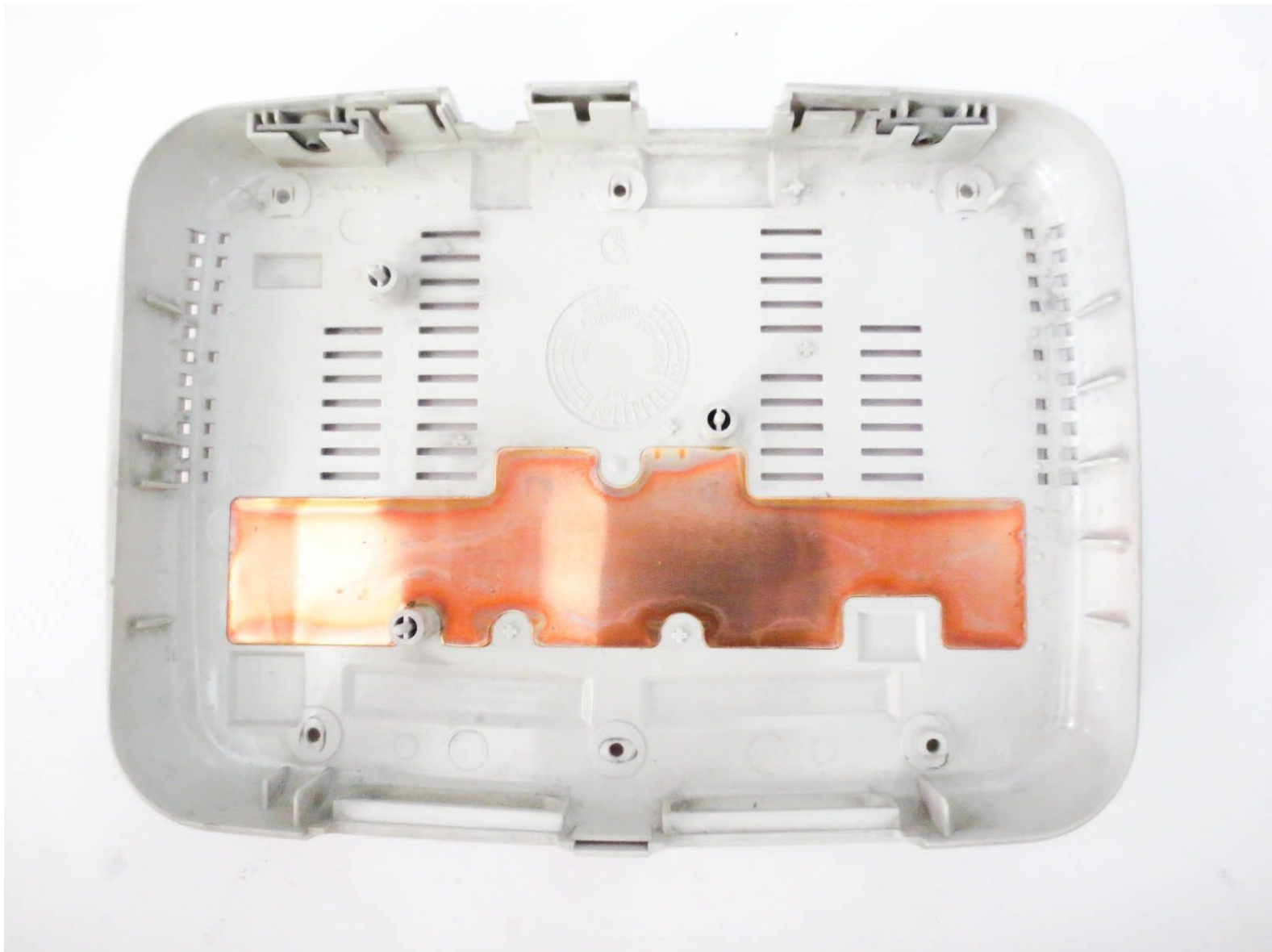




# PlayStation One Lower Case Replacement

This will guide you in replacing of your PlayStation One's Lower Case.

Written By: trickster





## TOOLS:

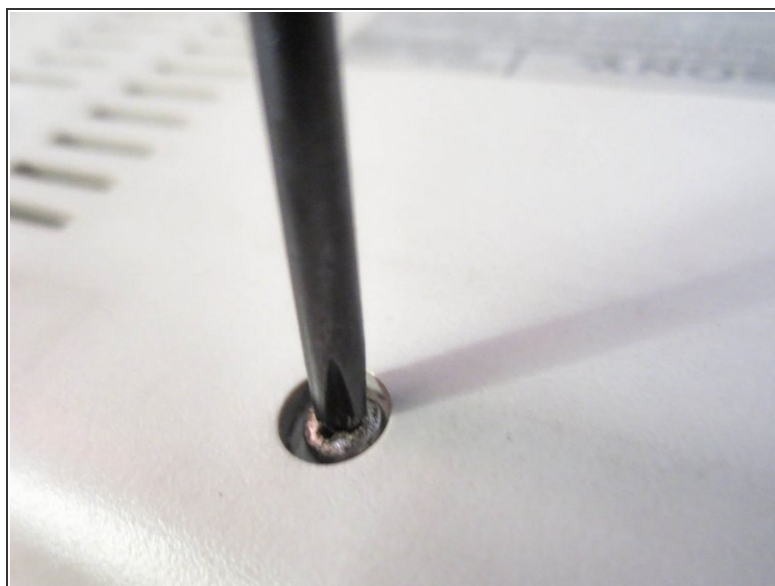
- [Phillips #1 Screwdriver](#) (1)
-

## Step 1 — Upper Case



- Remove all cables plugged into the PlayStation.

## Step 2



- Flip over the PlayStation and remove the six screws from the bottom.

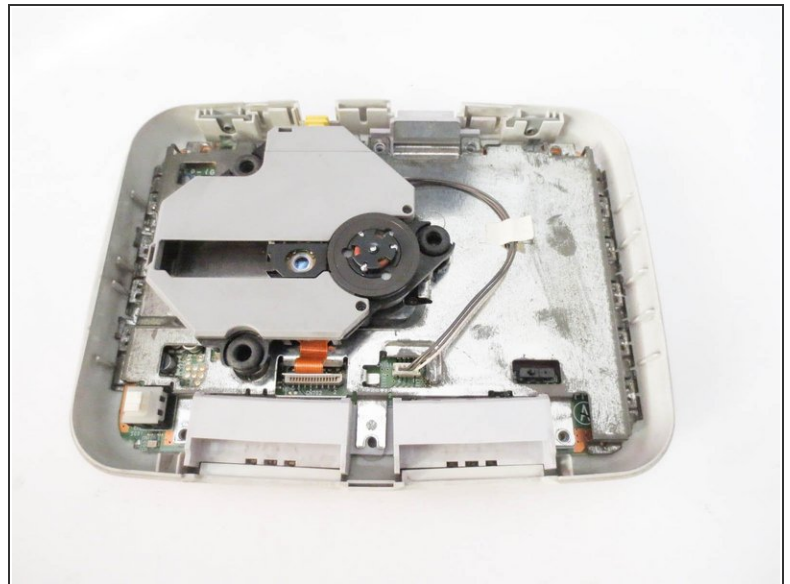
### Step 3



- Flip the PlayStation back.

⚠ There are no screws holding EVERYTHING inside the PlayStation so better hold it like a burger while flipping.

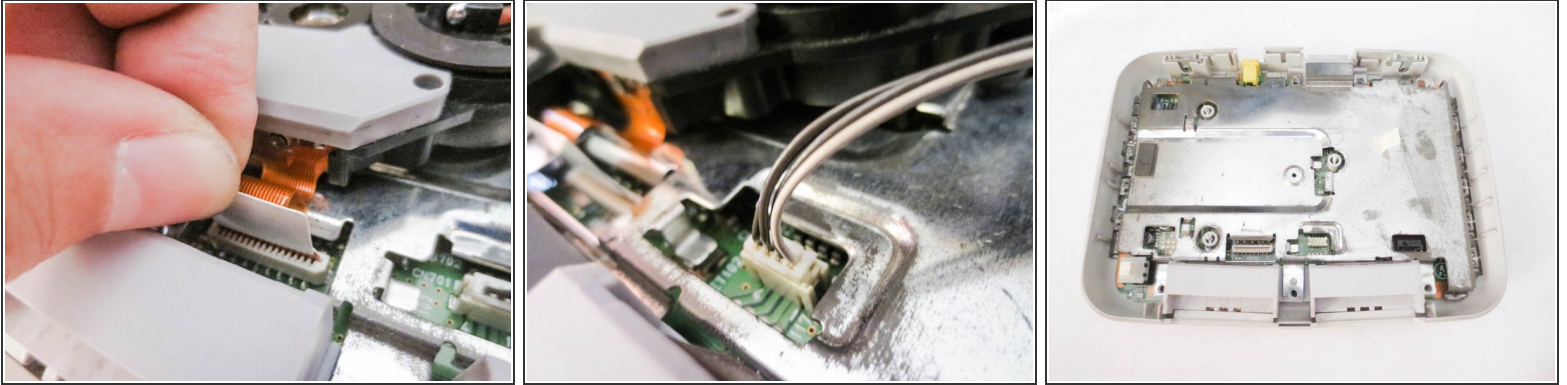
### Step 4




- Lift up and remove the upper case.



## Step 5 — Laser Assembly



- Disconnect the cables from the PSone's board.

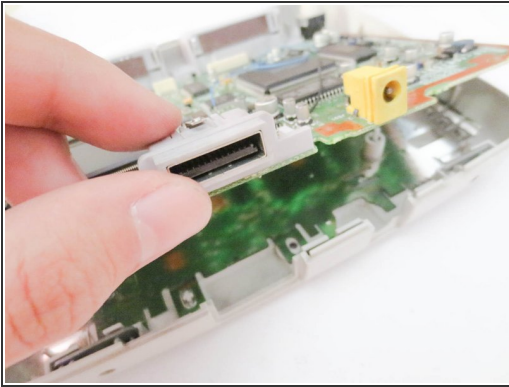
 Take extreme care when disconnecting the ribbon cable from motherboard. You risk damaging the cable if you're not careful.

## Step 6 — Mother Board



- remove the metal plate

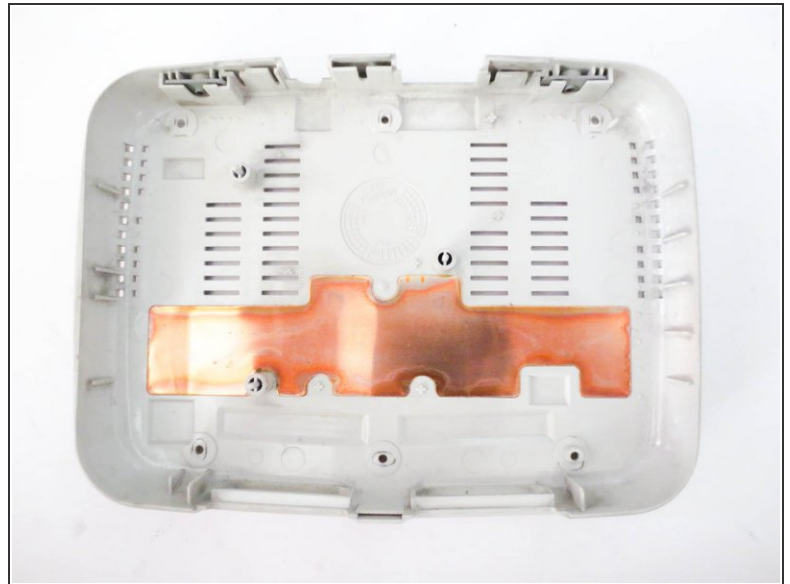
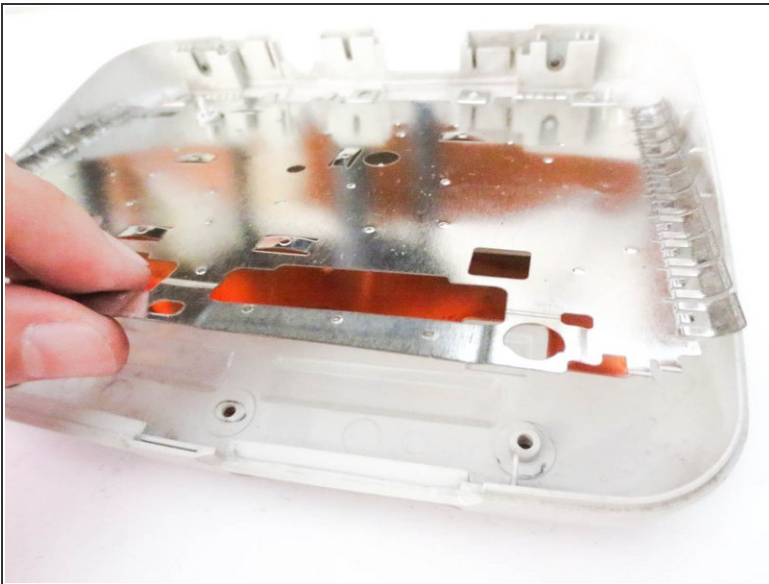
## Step 7



- remove the mother board by lifting the back.

**i** if you're having a hard time removing it, use your nail and lift the second controller port.

## Step 8 — Lower Case



- Remove the metal case.

To reassemble your device, follow these instructions in reverse order.