



Apple Studio Display M2454 USB port replacement

Written By: Dylan Perry



INTRODUCTION

There are two USB inputs on the Apple Studio Display M2454 monitor. If they are damaged and can not work properly they'll need to be replaced. The procedure for replacing these ports is simple however and should not require much time.

TOOLS:

- [2 mm Hex Screwdriver](#) (1)
 - [Phillips #2 Screwdriver](#) (1)
-

Step 1 — USB Ports



- The USB ports are located on the back side of the monitor, below the plastic cover and metallic panel; on the lower left hand side.
- The first step is to remove the plastic cover panel.
- To do so, remove the three 2mm hex screws on the monitor's stand, as well as the four 2mm hex screws located on the four corners of the back plastic cover panel.

⚠ After removing the mentioned screws, it is possible to take off the panels and began examining the inner components. Make sure main cable i pulled through plastic port.

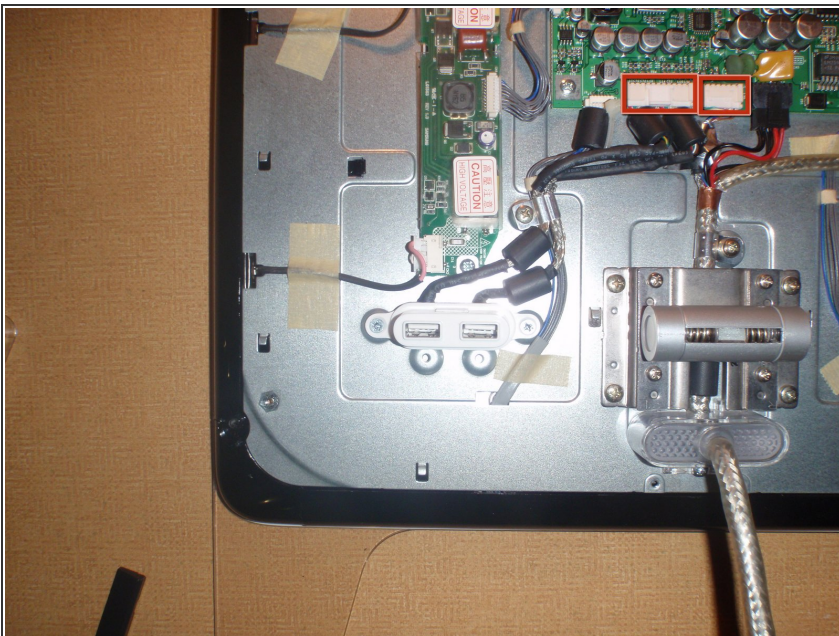
- For additional help removing the back panel, refer to the repair guide for the LCD Main Board.

Step 2



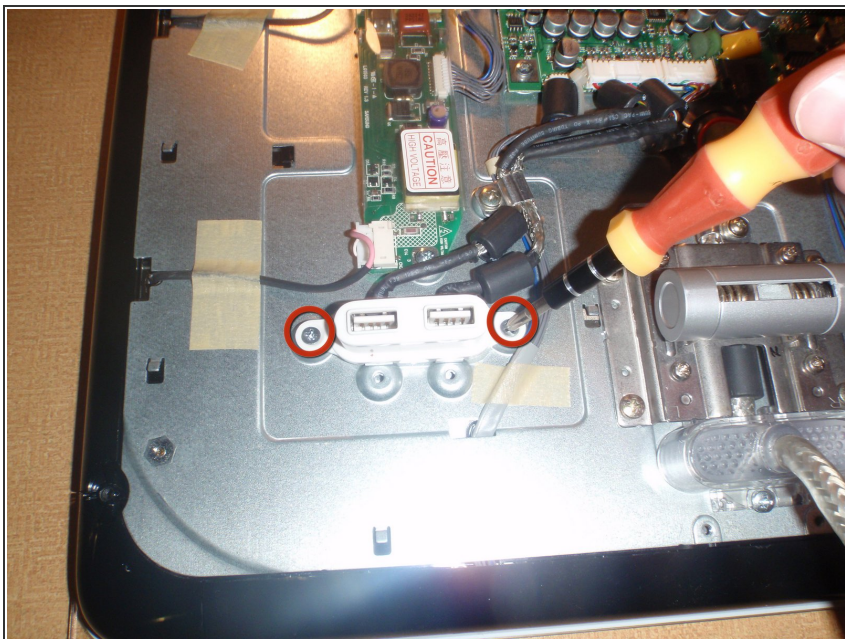
- Remove the three screws holding metal plate, one on the top in the middle, and two at the bottom by the main cable.
- Push the metal plate towards bottom of the monitor to release it from clips and remove.
- After popping off (removing) metal plate, you can now see all inner components, where the USB connector is on left side.

Step 3



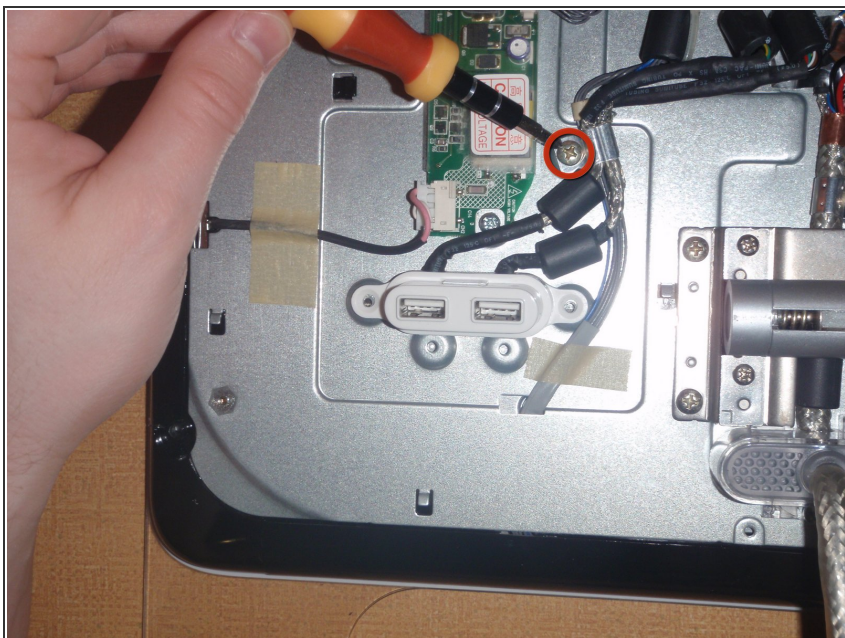
- There are two leads from the USB port to the LCD Main Board.
 - Remove the two white connectors by raising the tabs on top gently by hand or using a small pry tool.
 - Pull connectors away from the board while tabs are lifted.
- ⚠ Be gentle with tabs, they break easily.

Step 4



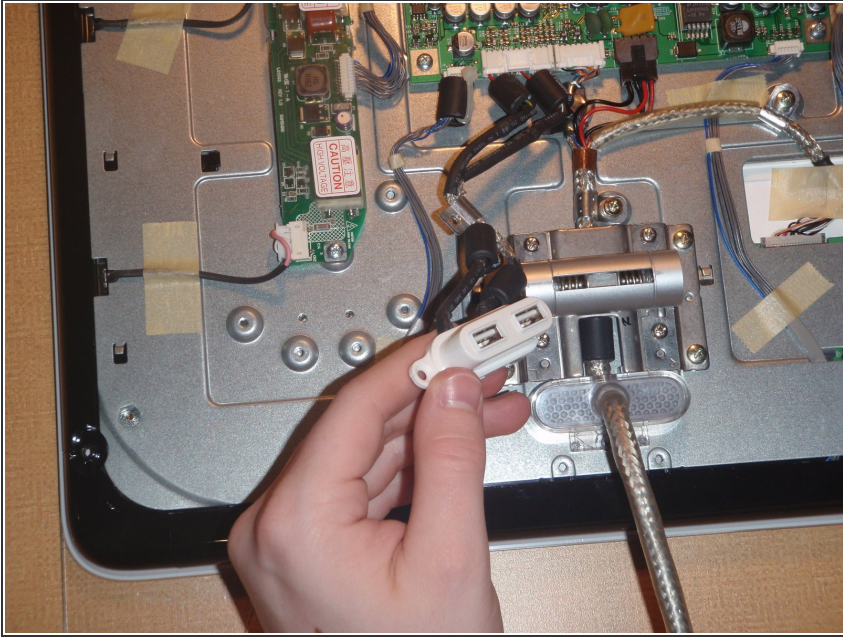
- Remove the two phillips head screws on the sides of USB port, using #2 phillips head screwdriver.

Step 5



- Remove the single screw on the cable hold-down, using #2 phillips head screwdriver.

Step 6



- Finally pull USB port away from monitor.
- To insert the new USB port, simply follow these steps in reverse using your new part.