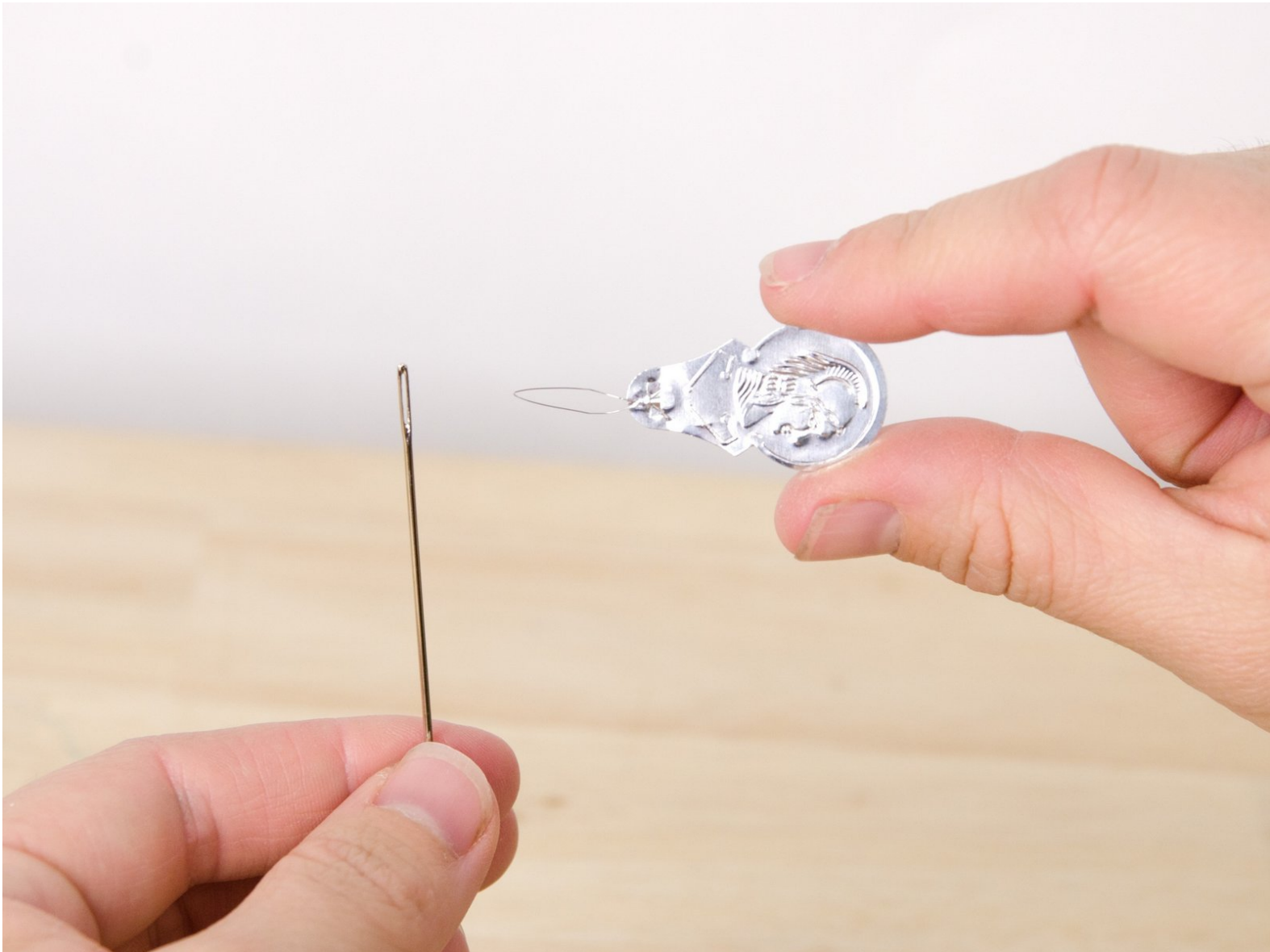




How to Use a Needle Threader

Use a needle threader to thread a needle.

Written By: Brittany McCrigler



INTRODUCTION

Having trouble getting the thread though the eensy-weensy eye of that needle? Not to worry—a needle threader makes the task simple.



TOOLS:

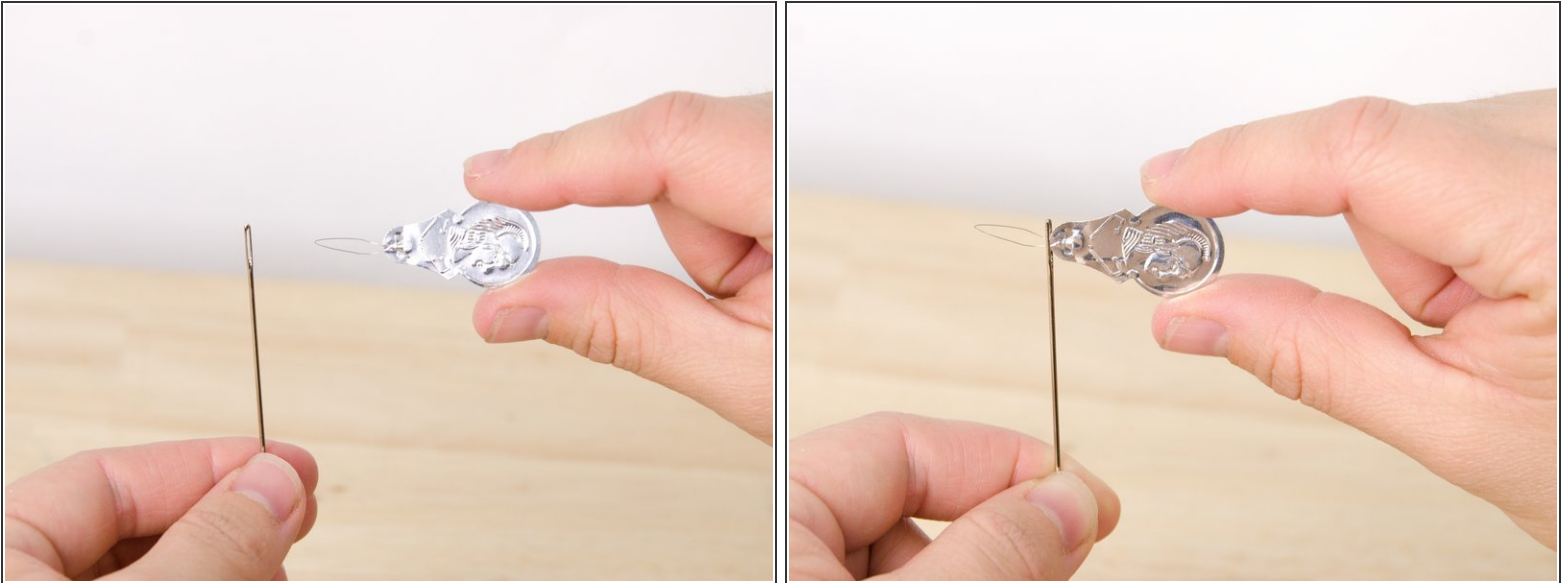
- [Needle Threader](#) (1)
- [Hand Sewing Needle](#) (1)



PARTS:

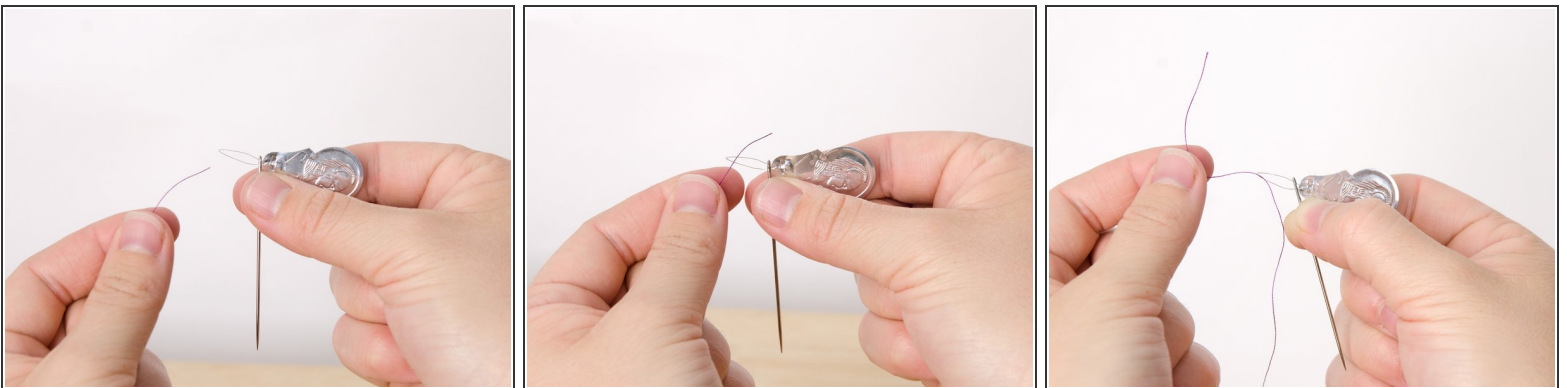
- [Spool of Thread](#) (1)

Step 1 — How to Use a Needle Threader



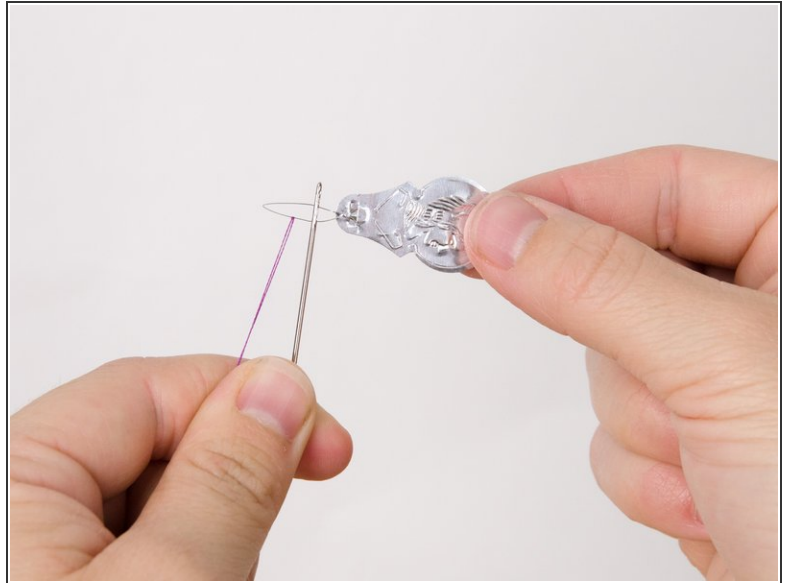
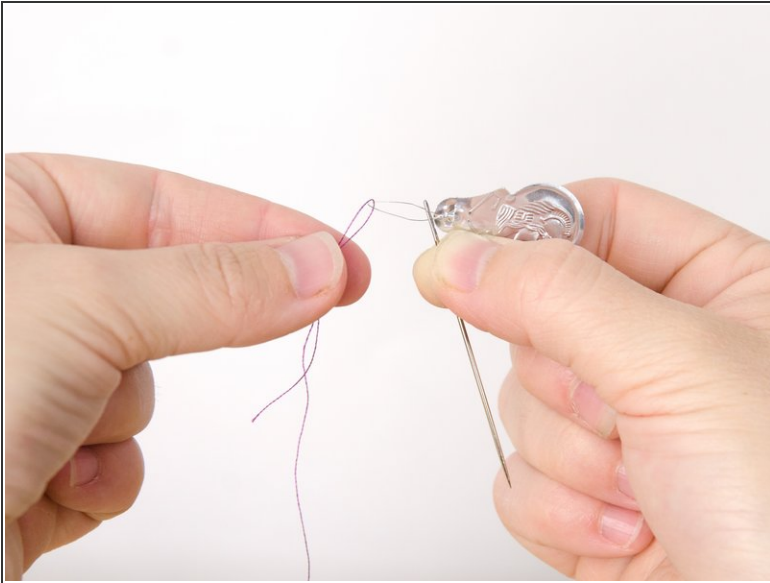
- Take the needle threader in one hand, and the needle in your other hand.
- Insert the wire loop on the needle threader through the eye of the needle.

Step 2



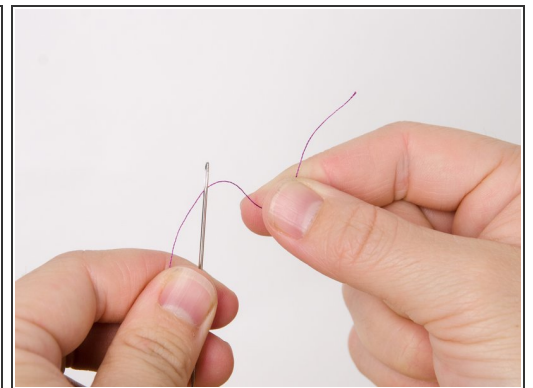
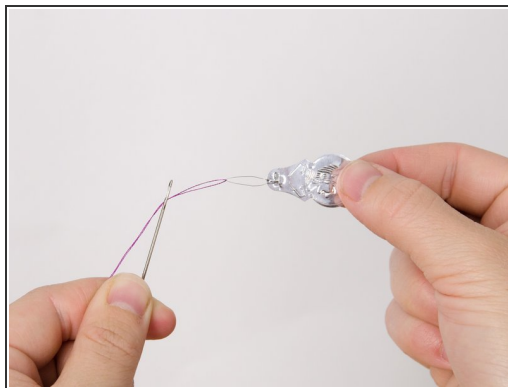
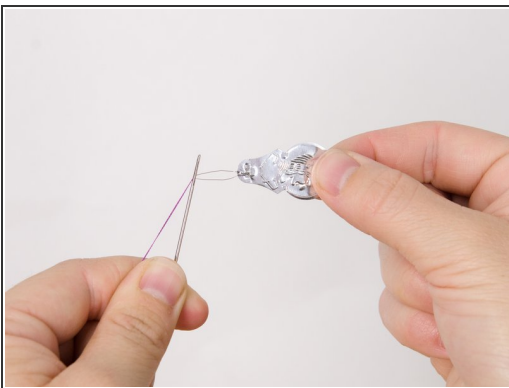
- Hold both the needle threader and needle in one hand, while keeping the loop of wire on the needle threader through the eye of the needle.
- Insert your thread through the loop of wire on the needle threader.
- Pull the thread through the loop so that you have a tail of least a few inches in length.

Step 3



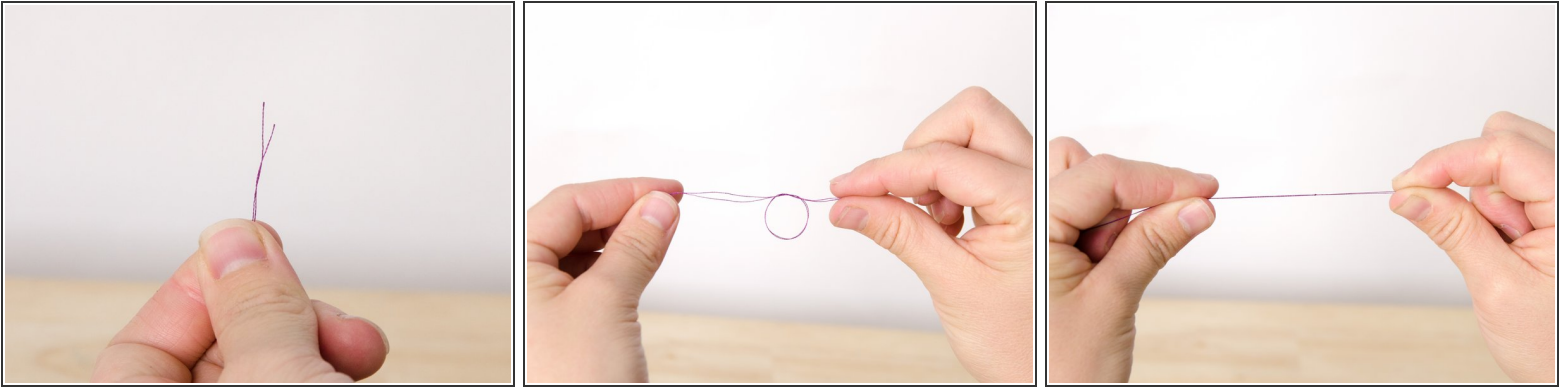
- Fold the tail over to meet the other thread.
- Hold both lengths of thread together.

Step 4



- While holding both threads, pull the wire loop of the needle threader out of the eye of the needle.
- Once the wire loop is out of the eye, release the tail end of the thread.
- Pull the needle threader off the thread. This will bring the tail end through.

Step 5



- Pull the tail end of the thread until both threads are equal in length.
- Holding both lengths of thread together, tie a knot near the end and pull it tight.
- ⓘ This will trap the needle in the loop of thread and allow you to sew with doubled thread. If you prefer to sew with a single thread, tie a knot in only one of the threads, not both.