



Repairing Polaroid One-Step 600 Shutter

This repair guide will show you how to replace...

Written By: Kimberly



INTRODUCTION

This repair guide will show you how to replace the shutter in your Polaroid camera. However, you should be careful with your Polaroid, as the plastic is very fragile.

TOOLS:

Spudger (1)

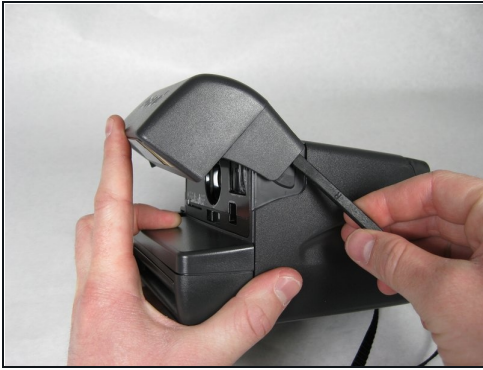
Step 1 — Repairing Polaroid One-Step 600 Shutter



⚠ THIS REPAIR GUIDE IS VERY DIFFICULT AND SHOULD ONLY BE FOLLOWED IF YOU HAVE EXPERT MECHANICAL EXPERIENCE.

- Open the flash/ lens compartment of the Polaroid camera to a 30 degree angle with the horizontal.

Step 2



- Separate the flash section of the camera from the main body by unhooking the sides.

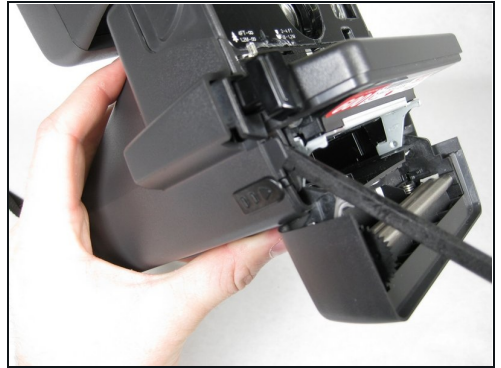
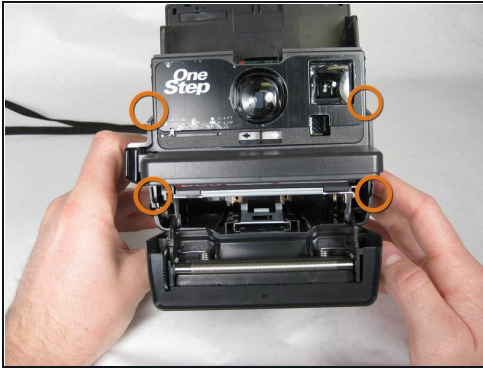
⚠ BE CAREFUL NOT TO YANK THE TWO SECTIONS APART BECAUSE THE BAND WIRE STILL ATTACHES THEM!

Step 3



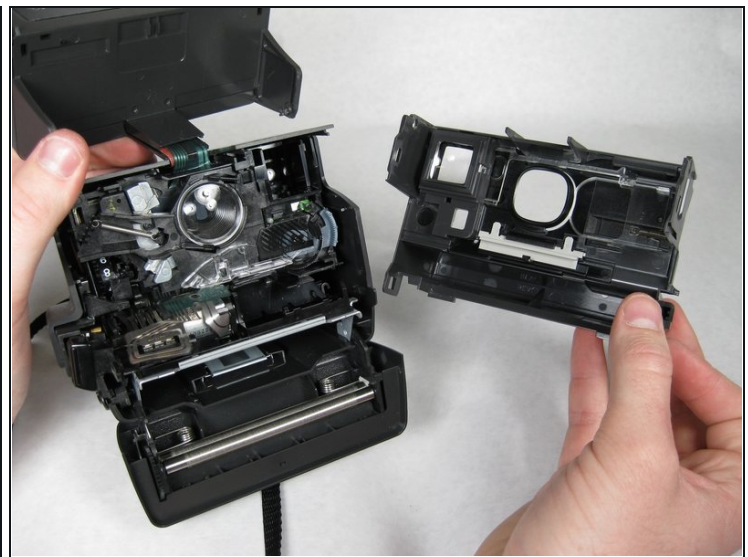
- Open the battery/ cartridge compartment fully.

Step 4



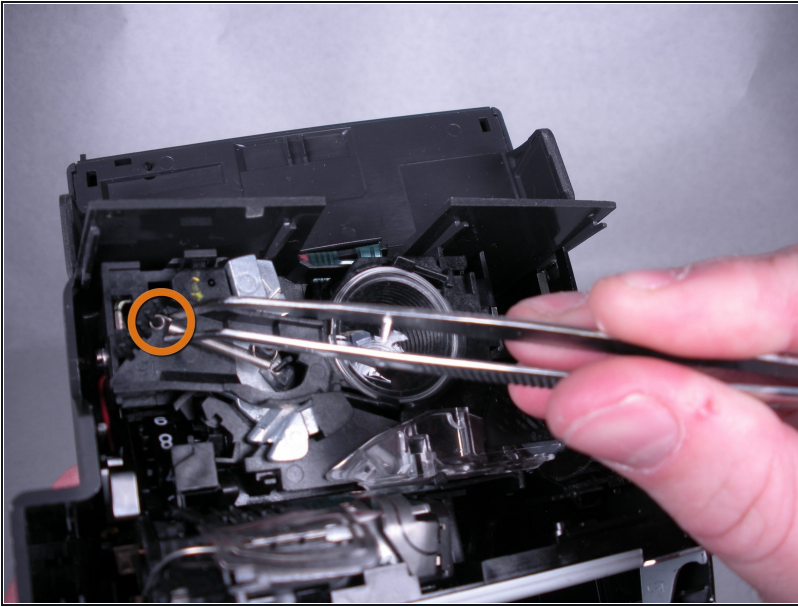
- Insert spudger in between face of camera and sides where the four tabs are located.

Step 5



- Once tabs are released, pull face of camera straight out.

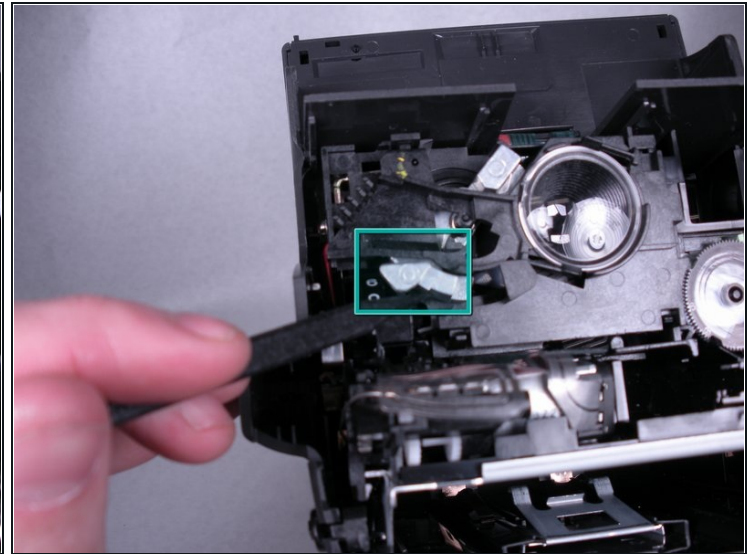
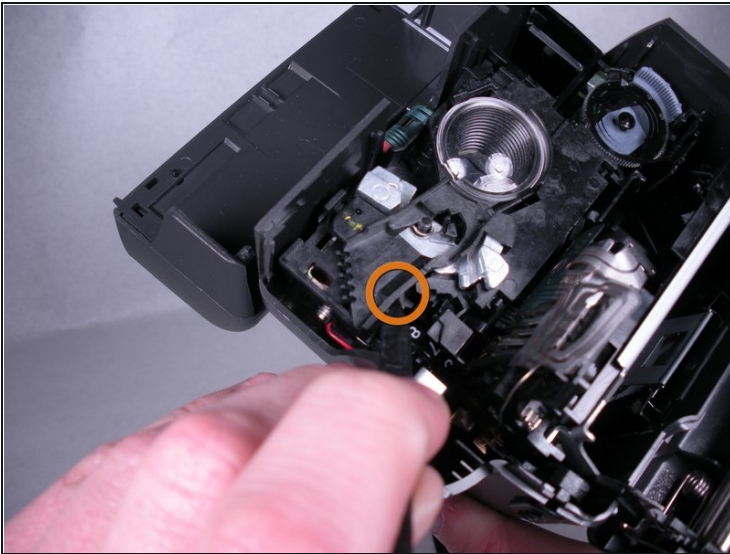
Step 6



- Carefully use [tweezers](#) to remove the spring from the hooks.

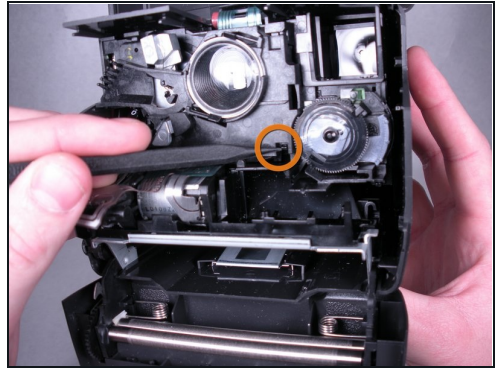
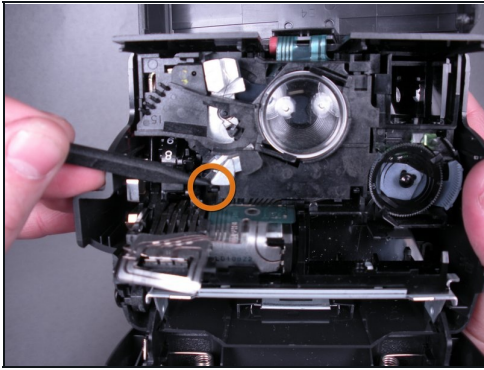
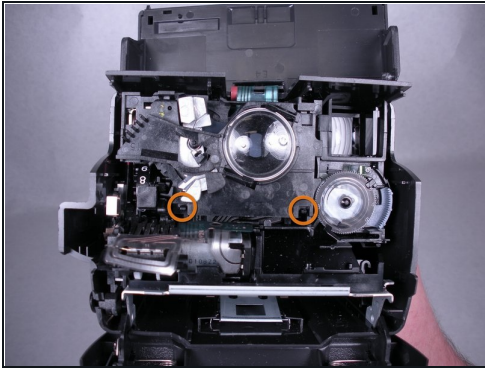
⚠ CAUTION: You may lose the spring if it pops off the hooks.

Step 7



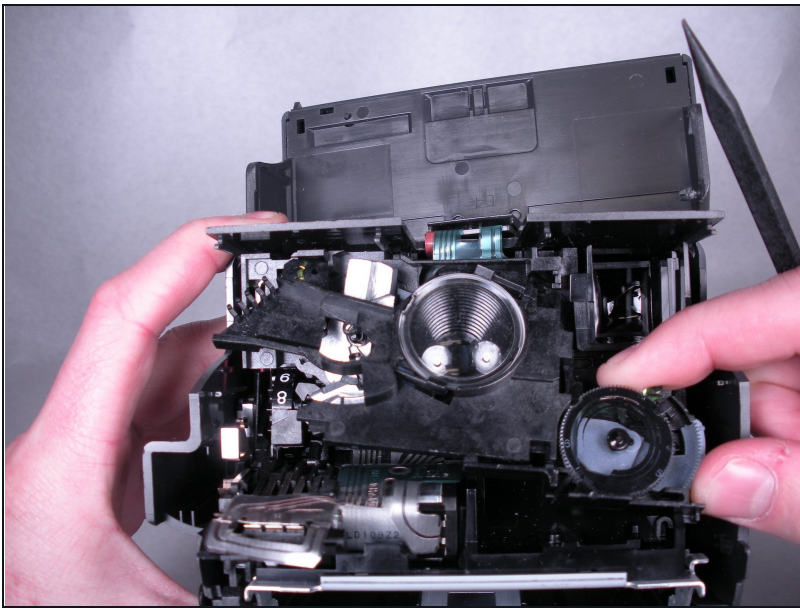
- Use the spudger to release the latch for the shutter mechanism.
- Rotate the shutter mechanism clockwise until it stops.
- ① If latch was successfully released, shutter mechanism should touch top plastic brace.

Step 8



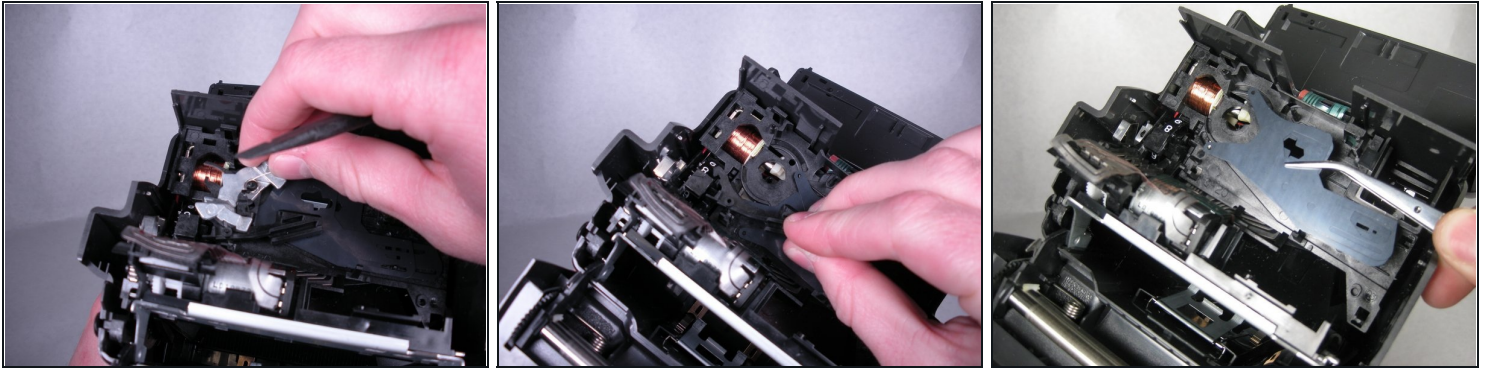
- Release the two tabs that hold lens plate in position.

Step 9



- Remove the lens plate by pulling down, then away from the camera.

Step 10



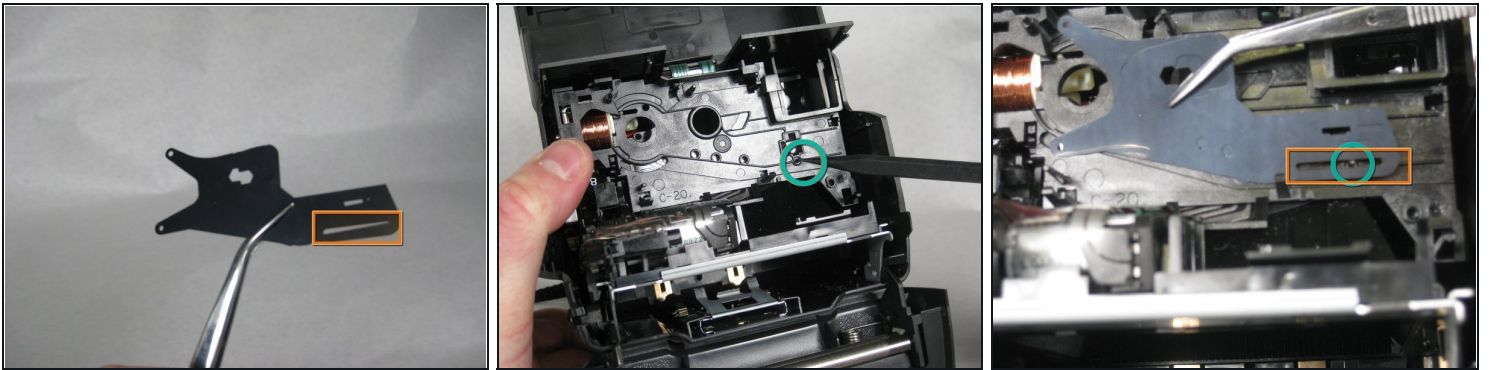
- Remove the shutter mechanism from the camera.
- Remove black latch piece from the camera.
- Remove shutter plates from the camera.

Step 11



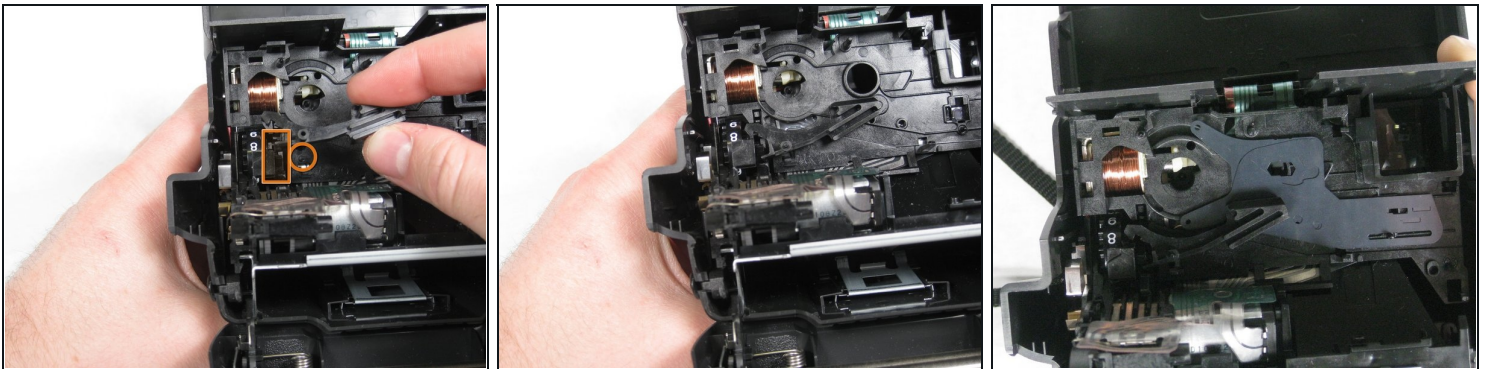
- To replace the shutter pieces in the camera, first make sure they are in the proper order.
- The shutter piece at the bottom of the first picture belongs on the bottom.
- The shutter piece in the middle of the first picture goes in the middle (second picture).
- The shutter piece at the top of the first picture goes on top (third picture).

Step 12



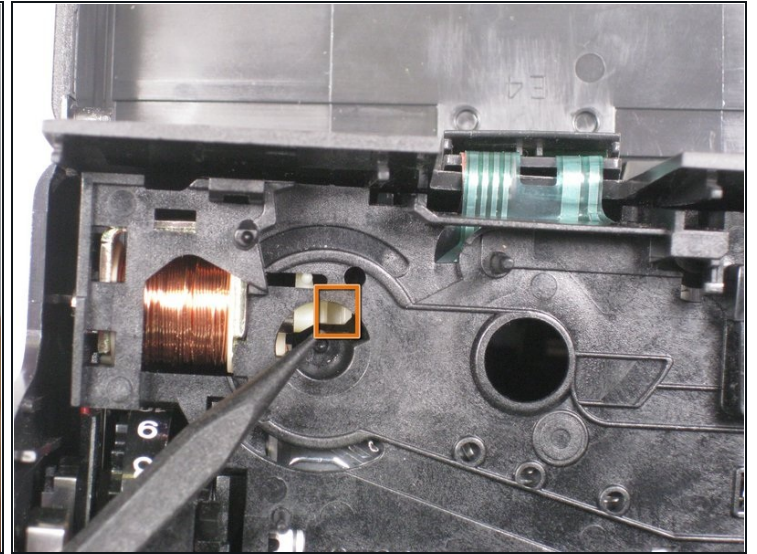
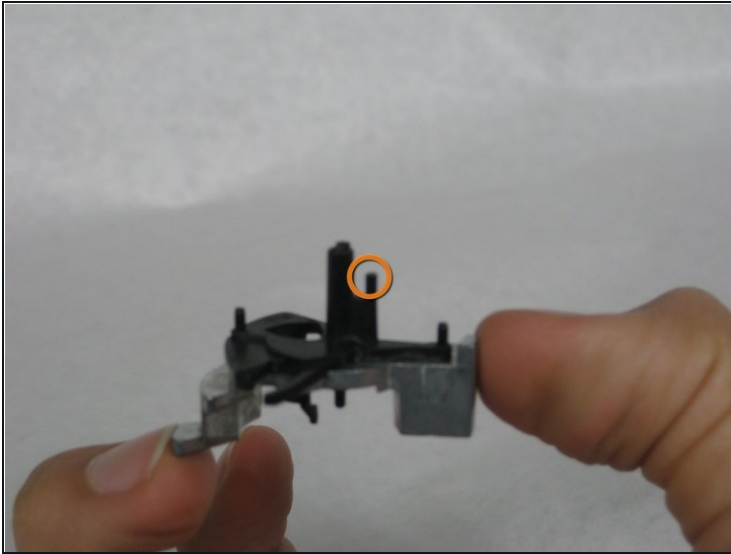
- By looking at the first picture, line up the long, skinny slots on the three shutter pieces.
- In the second picture, notice the pin inside the circle.
- Line up the slots in the shutters with the pin inside the camera as shown in the third picture.

Step 13



- ⓘ NOTE: The shutter pieces are not included in the first two pictures of this step because they slide around too easily for us to take pictures with them in the camera.
- Put black plastic piece back into camera, making sure to slide tab into slot (rectangle) and onto the pin (circle).
 - Final assembly for this step should look like the third picture.

Step 14

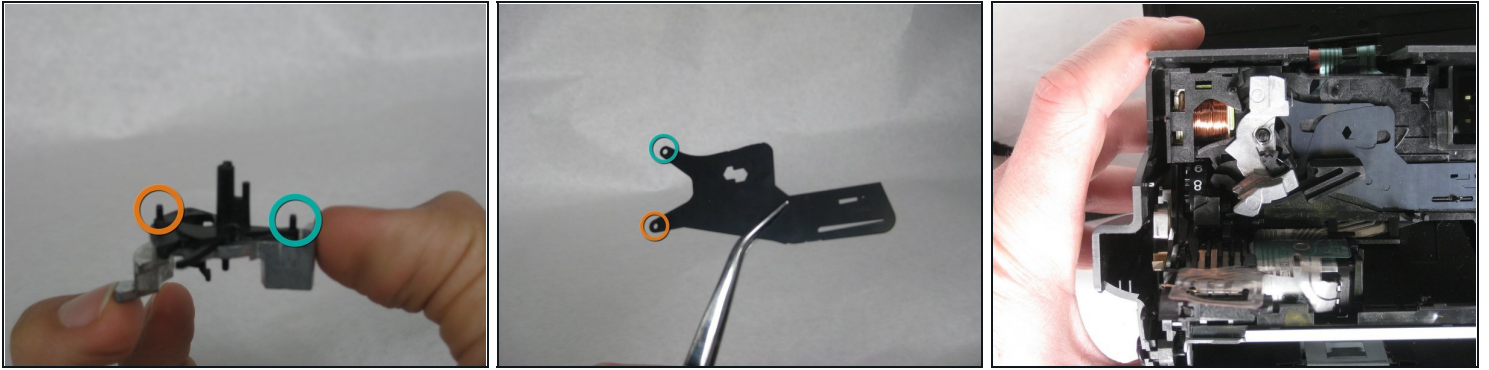


⚠ CAUTION: The next two steps are incredibly difficult!

- First, you must align the tab (circled) with the slot (rectangle).

⚠ Do not put pieces together until after reading the next step!!!

Step 15



★ REMINDER: This step is very difficult and may require multiple attempts.

- Align teal and orange circled tabs from the first picture with the respective teal and orange holes in the shutter pieces.
 - After the shutter mechanism is placed into the camera, make sure all three shutter pieces are attached correctly.
 - ⓘ NOTE: When correctly attached, the shutter pieces will slide in opposite directions when the shutter mechanism is rotated.
 - To finish putting the Polaroid back together, follow steps 9 through 1 in reverse.
-