



# Conair Cord-Keeper 169XR Handle Cover Replacement

You will look at this short guide to get to a...

Written By: Candace



# INTRODUCTION

You will look at this short guide to get to a place where you can replace the On/Off Switch or Cool Down Button.

---

## TOOLS:

Phillips #2 Screwdriver (1)

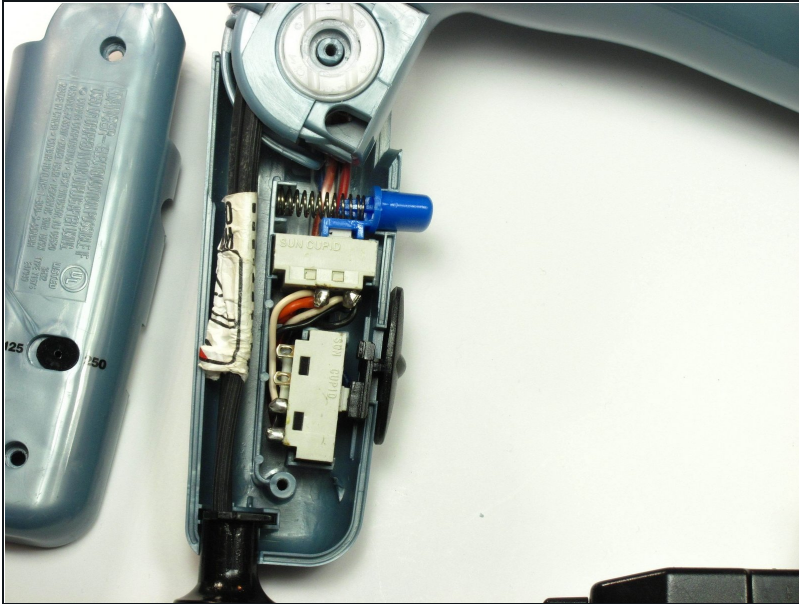
---

### Step 1 — Handle Cover



- Unscrew the **two 18 mm long Phillips #2** screws on the side of the hair dryer.

## Step 2



**⚠ Be cautious of pieces that can possibly fall out when removing the face of the handle.**

- Once you have taken the screws out, take the top half of the handle off by lifting it off of the dryer.

---

To reassemble your device, follow these instructions in reverse order.