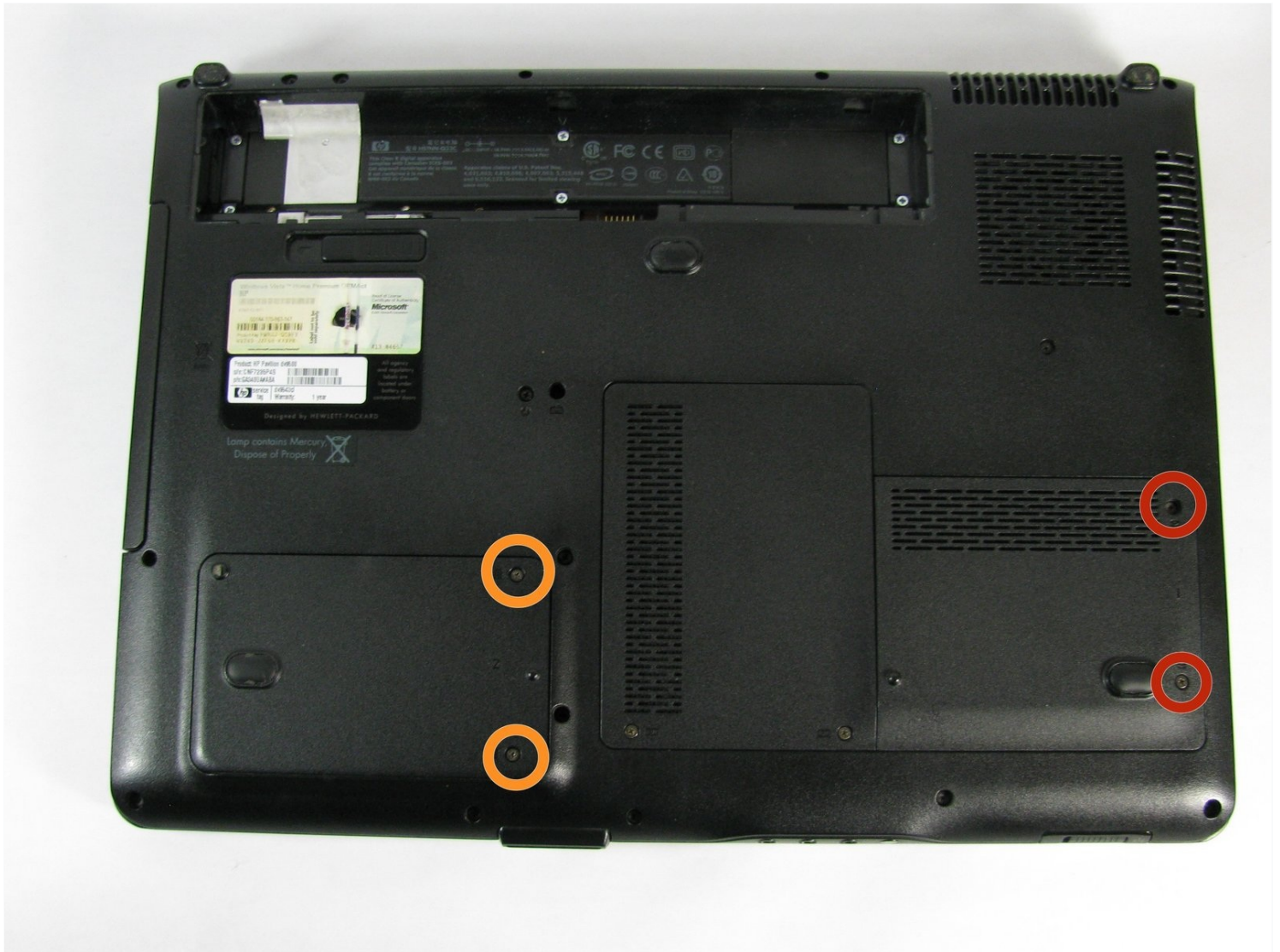




HP Pavilion dv9000 Hard Drive Replacement

In an age where files expand to huge sizes, it...

Written By: Robby Cabri



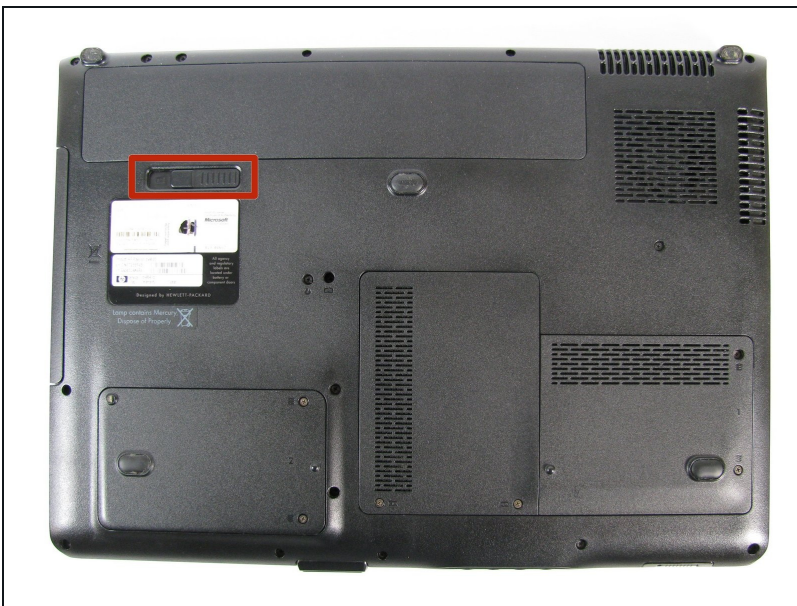
INTRODUCTION

In an age where files expand to huge sizes, it becomes necessary to have a large storage medium. Replacing a hard drive could be a challenging task, but this guide clarifies all potential issues.


TOOLS:

Phillips #1 Screwdriver (1)

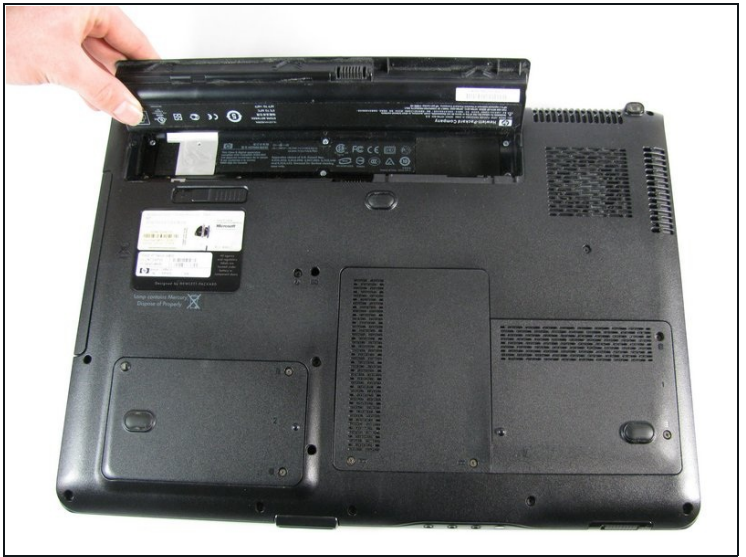
Step 1 — Battery



- Turn the laptop over to expose the bottom side.
- Locate the battery removal switch next to the battery compartment

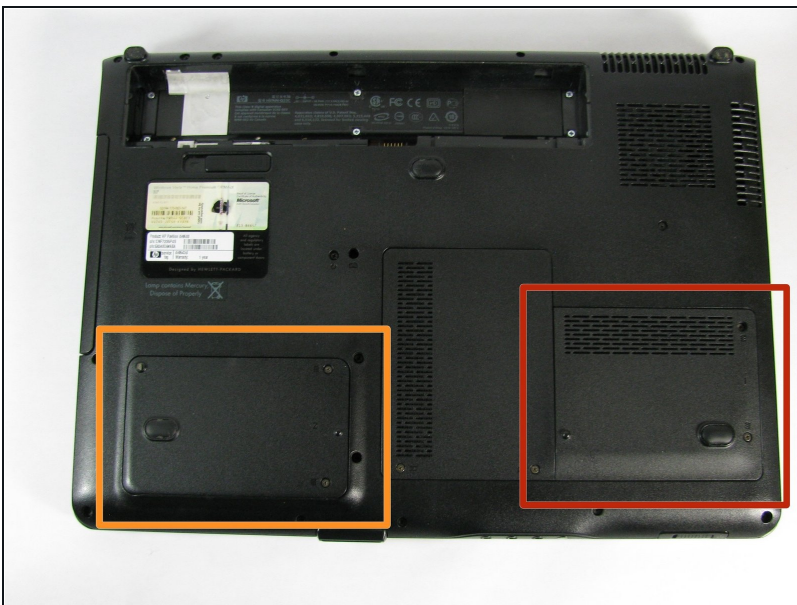
 **Important:** Before doing any repairs on the laptop, make sure it is completely powered down and unplugged.

Step 2 — Battery Removal



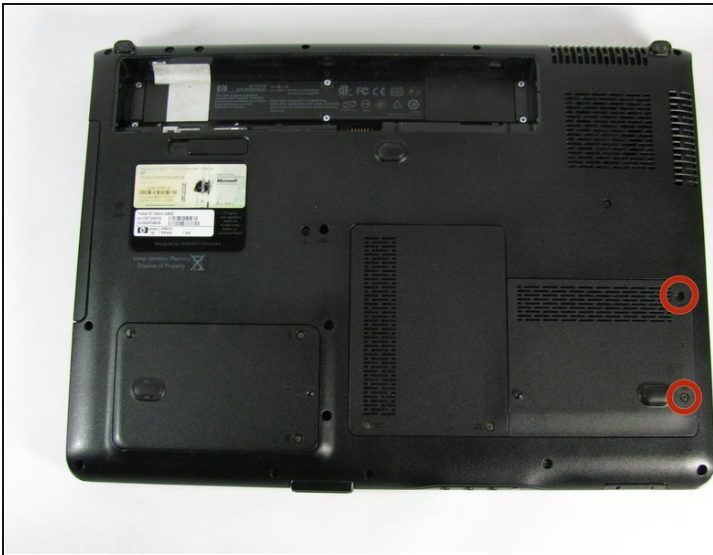
- Slide the switch all the way to the left to release the battery. The battery should pop up.
- Lift the battery out.

Step 3 — Hard Drive



- There are two hard drive bays.
 - Hard drive bay 1 is in the lower right corner.
 - Hard drive bay 2 is in the lower left corner.

Step 4

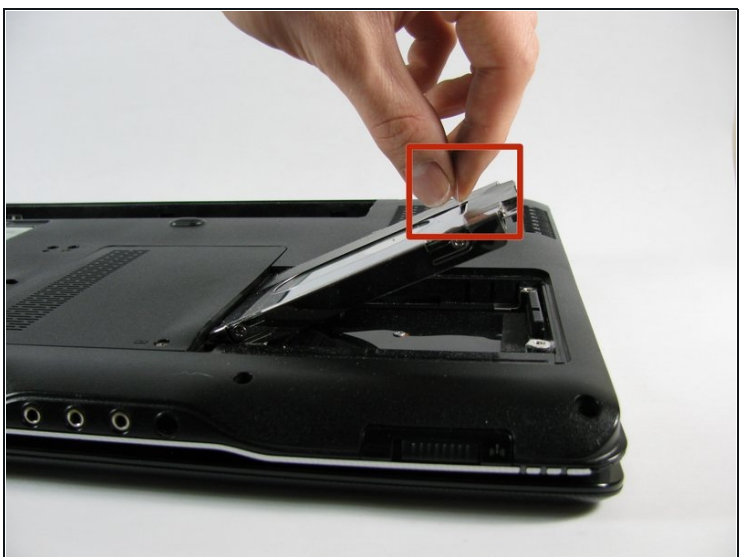


- **To remove hard drive 1 from bay 1**

- Using a Phillips #1 screwdriver, remove the two 5 mm screws that hold the bay 1 cover in place.

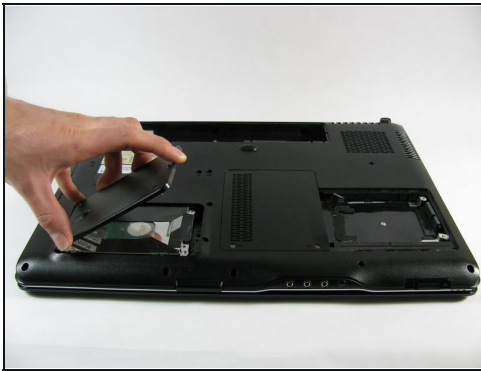
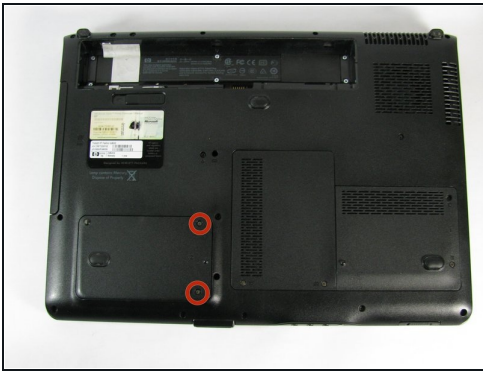
ⓘ The screws should remain in the cover.

Step 5



- After removing the two cover screws, lift and slide the cover out of position to access the hard drive.
- Grab the clear plastic pull tab on top of the hard drive to lift the hard drive from the laptop.

Step 6

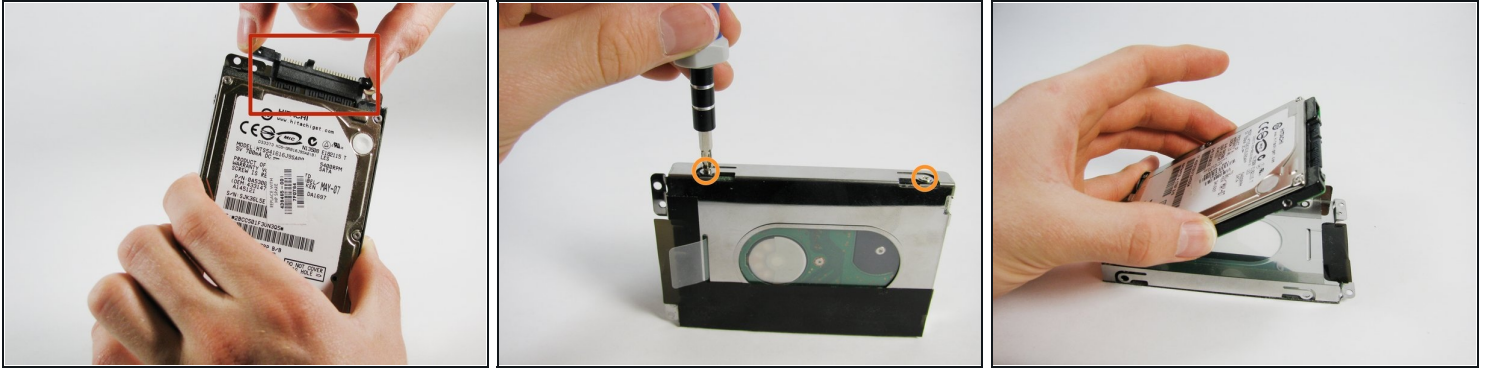


- **To remove hard drive 2 from bay 2.**

- ① Most laptops don't have a second hard drive. If yours does not, then proceed to the next step.

- Using a Phillips #1 screwdriver remove the two 5 mm screws that hold the bay 2 cover in place.
- After removing the two cover screws, lift and slide the cover out of position to access the hard drive.
- Grab the clear plastic pull tab on top of the hard drive, and lift the hard drive from the laptop.

Step 7



- After the hard drive has been removed from the laptop, it must then be removed from its bracket.
 - Start by gently pulling the HP hard drive adapter from the end of the hard drive.
 - Using a Phillips #1 screwdriver, remove the four 3 mm bracketing screws on *both* sides of the hard drive bracket (2 per side) .
 - Lift the hard drive from its metal bracket.
- ⚠ Be careful not to touch the green underside as this may damage the hard drive.

To reassemble your device, follow these instructions in reverse order.