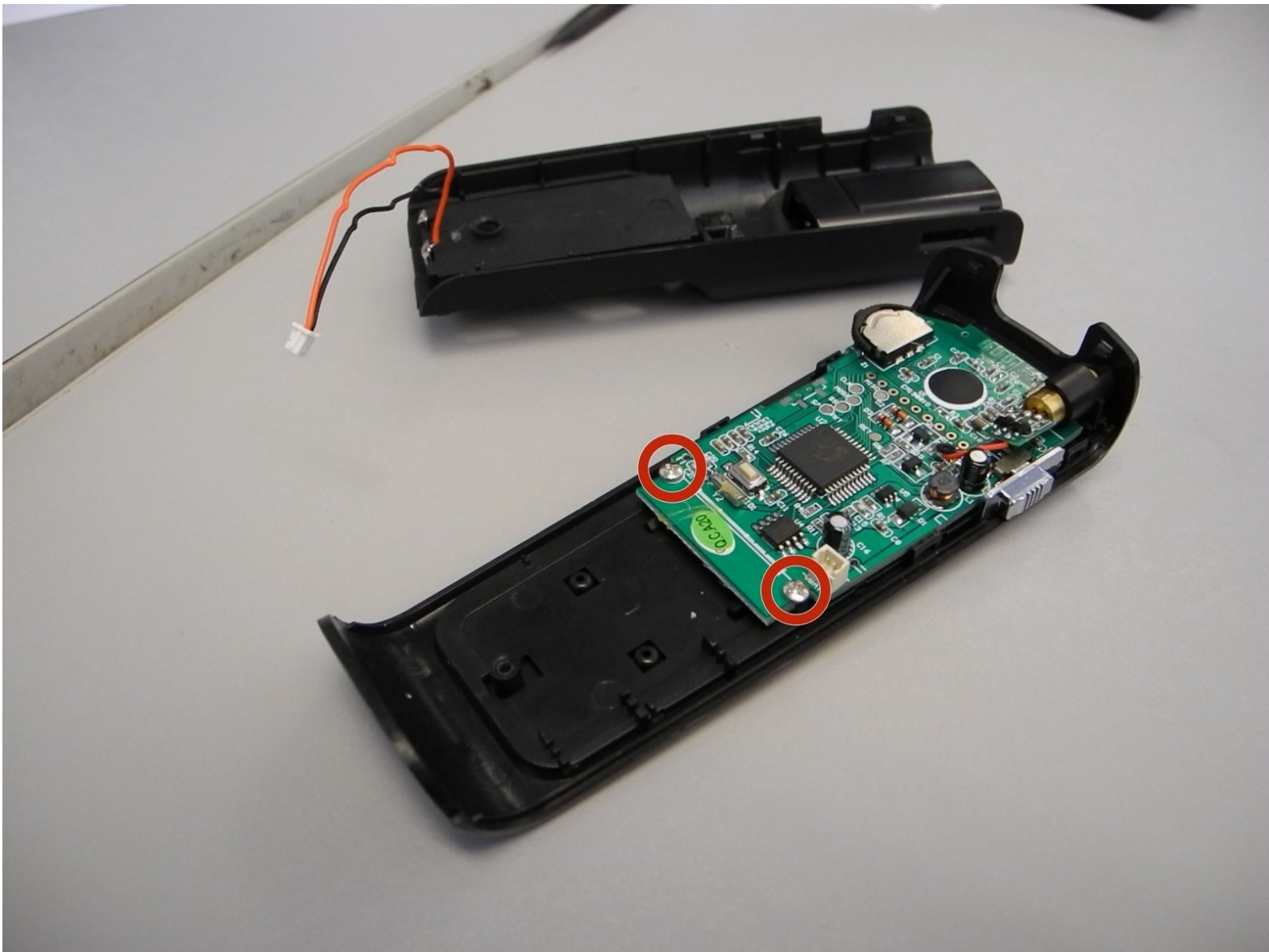




# Interlink VP4550 Circuit Board Replacement

This guide will direct readers on how to replace the circuit board of an Interlink VP4550.

Written By: custer78



---

## INTRODUCTION

To replace the Circuit Board on an Interlink VP4550 wireless presenter remote requires only 6 easy steps. The Circuit Board controls all of the functions in the remote therefore can be the reason for an unresponsive remote. This guide will show you how to replace the circuit board in the safest and easiest way possible. Below is a step-by-step process on how to disassemble the remote, install the circuit board, and reassemble it all.



### TOOLS:

- [Phillips #0 Screwdriver](#) (1)
  - [Tweezers](#) (1)
  - [iFixit Opening Tool](#) (1)
-

## Step 1 — Case



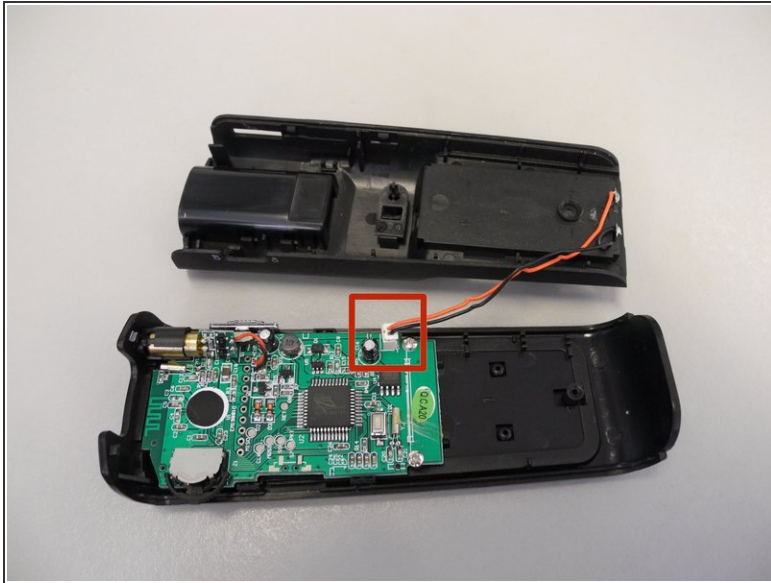
- Turn the phone over to where the battery compartment resides.
- Remove the battery compartment door by pushing down on the door with your thumbs and sliding the door off of the bottom of the device.
- Remove battery.

## Step 2



- Use a Phillips #0 screwdriver to remove the screw in the middle of the battery compartment.
- Pry open the case body with the plastic opening tool. Start at the bottom of the device and work toward the top. You will hear a "click" sound as the sides open.

## Step 3

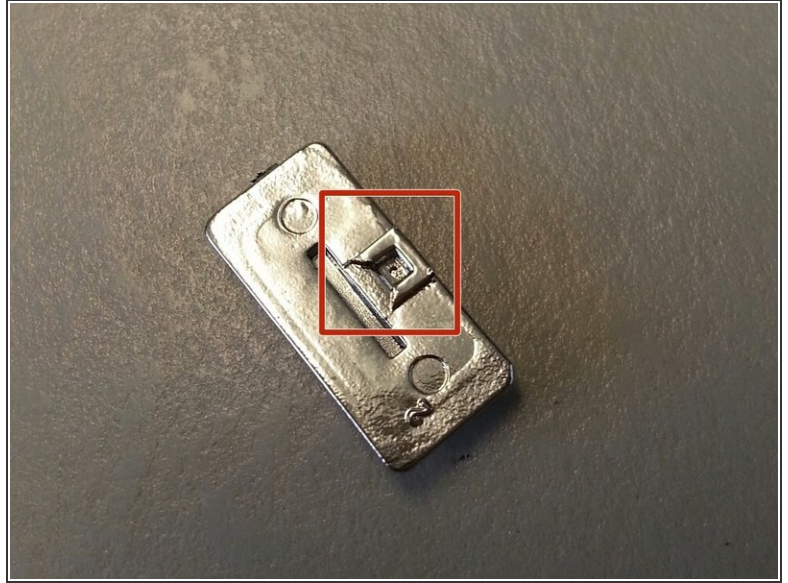
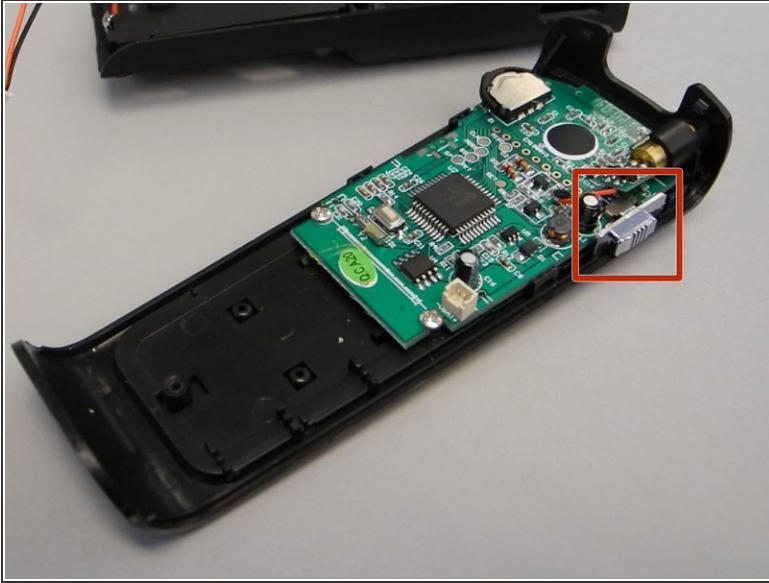


 There is a wire connector linking the front and the back of the device.

- Carefully pull the wire connectors out of the white connector gauge to completely separate the front and back pieces.



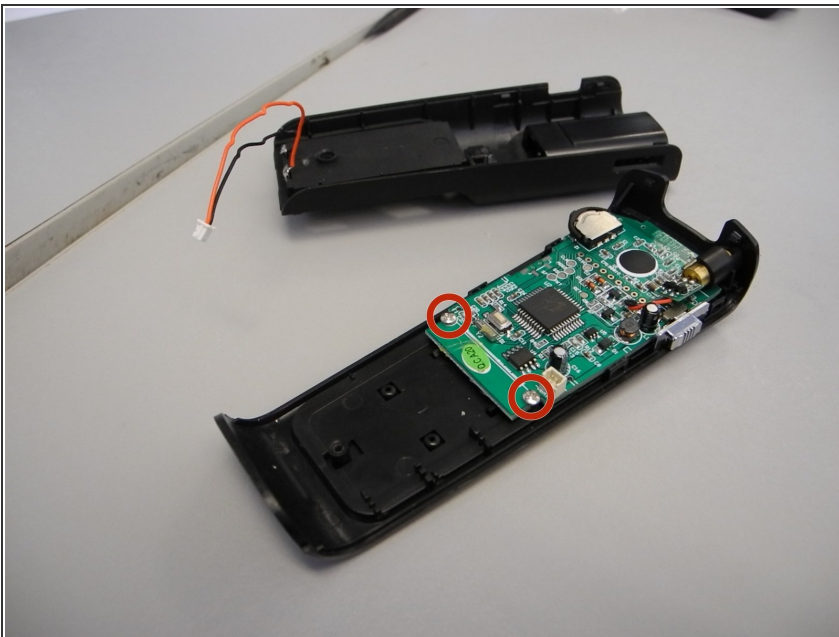
## Step 4



**i** The power button may fall off when you separate the front and back of the device. This can simply be placed back when reassembling.

- Find the lever on the right side of the back half of the device.
- Insert the tip of the lever into the square indent on the underside of the button.

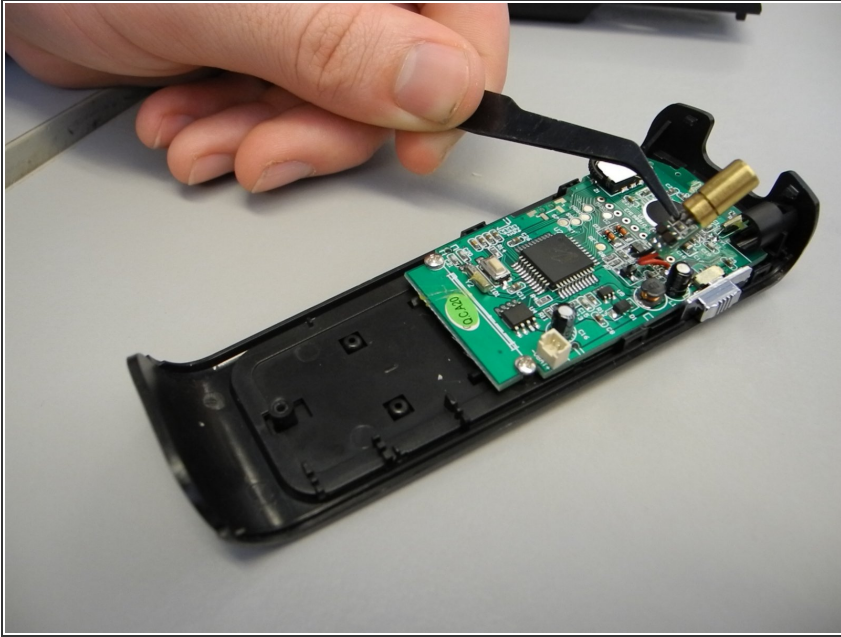
## Step 5 — Circuit Board



**!** Avoid picking up the front of the device as you work so that loose parts will not shift.

- Use a Phillips #0 head screwdriver to remove two screws; one on either side of the circuit board.

## Step 6



- Slide the circuit board down from the tab located underneath the top of the back half
- ⓘ The laser is attached to the circuit board and will slide out of its own housing as you slide out the circuit board.
- Use tweezers to gently remove it if it doesn't come out.

To reassemble your device, follow these instructions in reverse order.