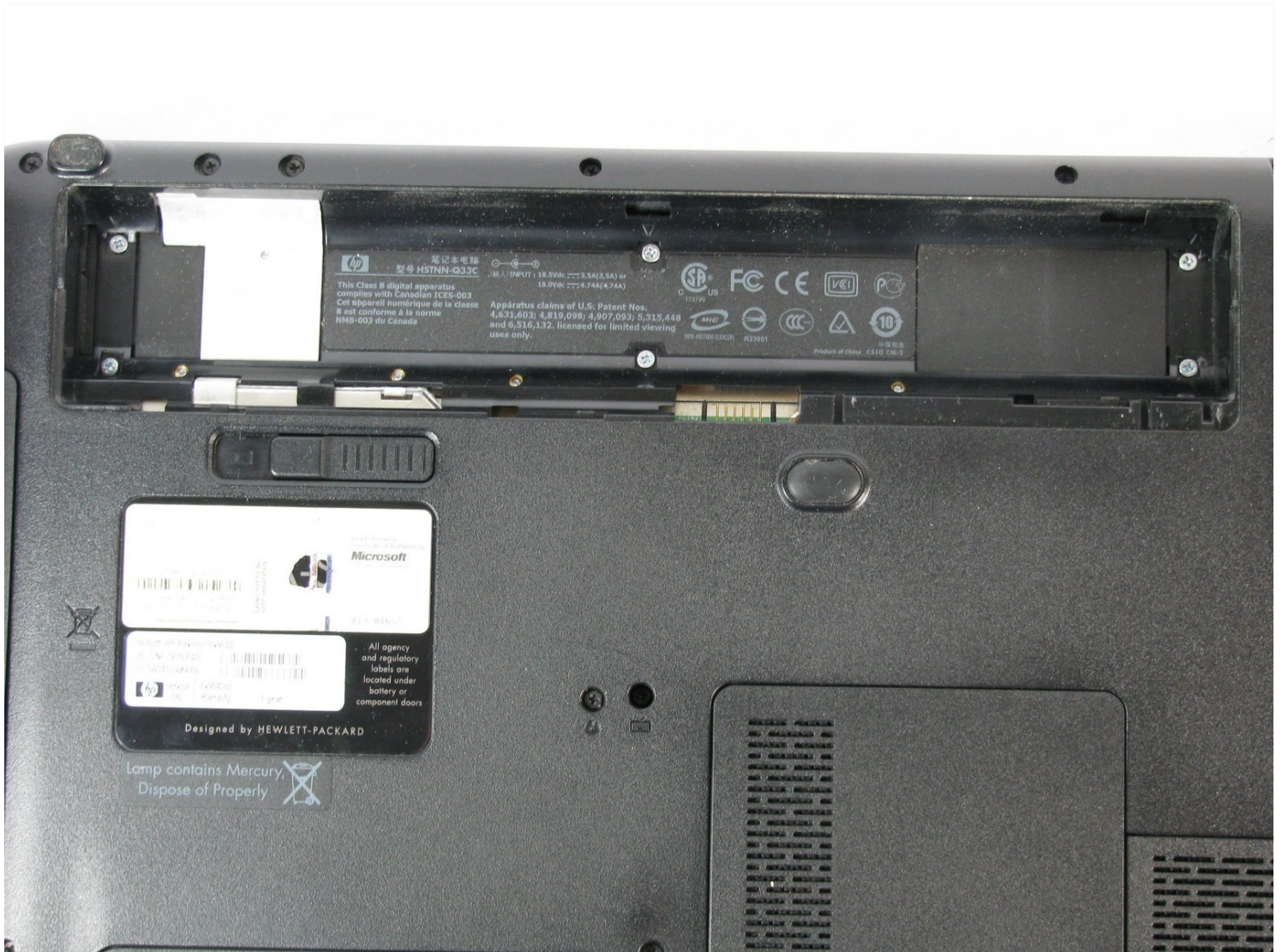




HP Pavilion dv9000 Keyboard Replacement

When keyboards become worn or unresponsive,...

Written By: Erik Hoffnagle



INTRODUCTION

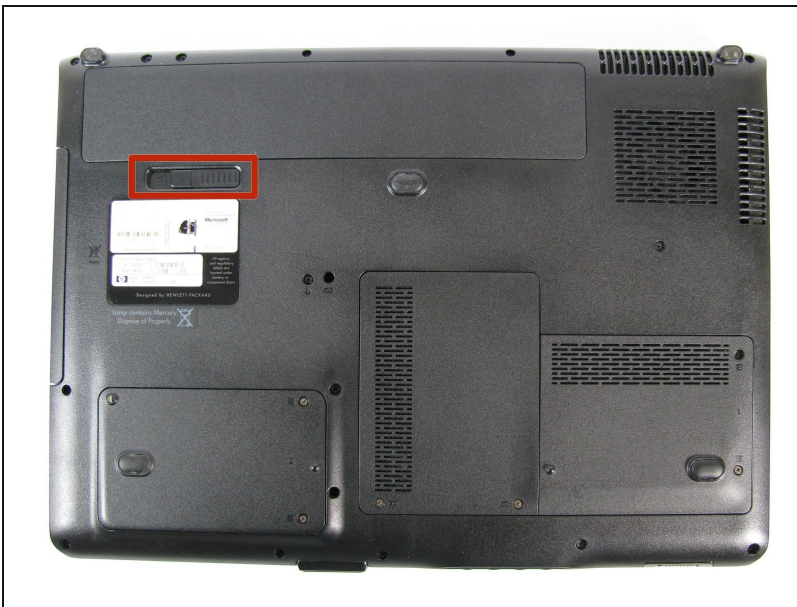
When keyboards become worn or unresponsive, it's typically time to replace them. Replacing a keyboard can be especially difficult, as it's normally secured by many screws. This guide outlines all the steps needed to access the keyboard.

TOOLS:


Spudger (1)

Phillips #1 Screwdriver (1)

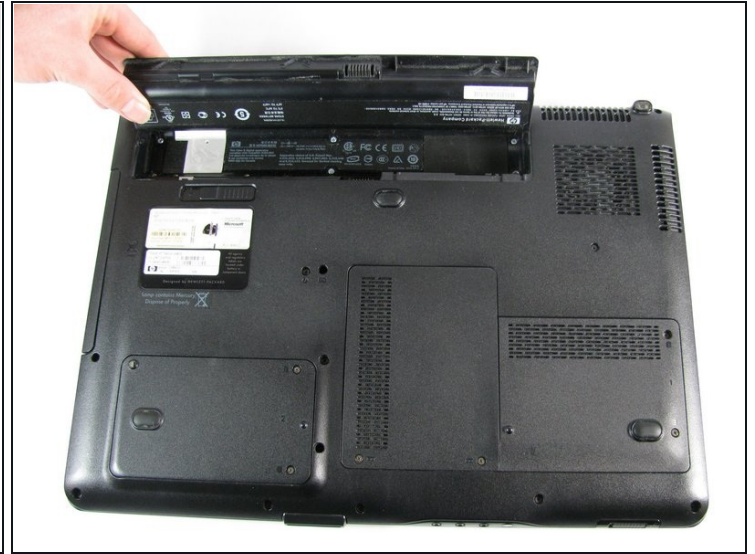
Step 1 — Battery



- Turn the laptop over to expose the bottom side.
- Locate the battery removal switch next to the battery compartment

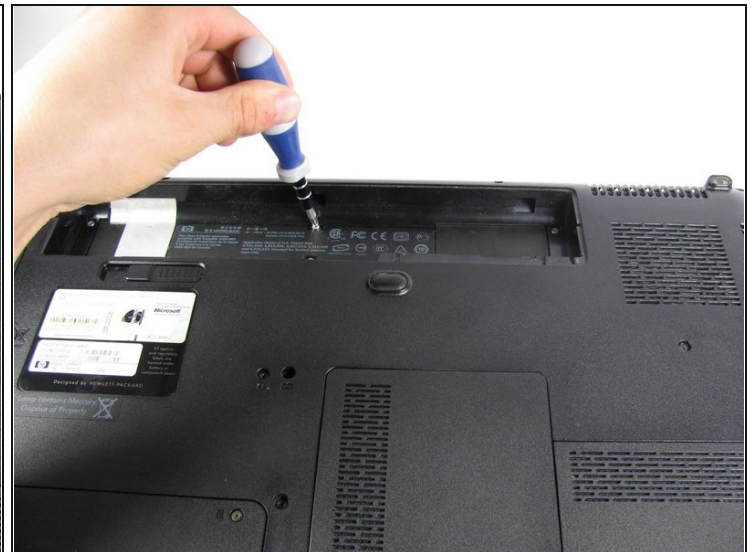
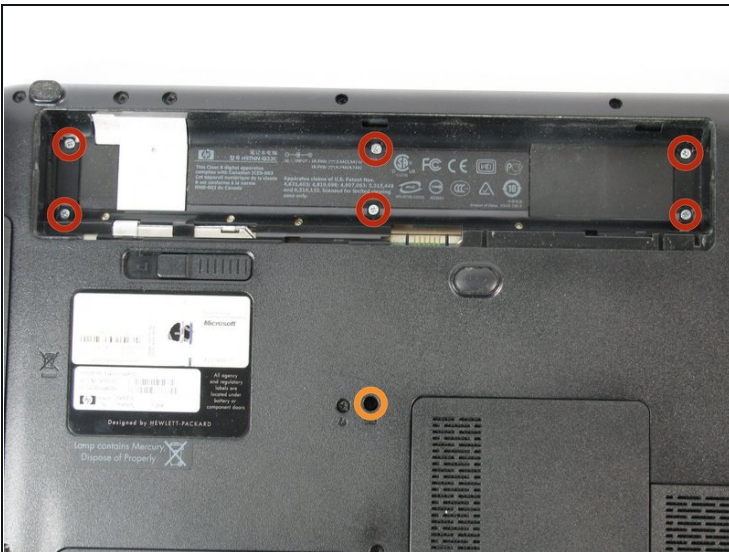
 **Important:** Before doing any repairs on the laptop, make sure it is completely powered down and unplugged.

Step 2 — Battery Removal



- Slide the switch all the way to the left to release the battery. The battery should pop up.
- Lift the battery out.

Step 3 — Keyboard



- Remove the six 5 mm screws in the battery compartment using Phillips #1 screwdriver.
- Remove the 7mm keyboard screw located towards the center of the laptop with a Phillips #1 screwdriver.

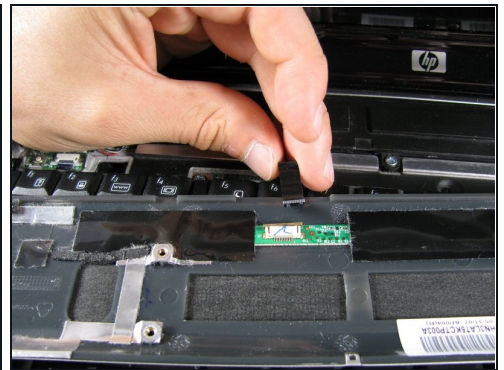
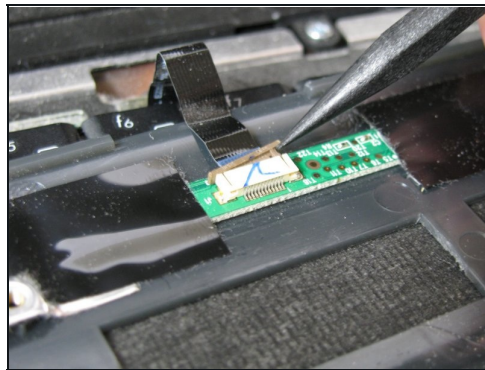
Step 4



- Flip the laptop over and open the lid.
- Lift out the plastic panel containing the power button and flip it over.

⚠ Be careful, the panel is still attached by a small ribbon cable.

Step 5



- Locate the ribbon cable attached to the underside of the plastic panel.
- Using a spudger, unplug the ribbon cable by pushing the brown tab away from circuit board and sliding the ribbon out with your hand.
- Set the plastic panel aside.

Step 6



- Using a Phillips #1 screwdriver, remove the three 5mm screws holding the keyboard in place.
- Carefully lift the keyboard up (no more than a few cm) and slide it forward, towards the laptops monitor to reveal another larger ribbon cable.
⚠ Be extremely careful as the keyboard is still attached to the computer by the larger ribbon cable.

Step 7



- Use a spudger to push the black tab forward and slide it away from the white connector.
- Gently pull the ribbon cable from the connector housing.
- Remove the keyboard.

To reassemble your device, follow these instructions in reverse order.