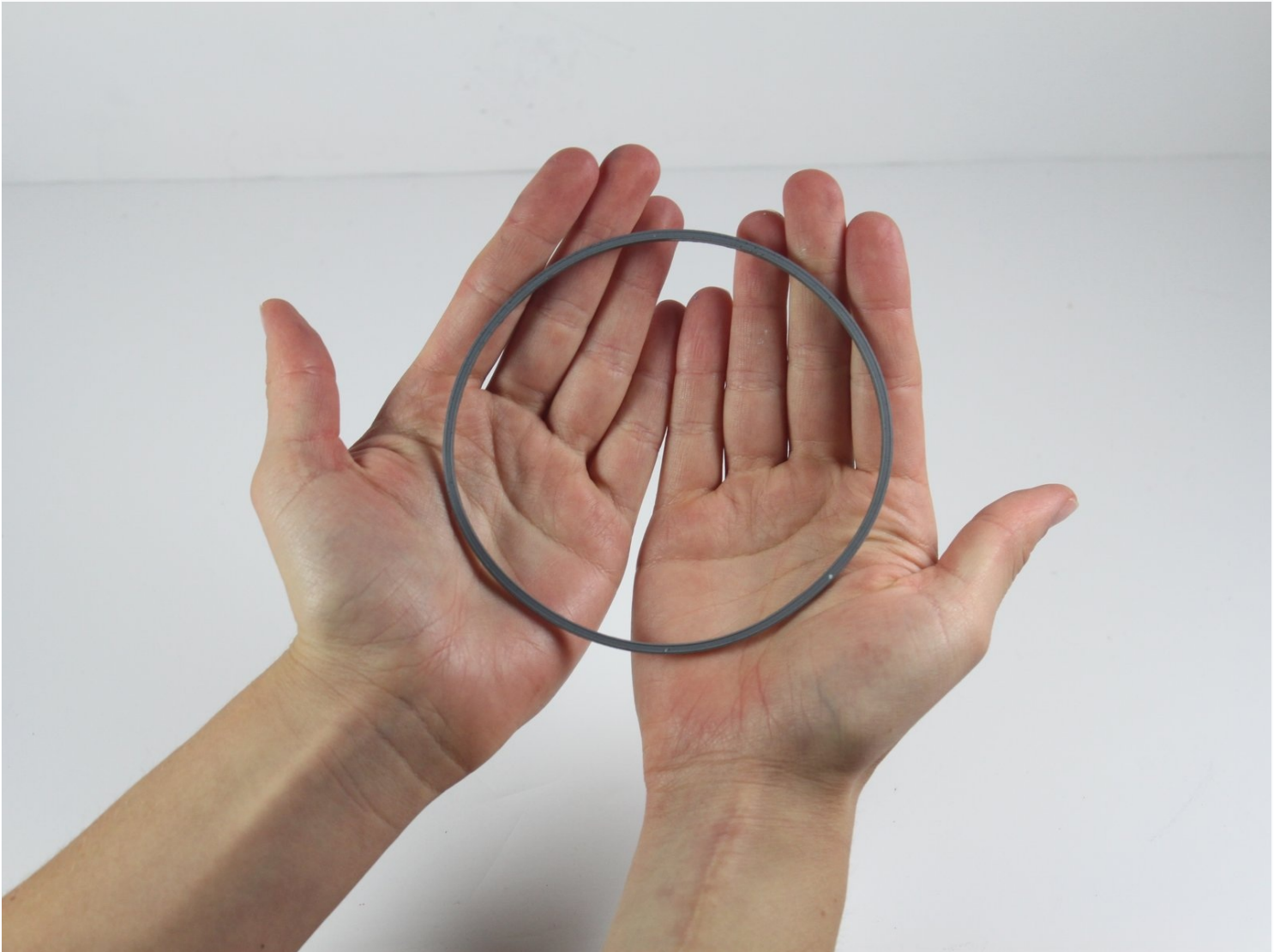




Mr. Coffee DW13 O Ring Replacement

To complete this repair you will need pilers, a...

Written By: Madeline Landis



INTRODUCTION

To complete this repair you will need pliers, a Philips head screwdriver, and a flathead screw driver. During this repair you will remove the base of the coffee machine, loosen the support bar, before finally removing the heating plate and prying out the O-ring.

TOOLS:

Phillips #2 Screwdriver (1)

Large Needle Nose Pliers (1)

2.5 mm Flathead Screwdriver (1)

Step 1 — Base



 Before performing this repair, be sure that your machine is unplugged and dry and that your work space is clean.

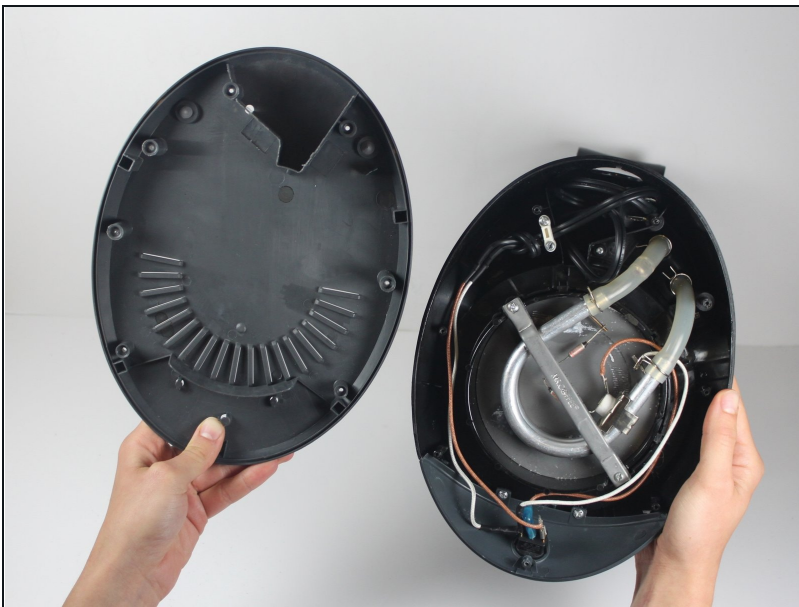
- Flip the Mr. Coffee DW13 over so that the lid is facing away from you and the base is facing toward you.

Step 2



- Remove the eight 11 mm screws that secure the base of the machine with a Phillips Head #2 screwdriver.

Step 3



- Gently lift the base cover to expose the inside of the coffee machine.

Step 4 — O Ring



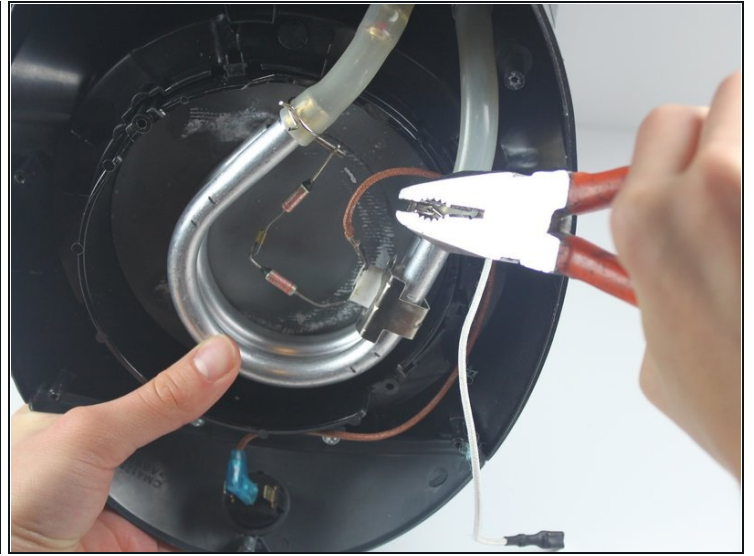
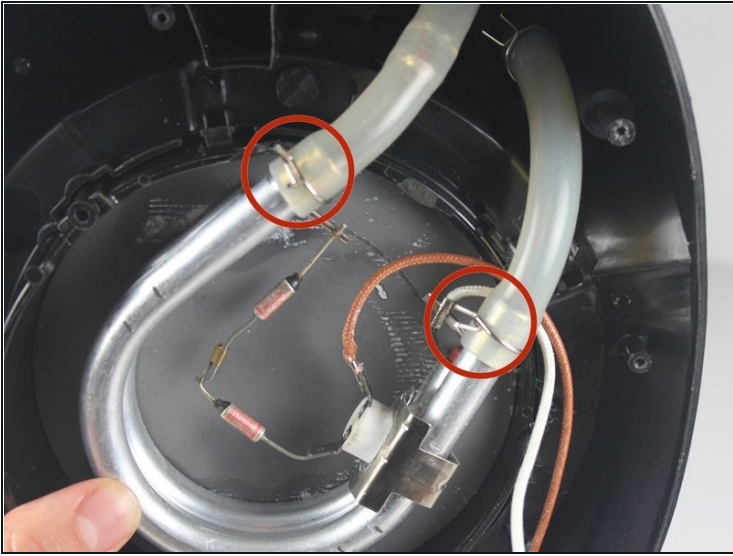
- Remove the two 13mm screws securing the silver support bracket using a #2 Phillips head screwdriver.

Step 5



- Gently lift the silver support bracket freeing the heating plate from the heating coil.

Step 6



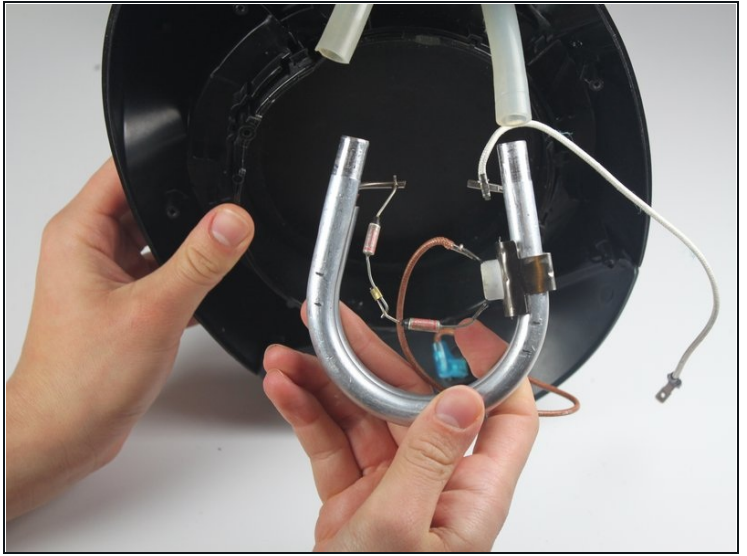
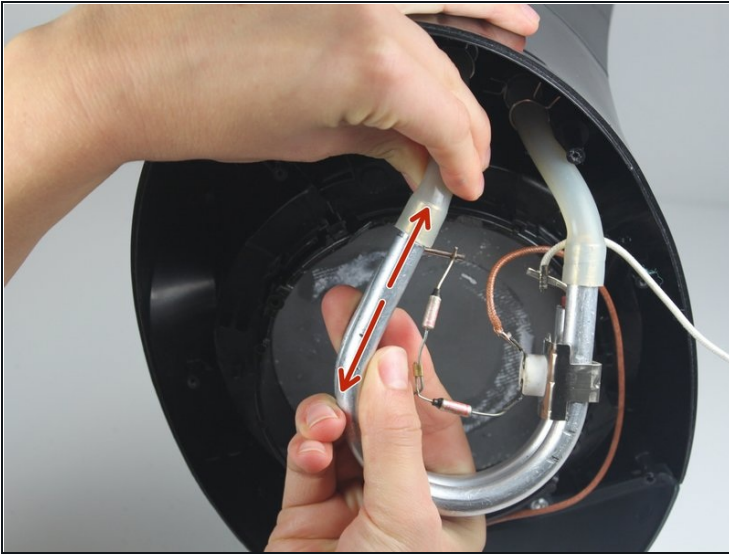
- Use needle-nose pliers to pinch and loosen the crimps

Step 7



- Once the crimps are loosened, slide them down the tubing.

Step 8



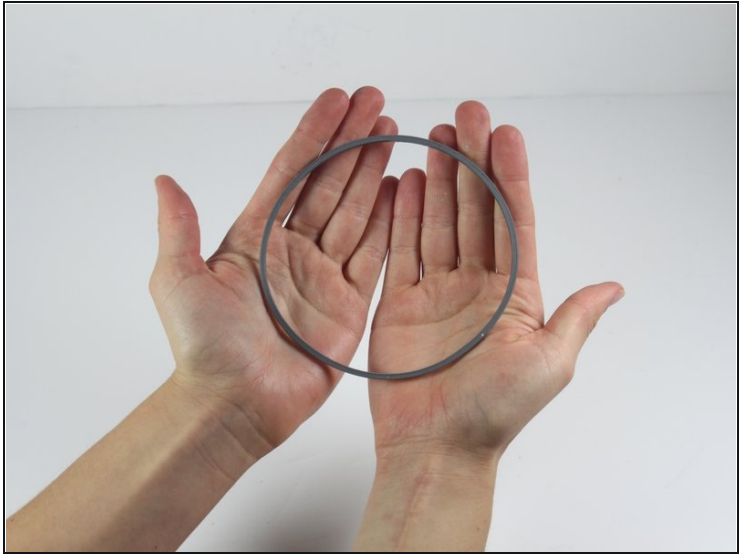
- Separate the tubing from the heating coil by grasping the tubing in one hand and the heating coil in the other and gently pulling apart.

Step 9



- Place one of your hands on the front side of the heating plate.
- Use this hand to gently push the heating plate towards yourself and out of the machine.

Step 10



- Use a [2.5 mm Flathead](#) Screwdriver to pry out the O-ring.

To reassemble your device, follow these instructions in reverse order.