



Xbox 360 E CD Drive Replacement

Replace the CD drive of the Xbox 360 E.

Written By: George



INTRODUCTION

Following this guide involves opening the Xbox 360 E and is somewhat more involved than replacing other parts of the Xbox.



TOOLS:

- [Spudger](#) (1)
-

Step 1 — Top Panel



- Push the [Spudger](#) into the crevice between the grated top panel of the Xbox and the bottom body with the rubber feet.
- Pull back on the spudger like a lever, keeping it pressed firmly into the crevice.

Step 2



- Slide the spudger along the separation you have created between the grated panel and the bottom body of the Xbox.
- Periodically pull back on the spudger like a lever, keeping it pressed firmly into the crevice.

Step 3



- Continue sliding the spudger along the perimeter of the left grated face of the Xbox.
- Pull the top panel off.

Step 4 — Wi-Fi Card



- Remove the 11 mm screw left of the green wifi-card using the T9 Torx screw bit.

Step 5



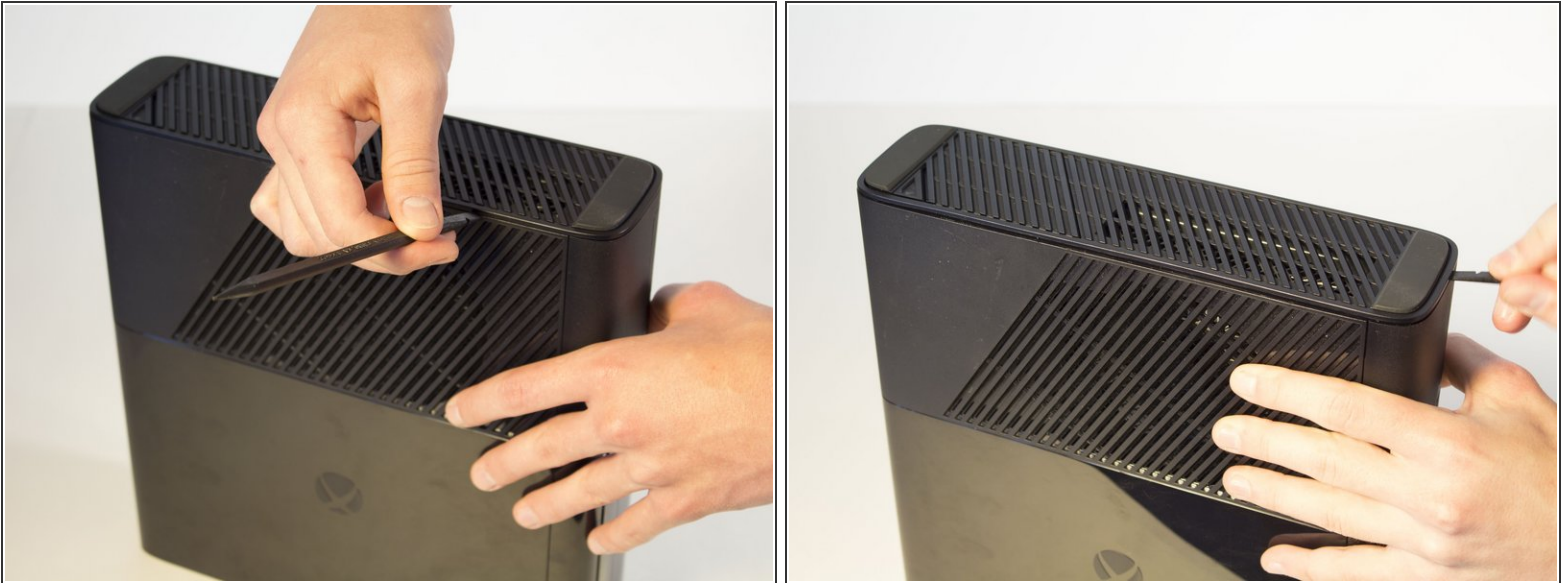
- Firmly grip the green Wi-Fi card and pull it out of the Xbox.

Step 6 — Bottom Panel



- Push the spudger into the crevice between the right grated face and the top body of the Xbox. It's easier to begin away from the vent.
- Pull up on the spudger like a lever, keeping it pressed firmly into the crevice.

Step 7



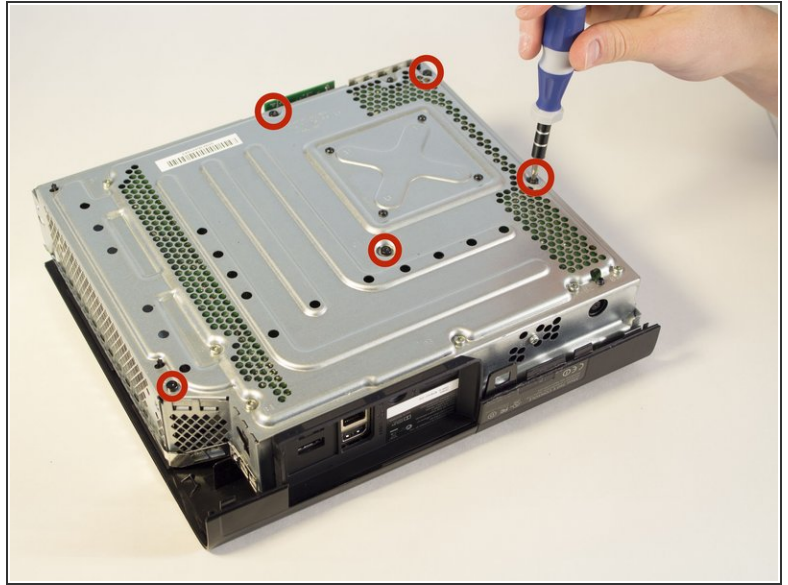
- Slide the spudger along the crevice to separate the grated face and the top body.

Step 8



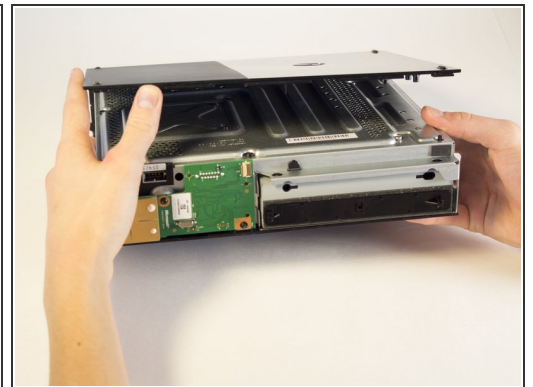
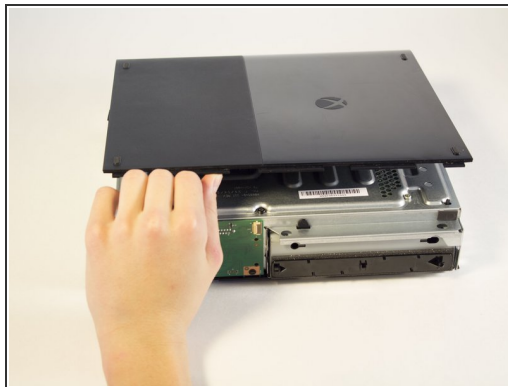
- Wiggle the spudger in the crevice as you slide the spudger to loosen the bottom plate.
- Slide the spudger along the crevice, going completely about the perimeter of the bottom panel.
- Pull the bottom panel off.

Step 9 — Top Body



- Remove the five long black 55 mm screws labeled C2-5 and C7 with a T9 Torx screwdriver.
- Carefully flip the device and pull off the body by lifting from the metal section that is attached to the plastic exterior.

Step 10 — Bottom Body



- Orient the Xbox so the bottom body is facing upwards. Make sure you see the rubber feet to know you have the correct side of the device.
- Lift the bottom body slightly away from the core at a 45 degree angle.

Step 11



- Rotate the Xbox so you are now looking at the back of the device.

⚠ This step of disassembly requires the removal of the warranty sticker. This will void your warranty. Check the main page for a link to warranty information from Microsoft.

- Remove the sticker from the back of the Xbox.

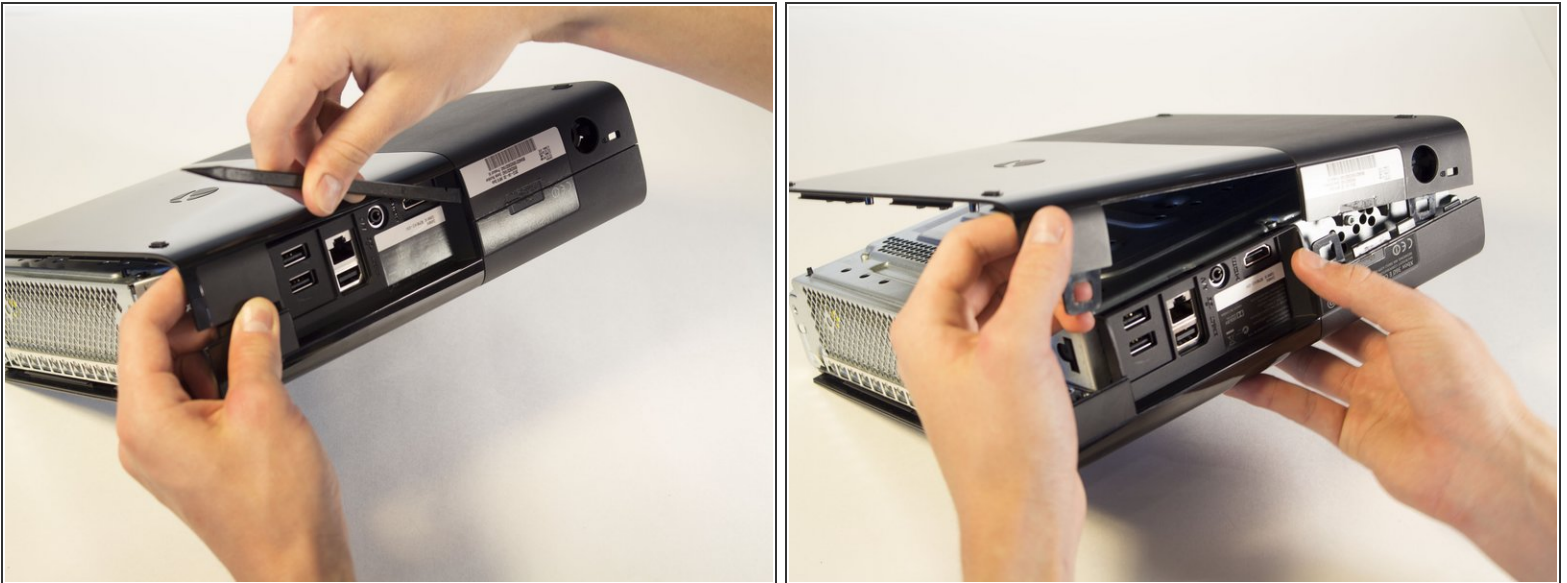
i *The sticker is not needed for reassembly.*

Step 12



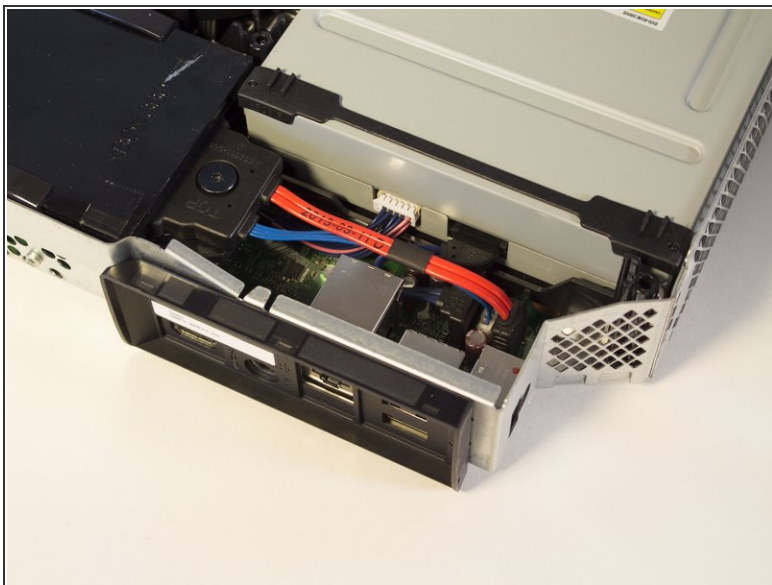
- Turn the Xbox to the left to locate the clip holding the body together.
- With a spudger, press up on the clip like a latch. Move to the far end to undo the other clip the same way.

Step 13



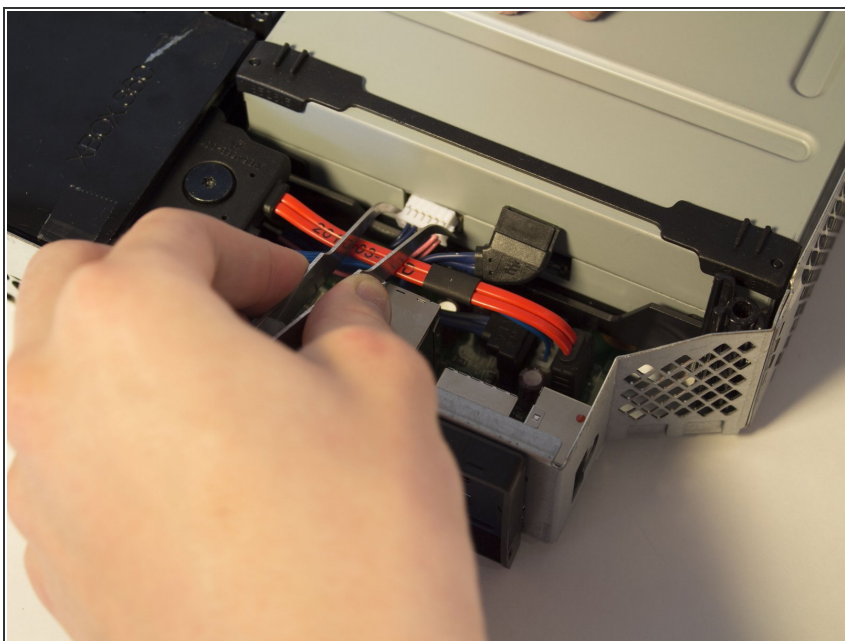
- Push the spudger into the crevice. Slide the spudger along the vertical crevice to detach the last clip. The bottom body should slide off after this.

Step 14 — CD Drive



- Use your fingers to unplug the blue ribbon cable from the CD drive.

Step 15



- Use tweezers to unplug the blue and pink wires.

Step 16



- Lift the front end of the CD drive and take it out.

To reassemble your device, follow these instructions in reverse order.