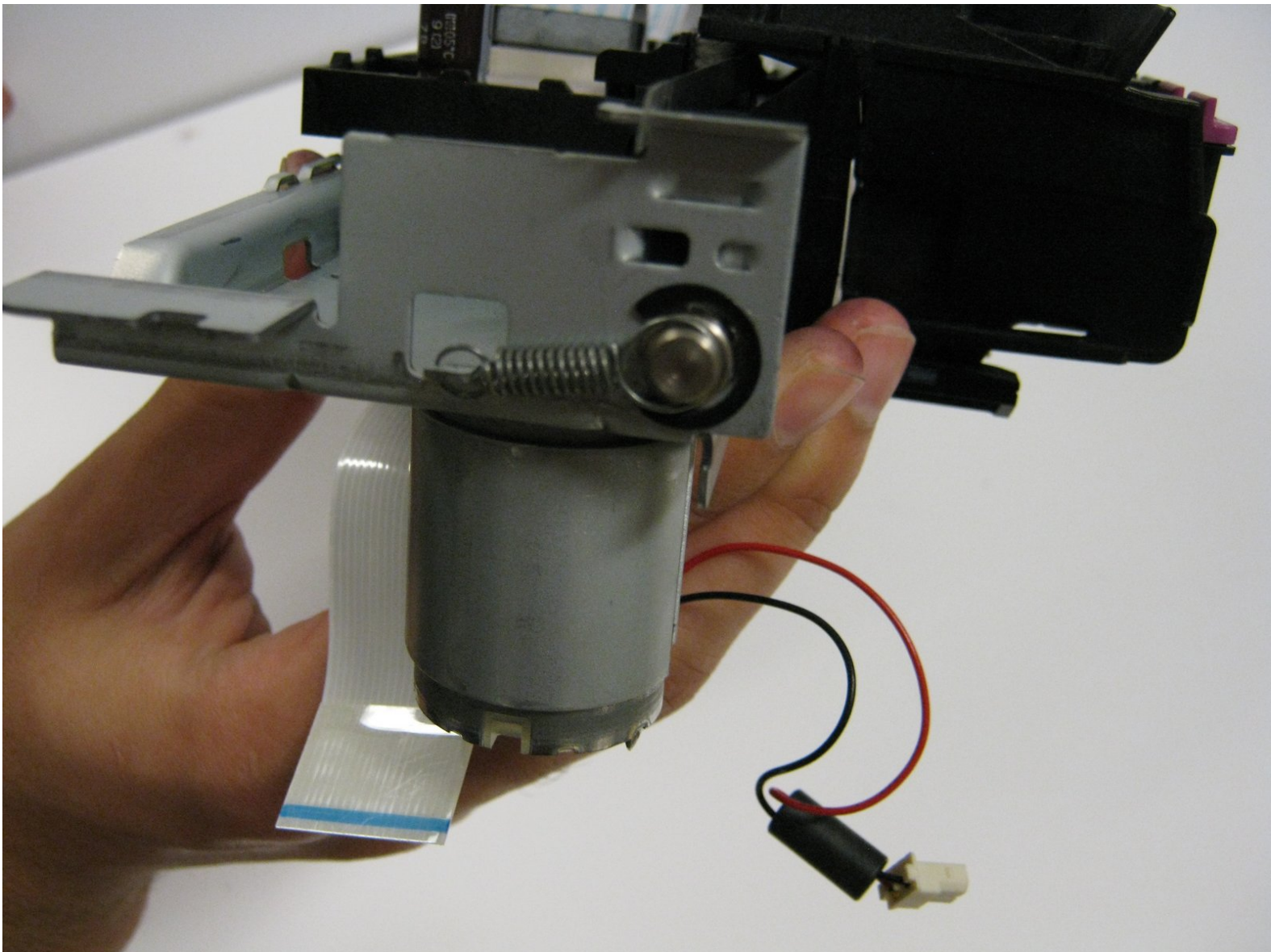




# HP Deskjet D1660 Springs Replacement

Replace the springs on the side of the metal frame that holds the printer carriage.

Written By: Justin Taiki Fukada



---

## INTRODUCTION

This guide will replace the springs located on the sides of the metal frame that holds the ink carriage. These springs provide stability to the metal rod that supports the ink cartridge carriage.

---



### TOOLS:

- [T10 Torx Screwdriver](#) (1)
  - [Tweezers](#) (1)
-

## Step 1 — Top Cover



- Remove the back two 14.0 mm Torx #10 screws.

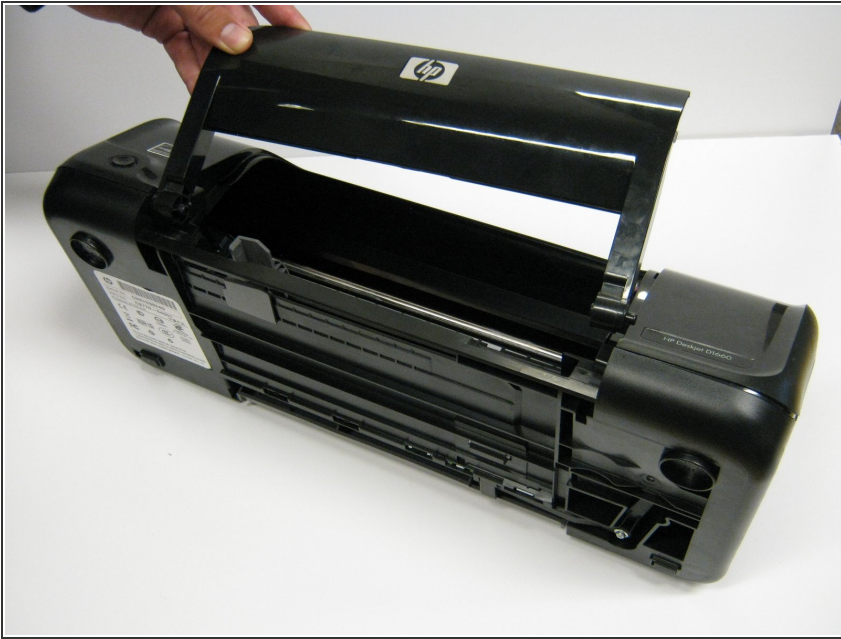
## Step 2



- Lay the printer on its back.
- Grab the paper tray by its right side and pull it to the left and up.

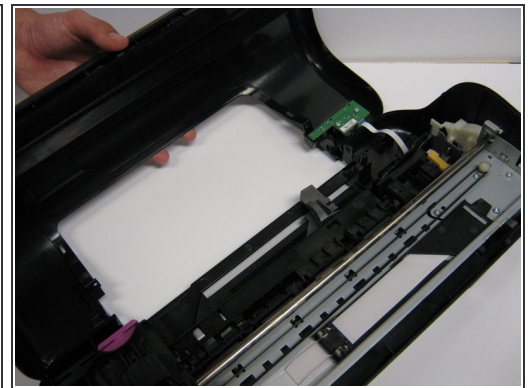
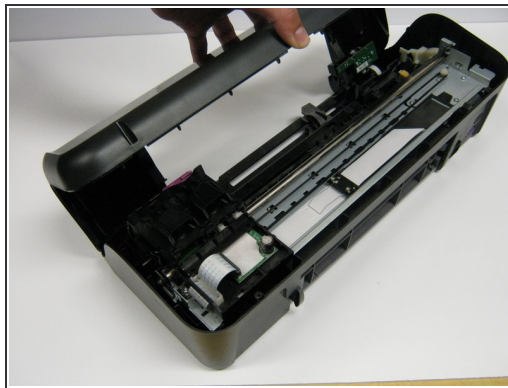
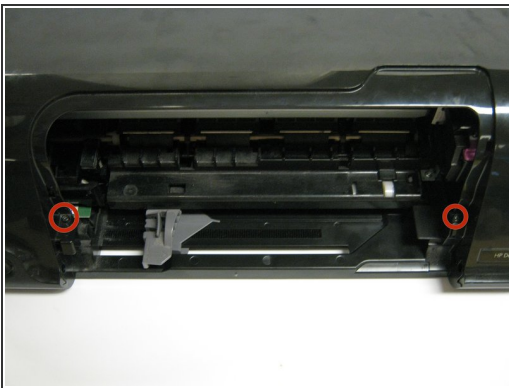


## Step 3



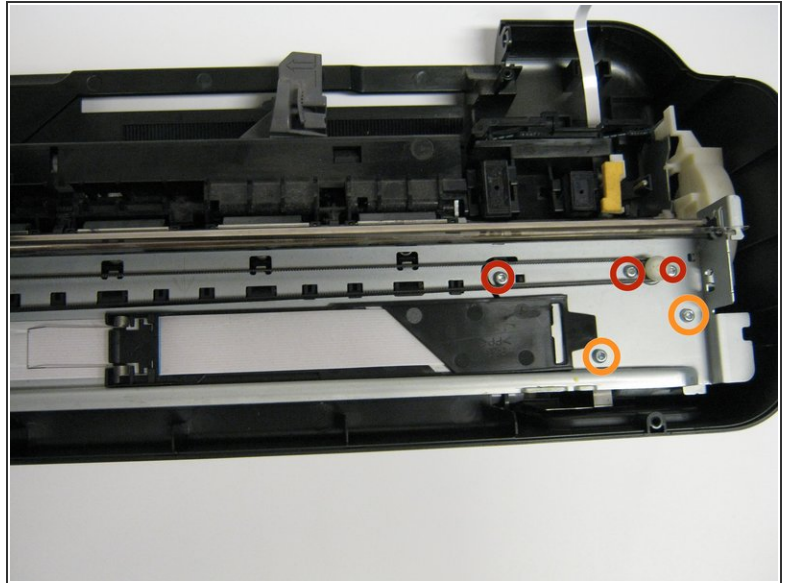
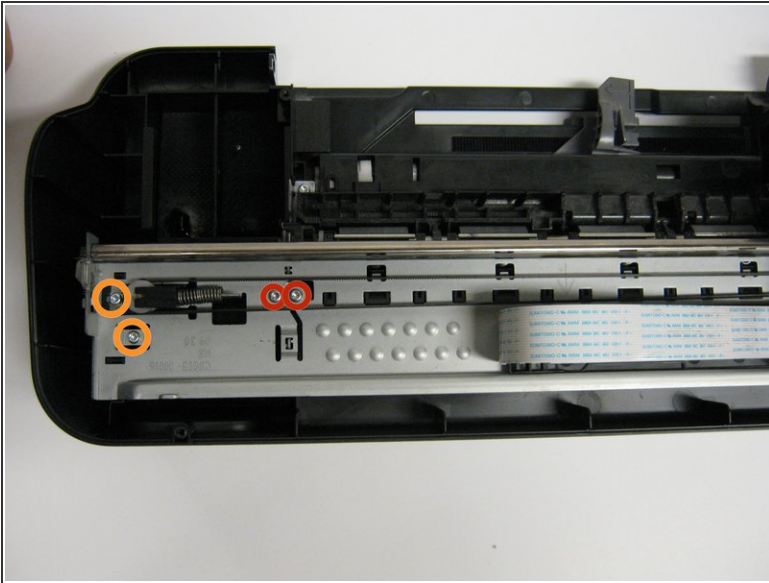
- Open the frontal access panel by lifting it from the top.
- Similar to the paper tray, grab it from the right side and pull it to the left and up.

## Step 4



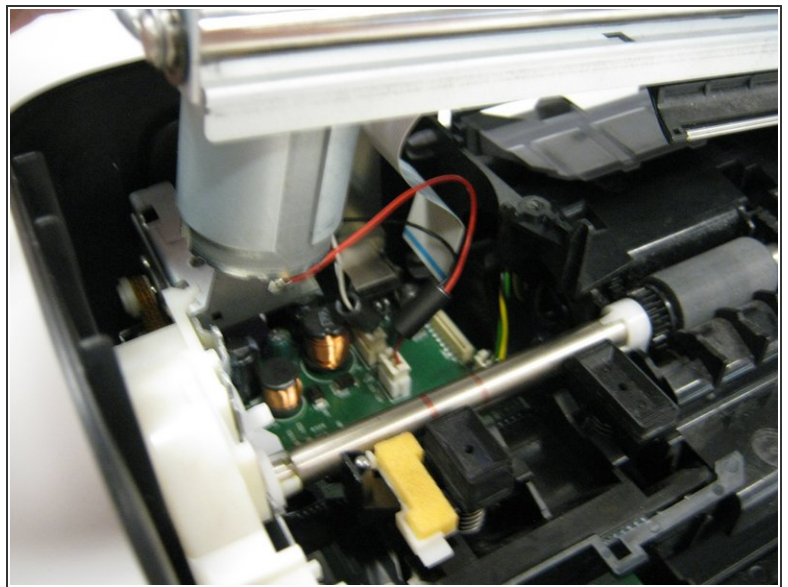
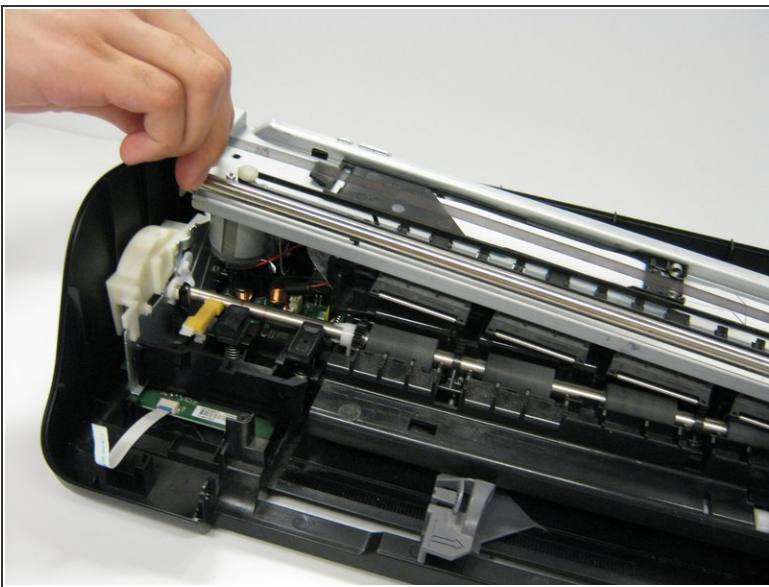
- Take out the two frontal 14.0 mm Torx #10 screws.
  - Carefully lift the frontal cover.
- ⚠ Don't lift it up aggressively. A strip will be attached to it.

## Step 5 — Ink Cartridge Rail



- Remove the five 13.0 mm Torx #10 screws found on top of the frame.
- Remove the four 9.0 mm Torx #10 smaller screws.

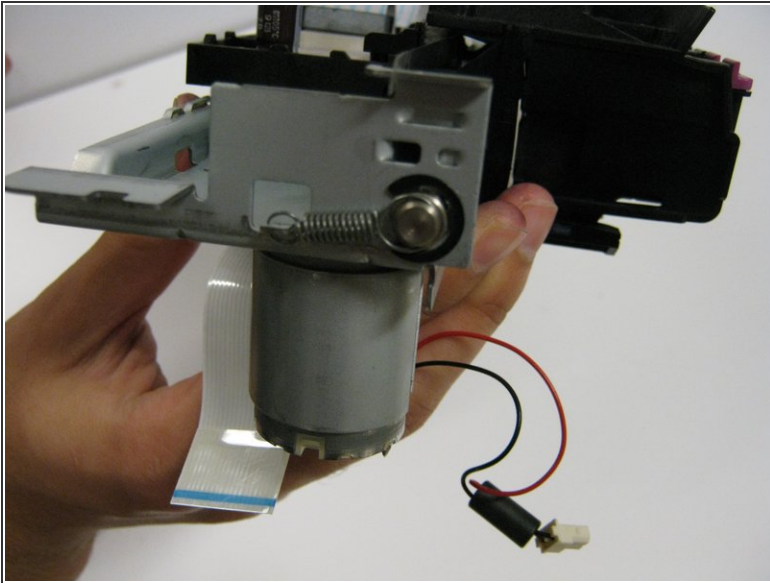
## Step 6



- ⚠ Lift the rail carefully as a strip and motor will be connected to the bottom part of the printer.
- Now detach the white strip and wires by gently lifting them up.



## Step 7 — Springs



- Locate the springs. They will be on the side of the metal frame.
- Using the tweezers, grab the loop of the spring that is connected to the bar.
- Remove the spring by lifting the loop.

To reassemble your device, follow these instructions in reverse order.