



Samsung 500C ChromeBook Battery Replacement

Written By: Garrett Kissinger



INTRODUCTION

If your Samsung 500C Chromebook is draining rapidly, or not charging at all, it may be time to replace the battery.

As laptop batteries are charged and drained, the capacity of the battery will reduce. Over time, the battery will have noticeably lower capacity and/or will no longer be able to hold any charge at all. When this occurs, the battery should be replaced.

If the battery is noticeably swollen, you should take the [proper precautions](#).

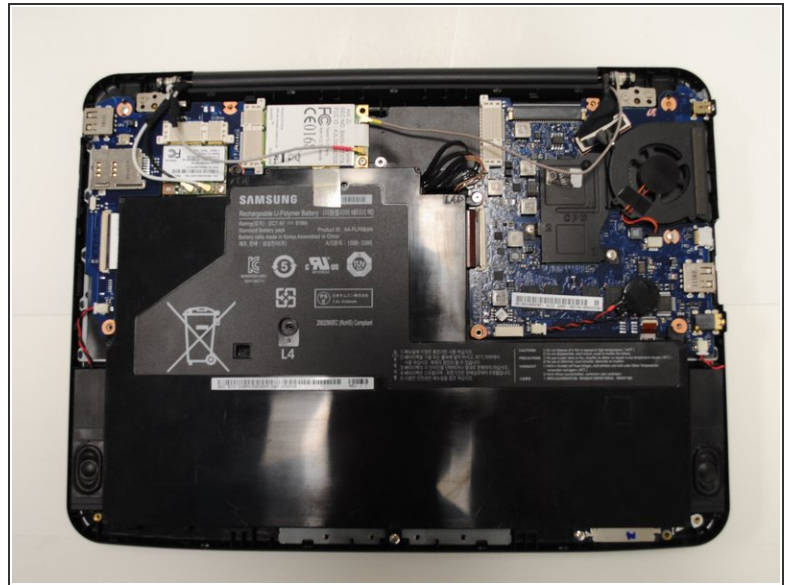
Power down your device before following the steps below.



TOOLS:

- [Phillips #1 Screwdriver](#) (1)
 - [Spudger](#) (1)
-

Step 1 — Battery



- Use the spudger to remove the four rubber feet on the bottom panel.
- Remove the seven Philips #1 screws.

Step 2



- Remove the seven Phillips #1 screws holding the battery in place.
- Detach the battery connector by pulling the connector towards the battery.
 - ⚠ Pull from the plastic connector, do not pull from the wires.
- Remove the battery.
- ⓘ When reinserting the battery, it is easier to insert from the long end first before lowering the rest of the battery into place.

To reassemble your device, follow these instructions in reverse order.