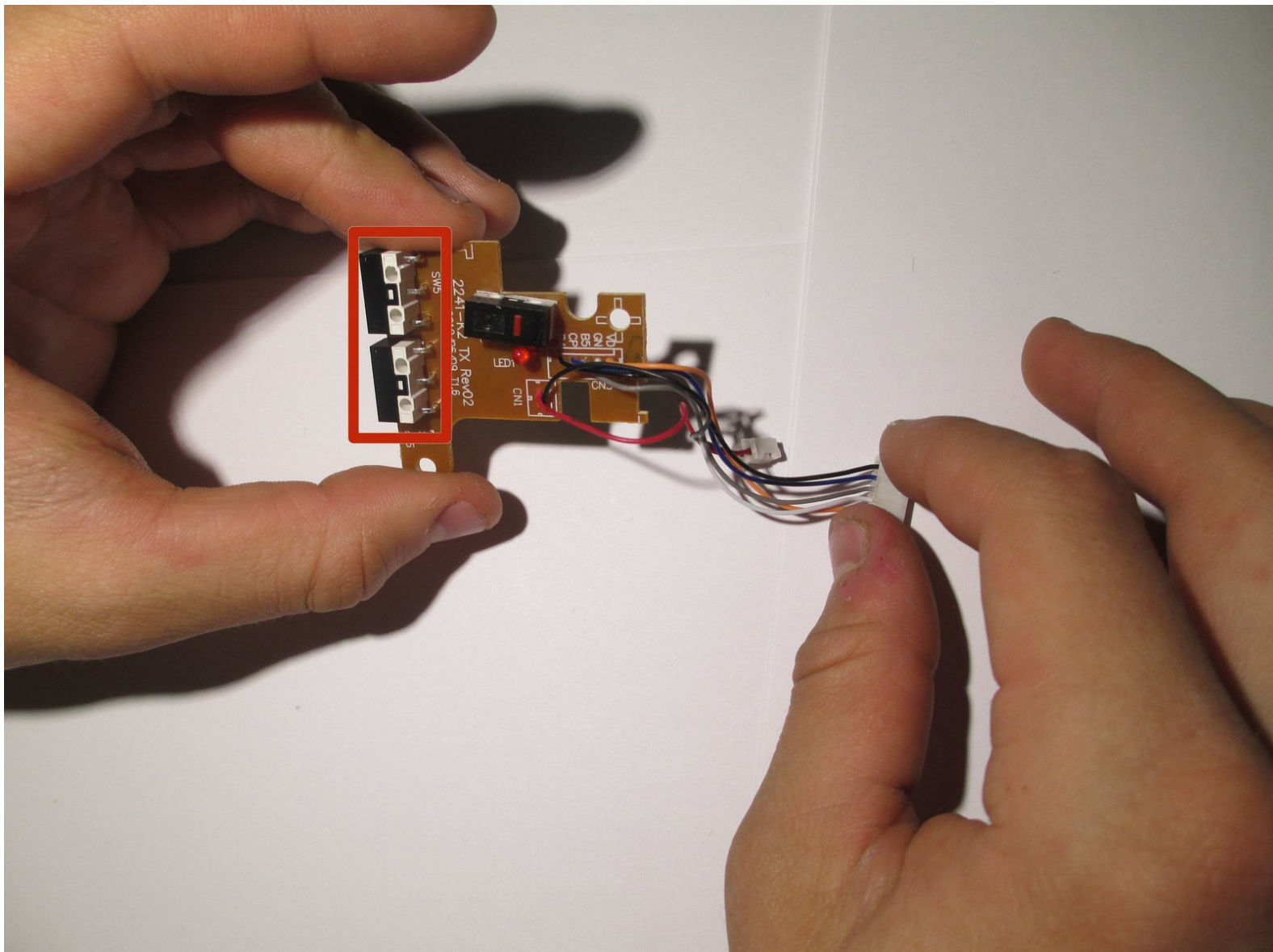




# Anker 2.4G Wireless Mouse Side Button Replacement

The Anker 2.4G Wireless Mouse is an ergonomic...

Written By: Andreas Apitz



## INTRODUCTION

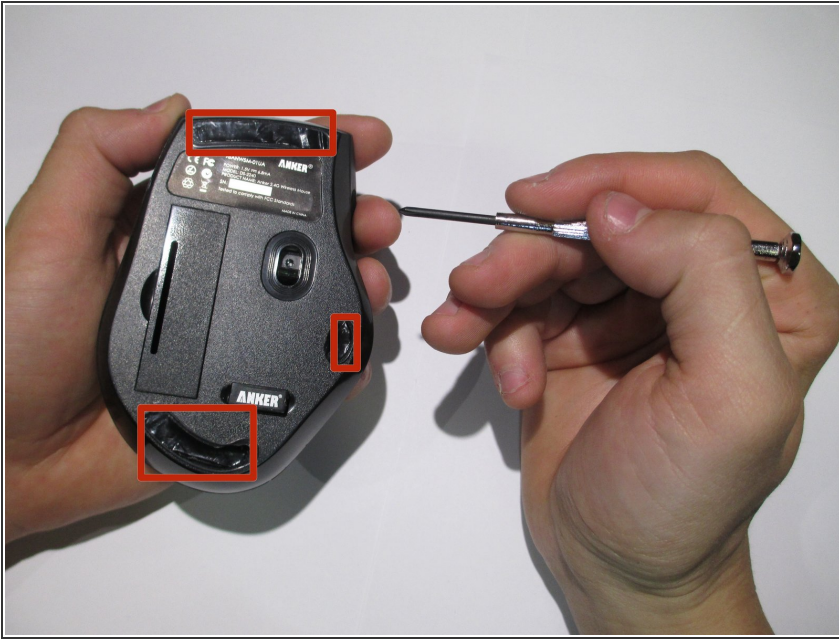
The Anker 2.4G Wireless Mouse is an ergonomic mouse designed to provide fluid, strain-free web-browsing for users. Additional side buttons by the thumb indent included on the mouse increases browsing convenience. This guide details how to quickly and easily replace these side buttons.



### TOOLS:

- [Phillips #0 Screwdriver](#) (1)
  - [iFixit Opening Tool](#) (1)
  - [Soldering Workstation](#) (1)
  - [Prying and Opening Tool Assortment](#) (1)
-

## Step 1 — Side Button



- Flip the mouse over so that the bottom is facing up.
- Using a prying tool to peel off the black stickers from the bottom of the mouse.

## Step 2



- Using the Phillips #0 screwdriver, remove the four screws from the bottom of the mouse.



## Step 3



- Pry the panels apart gently using a plastic opening tool or spudger.

⚠ Potential for device damage: In the pictures provided, a Phillips #0 screwdriver is used to pry open the mouse. It's important to note that this isn't proper procedure. Accidental internal damage to devices may occur when using improper prying tools. To avoid this, when prying open devices, **always** use plastic opening tools or spudgers.

## Step 4



- After separating the halves, remove the housing wires from the white crimp headers to separate the upper and lower housing units of the mouse.

⚠ Potential for device damage: Pull as far up on the wire as possible to avoid ripping the wires.

## Step 5



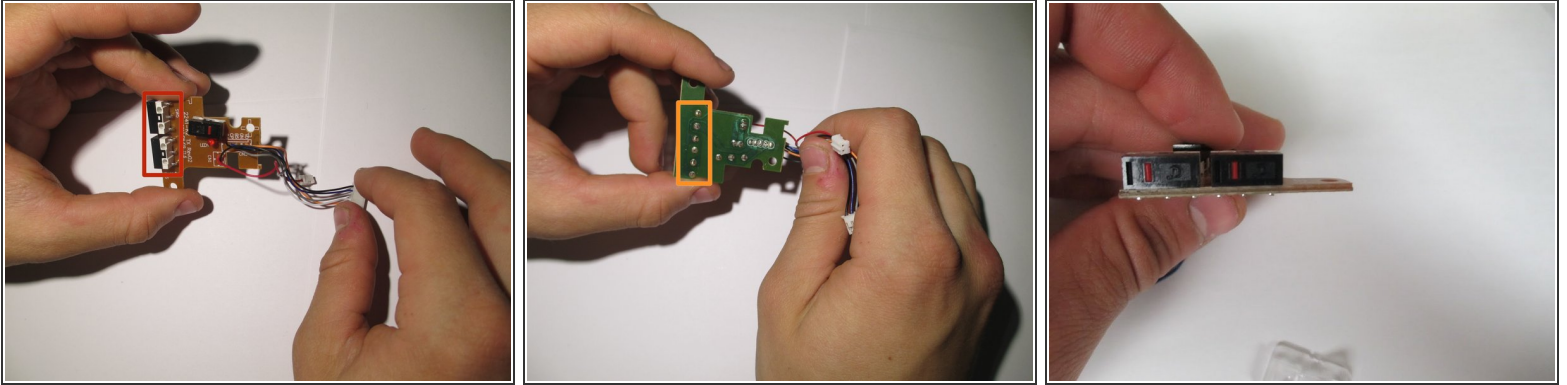
- Remove the two screws holding the board in place using a Phillips #0 screwdriver.

## Step 6



- Remove the board from the housing unit and place it aside.

## Step 7



- Left on the brown-colored bottom of the board, there are two black-and-white boxes. These are the side buttons.
- Flip the board over to reveal the green-colored side.
- Desolder the six silver pins to disconnect the side buttons.
- Once desoldered, remove the old side buttons.
- ☑ Resolder the pins of the new buttons onto the board.

To reassemble your device, follow these instructions in reverse order.