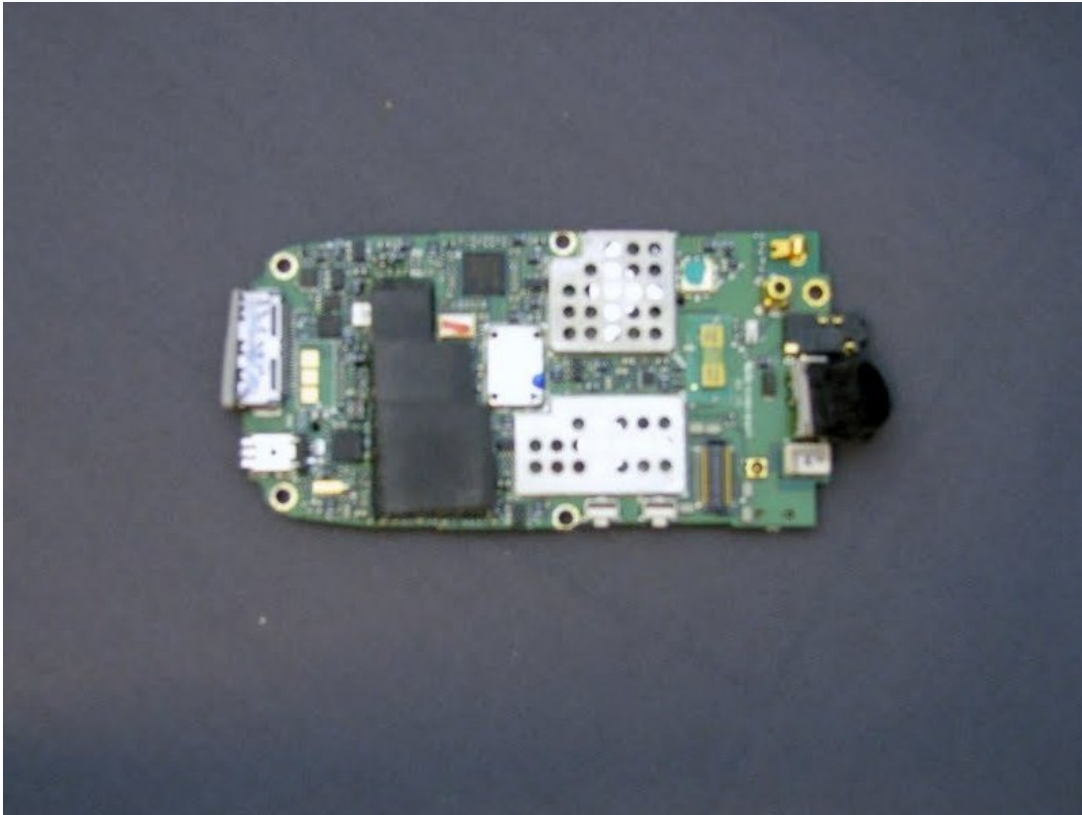




Audiovox CDM-8900 Camera Replacement

The Audiovox CDM-8900 is a flip phone with a...

Written By: Aaron Shaw



INTRODUCTION

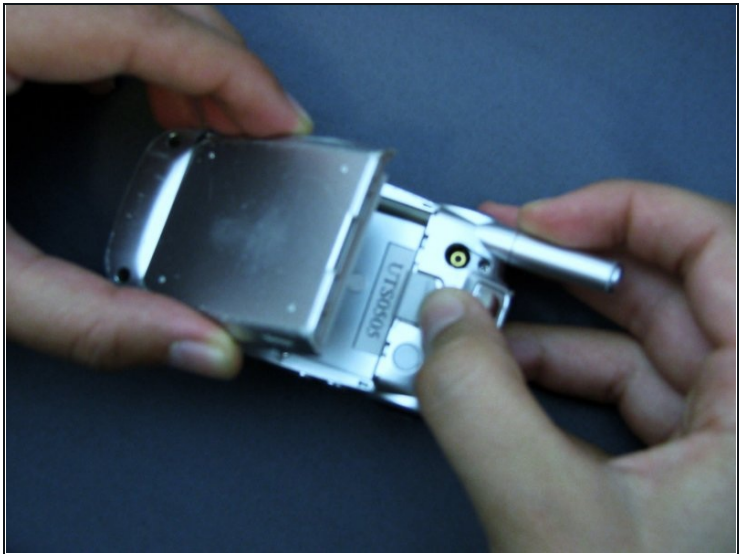
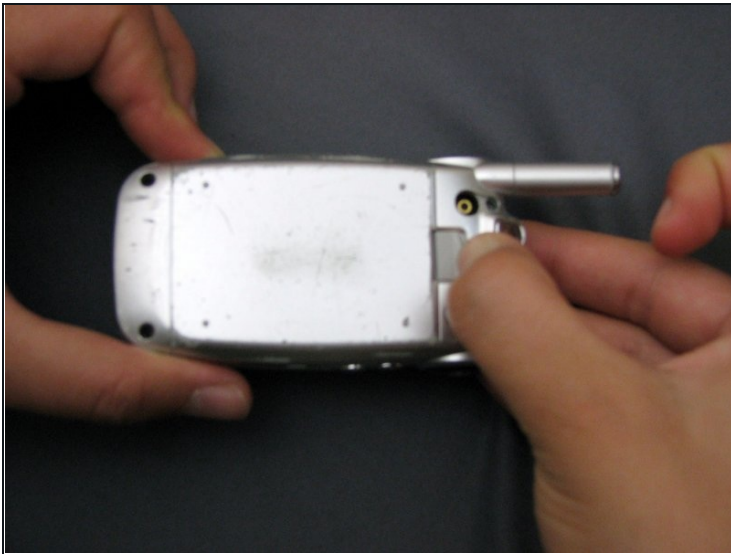
The Audiovox CDM-8900 is a flip phone with a camera and blue lights on either side of the hinge. In the case where you would have to replace the camera, you would have to remove the camera from the logic board of the cell phone prior. You may do this with the following guided steps.

TOOLS:

[Phillips #00 Screwdriver](#) (1)

[iFixit Opening Tool](#) (1)

Step 1 — Battery



- Hold the phone in one hand, slide the latch up, and pull the battery up to remove it.

Step 2 — Antenna



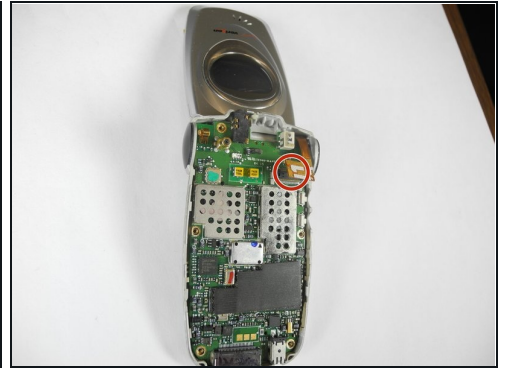
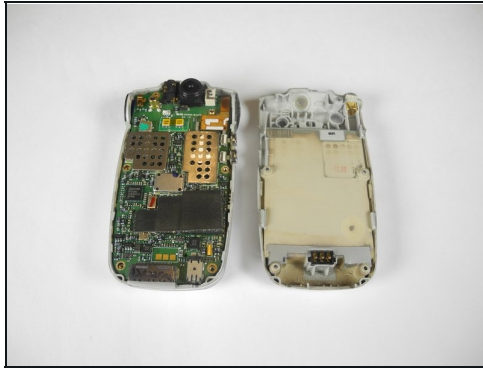
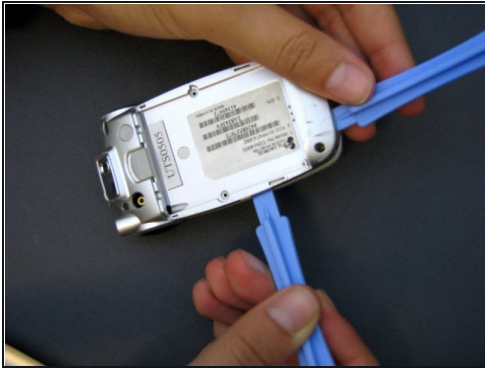
- Grasp the antenna at its base and twist to unscrew.
- ① Remove the antenna along with its plastic casing from inside the battery housing. Keep the antenna in the plastic casing for reassembly.

Step 3 — Motherboard



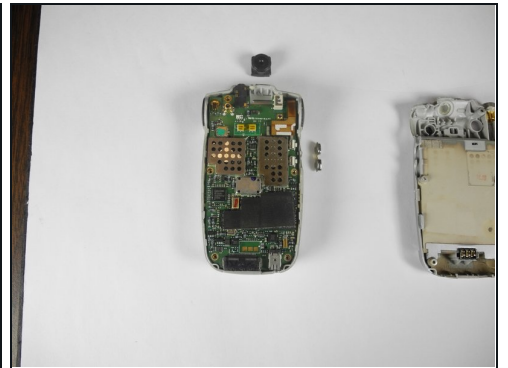
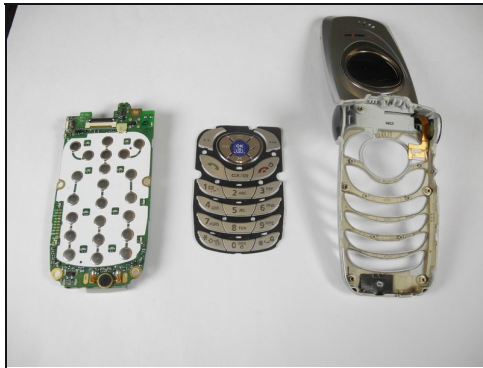
- Remove the small rubber insert from the top of the phone to access the top screw.
- Unscrew all five screws on the back of the cell phone with a Phillips #00 screwdriver.
- ① If screws do not slide out after unscrewing, gently flip and tap the phone in your hand until the screws come loose.

Step 4



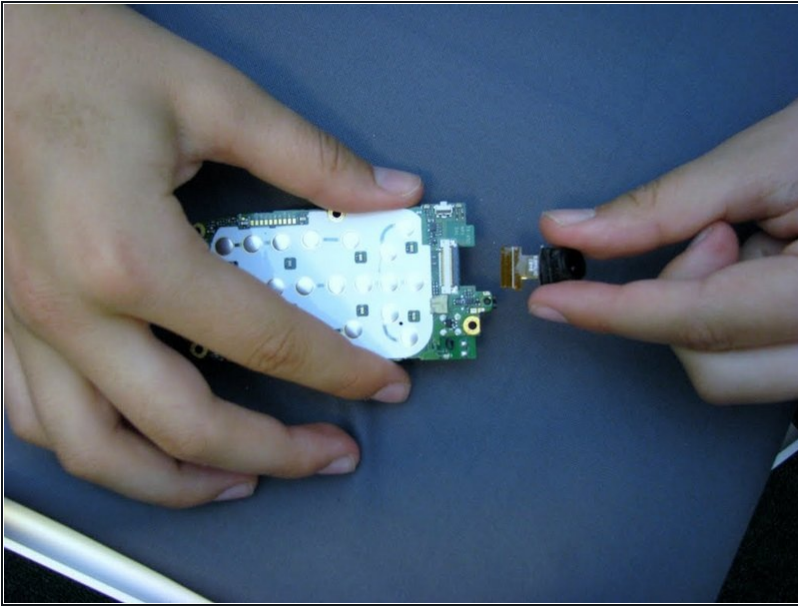
- Wedge the phone plate toward you, using the leverage from an opening tool.
- ☑ The volume control button on the left side of the phone will loosen. Make sure to carefully reinsert it during reassembly.
- Detach the motherboard from the LCD screen connector by gently detaching the small copper plate on the top right of the motherboard.

Step 5



- To release the motherboard, push the large "OK" button located on the other side of the phone.
- ☑ Before reassembly, make sure the keypad is lined up with the motherboard. Be sure the camera lens is properly aligned at the top of the motherboard and the volume controls are in place.

Step 6 — Camera



- Grasp camera.
- Slide the camera out of slot on the logic board.
- ① Camera is difficult to reassemble; there is a white clip for easy camera replacement. Verify that you orient the camera correctly when reinserting.

To reassemble your device, follow these instructions in reverse order.