



Toshiba Satellite M45 Teardown

This guide details how to tear down the laptop from start to finish.

Written By: Bobby Davis

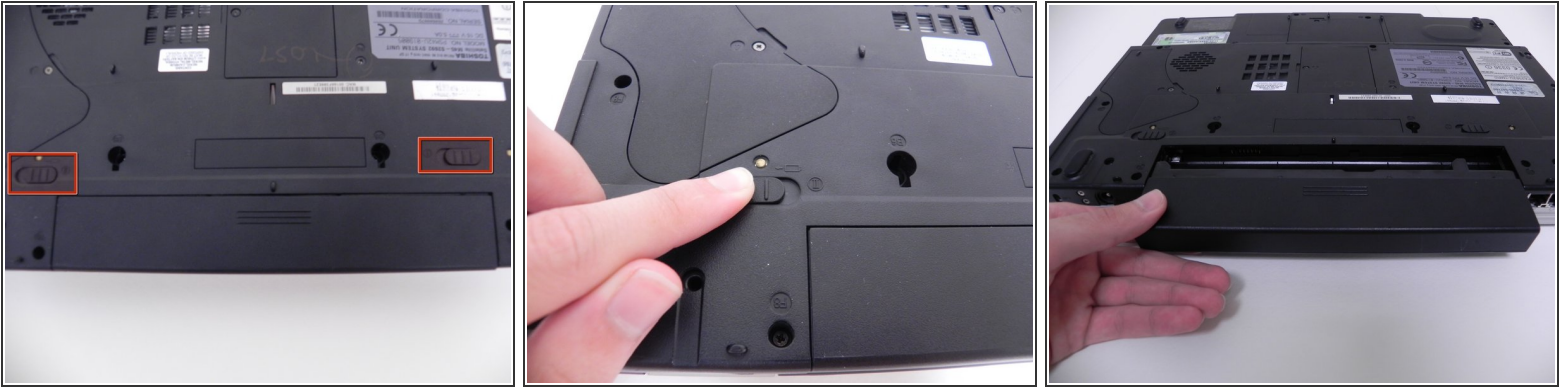




TOOLS:

- [Phillips #1 Screwdriver](#) (1)
- [Phillips #00 Screwdriver](#) (1)
- [iFixit Opening Tool](#) (1)

Step 1 — Battery



⚠ Make sure device is off and power supply is disconnected.

- Flip the laptop to the bottom side.
- Locate and slide the two battery locks to disconnect the battery.
- Remove the battery by sliding it out away from the computer (horizontal with the casing).

Step 2 — Optical Drive



- Use the #1 Phillips head screwdriver remove the Optical Drive screw.
- Use the blue iFixit Opening Tool to pry the Optical Drive out of the slot from the side of the casing.
- Use your hands to pull the rest of the Optical Drive out.

Step 3 — RAM



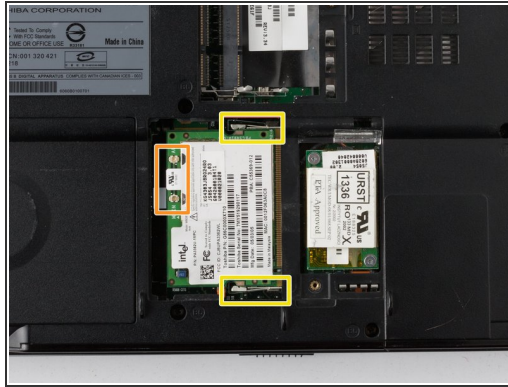
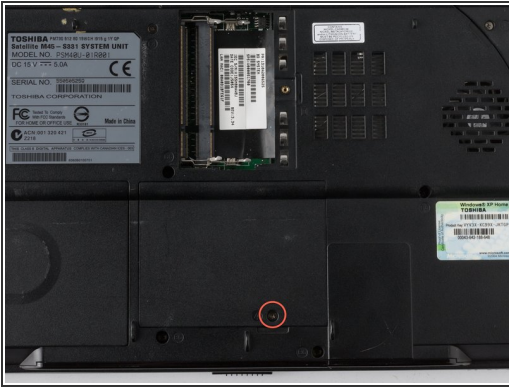
- Use a #1 Phillips head screwdriver to remove the screw on the middle right of the RAM's cover panel.
- Then, use a the blue iFixit Opening Tool to pry the cover panel off.
- Push on to the RAM tabs to disconnect the RAM form the device.
- The RAM will pop off from the socket. Gently pull the RAM out of the socket.

Step 4 — Hard Drive



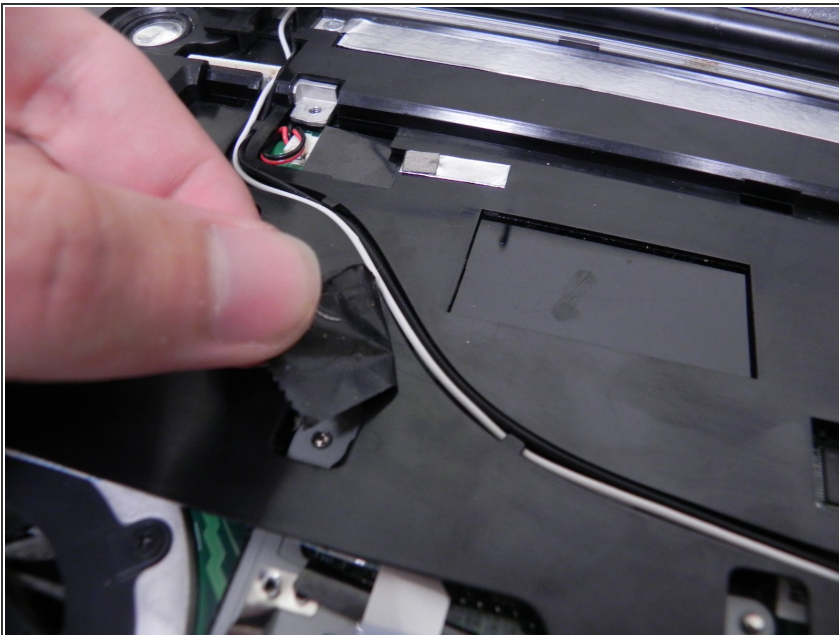
- Use the #1 Phillips head screwdriver as to remove the hard drive screw.
- Use the blue iFixit Opening Tool to pry the cover off.
- Use the plastic flap to pull the hard drive out of its slot.

Step 5 — Wi-Fi Card



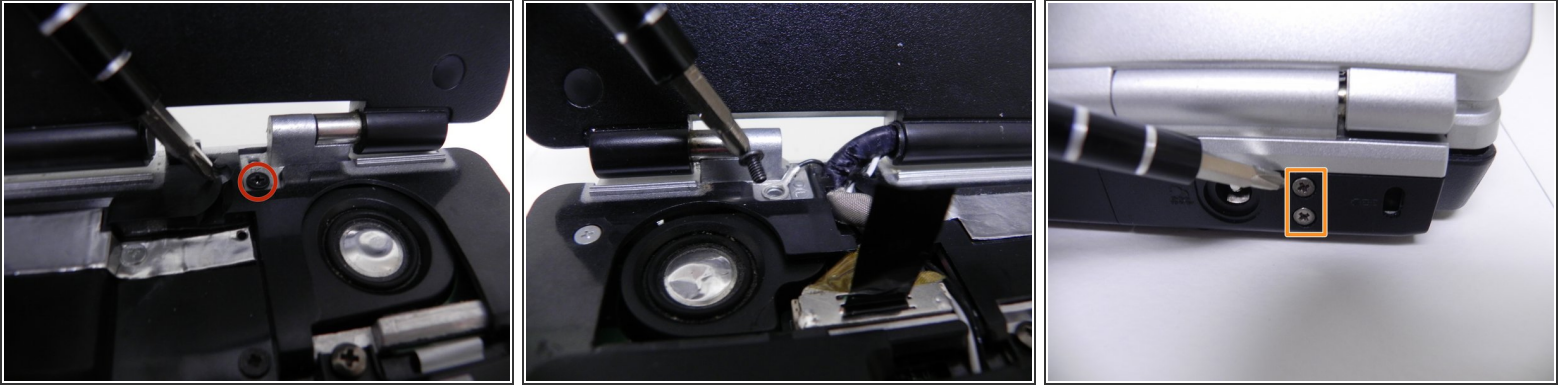
- Use the #1 Phillips head screwdriver to unscrew the panel.
- Disconnect the black and white wires.
- Push on the tabs to disconnect the Wi-Fi card.
- Use the blue iFixit Opening Tool to pull the Wi-Fi Card out.

Step 6 — Display



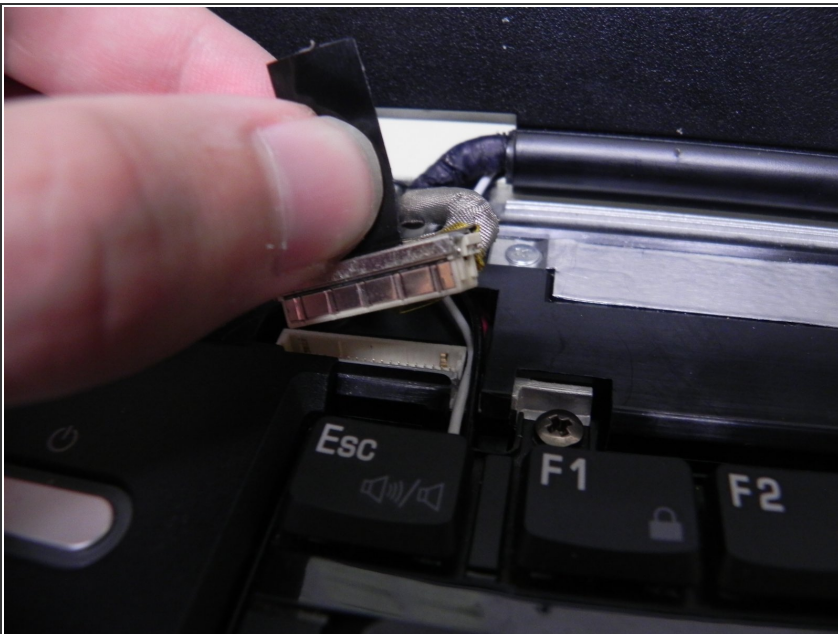
- Remove the 2-3 pieces of black electrical tape covering the black-and-white antenna cable.
- Close the display, flip the laptop over, and disconnect the black-and-white antenna cables from the Wi-Fi card.
- Flip the laptop back over and open the display.

Step 7



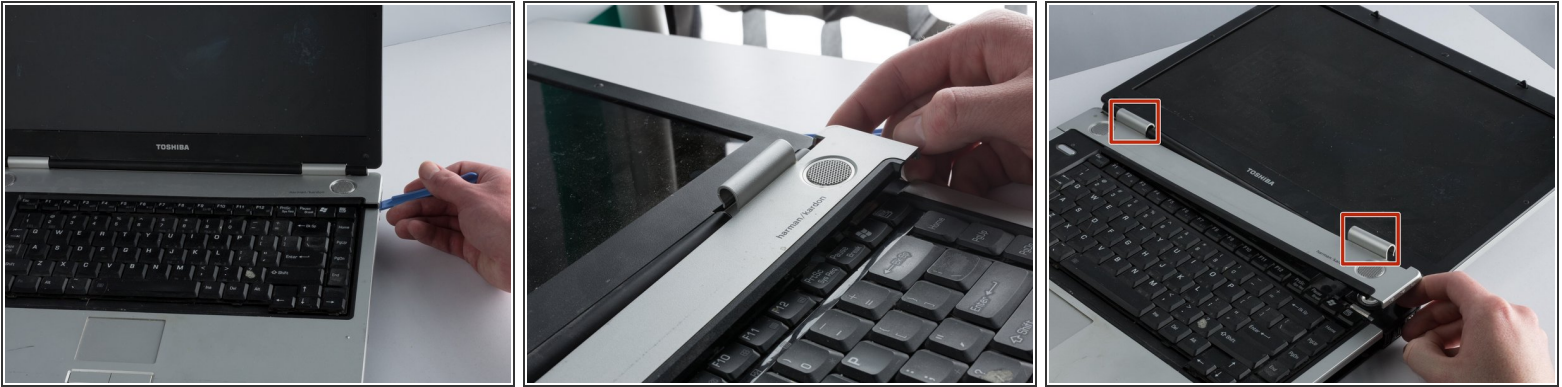
- Remove the two Phillips #1 screws securing the display hinges.
- ⓘ It is recommended to keep the screws in a small cup so that you don't lose them.
- Remove the four Phillips #1 screws on the back of the laptop.

Step 8



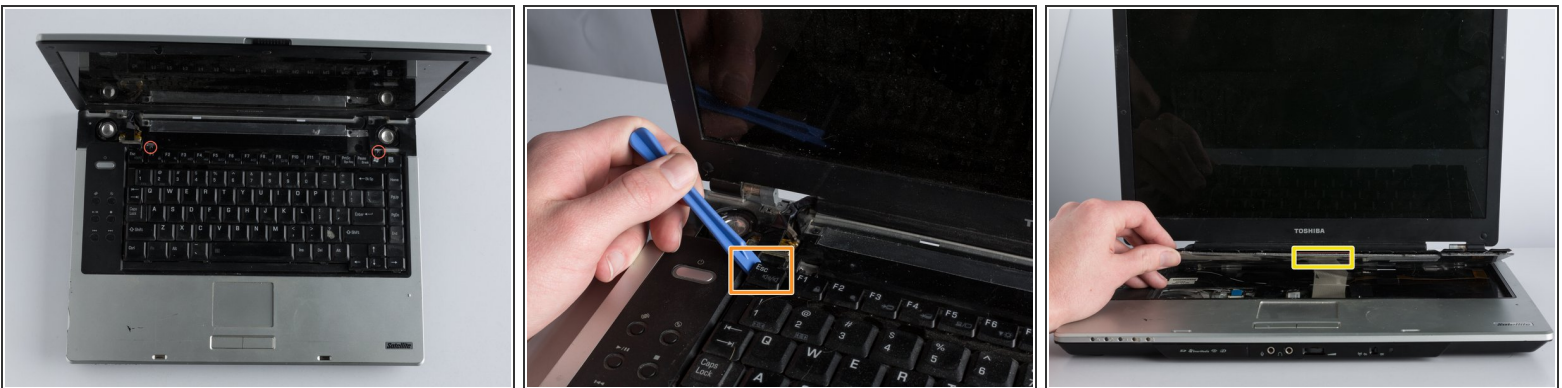
- Gently pull up on the display's video connector to remove it.
- Remove the black-and-white antenna cable from the groove.
- Your display can now be removed.

Step 9 — Keyboard



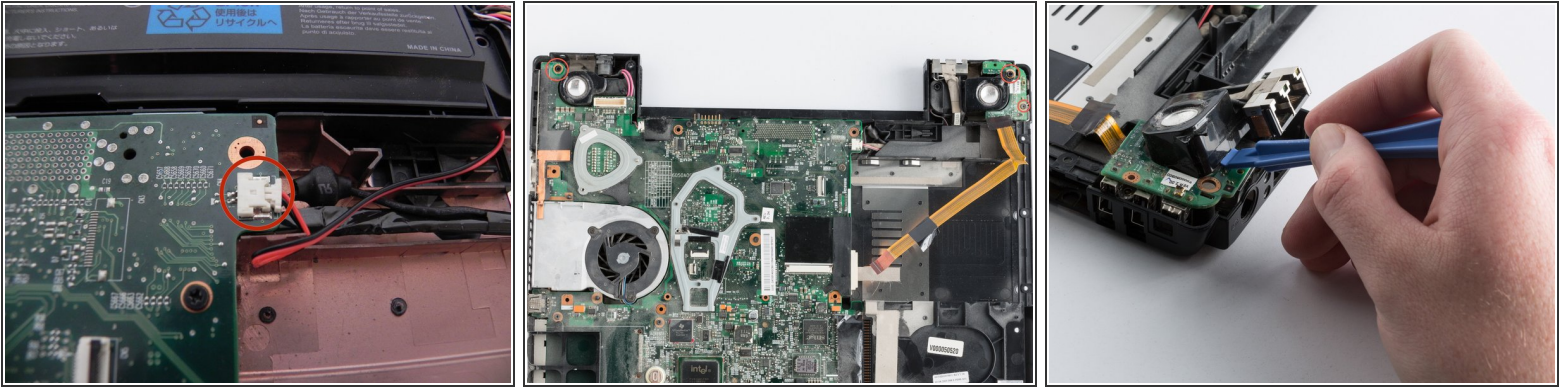
- Carefully use the blue iFixit Opening Tool to pry the panel above the keyboard from the left and right side.
- Push back the screen until it is flat with the laptop.
- Gently remove the clips that connect the panel to the screen.

Step 10



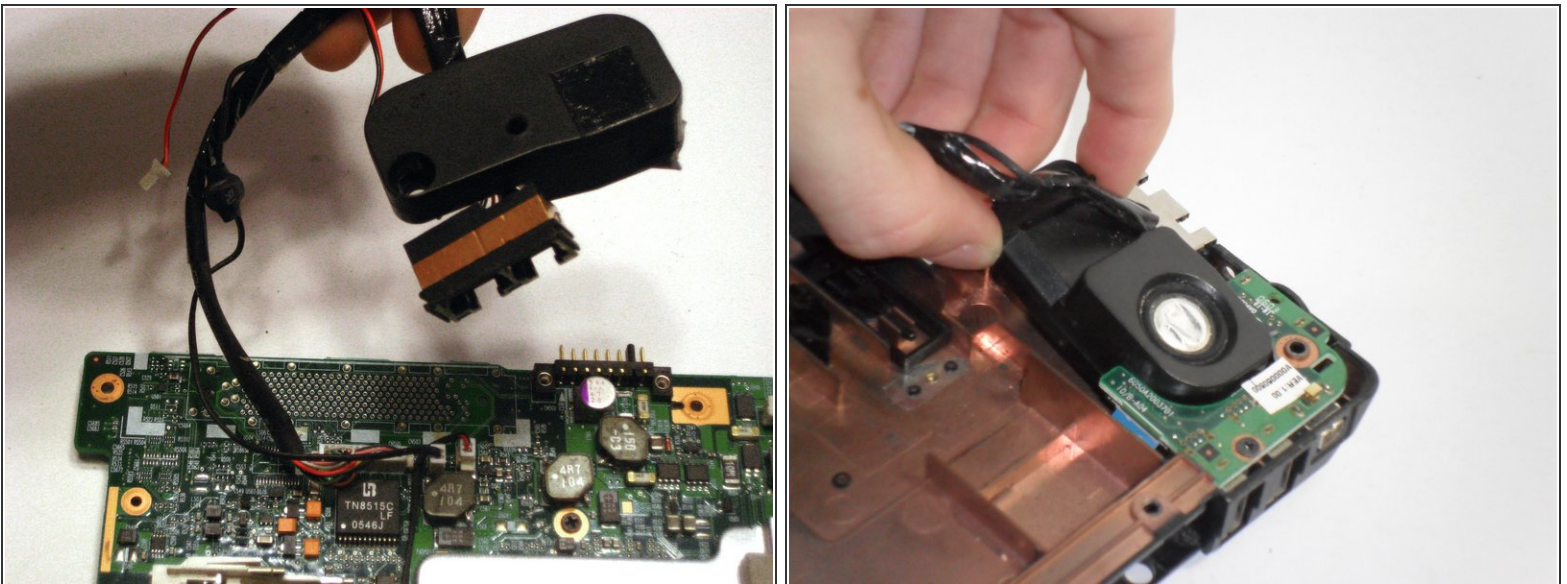
- Use the Phillips #1 screwdriver to remove the two screws.
 - Gently pry the keyboard from the laptop using the blue iFixit opening tool.
 - Slowly lift the keyboard away from the laptop.
 - Remove the ribbon that connects to the laptop.
- ⚠ Ensure you remove the keyboard slowly to avoid damaging the ribbon cable.

Step 11 — Speakers



- Located near the upper edges of the motherboard you will find the 2-speaker wires that trace to the speakers. You will see these white tab with black and red wires.
- Unscrew the 2-screws located above the speakers to remove them. Slowly pull up on the speakers as there are other port connectors are located near the wiring.

Step 12



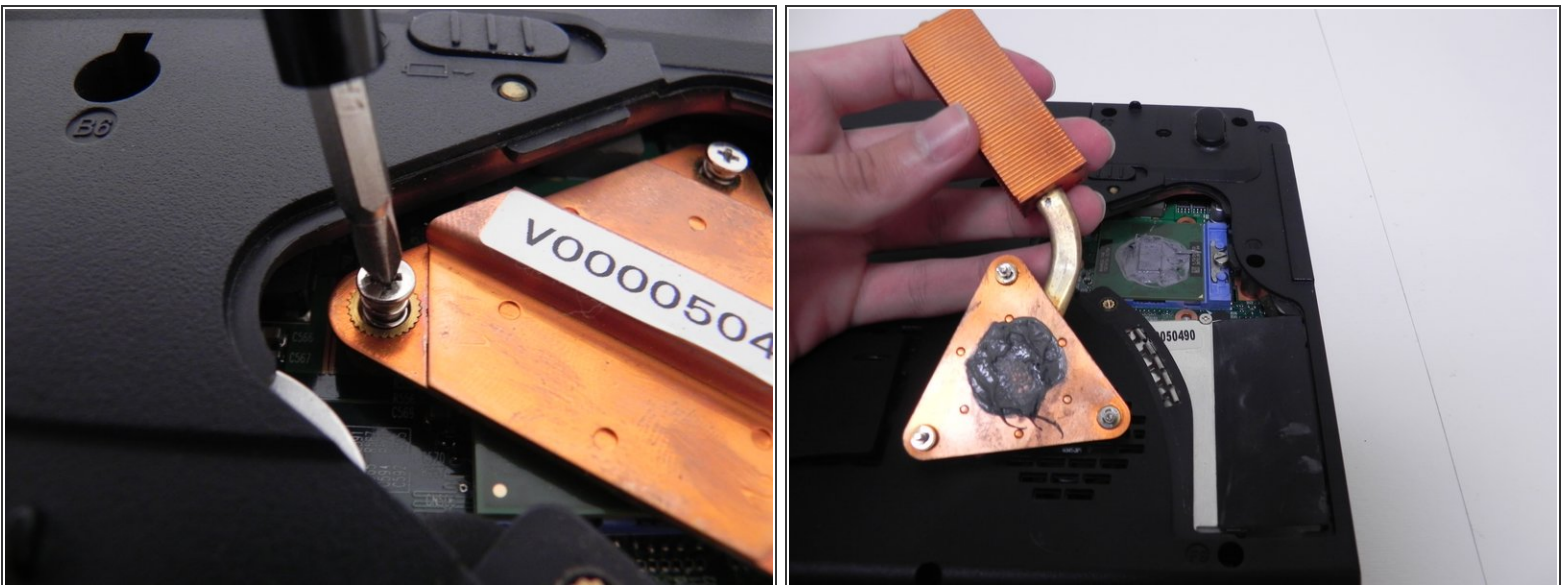
- To remove the left speaker follow the motherboard repair guide to complete this step to keep this guide concise.
- Reverse the order after installing the new speakers.

Step 13 — Cooling Unit



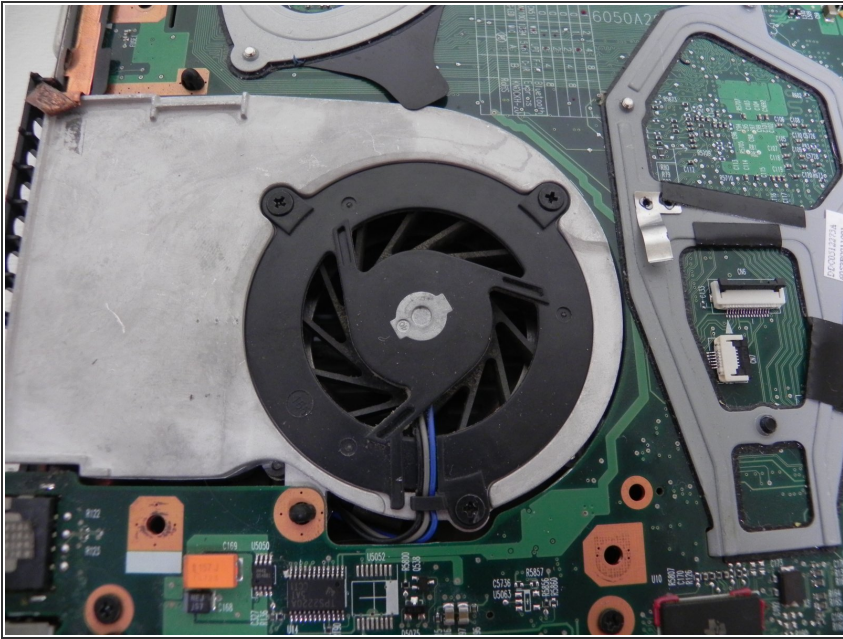
- Remove the cover from the cooling unit.

Step 14



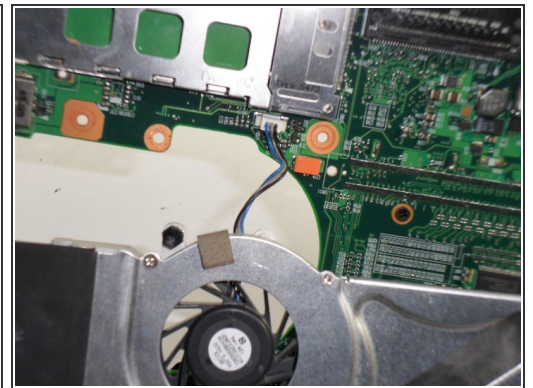
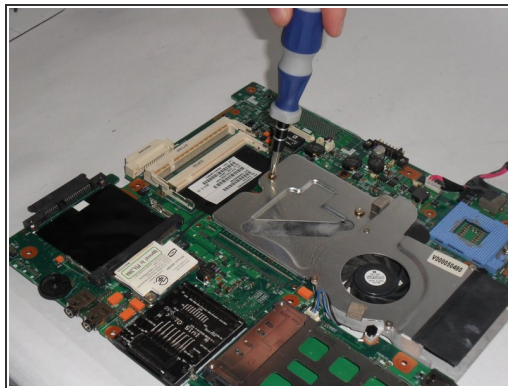
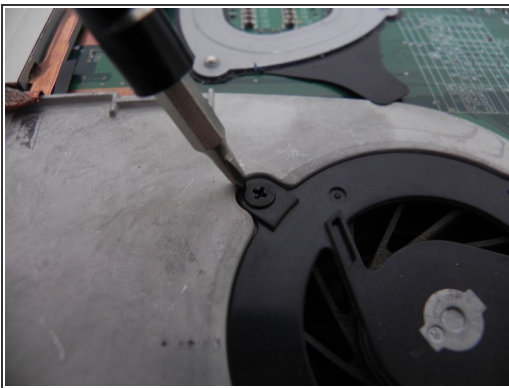
- Unscrew the copper heat-sink using a #1 screwdriver, and then lift it free. Do not get any thermal grease on any components. This part can now be replaced.

Step 15



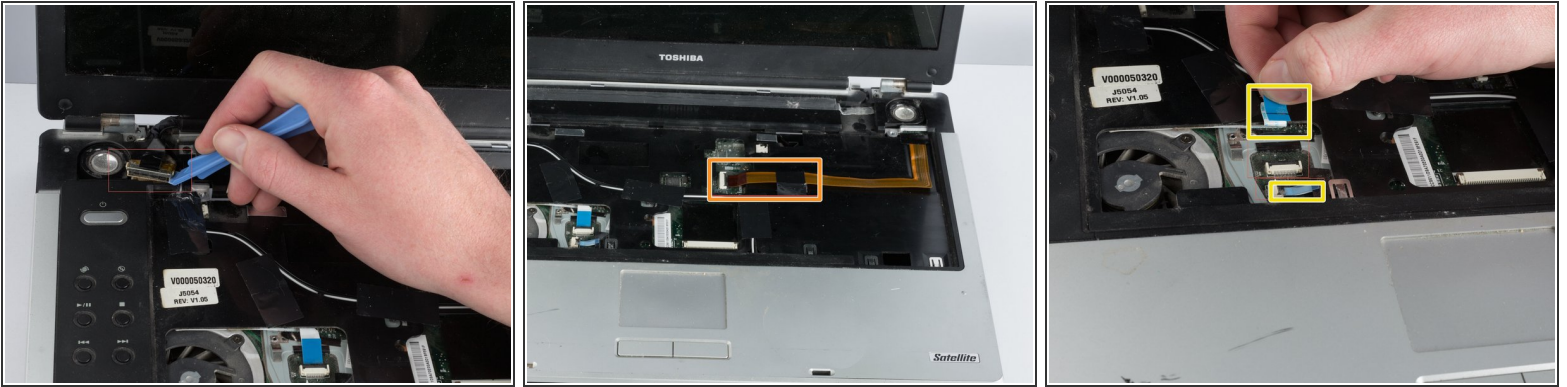
- Follow the tear-down guide until you have access to the fan unit on the motherboard.

Step 16



- Unscrew the fan unit from the motherboard using a #0 screwdriver. Once the fan is unscrewed and unplugged from the motherboard, it can be replaced.

Step 17 — Motherboard



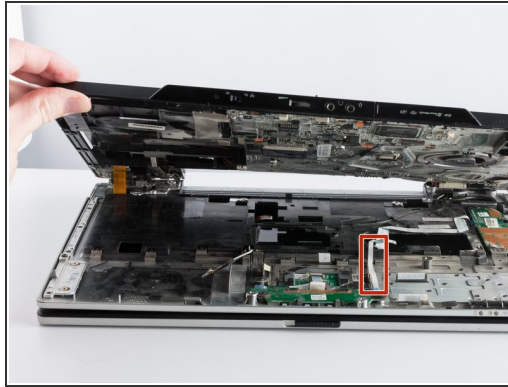
- Disconnect the video cable, then slowly and firmly pull the video cable upwards.
- Disconnect the brown ribbon located in the middle area of the laptop.
- Disconnect the two white ribbons located in the bottom left of the laptop.
 - Firmly pull out the two white ribbons.

Step 18



- Use the Phillips #00 Screwdriver to unscrew all the screws.
- Unscrew three additional screws through the three holes on the optical drive.

Step 19



- Turn the laptop upside down.
 - Use the blue iFixit Opening Tool to slowly pry the case upward.
 - Remove the white ribbon
- i** Make sure to completely remove the white ribbon and set it to the right side of the motherboard. and not on top of the motherboard.

Step 20



- Lift up the motherboard.
- i** Be careful not to rip out small components on the motherboard. Carefully remove the motherboard.

Step 21 — Toshiba Satellite M45 Teardown



- Congratulations, your computer has been completely dismantled!
- Now, reverse the steps to reassemble.

To reassemble your device, follow these instructions in reverse order.