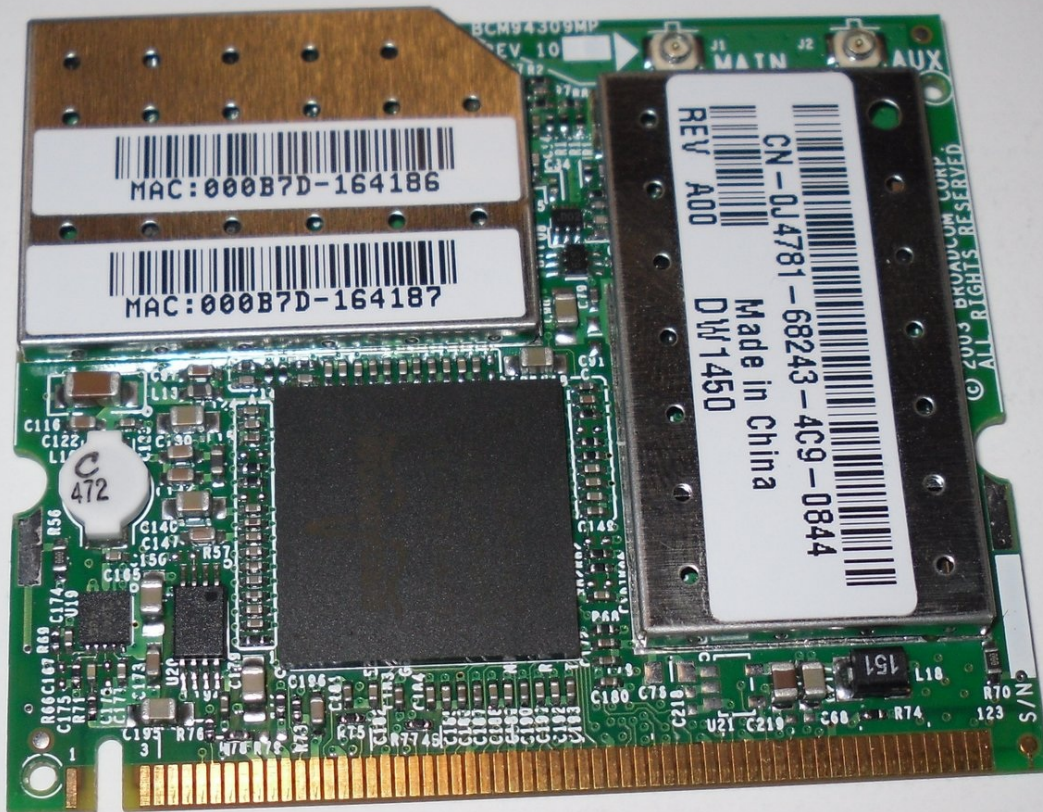




Removing Dell Inspiron 1150 Mini Wireless PCI Card

The purpose of this guide is to demonstrate how...

Written By: Teja



INTRODUCTION

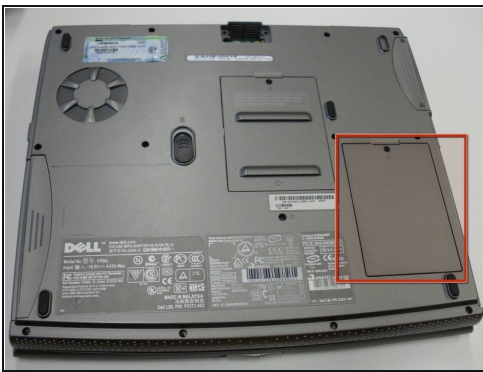
The purpose of this guide is to demonstrate how to locate and remove the 1150 Wireless MiniPCI Card.

TOOLS:

Phillips #00 Screwdriver (1)

Spudger (1)

Step 1 — Mini Wireless PCI Card



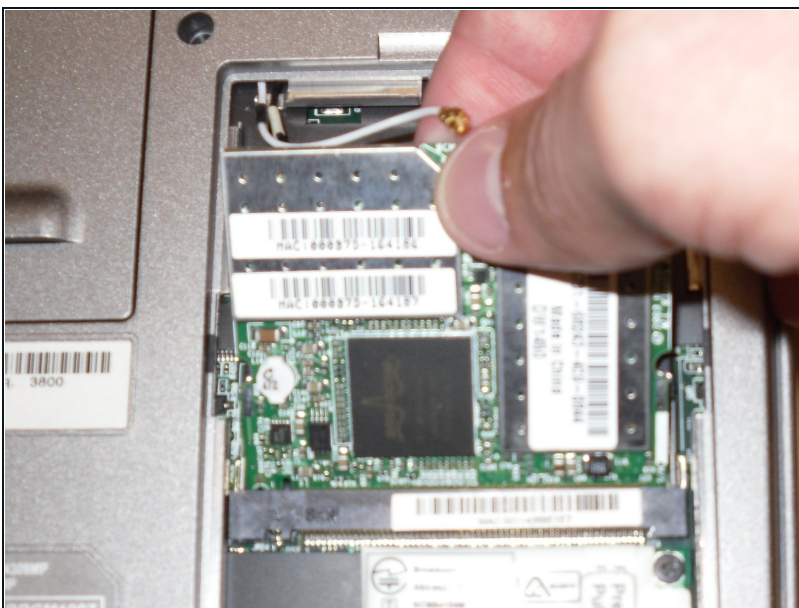
- Turn the laptop upside down and locate the panel labeled C.
- Unscrew the single screw holding the cover in place.
- Lift up the cover and remove it to expose the Wireless MiniPCI Card.

Step 2



- Using a plastic spudger or similar, gently pry the grey and black wires off.
- ⚠ The grey and black wires are the antenna wires so be careful not to damage them
- Gently pull the retaining clips away from the board so that the board pops up.

Step 3



- Lift the board up and out of the mini PCI slot at an angle of about 35 - 45 degrees

To reassemble your device, follow these instructions in reverse order.

