



Olympus Stylus 1030 SW LCD and Button Replacement

Written By: Shanmei Zheng

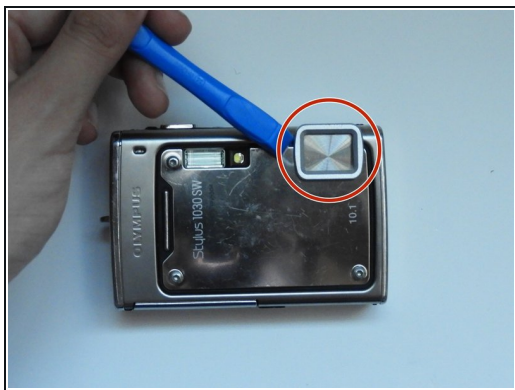




TOOLS:

- T6 Torx Screwdriver (1)
- Phillips #00 Screwdriver (1)
- Spudger (1)
- iFixit Opening Tool (1)
- Tweezers (1)

Step 1 — Olympus Stylus 1030 SW Camera Disassembly



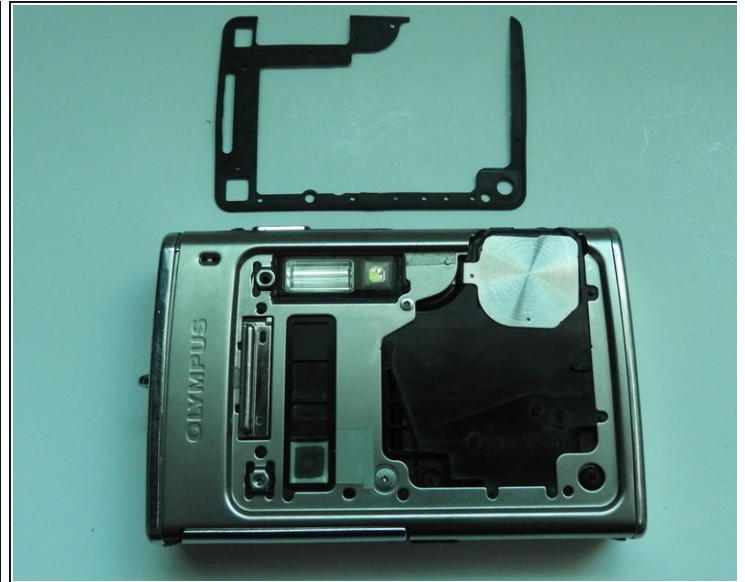
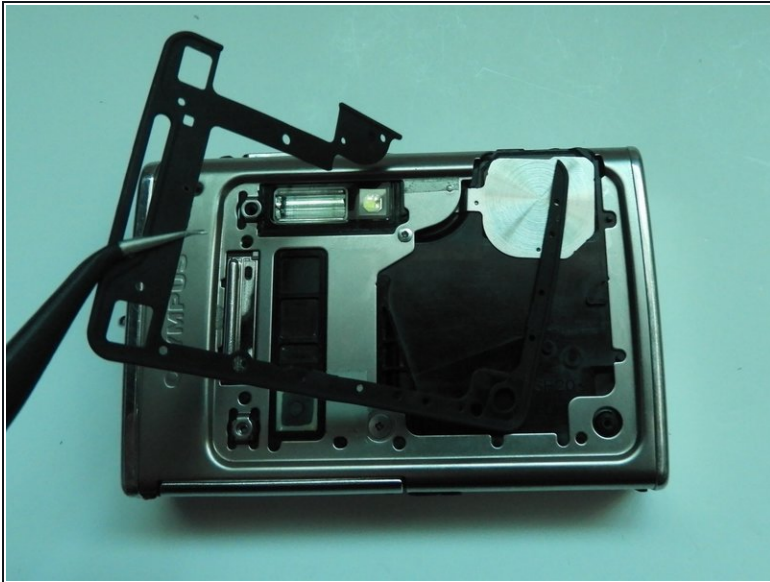
- Using the iFixit Opening Tool, pry off the plastic part of the lens.
- Using the T6 Torx screwdriver, unscrew the three screws.

Step 2



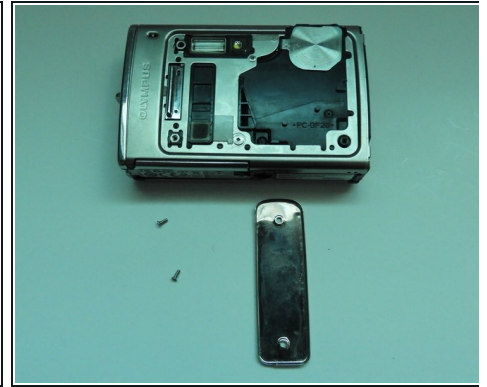
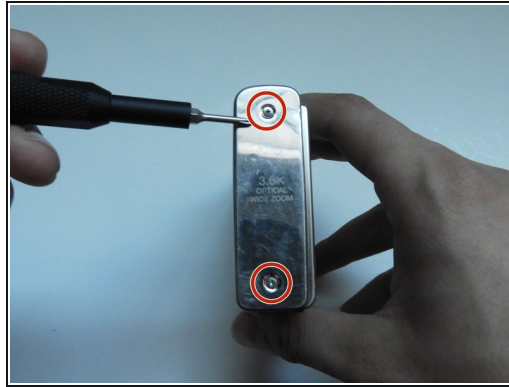
- Using the Phillips #00 screwdriver, unscrew the three screws.
- Carefully swivel the metal cover out towards you.
- Using tweezers, remove the metal washer.

Step 3



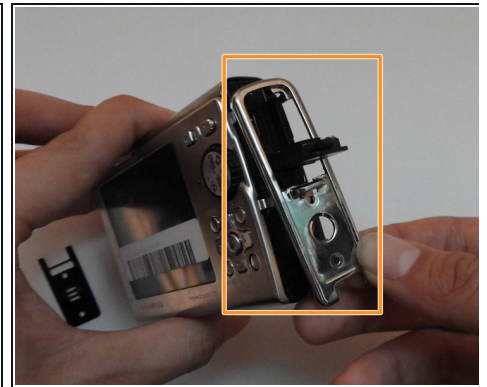
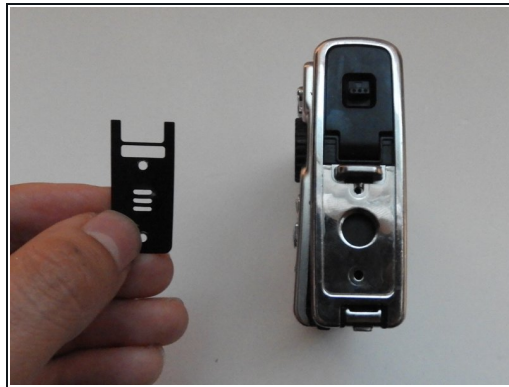
- Using the tweezers, slowly peel off the plate.

Step 4



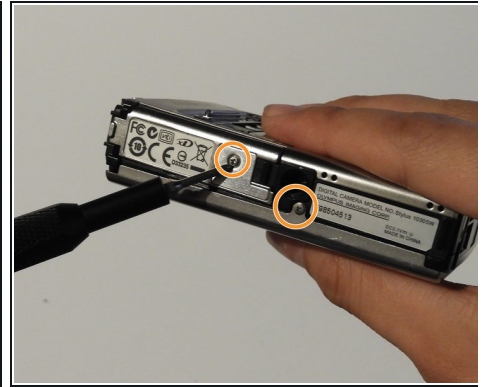
- Using the Phillips #00 screwdriver, unscrew the two screws on the side of the camera.

Step 5



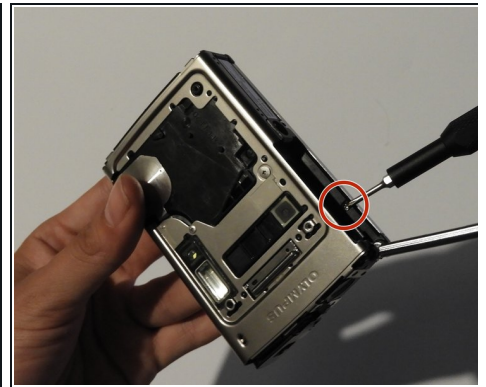
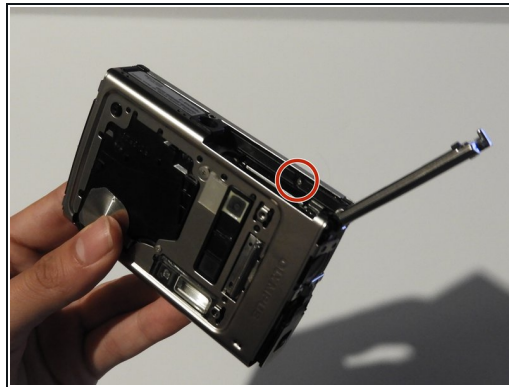
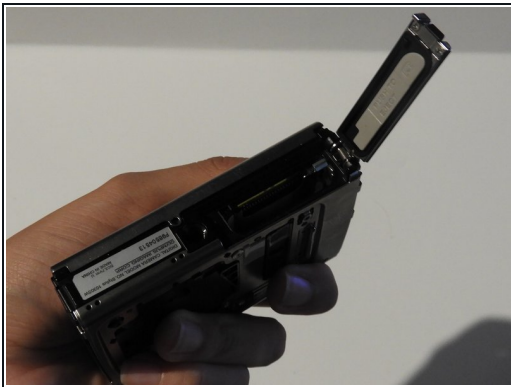
- On the opposite side, use the Phillips #00 screwdriver to unscrew both screws.
- Take out the speaker plate.
- Open the multi-connector cover and slide off the side panel.

Step 6



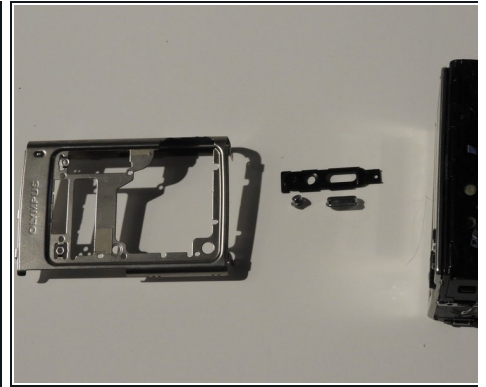
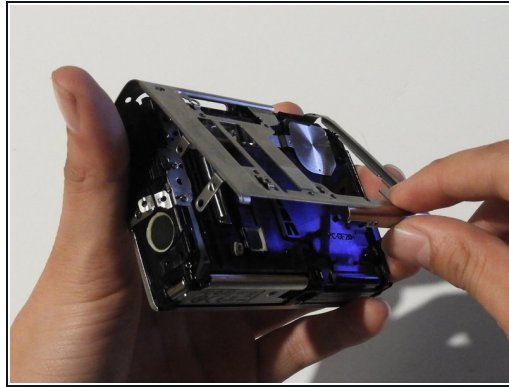
- Using the Phillips #00 screwdriver, unscrew the screw above the speaker.
- On the bottom side of the camera, unscrew the two screws.

Step 7



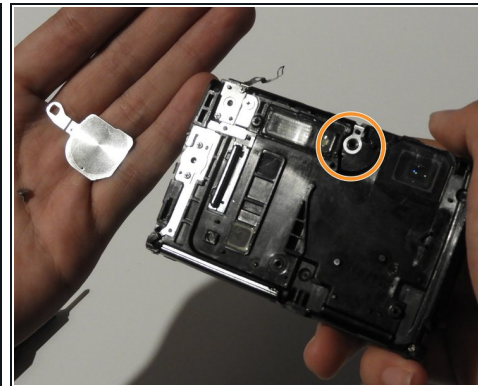
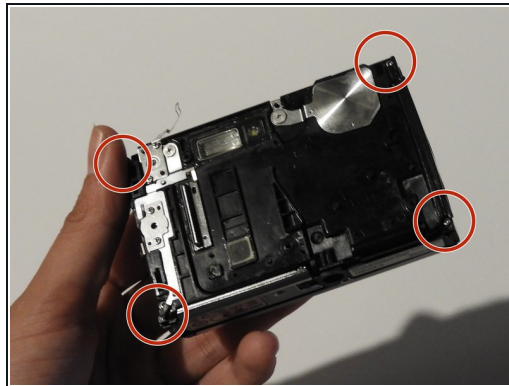
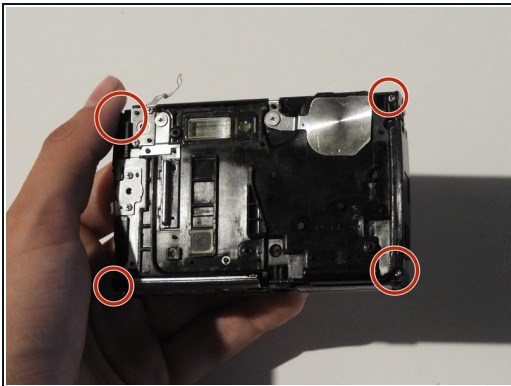
- Open the battery compartment cover.
- Use the Phillips #00 screwdriver to unscrew the screw in the battery compartment.

Step 8



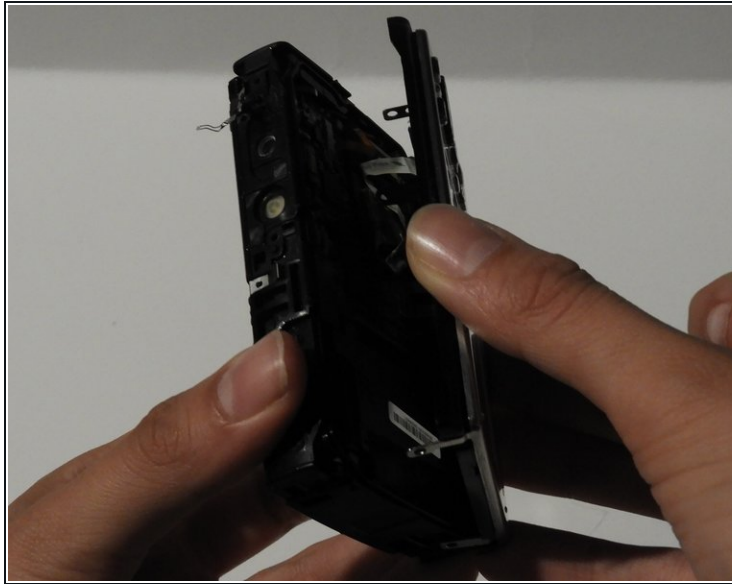
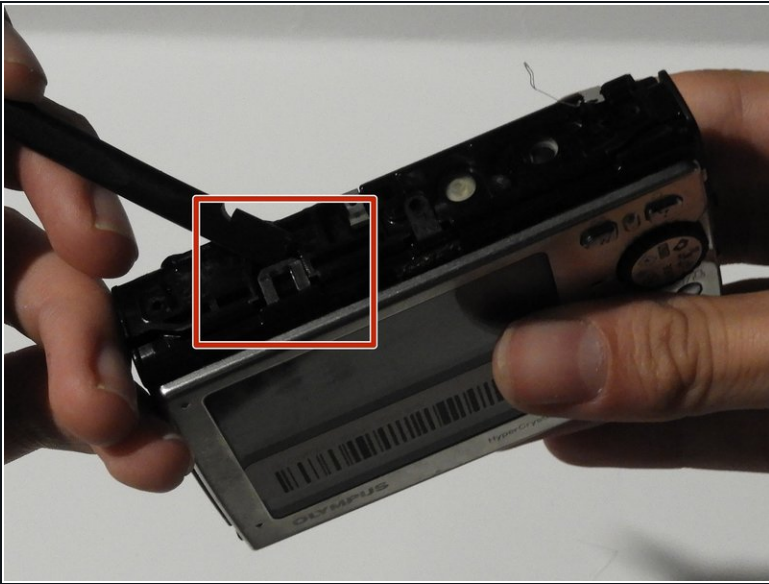
- On the front of the camera, unscrew the two screws shown.
- Gently pull on the side until the camera is separated from the back panel.
- Remove the shutter and power button.

Step 9



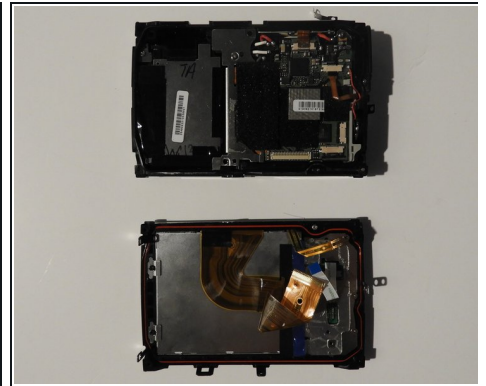
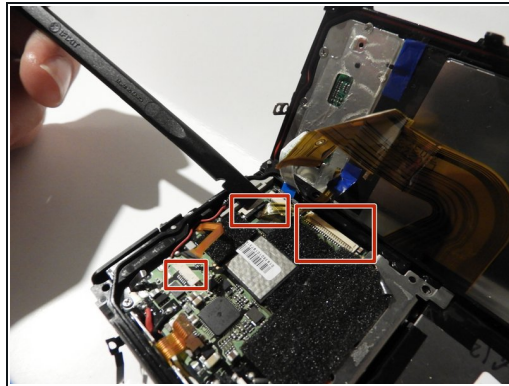
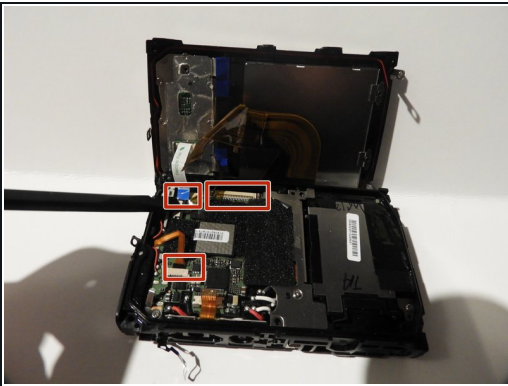
- Use the Phillips #00 screwdriver to unscrew the four screws on the front of the camera.
- Unscrew the shutter using the Phillips #00 screwdriver.

Step 10



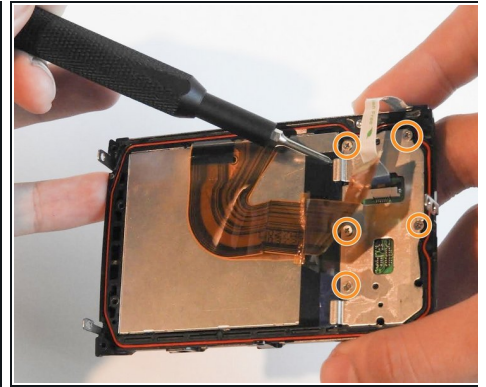
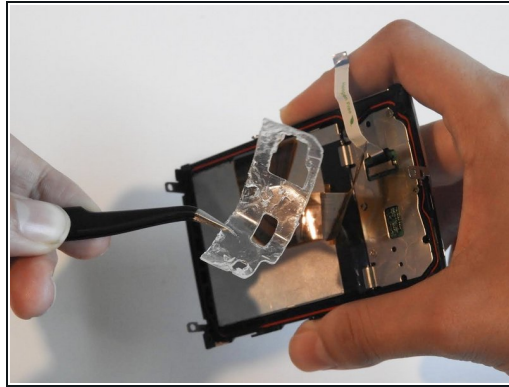
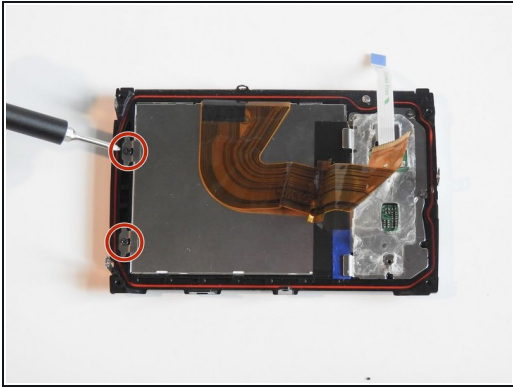
- Release the top holding using a spudger.
- Slowly and carefully separate the front and back of the camera, exposing the electrical ribbons.

Step 11



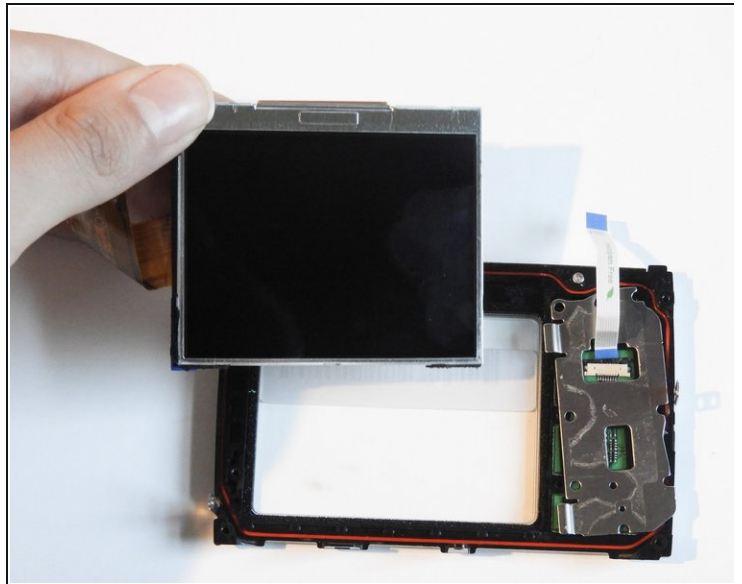
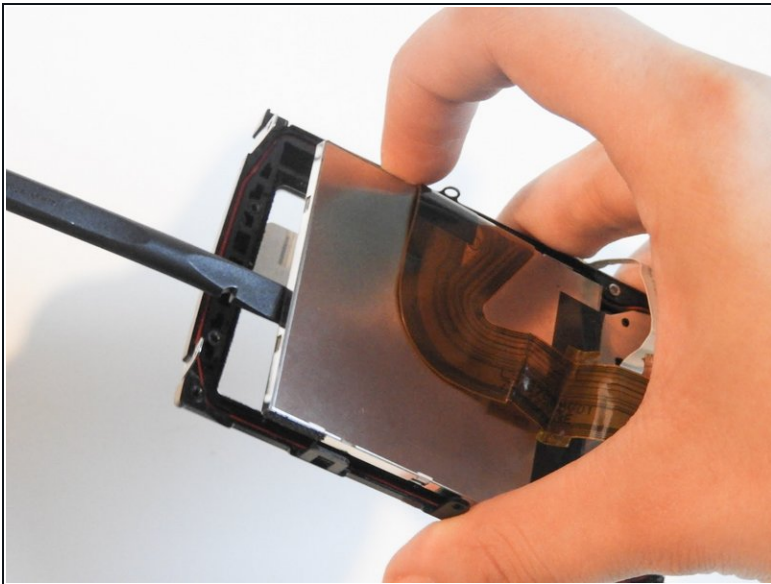
- Using the spudger and tweezers if needed, remove the ribbons from the computer chips.

Step 12 — LCD and Buttons



- Unscrew the two screws found on the left side of the screen using the PH#00 head.
- Peel off the gel tape using tweezers.
- Unscrew the five 0.6 mm screws using the Phillips #00 screwdriver.

Step 13



- Use the spudger to carefully pry off the LCD screen.

Step 14



- Use the tweezers to take out the rubber button holder and its buttons.

To reassemble your device, follow these instructions in reverse order.