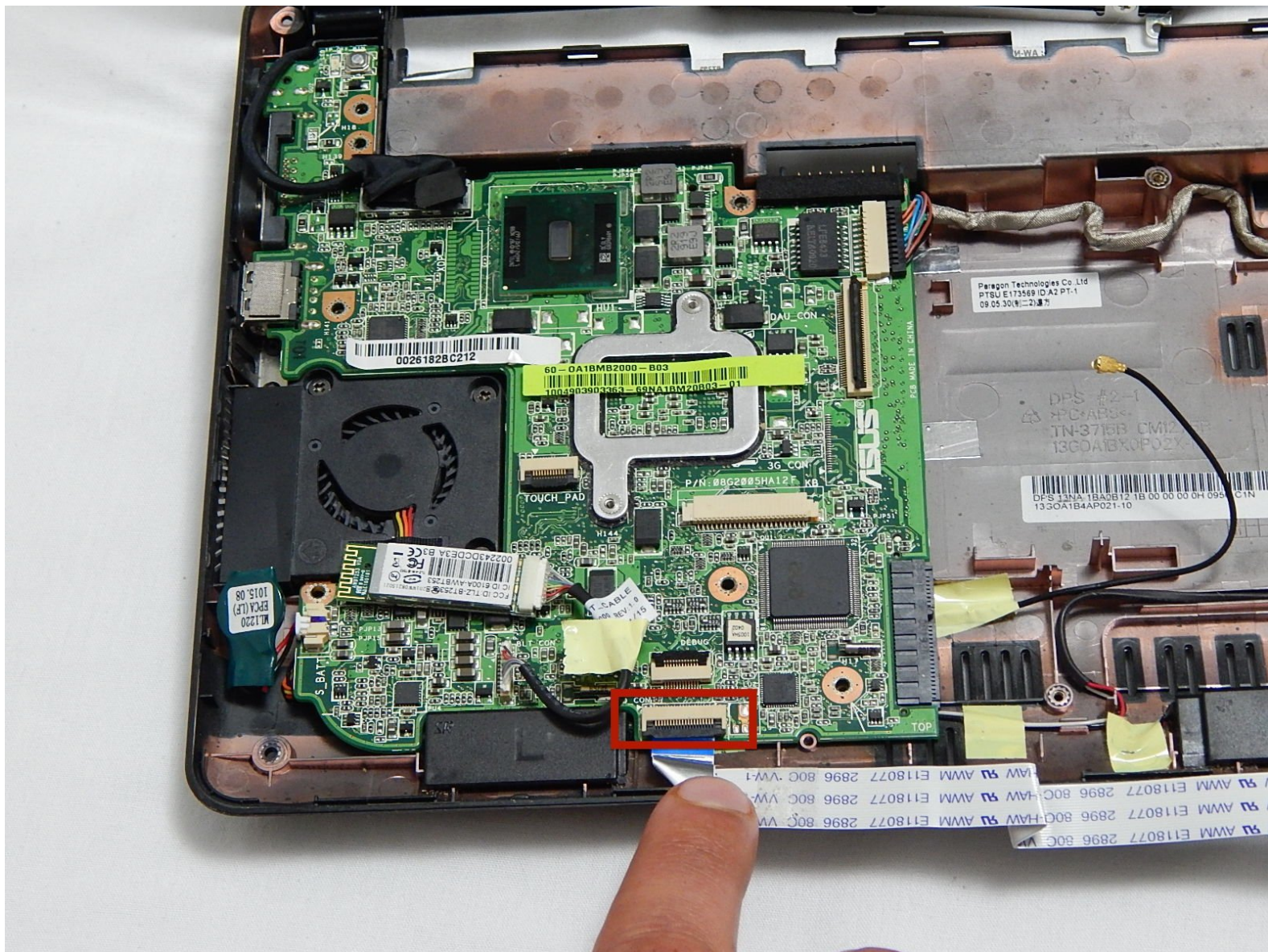




Asus Eee PC 1005HA Fan Replacement

This guide will show you how to replace the fan...

Written By: Maged Hanna



INTRODUCTION

This guide will show you how to replace the fan in an Asus Eee PC 1005HA laptop. There are some fragile pieces exposed during this process: the touch pad ribbon, the LEDs at the top of the casing under the keyboard, the WiFi antenna, and the motherboard. With some base level of care these components should be fine, they're meant to be moved around. Take it slow, it's easier than it looks!

This guide goes through the process of removing both the fan and the WiFi antenna, so if you're looking to replace either this will help. It also accesses the hard drive and SD card module, so it may help if you're looking to replace your hard drive or ensure your SD card module is working.



TOOLS:

- [2.5 mm Flathead Screwdriver](#) (1)
- [Spudger](#) (1)
- [iFixit Opening Tool](#) (1)
- [Phillips #2 Screwdriver](#) (1)
- [IFixit Phillips #00 Screwdriver](#) (1)



PARTS:

- [Asus Eee PC 1005HA Battery](#) (1)

Step 1 — Battery



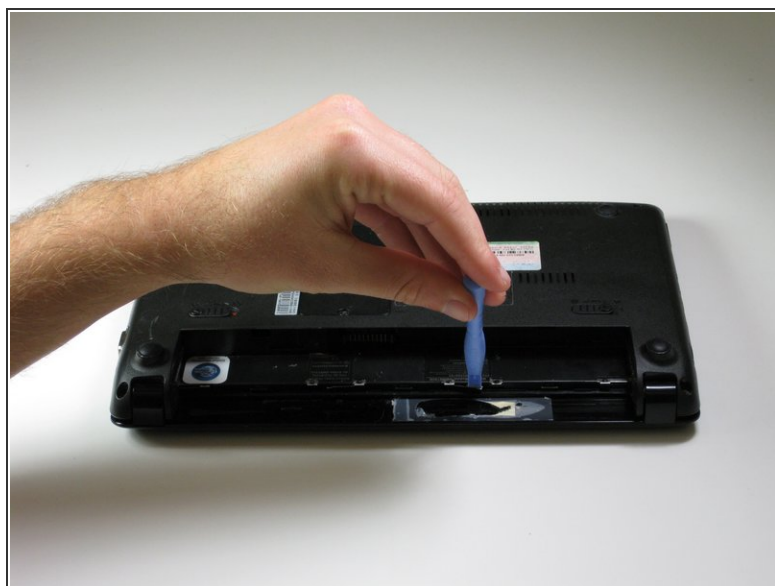
- Lay the laptop upside down.
- Locate the two battery lock tabs.

Step 2



- Slide the tabs outward to unlock the battery.
 - ⓘ The left tab will remain unlocked, while the right tab must be held.
- Holding the right tab open, slide the battery out of the laptop.

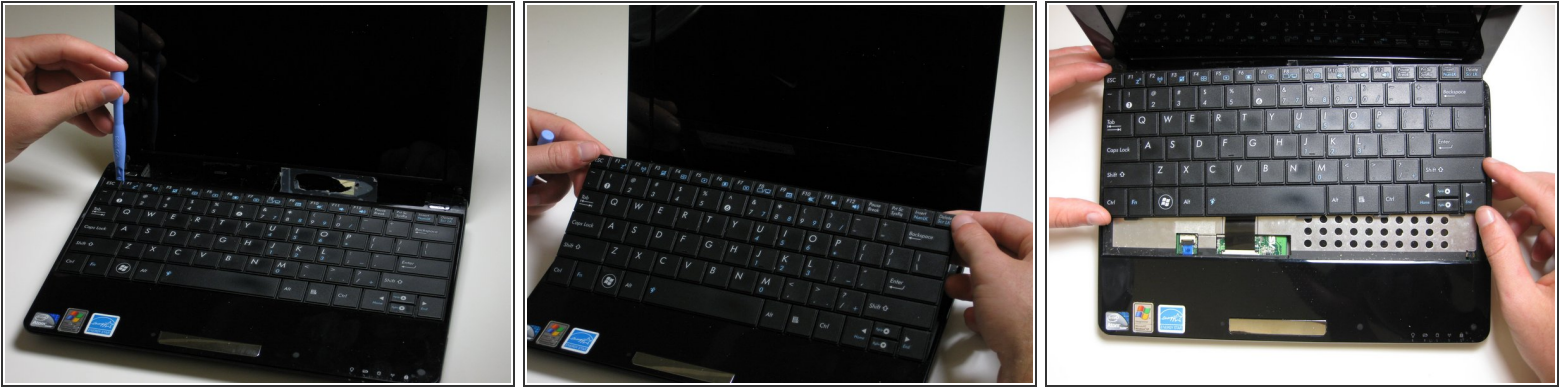
Step 3 — Keyboard



- Use a plastic opening tool to pull up the four metal latches in the battery cavity that is located on the bottom of the laptop.

⚠ Do not apply too much pressure. The latches can not be removed and will bend if forced.

Step 4



- Flip the laptop over, and open the display.
- Use a plastic opening tool to lift the edge of the keyboard that is nearest to the screen.
- Gently lift the keyboard and slide it toward the screen.

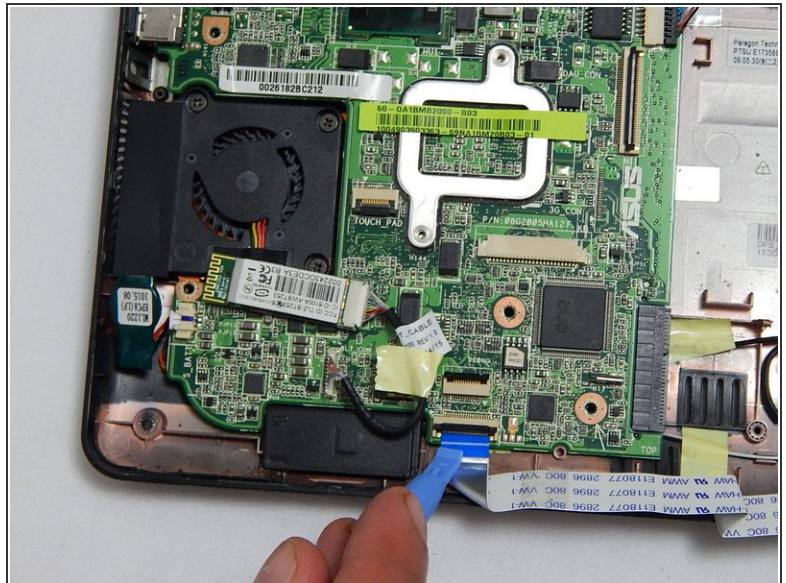
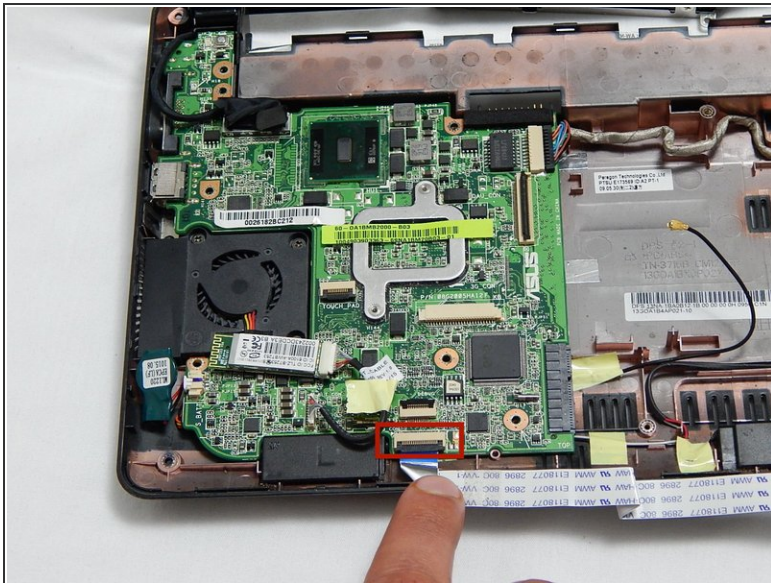
⚠ Do not remove the keyboard completely. This can damage the ribbon cable connecting the underside of the keyboard to the laptop.

Step 5



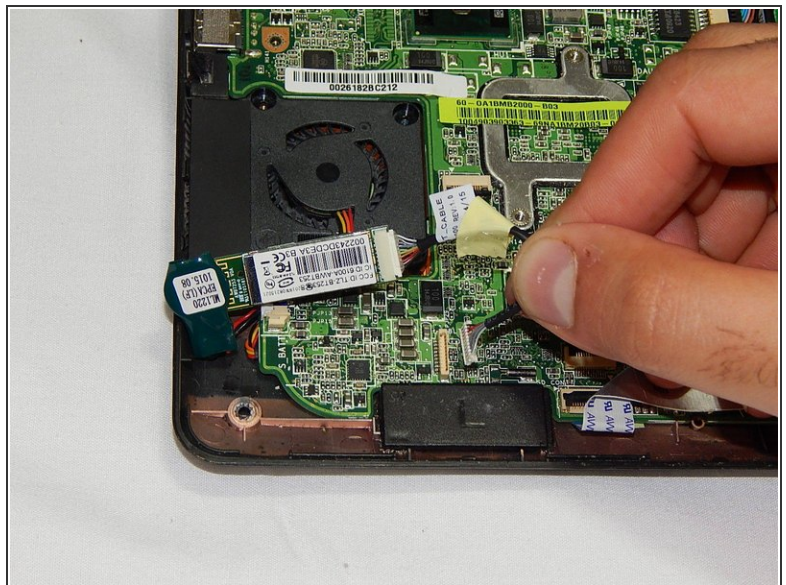
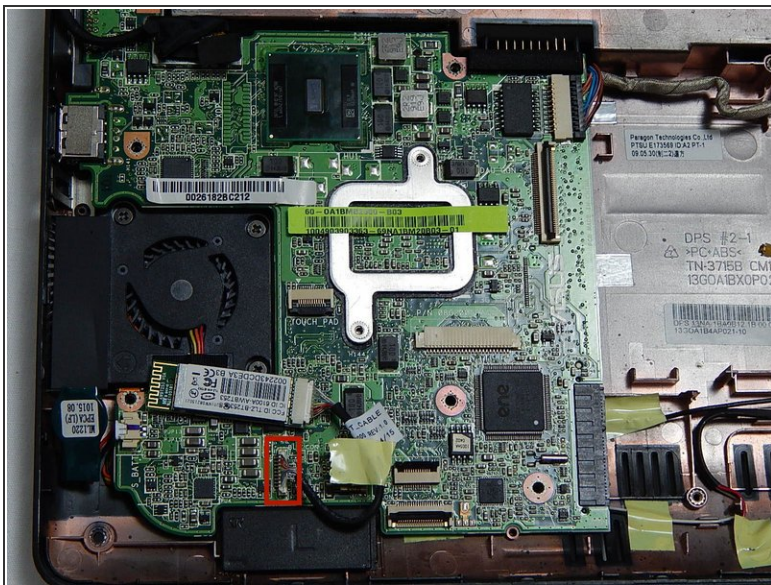
- Use a spudger tool to release the tabs on the ribbon cable ZIF connector that is attached to the underside of the keyboard.
- ⓘ Depending on the model, the tabs on this ZIF connector will either flip up toward the display or push out toward the display.
- Once the ZIF connector tabs have been released, remove the keyboard.

Step 6 — Fan



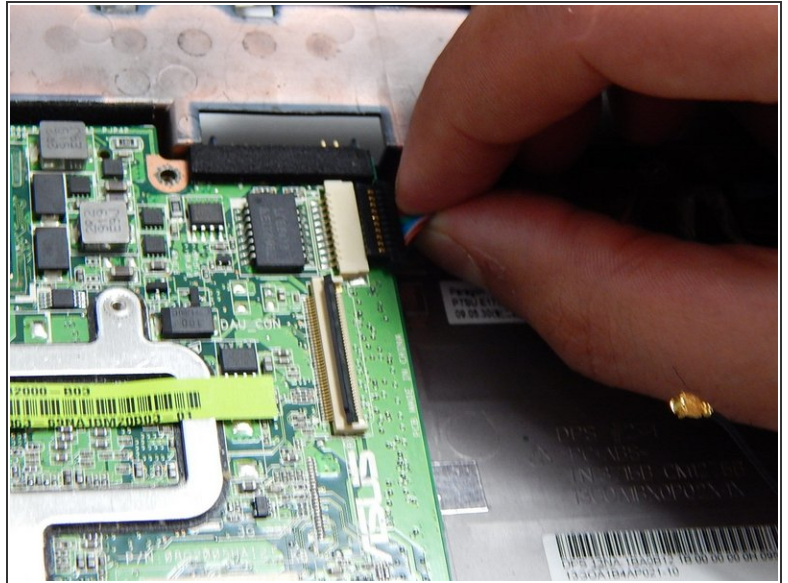
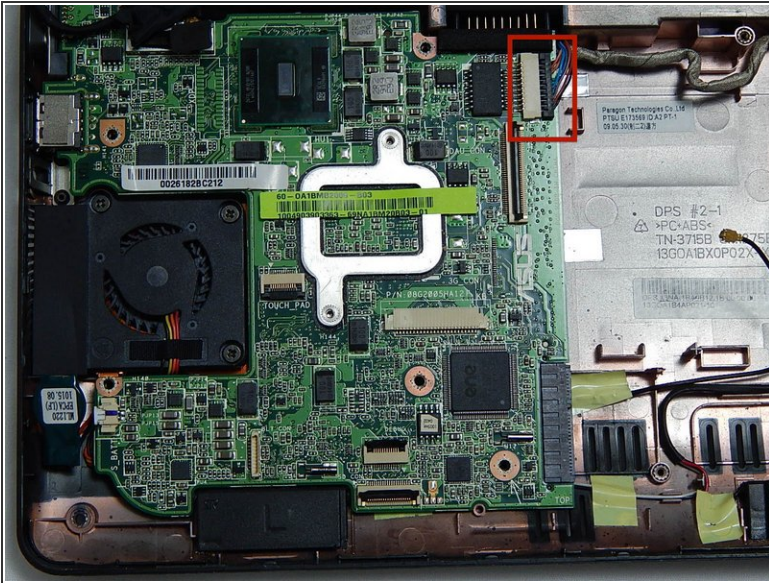
- Detach the ribbon cable that connects the SD card module and the motherboard by lifting the black clips using the plastic opening tool.

Step 7



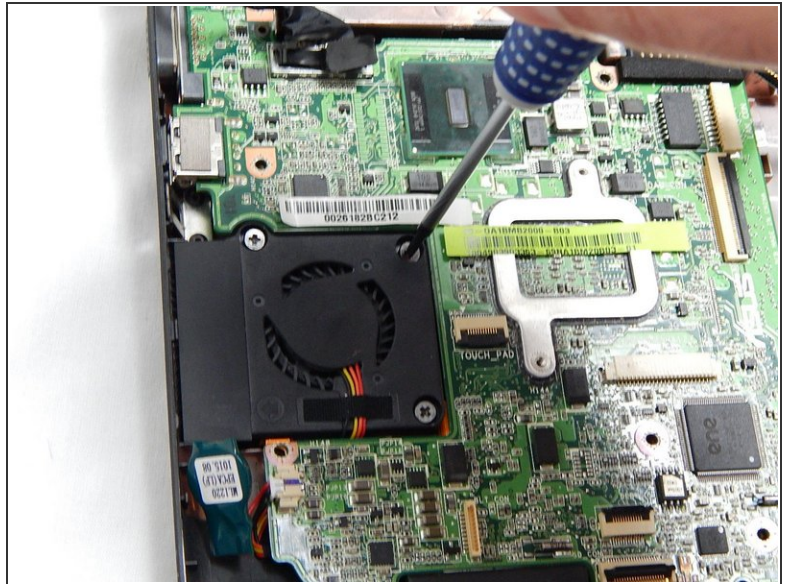
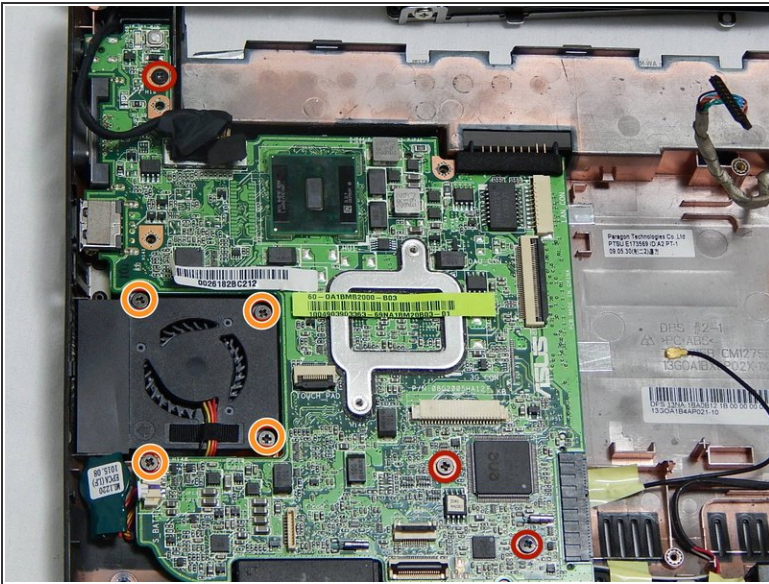
- Detach the Bluetooth wire located below the fan by gently pulling it upward.

Step 8



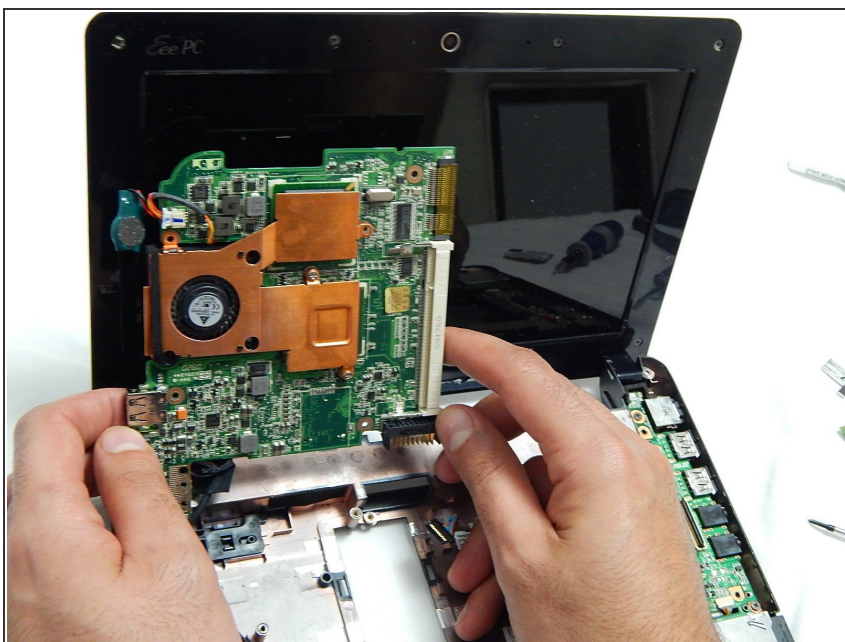
- Detach the black structure connected to the input cables in the top right center of the motherboard by pulling them to the right, away from the fan.

Step 9



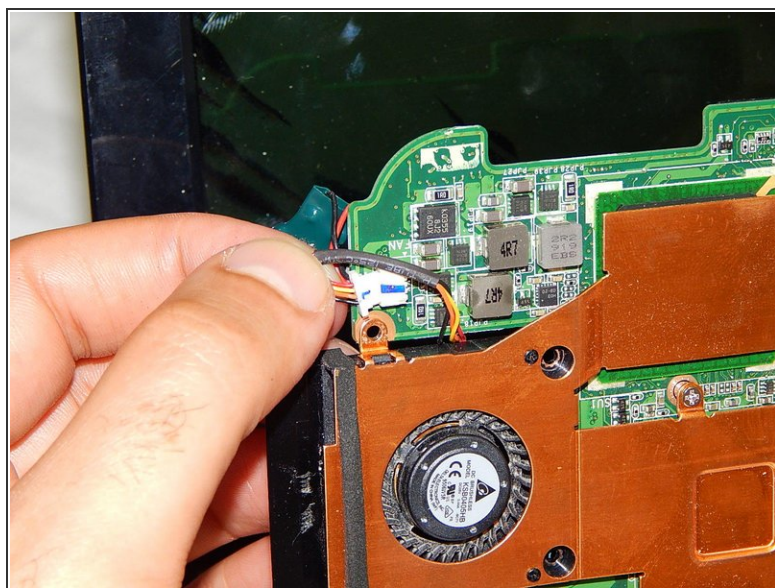
- Remove the three 5.5 mm screws holding the motherboard to the motherboard plastic frame.
- Remove the four 5.5 mm screws surrounding the fan.

Step 10



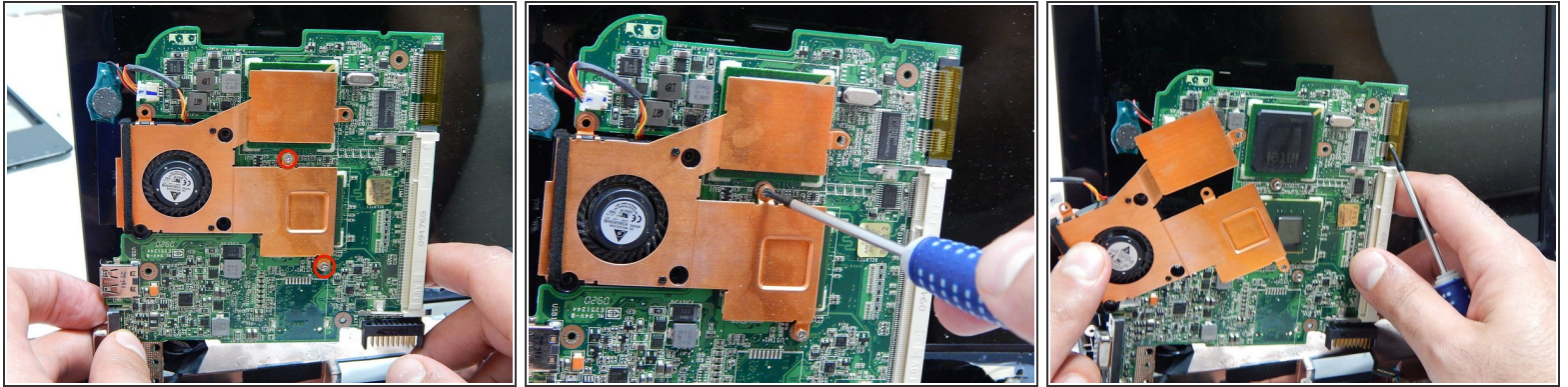
⚠ Gently lift the motherboard and hold it so that the bottom of the board is exposed.

Step 11



- Disconnect the cable attaching the motherboard to the fan.

Step 12



- Remove two 5.5 mm screws holding the fan and the brass frame to the motherboard.

To reassemble your device, follow these instructions in reverse order.