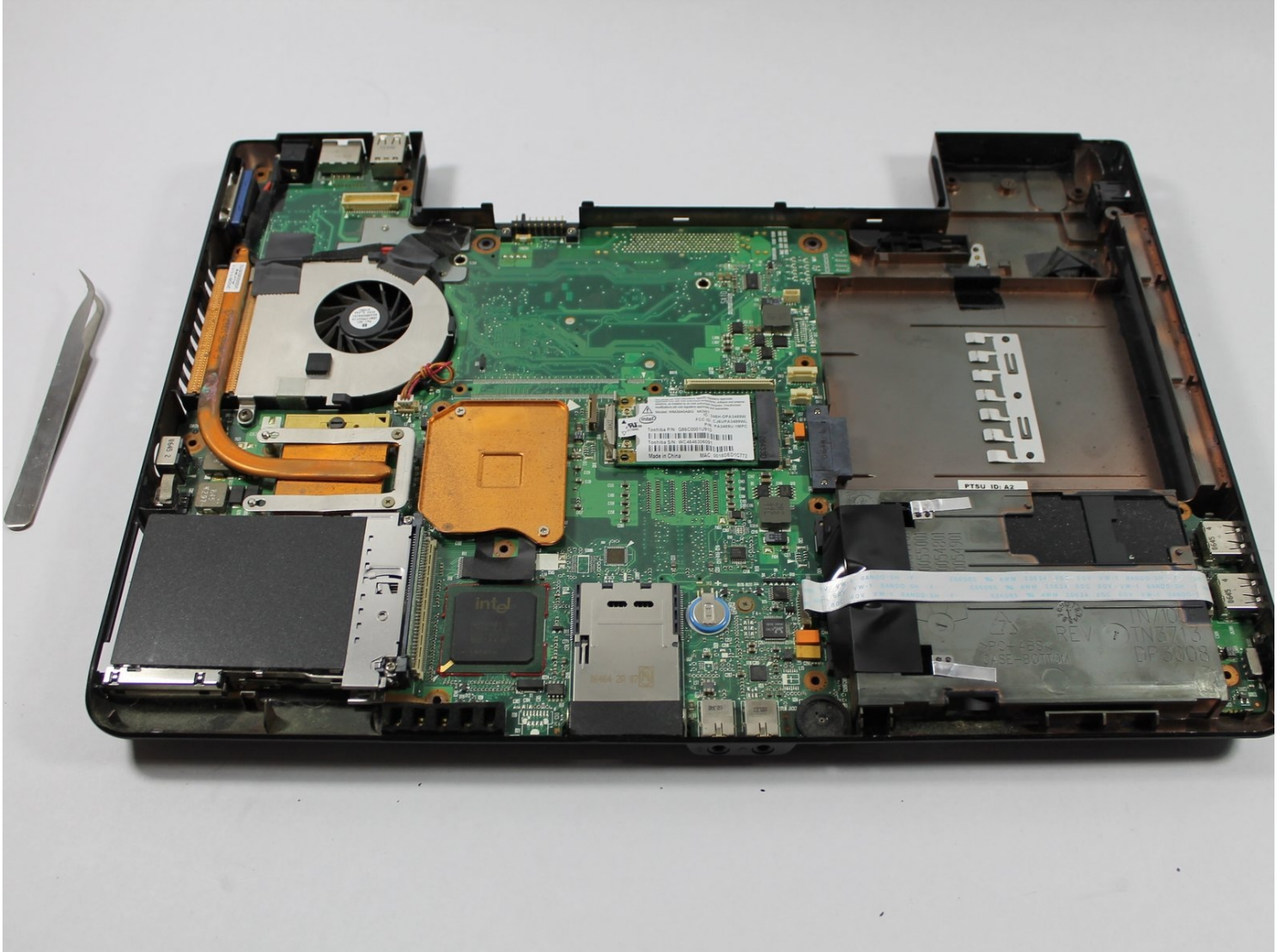




# Toshiba Satellite A105-S4284 Motherboard Replacement

The motherboard is an essential part that...

Written By: Kathy



# INTRODUCTION

The motherboard is an essential part that contains the CPU and runs your computer and its systems, if it's damaged then most likely it'll have to be replaced. This guide will show you how to get to the motherboard and replace it.

---

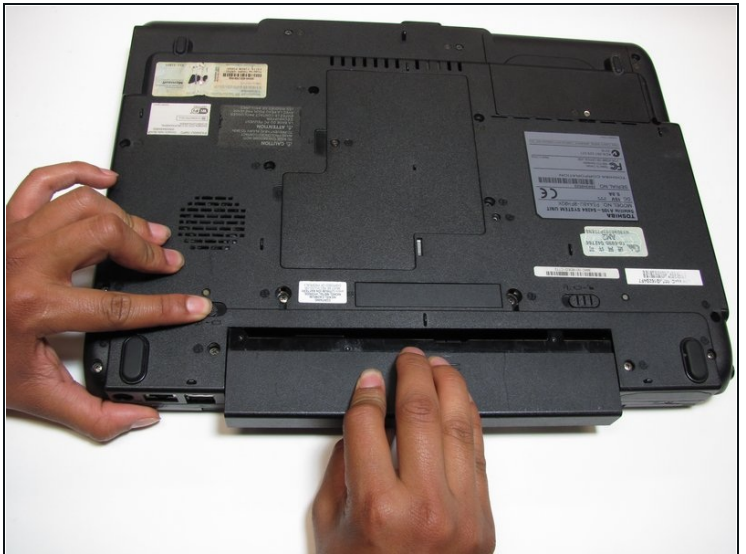
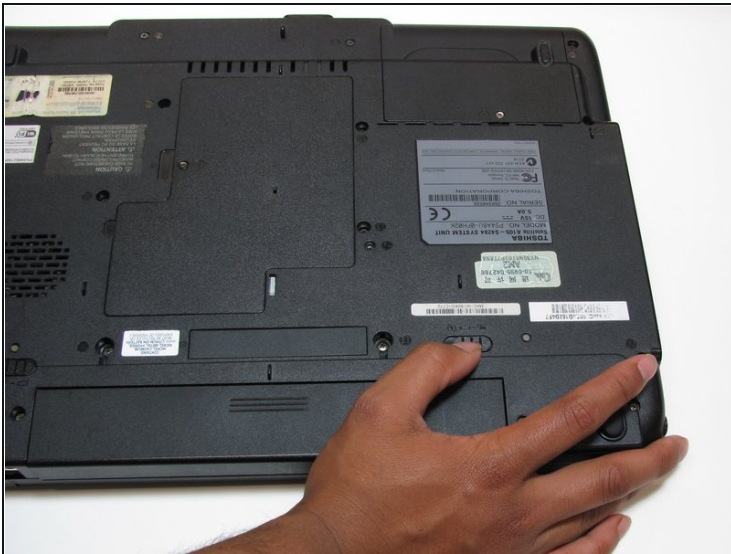
## TOOLS:

[iFixit Opening Tool](#) (1)

[64 Bit Driver Kit](#) (1)

---

## Step 1 — Battery



 Make sure your computer is turned off and the computer is not plugged in.

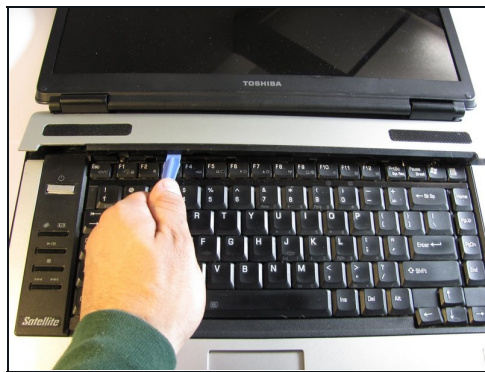
- Turn your laptop upside down, and slide the right release tab outward.
- Using your left hand, hold the left release tab towards the left side and then pull the battery out.

## Step 2 — Keyboard



- ① Flip the laptop over so it is rightside up, and open the laptop all the way so that the screen is horizontal.

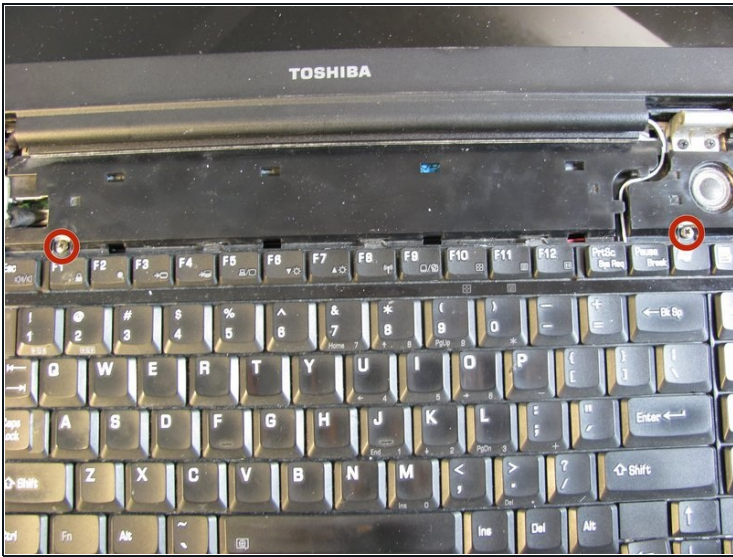
## Step 3



- Using the plastic opening tool, pry off the panel above the keyboard, starting near the right front speaker.
- Use the plastic opening tool to pop off tabs along the length of this panel.
- ① This may feel like you're about to break something, but as long as you work your way down the panel and don't yank it out, the laptop will be fine.

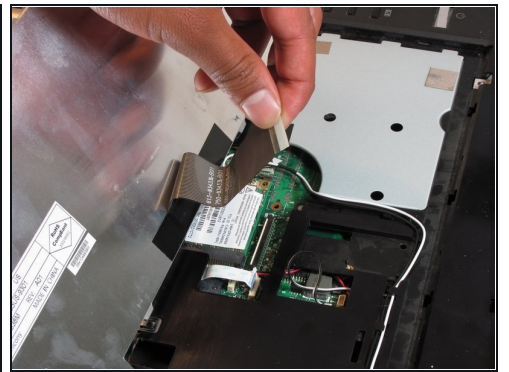
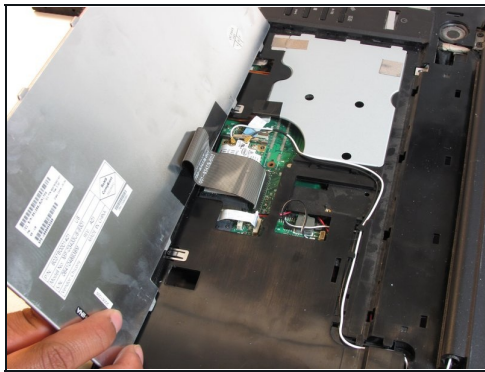


## Step 4



- Unscrew the two 4.5 mm screws holding the keyboard on with the Phillips #1 screwdriver.

## Step 5



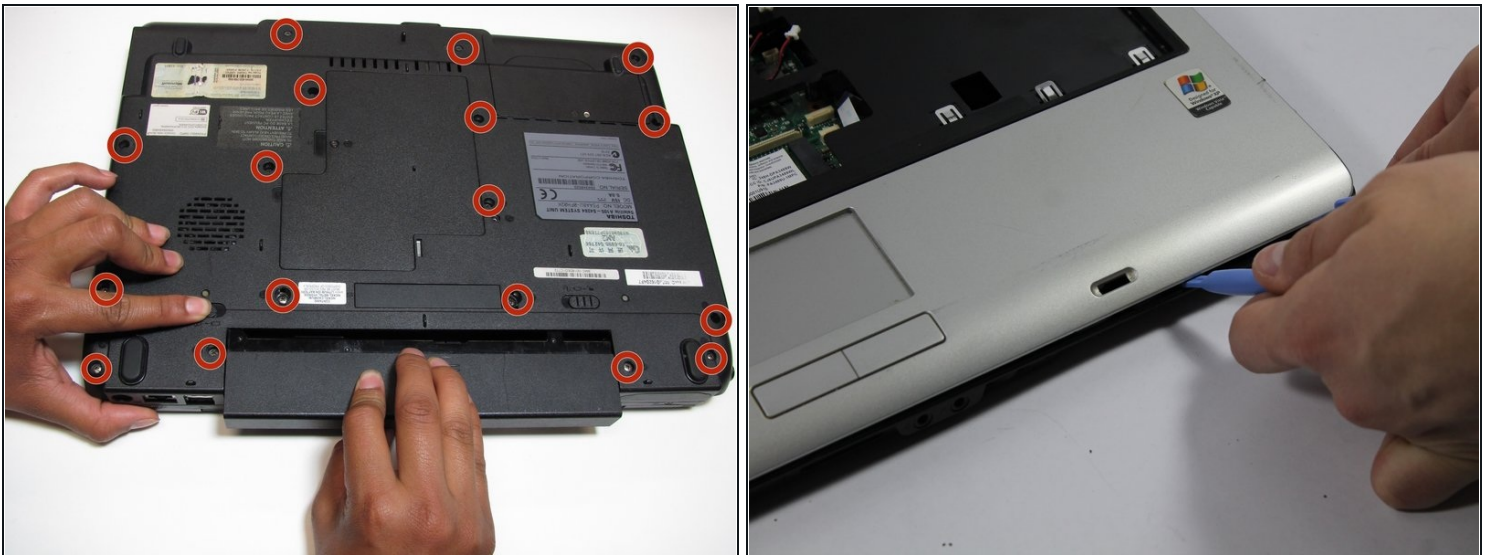
- Lift the keyboard gently from the side closest the screen.
- Pull out the ribbon connecting the keyboard to the laptop.

## Step 6 — Casing



- Disconnect wire attaching LCD to motherboard
- Using the Phillips screwdriver remove the two 4.0mm screws from each hinge above speakers
- Partially close the lid and remove the last two 4.0mm screws from the back of the laptop.

## Step 7

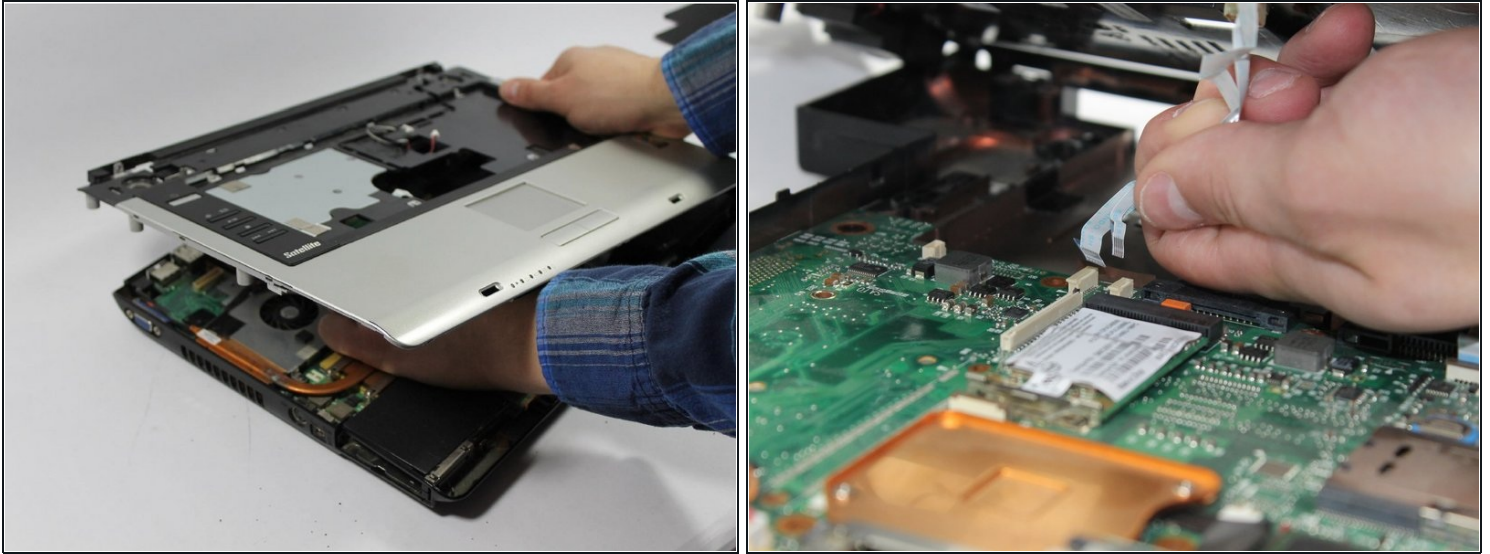


- Remove the seventeen 4.5mm phillips screws on the bottom of the laptop.
- Using the pry tool separate the two halves of the laptop base.

⚠ Use caution when separating the laptop halves as they are still connected by two ribbon cables.

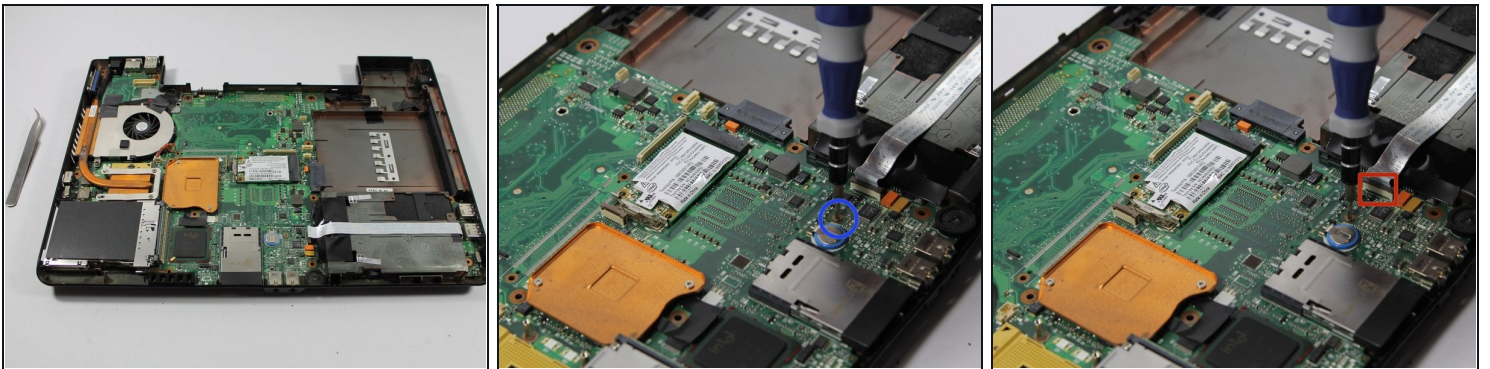


## Step 8



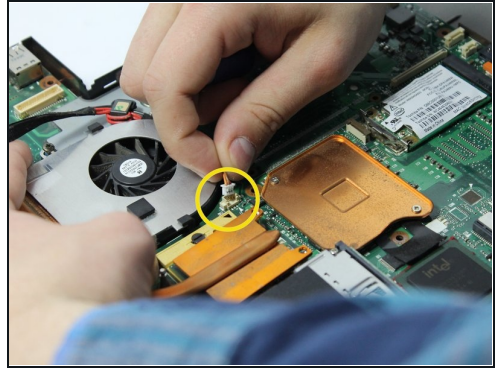
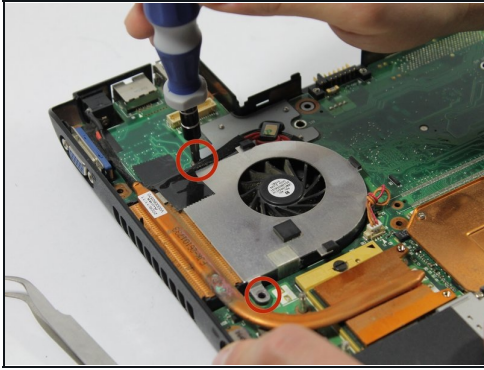
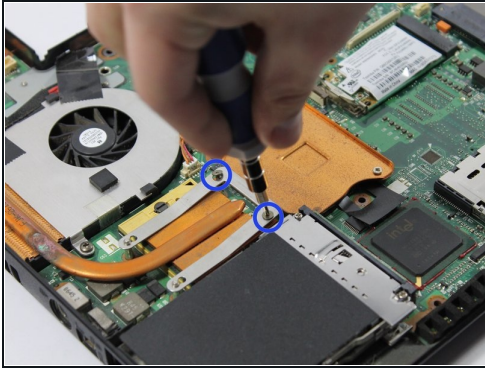
- Lift the top half of the case enough to get your hand beneath it, and then remove the two ribbon cables that connect it to the motherboard.

## Step 9 — Motherboard



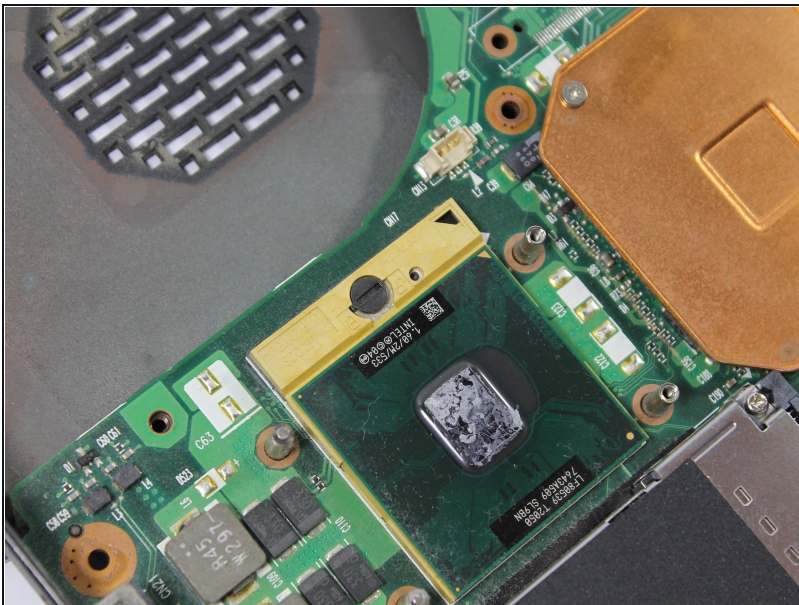
- Remove the upper half of laptop and place bottom half in the center of your workspace.
- Remove the one 2.00mm phillips screw.
- Remove the ribbon cable connecting the USB ports to the motherboard.

## Step 10



- Remove the two 2.5mm phillips screws holding the spring retainer for the heat sink.
- Remove the two 4.0mm phillips screws holding the fan in place.
- Remove the fan power connector.

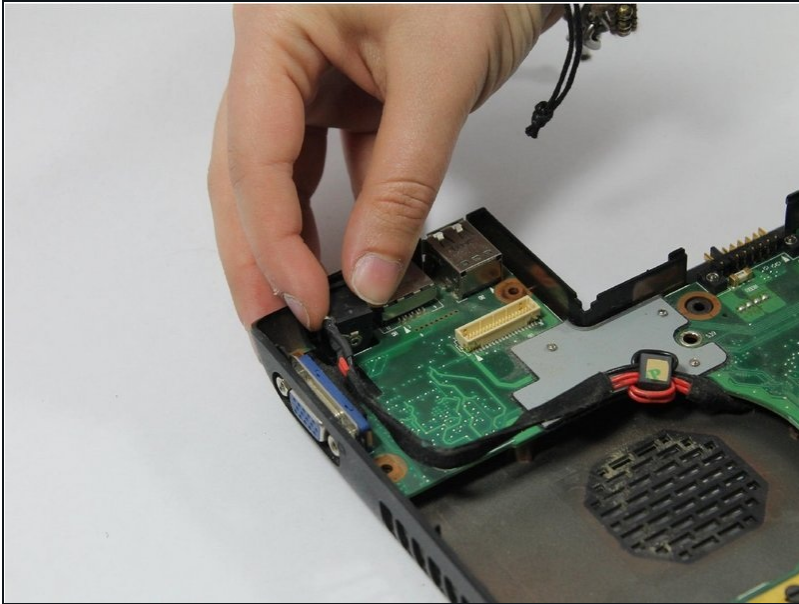
## Step 11



- Lift fan and heat sink out of case.

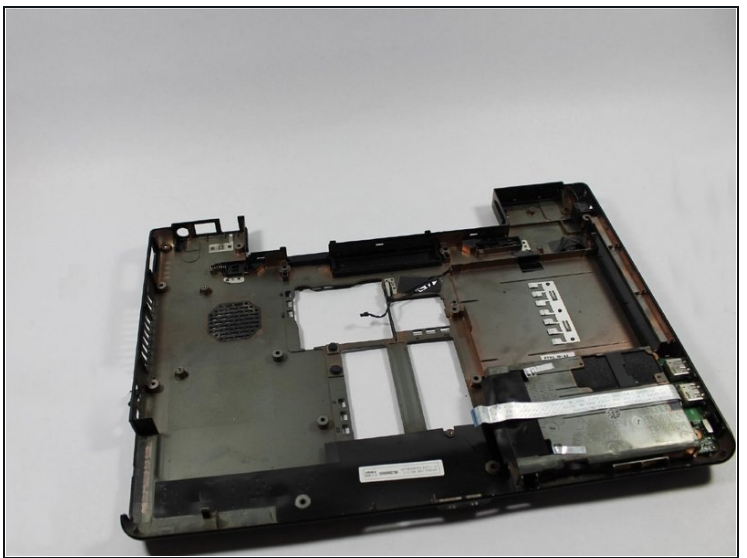


## Step 12



- Lift the power jack straight up and out of the slots that hold it in.

## Step 13



- Lift the motherboard out of the bottom case.

To reassemble your device, follow these instructions in reverse order.