



Samsung Brightside Speaker Module Replacement

Relatively straight forward task, no surprises and fairly simple.

Written By: oldturkey03



INTRODUCTION

I noticed that there was not to much information about working on this phone. I received one in a non-working condition and figured it would be a good chance for some guides. The phone is easy to work on and no hidden screws or clips, no excessive glue. A straight forward no nonsense phone.



TOOLS:

- [Phillips #000 Screwdriver](#) (1)
 - [iFixit Opening Tools](#) (1)
-

Step 1 — Speaker Module



- Here is the Samsung SCH-U380 Brightside
- Turn it over to gain access to the battery.
- Remove the backcover by simply pulling it off the phone from the top down

Step 2



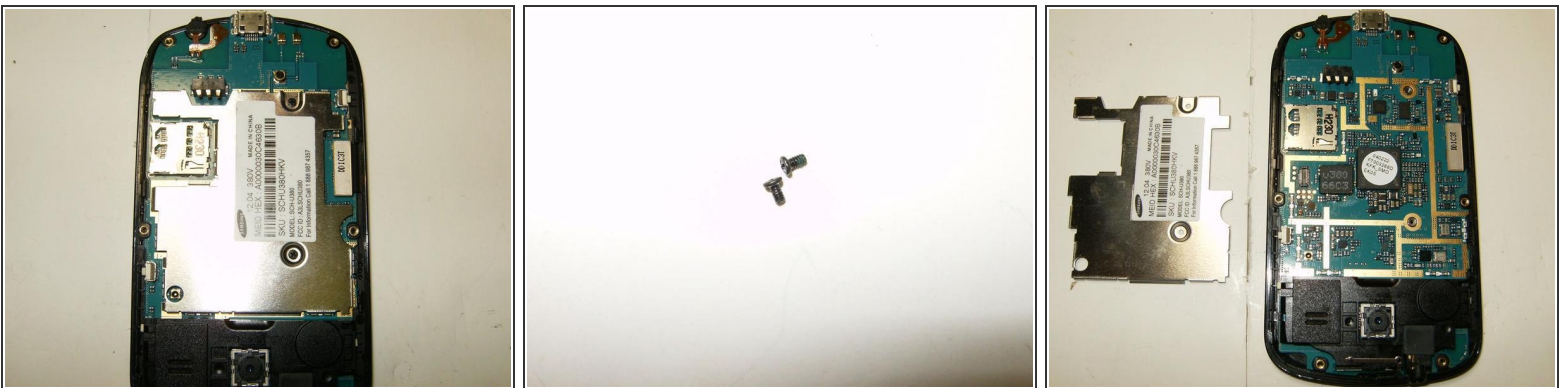
- Remove the battery
- Remove the six Phillips screws from the back frame
- All six screws are identical M1.5X3

Step 3



- Use a plastic opening tool or similar tool to separate the top from the bottom frame. Applying slight pressure in a downwards direction will disengage the plastic clips
- Continue to slide the tool along the slot until you feel the plastic locks disengage
- Once all locks have released, the bottom frame can simply be removed.

Step 4



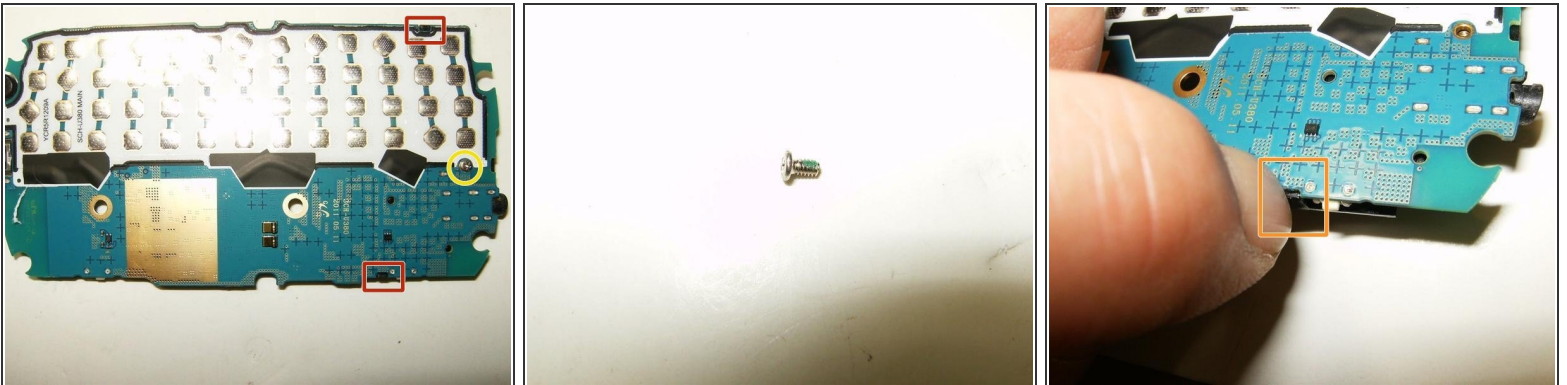
- Remove the two Phillips screws from the EMI shield.
- Both screws are identical M1.5X2
- Remove the EMI shield

Step 5



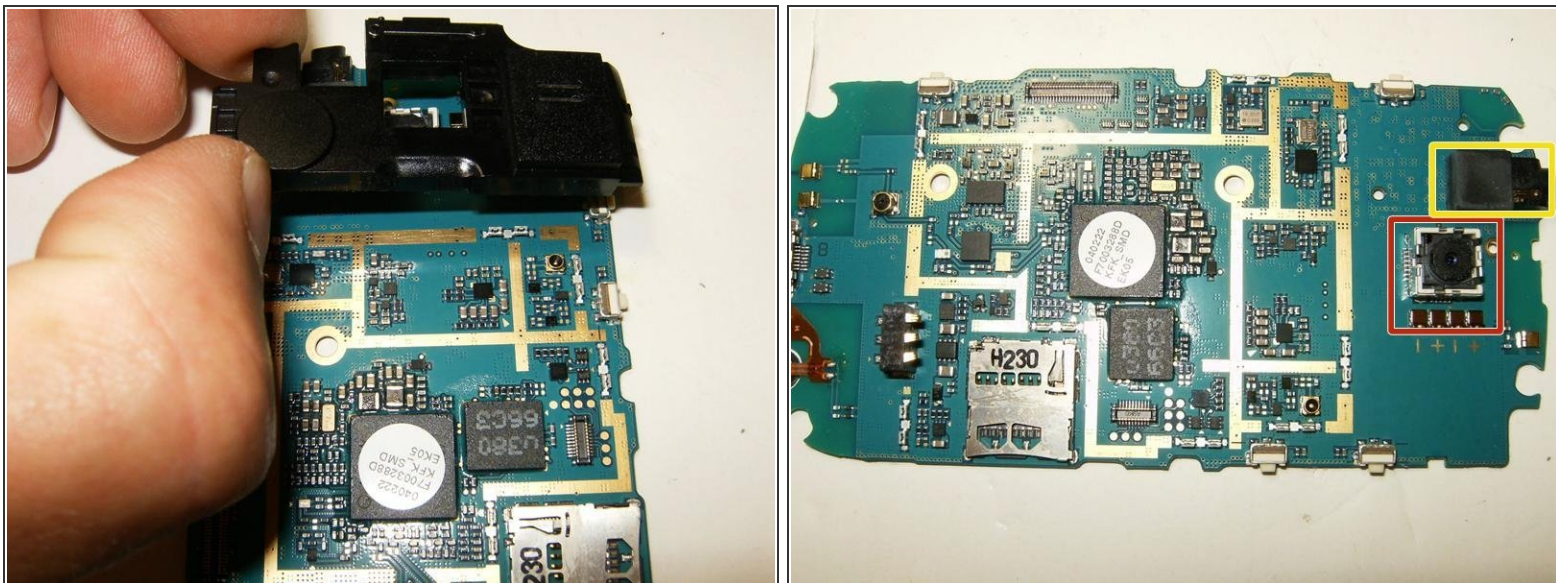
- Detach the LCD connector.
- Remove the logic board
- This is the speaker module. In the center is the camera, but it is not part of the module.

Step 6



- turn the logic board over. The speaker module is held in place
 - by one Phillips screw
 - and two clips
- Remove the Phillips screw.
- It is a M1X2 Phillips screw
- Next disengage one of the clips by simply applying some sideways pressure with your fingernail. This will loosen the module.

Step 7



- Turn the logic board around. With the speaker module loose, simply lift it off the board.
- Speaker module removed.
 - Camera
 - and audio jack
 - are not part of this module and will remain on the board.

To reassemble your device, follow these instructions in reverse order.