



Nokia N900 Camera Replacement

The Nokia N900 was developed and released in...

Written By: Juan Haro



INTRODUCTION

The Nokia N900 was developed and released in 2009. One of the phone's most appreciated features is its camera. If your Nokia N900 is not producing quality photos it may be damaged. These photos will look washed out or blurry. The bad quality could result from scratches on the camera lens or internal damage. Use this guide to remove and add a new camera to the phone.

TOOLS:

[Pro Tech Toolkit](#) (1)

[Spudger](#) (1)

[Phillips #00 Screwdriver](#) (1)

Step 1 — Camera



- Turn the phone around to the back. Sometimes the phone's back camera slider will not work. If this situation comes about replace your back cover.

Step 2



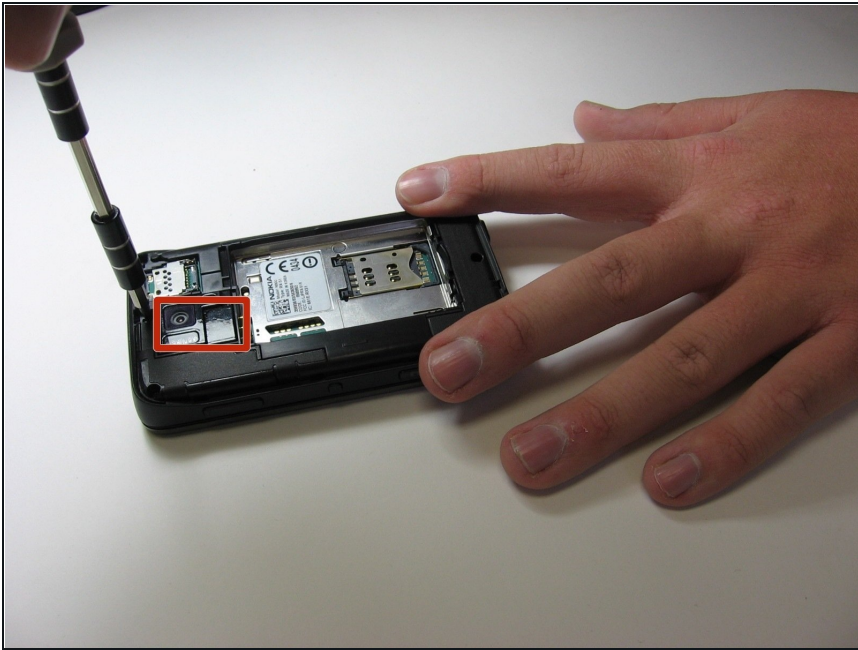
- In the case that you do need a new back cover remove it by locating the slit on the side of the phone allowing you to take off the cover, but if you need to further get to your camera you will need to remove the back cover as well.

Step 3



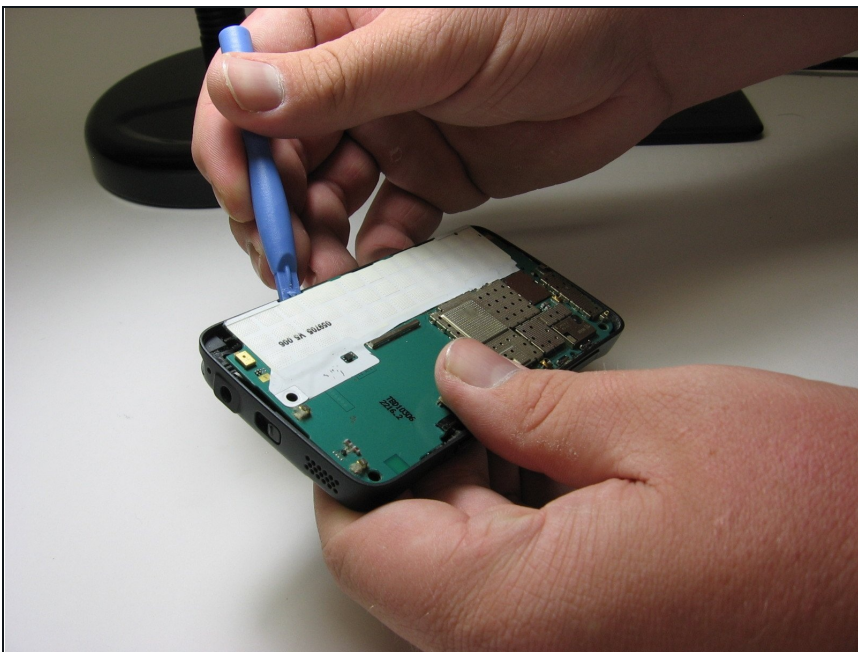
- Remove the battery

Step 4



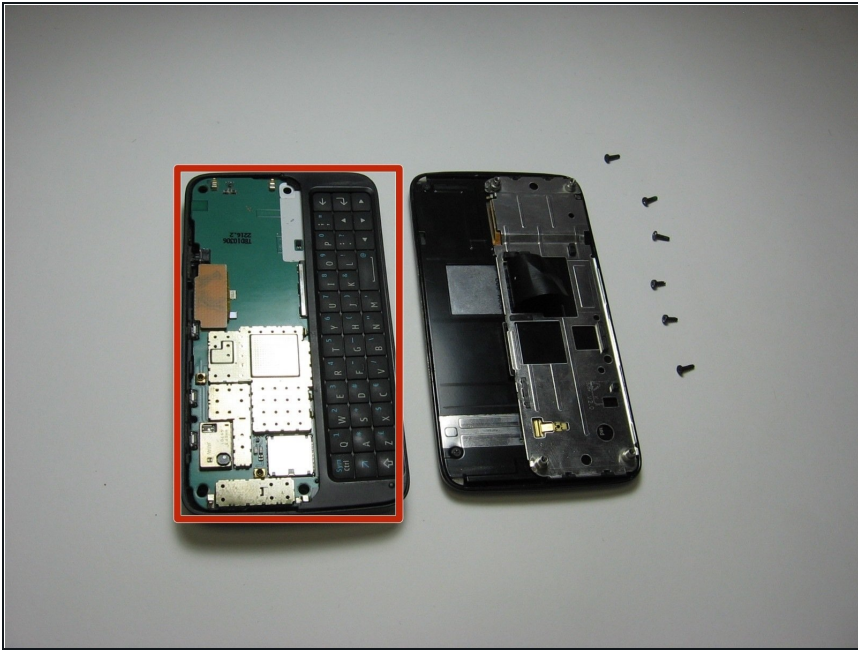
- Now that we have taken everything off the back of the phone we will need to take a screw driver and take the six screw located on the back out of the phone. This will allow you to take apart the phone in two halves.
- Camera

Step 5



- You can use the blue plastic opening tool to remove the motherboard from the back of the phone.
- The camera is located on the back of the motherboard.

Step 6



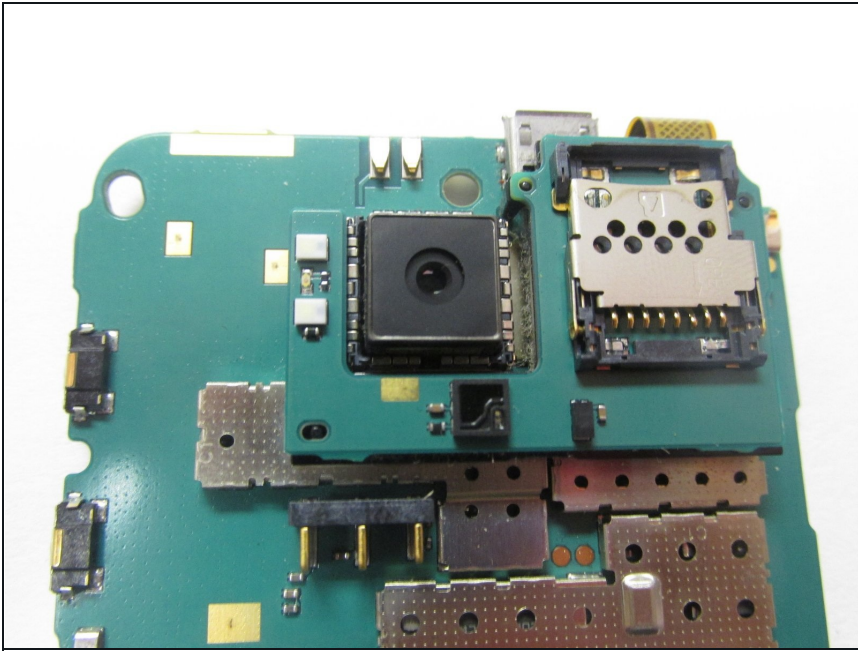
- Your phone should now be able to separate into two pieces. One side being the back of the phone where the camera is located and the other being the side with the touch screen.
- Back side of the phone where the camera is located

Step 7



- Here are the two main pieces of the camera.

Step 8



- The camera can be popped out easily using a blunt knife or credit card. A new camera unit can be put into the same place. In case a Nokia N900 camera unit cannot be found, it is possible to use a Nokia N79 camera without causing damage.

To reassemble your device, follow these instructions in reverse order.