



Samsung Galaxy S Blaze Power Button Replacement

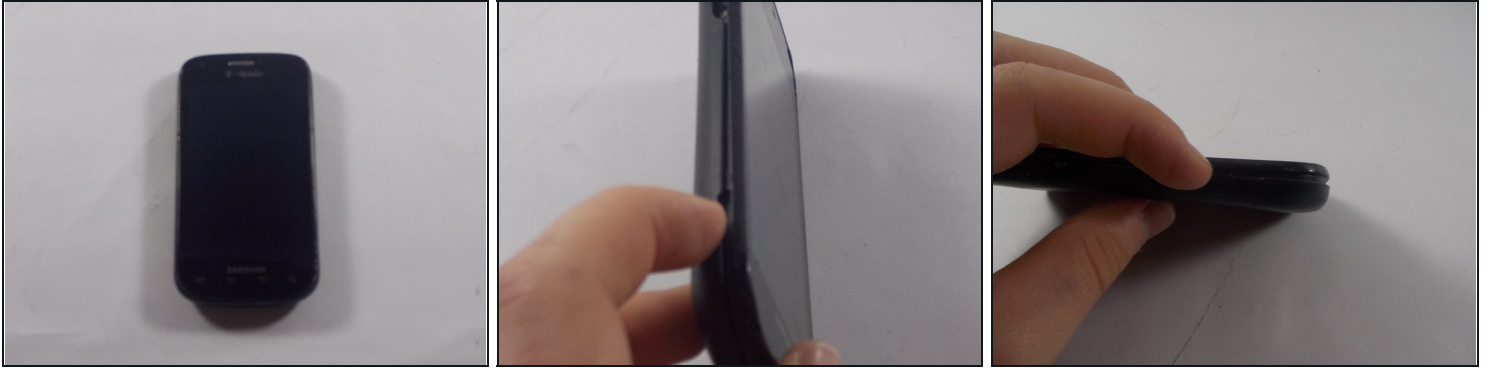
Written By: Dustin



TOOLS:

Phillips #00 Screwdriver (1)

Step 1 — Power Button



- Start by removing the back plastic cover by lifting it up from the notch on the left side of the phone

Step 2



- Remove the battery and use a small Phillips head screwdriver to remove the marked up screws

Step 3



- Use a flat tool to pry the two plastic cases apart
- The latches are very strong, so don't be afraid to use force

Step 4



- Locate the missing button slot
- Place in replacement button, and close the plastic housing around it
- The button should be fully functional now, repeat past steps to reassemble the phone

To reassemble your device, follow these instructions in reverse order.